

NOTES

THE PARAPET IN A CONTINUOUS UNIT SHALL NOT BE CAST UNTIL ALL SLAB CONCRETE IN THE UNIT HAS BEEN CAST AND HAS REACHED A MINIMUM COMPRESSIVE STRENGTH OF 3,000 PSI.

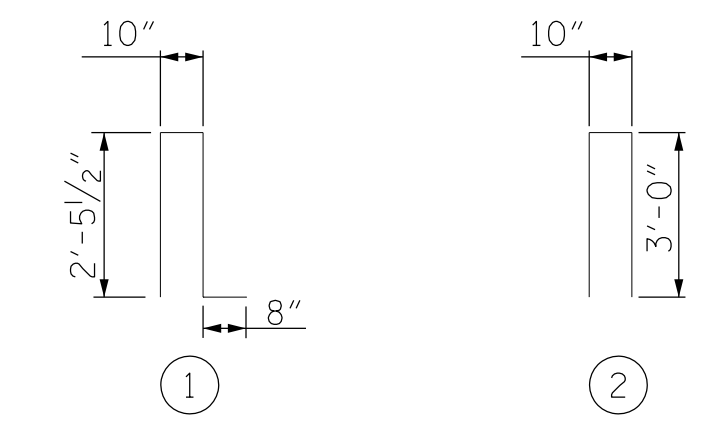
ALL REINFORCING STEEL IN PARAPETS AND END POSTS SHALL BE EPOXY COATED.

FOR DETAILS OF CONCRETE INSERTS IN END POSTS, SEE "RAIL POST SPACINGS AND END OF RAIL DETAILS" SHEET.

FOR DETAILS OF GUARDRAIL ANCHOR ASSEMBLIES, SEE "GUARDRAIL ANCHORAGE DETAILS FOR METAL RAILS" SHEET.

GROOVED CONTRACTION JOINTS, 1/2" IN DEPTH, SHALL BE TOOLED IN ALL EXPOSED FACES OF THE PARAPET AND IN ACCORDANCE WITH ARTICLE 825-10(B) OF THE STANDARD SPECIFICATIONS. THE CONTRACTION JOINT SHALL BE LOCATED AT EACH THIRD POINT BETWEEN PARAPET EXPANSION JOINTS. ONLY ONE CONTRACTION JOINT IS REQUIRED AT MIDPOINT OF PARAPET SEGMENTS LESS THAN 20 FEET IN LENGTH AND NO CONTRACTION JOINTS ARE REQUIRED FOR THOSE SEGMENTS LESS THAN 10 FEET IN LENGTH.

THE #5S1 & #5S2 BARS MAY BE SHIFTED AS NECESSARY IN ORDER TO MAINTAIN 2" MIN. CLEAR TO THE 1/2" EXPANSION JOINT MATERIAL IN THE BARRIER RAIL.



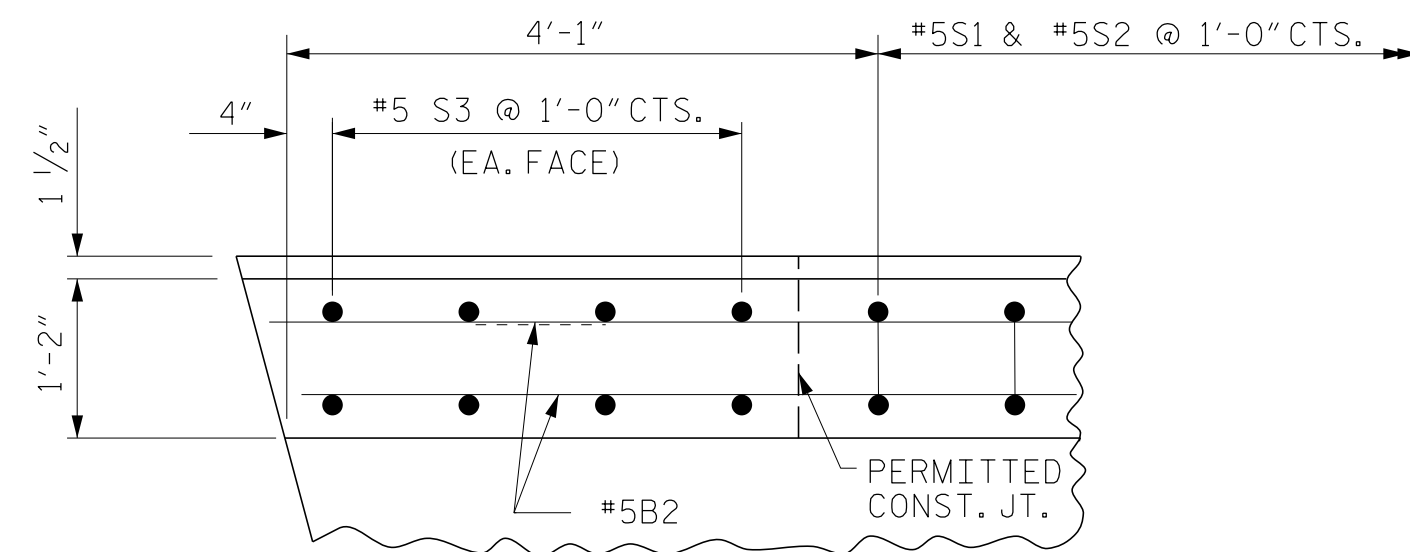
BAR TYPE

BAR DIMENSIONS ARE OUT TO OUT

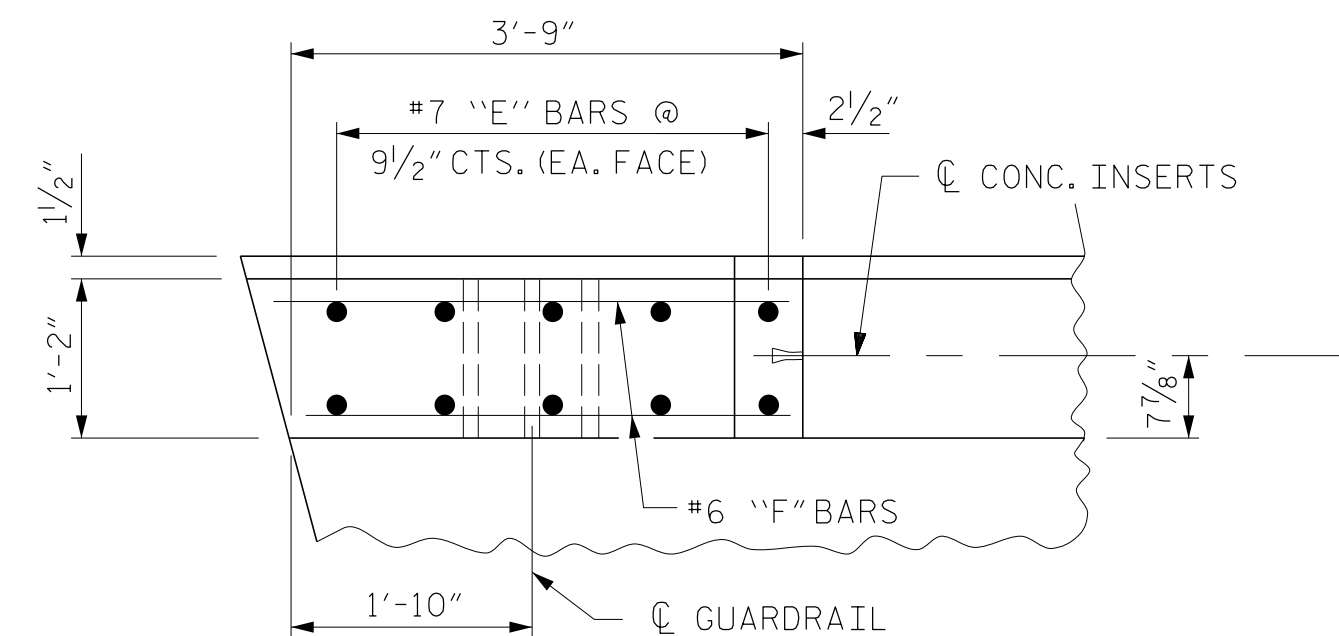
BILL OF MATERIAL FOR PARAPET & END POSTS

BAR	NO.	SIZE	TYPE	LENGTH	WEIGHT
*B1	120	# 5	STR	26'-8"	3338
*B2	80	# 5	STR	13'-0"	1085
*E1	8	# 7	STR	3'-2"	52
*E2	8	# 7	STR	3'-8"	60
*E3	8	# 7	STR	4'-2"	68
*E4	8	# 7	STR	4'-8"	76
*E5	8	# 7	STR	5'-0"	82
*F1	8	# 6	STR	1'-10"	21
*F2	8	# 6	STR	3'-0"	36
*F3	8	# 6	STR	3'-9"	45
*S1	400	# 5	1	6'-5"	2677
*S2	400	# 5	2	6'-10"	2851
*S3	32	# 5	STR	3'-8"	122

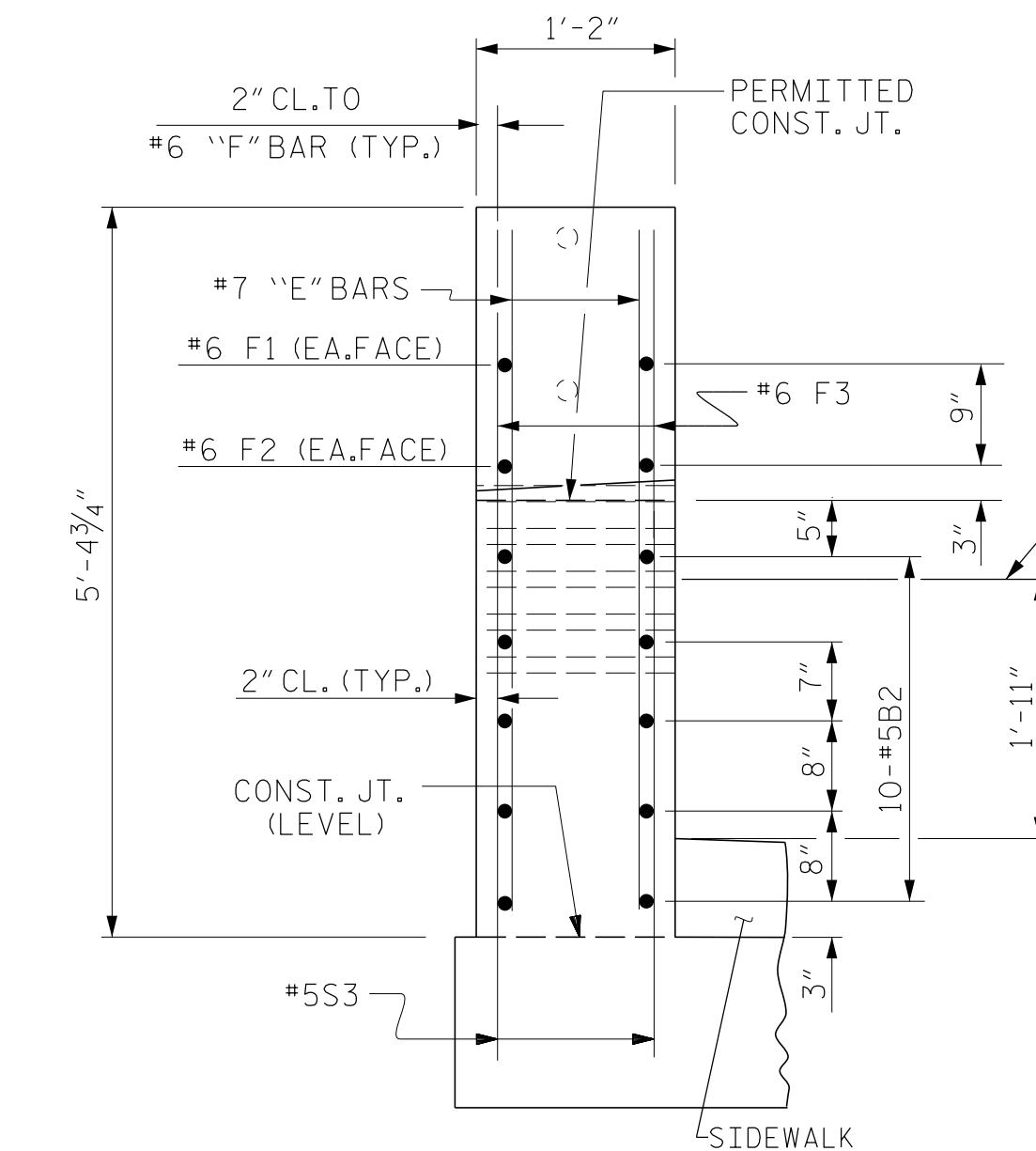
\* EPOXY COATED REINFORCING STEEL 10514 LBS.  
 CLASS AA CONCRETE 58.8 CU.YDS.  
 TOTAL LIN. FT. OF CONCRETE PARAPET 414.65



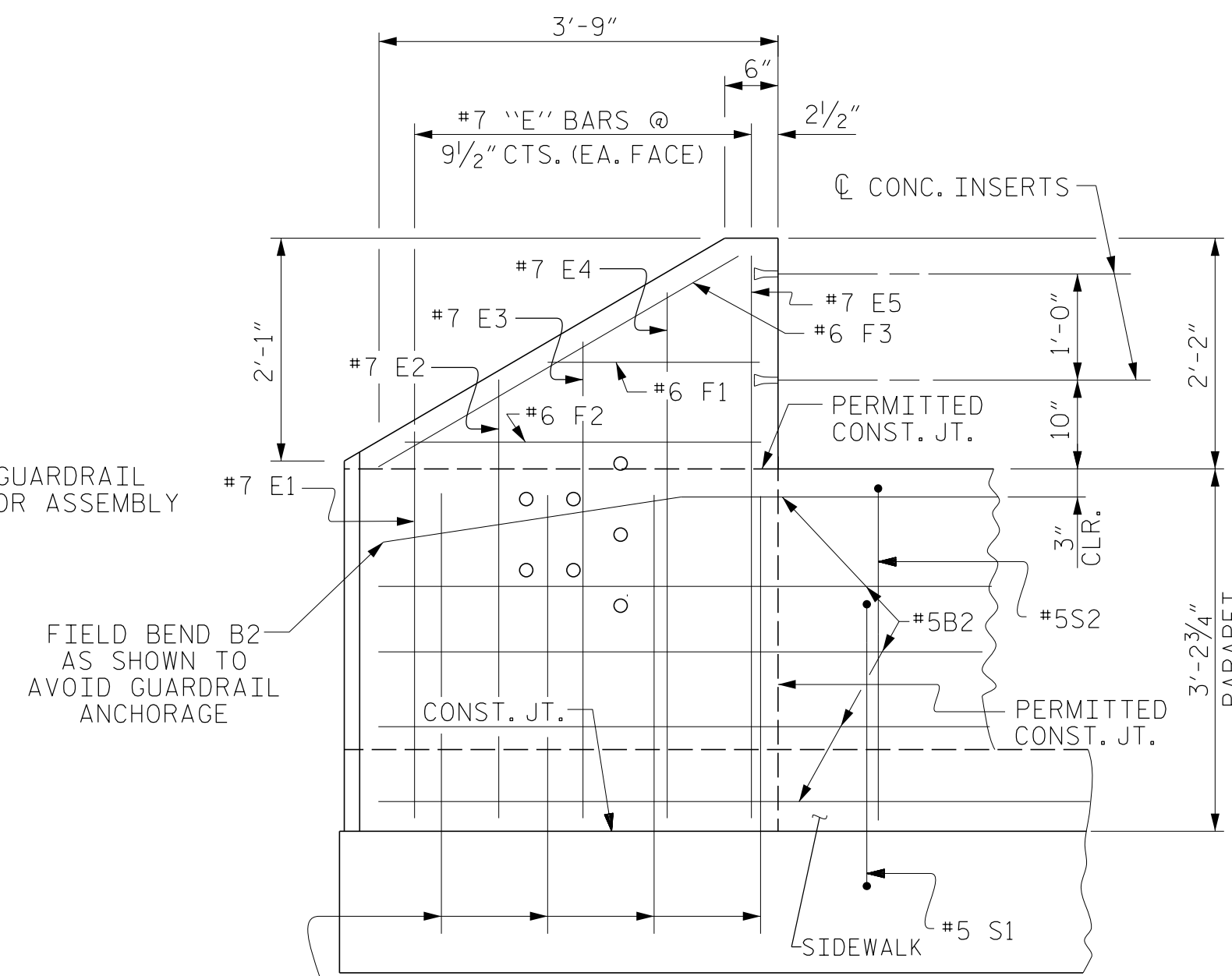
PLAN OF PARAPET



PLAN OF END POST

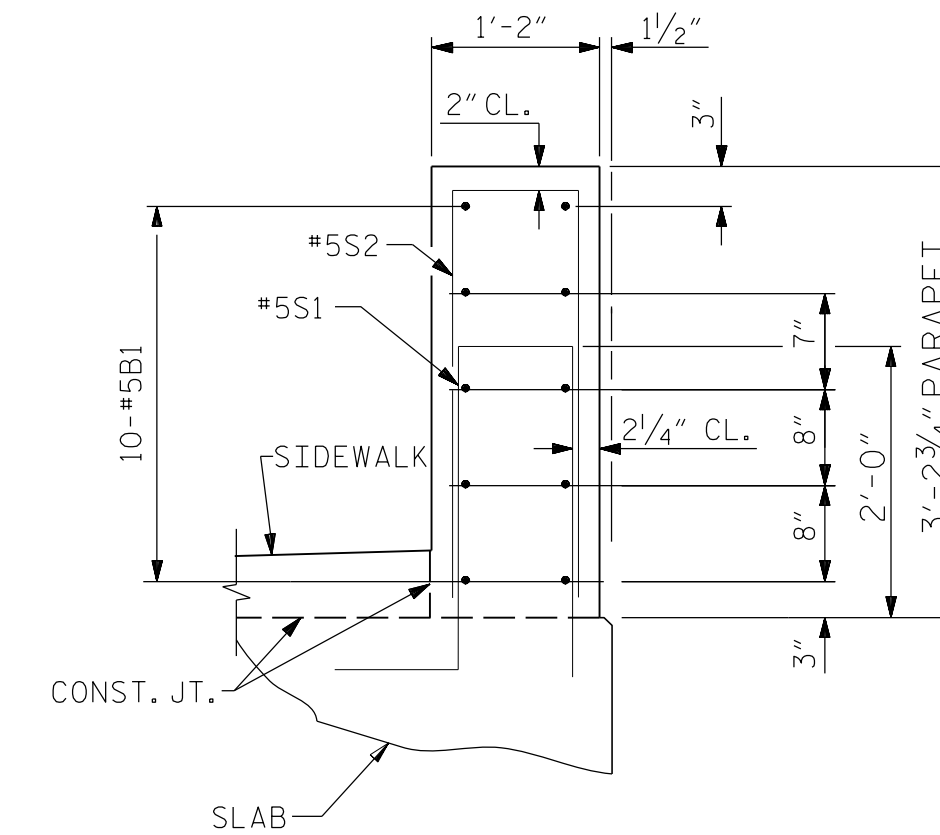


END VIEW



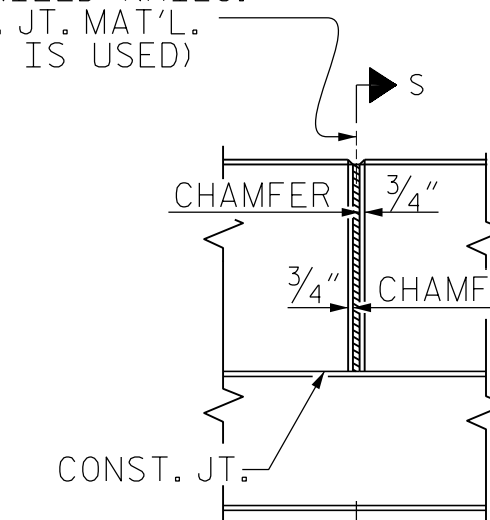
ELEVATION

PARAPET AND END POST FOR TWO BAR RAIL

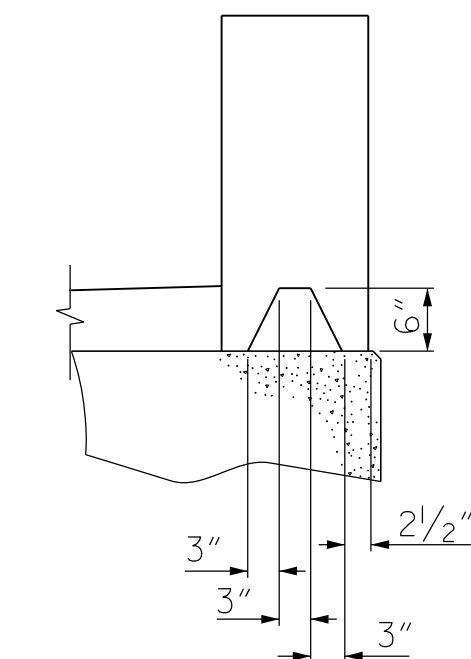


SECTION THOUGH PARAPET

1/2" EXP. JT. MAT'L HELD IN PLACE WITH GALVANIZED NAILS. (NOTE: OMIT EXP. JT. MAT'L. WHEN SLIP FORM IS USED)

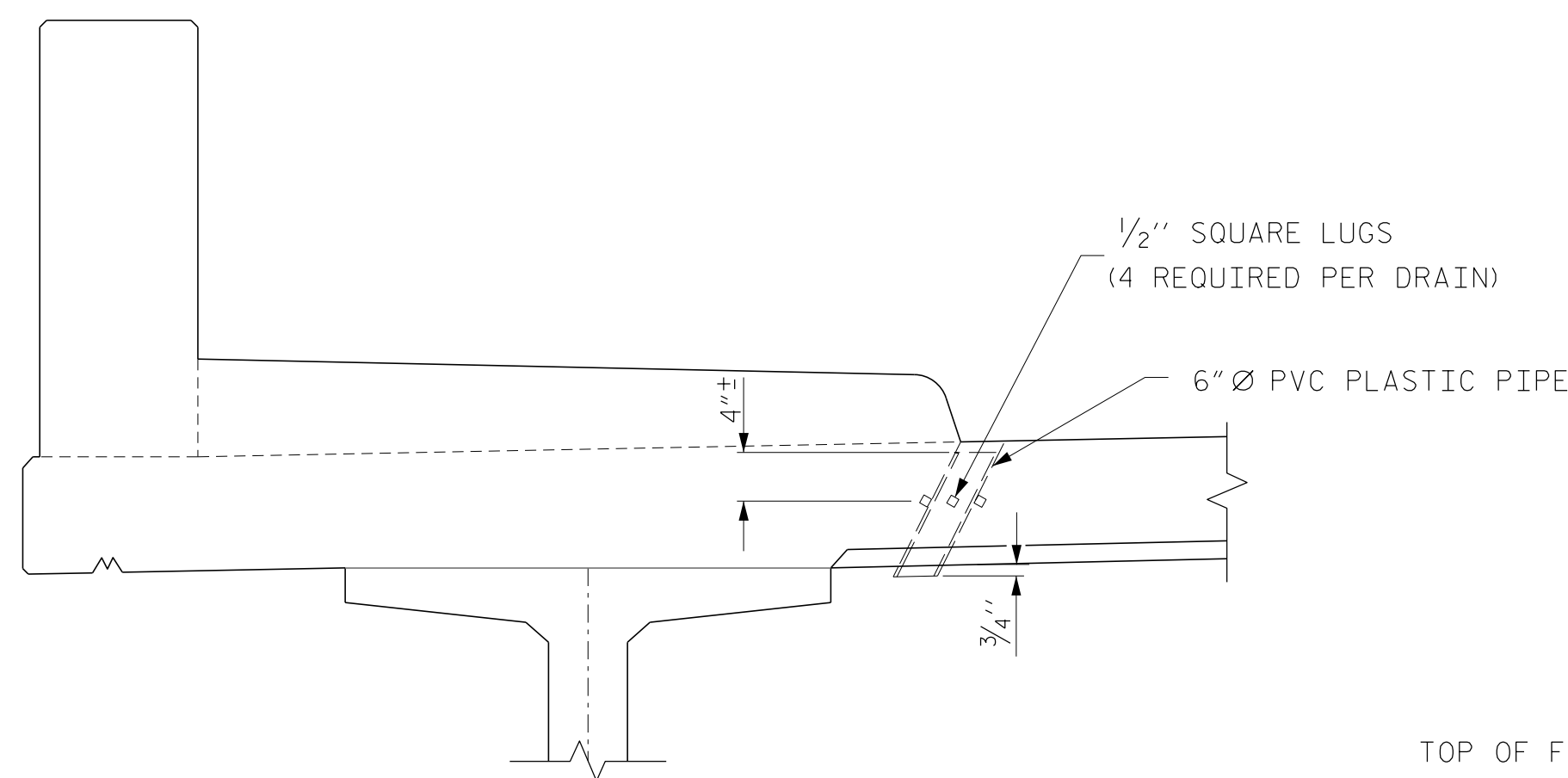


ELEVATION AT EXPANSION JOINTS

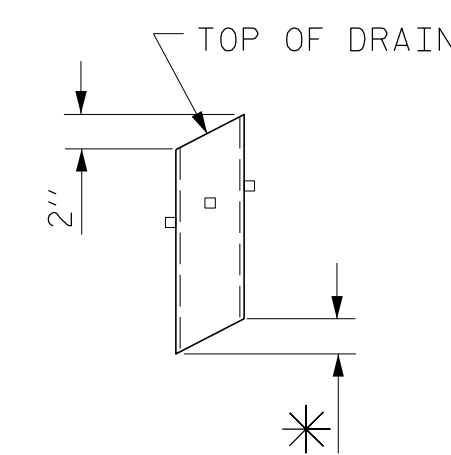


SECTION S-S

AT DAM IN OPEN JOINT (THIS IS TO BE USED ONLY WHEN SLIP FORM IS USED)



ELEVATION



PIPE DETAIL

\* TO BE SET TO MATCH SLOPE OF BOTTOM OF OVERHANG (40 DRAINS REQUIRED)

TOP OF FLOOR DRAINS TO BE SET 3/8" BELOW SURFACE OF SLAB.

4 - 1/2" SQUARE LUGS TO BE GLUED TO THE P.V.C. PLASTIC PIPE AT EQUAL SPACES AROUND THE PIPE DRAIN APPROXIMATELY 4" FROM THE TOP OF THE PIPE.

THE 6" Ø PVC PLASTIC PIPE AND FITTINGS SHALL BE SCHEDULE 40 AND CONFORM TO ASTM D1785.

DRAIN DETAILS

PROJECT NO. R-2707C  
 CLEVELAND COUNTY  
 STATION: 24+07.99 -Y9- POT

SHEET 5 OF 6



DocuSigned by: Jeff Loftus 2/2/2017

Firm License No. C-1051  
 421 Fayetteville St,  
 Suite 400  
 Raleigh, NC 27601  
 T 919.380.8750  
 www.stewartinc.com



STATE OF NORTH CAROLINA  
 DEPARTMENT OF TRANSPORTATION  
 RALEIGH

PARAPET AND END POST  
 DETAILS FOR TWO BAR  
 METAL RAIL

REVISIONS						SHEET NO.
NO.	BY:	DATE:	NO.	BY:	DATE:	S6-23
1			3			TOTAL SHEETS
2			4			37

STR. #6

DRAWN BY: J. LOFTUS DATE: 07-16  
 CHECKED BY: H. ASSFOURA DATE: 11-16  
 DESIGN ENGINEER OF RECORD: J. LOFTUS DATE: 07-16

2/2/2017  
 \\406\_045\_R2707C\_SMU-RAIL5-S6-23.dgn  
 USER:jeffloftus

R 2707C-6