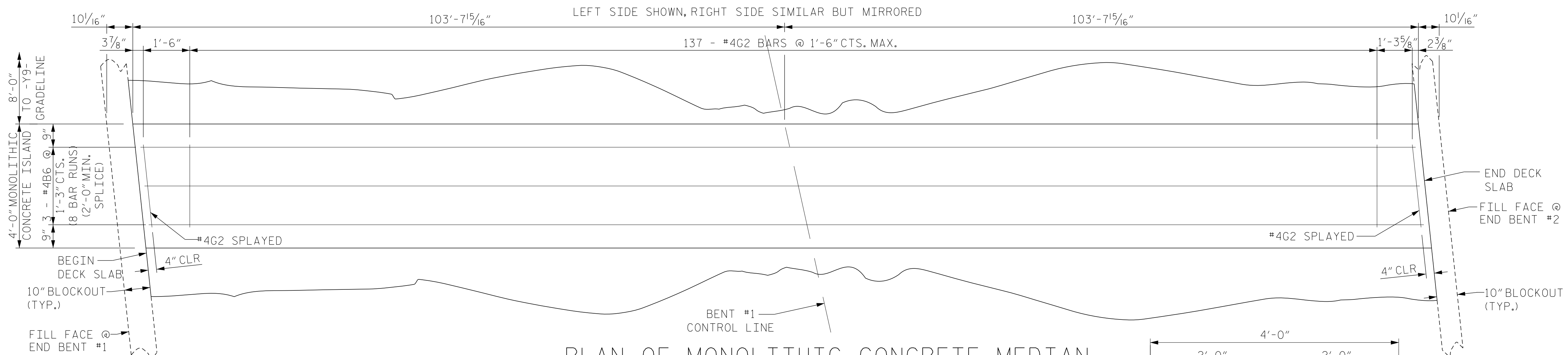


PLAN OF SIDEWALK



PLAN OF MONOLITHIC CONCRETE MEDIAN

NOTES

THE #4U3 BARS MAY BE PUSHED INTO GREEN CONCRETE AFTER SPAN HAS BEEN SCREEDED OFF.

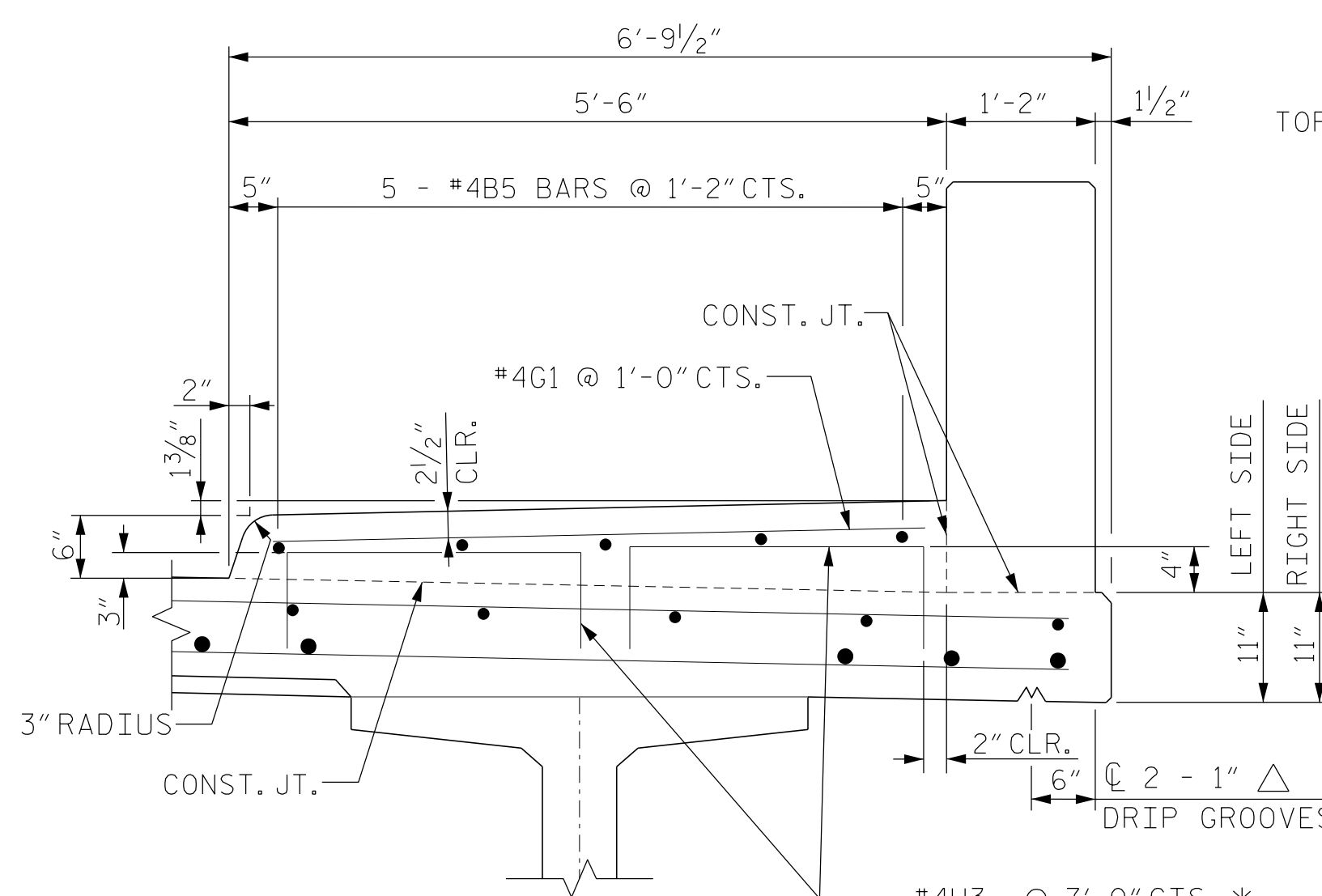
THE SIDEWALK IN A CONTINUOUS UNIT SHALL NOT BE CAST UNTIL ALL SLAB CONCRETE IN THAT UNIT HAS BEEN CAST AND HAS REACHED A MINIMUM COMPRESSIVE STRENGTH OF 3,000 PSI.

ALL REINFORCING STEEL IN THE SIDEWALK & MONOLITHIC CONCRETE ISLAND SHALL BE EPOXY COATED.

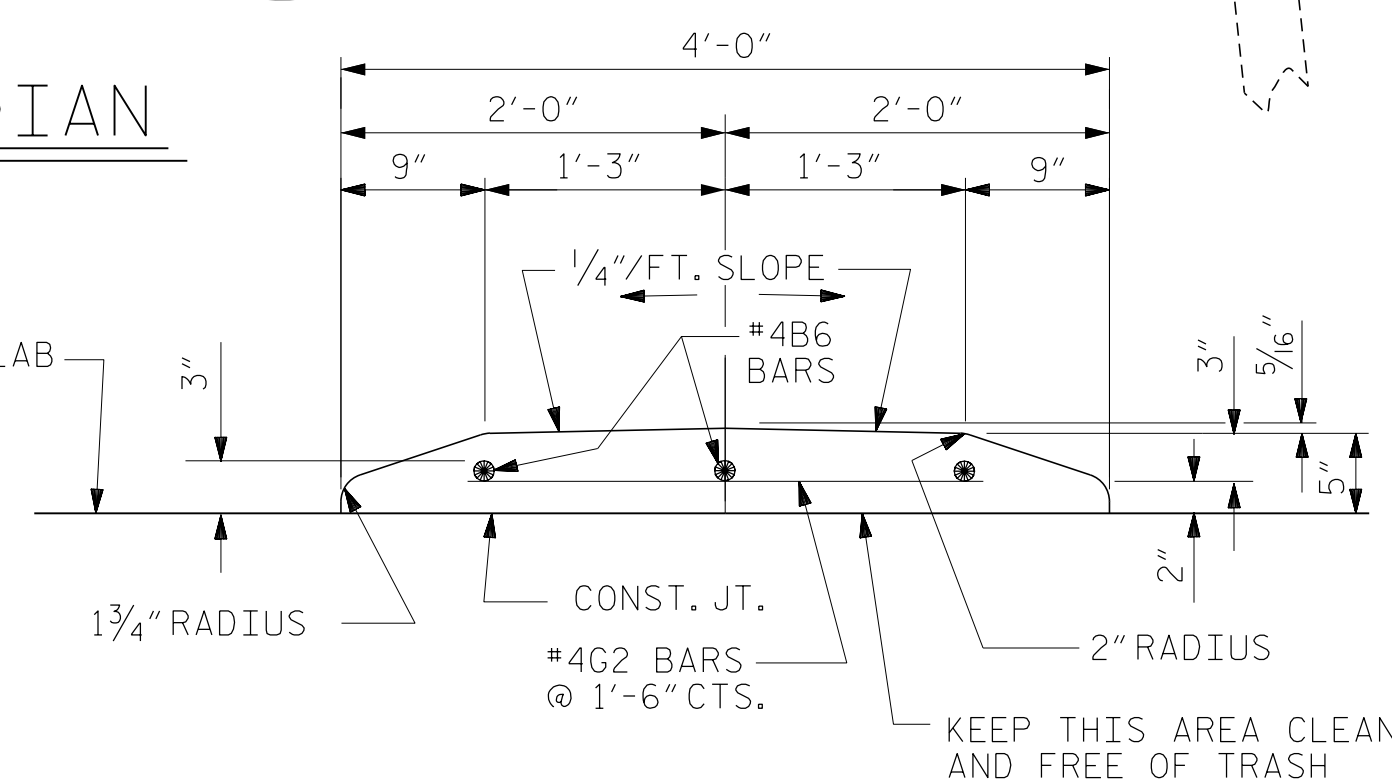
GROOVED CONTRACTION JOINTS, 1/2" IN DEPTH, SHALL BE TOOLED IN ALL EXPOSED FACES OF THE SIDEWALK IN ACCORDANCE WITH ARTICLE 825-10(B) OF THE STANDARD SPECIFICATIONS. THE CONTRACTION JOINTS SHALL BE LOCATED AT A SPACING OF 8 FT. TO 10 FT. BETWEEN EXPANSION JOINTS. NO CONTRACTION JOINTS WILL BE REQUIRED FOR SEGMENTS LESS THAN 10 FEET IN LENGTH.

PAYMENT FOR SIDEWALK AND MONOLITHIC CONCRETE ISLAND SHALL BE INCLUDED IN PAY ITEM FOR "REINFORCED CONCRETE DECK SLAB".

FOR SIDEWALK & MONOLITHIC CONCRETE ISLAND QUANTITIES, SEE SUPERSTRUCTURE BILL OF MATERIAL SHEET.



SECTION THRU SIDEWALK



SECTION THRU MONOLITHIC CONCRETE ISLAND



Designed by: **Jeff Loftus**
2/2/2017

PROJECT NO. R-2707C
CLEVELAND COUNTY
STATION: 24+07.99 -Y9- POT

STATE OF NORTH CAROLINA
DEPARTMENT OF TRANSPORTATION
RALEIGH

SUPERSTRUCTURE
SIDEWALK AND MONOLITHIC
CONCRETE ISLAND DETAILS

Firm License No. C-1051
421 Fayetteville St,
Suite 400
Raleigh, NC 27601
T 919.380.8750
www.stewartinc.com



REVISIONS						SHEET NO. S6-11
NO.	BY:	DATE:	NO.	BY:	DATE:	
1			3			TOTAL SHEETS 37
2			4			

STR. #6

DRAWN BY: J. LOFTUS DATE: 07-16
CHECKED BY: H. ASSFOURA DATE: 11-16
DESIGN ENGINEER OF RECORD: J. LOFTUS DATE: 07-16

R 2707C-6
2/2/2017
...\\406-021-R2707C-SMU-SW1-S6-11.dgn
USER:jeffloftus