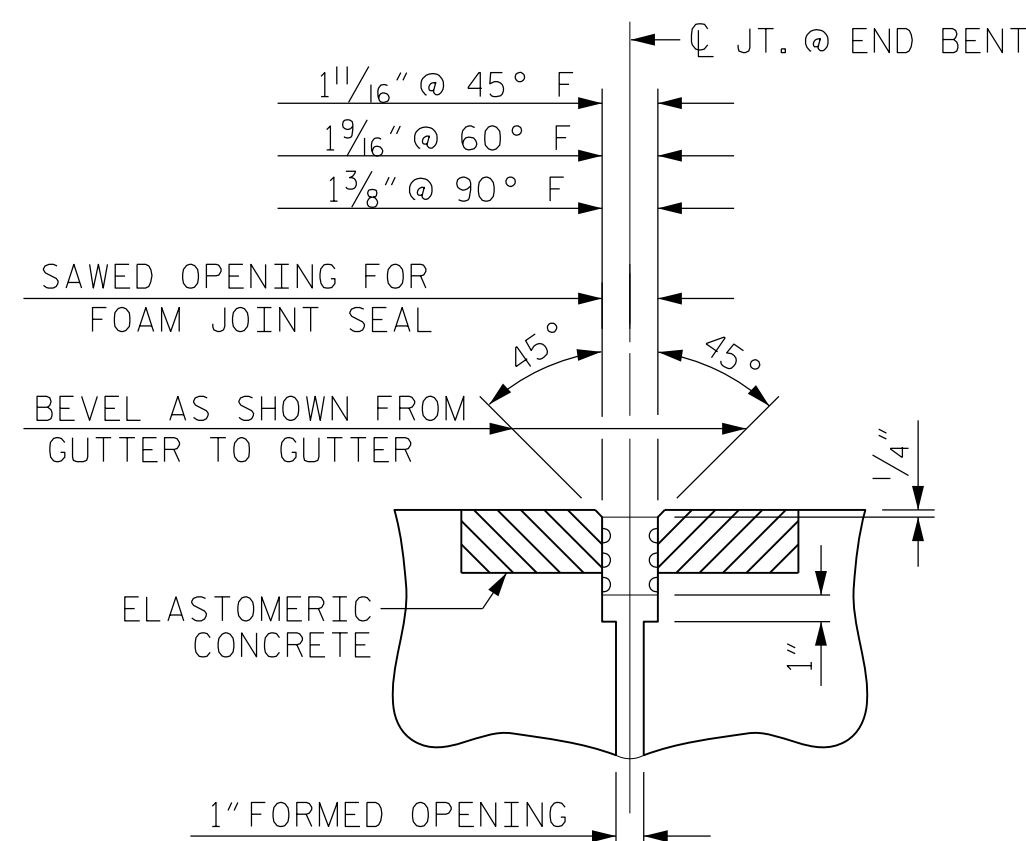


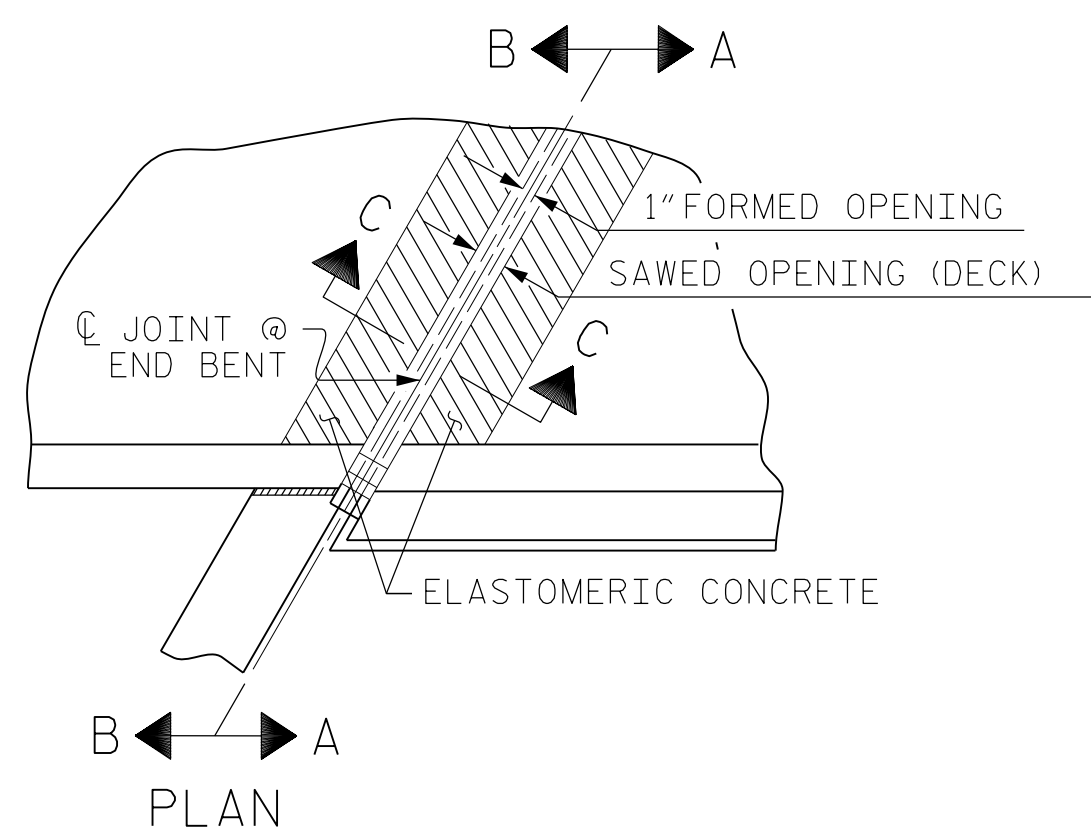
SECTION C-C  
FOAM JOINT SEAL  
(PRE-SAWED ELASTOMERIC  
CONCRETE DIMENSIONS)



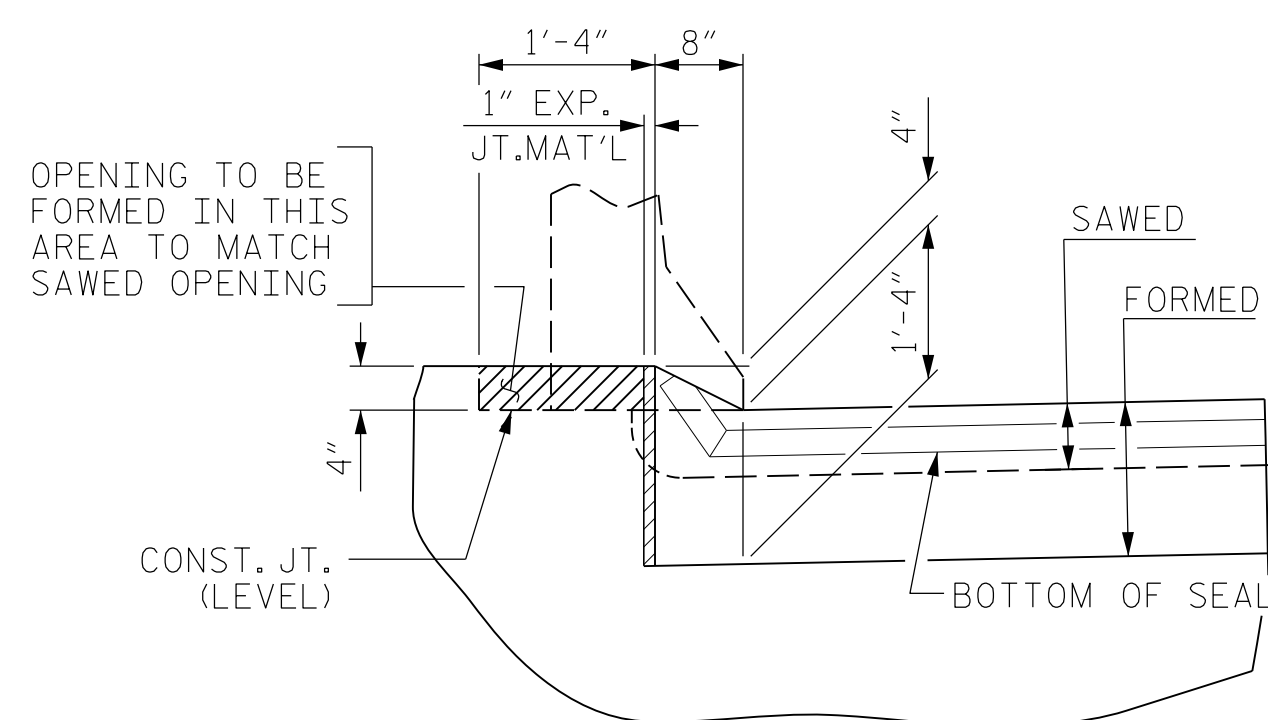
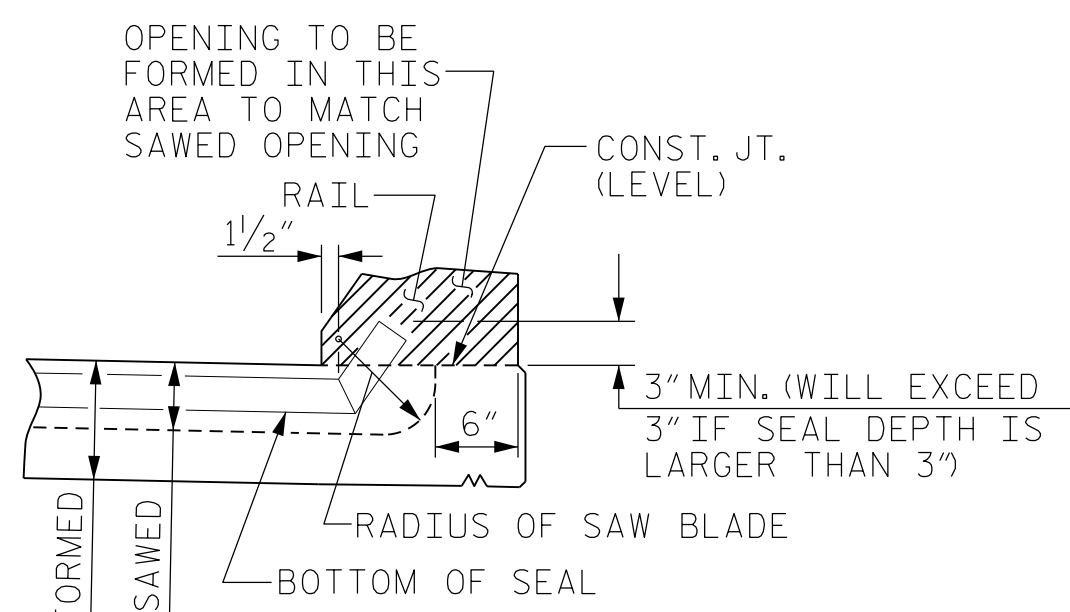
SECTION C-C  
FOAM JOINT SEAL  
(EXPANSION)

ELASTOMERIC CONCRETE	
END BENT NO.	ELASTOMERIC CONCRETE * (CU. FT.)
1	6.4
2	6.4
TOTAL	12.8

\* BASED ON THE MINIMUM BLOCKOUT SHOWN.

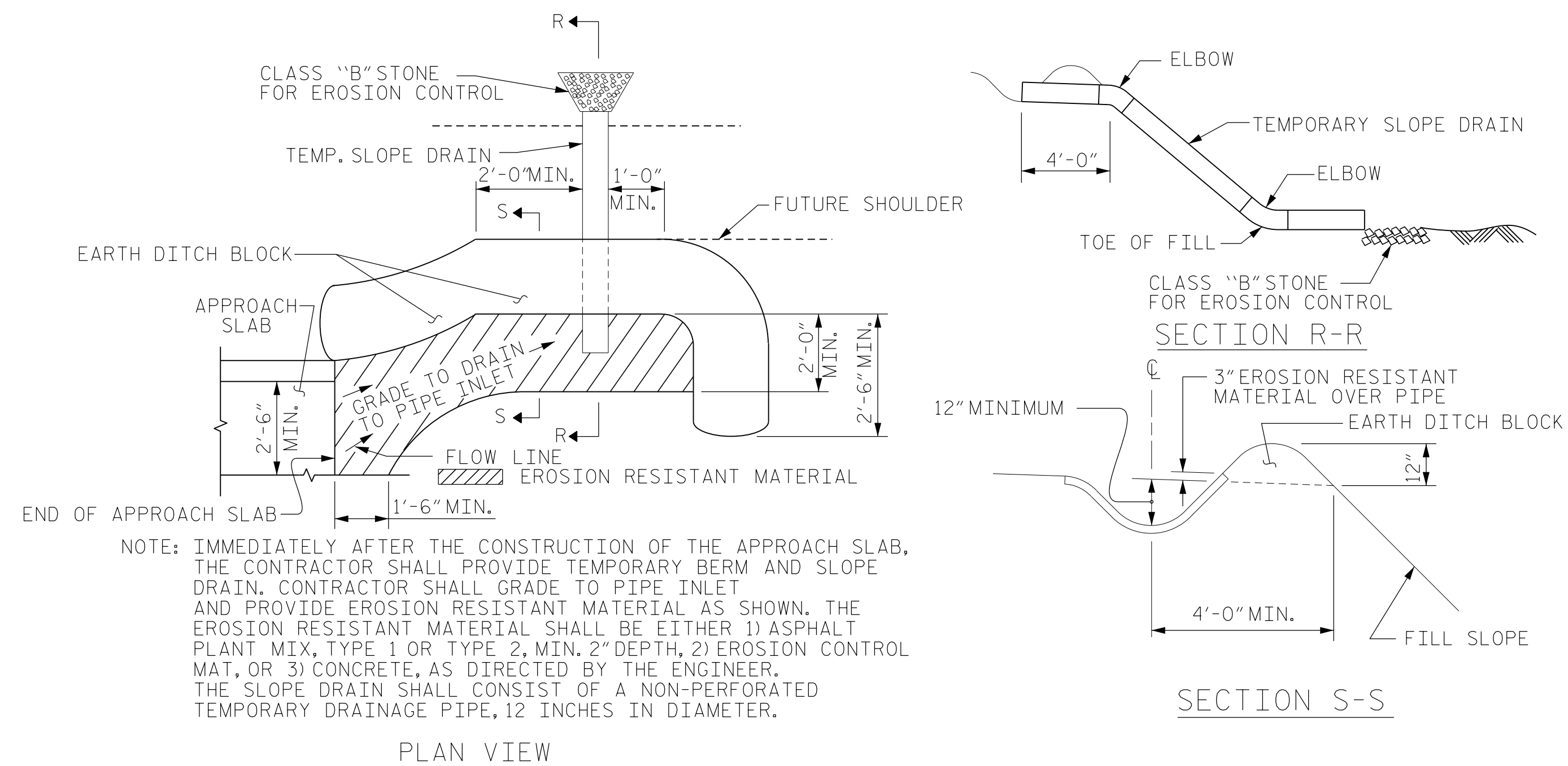


SECTION A-A



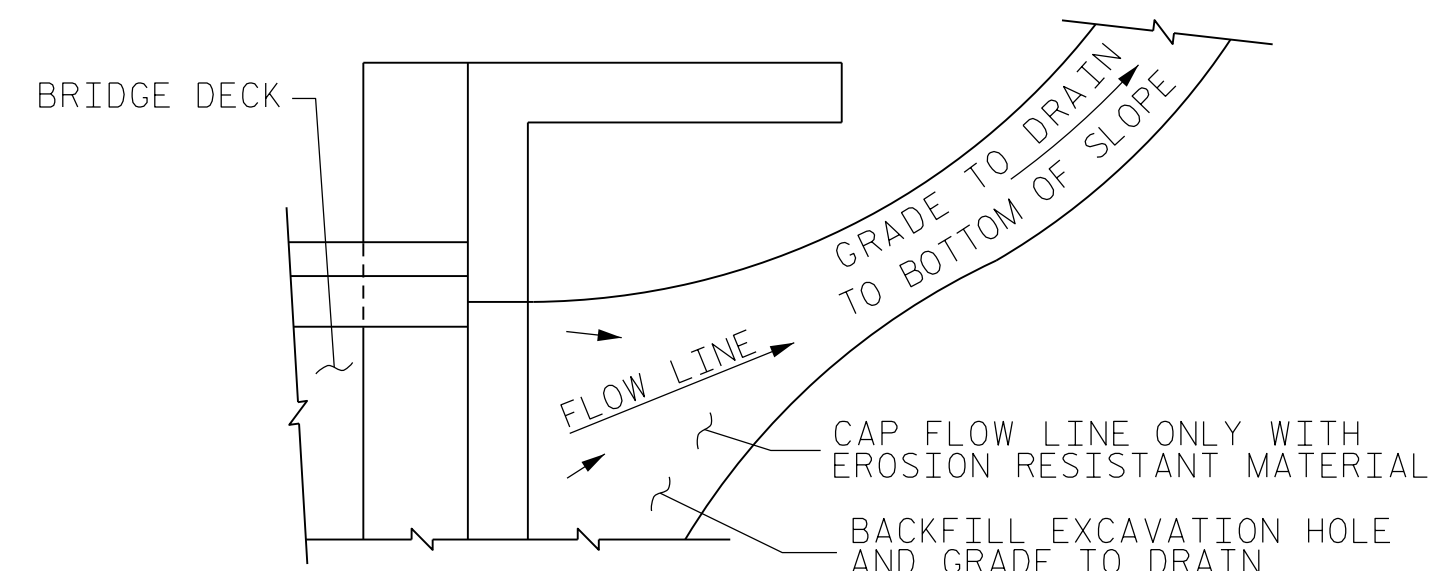
SECTION B-B  
JOINT SEAL DETAILS @ END BENT

FOAM JOINT SEAL TO BE CUT, HEAT WELDED AND TURNED UP PARALLEL TO SLOPED FACE OF THE BARRIER RAIL.  
THE JOINT SHALL BE SAWED PRIOR TO THE CASTING OF THE BARRIER RAIL.



TEMPORARY BERM AND SLOPE DRAIN DETAILS

(TO BE USED WHEN SHOULDER BERM GUTTER IS REQUIRED)



NOTE: IF THE APPROACH SLAB IS NOT CONSTRUCTED IMMEDIATELY AFTER THE BACKFILLING OF THE END BENT EXCAVATION, GRADE TO DRAIN TO THE BOTTOM OF THE SLOPE AND PROVIDE EROSION RESISTANT MATERIAL, SUCH AS FIBERGLASS ROVING OR AS DIRECTED BY THE ENGINEER TO PREVENT SOIL EROSION AND TO PROTECT THE AREA ADJACENT TO THE STRUCTURE. THE CONTRACTOR WILL BE REQUIRED TO REMOVE THESE MATERIALS PRIOR TO CONSTRUCTION OF THE APPROACH SLAB.

TEMPORARY DRAINAGE DETAIL



DocuSigned by:  
Jeff Loftus 2/3/2017

Firm License No. C-1051  
421 Fayetteville St,  
Suite 400  
Raleigh, NC 27601  
T 919.380.8750  
www.stewartinc.com

STEWART

PROJECT NO. R-2707C  
CLEVELAND COUNTY  
STATION: 24+05.50-Y4-REV POT

SHEET 2 OF 2

STATE OF NORTH CAROLINA  
DEPARTMENT OF TRANSPORTATION  
RALEIGH

BRIDGE APPROACH  
SLAB DETAILS

REVISIONS						SHEET NO.
NO.	BY:	DATE:	NO.	BY:	DATE:	S5-29
1			3			TOTAL SHEETS
2			4			29

STR. #5

STD. NO. BAS4

R 2707C-5

2/3/2017  
\\405-057-R2707C-SMU-AS02-S5-29.dgn  
USERdefault

DRAWN BY: H.ASSFOURA DATE: 04/16  
CHECKED BY: J.LOFTUS DATE: 11/16  
DESIGN ENGINEER OF RECORD: J.LOFTUS DATE: 01/17