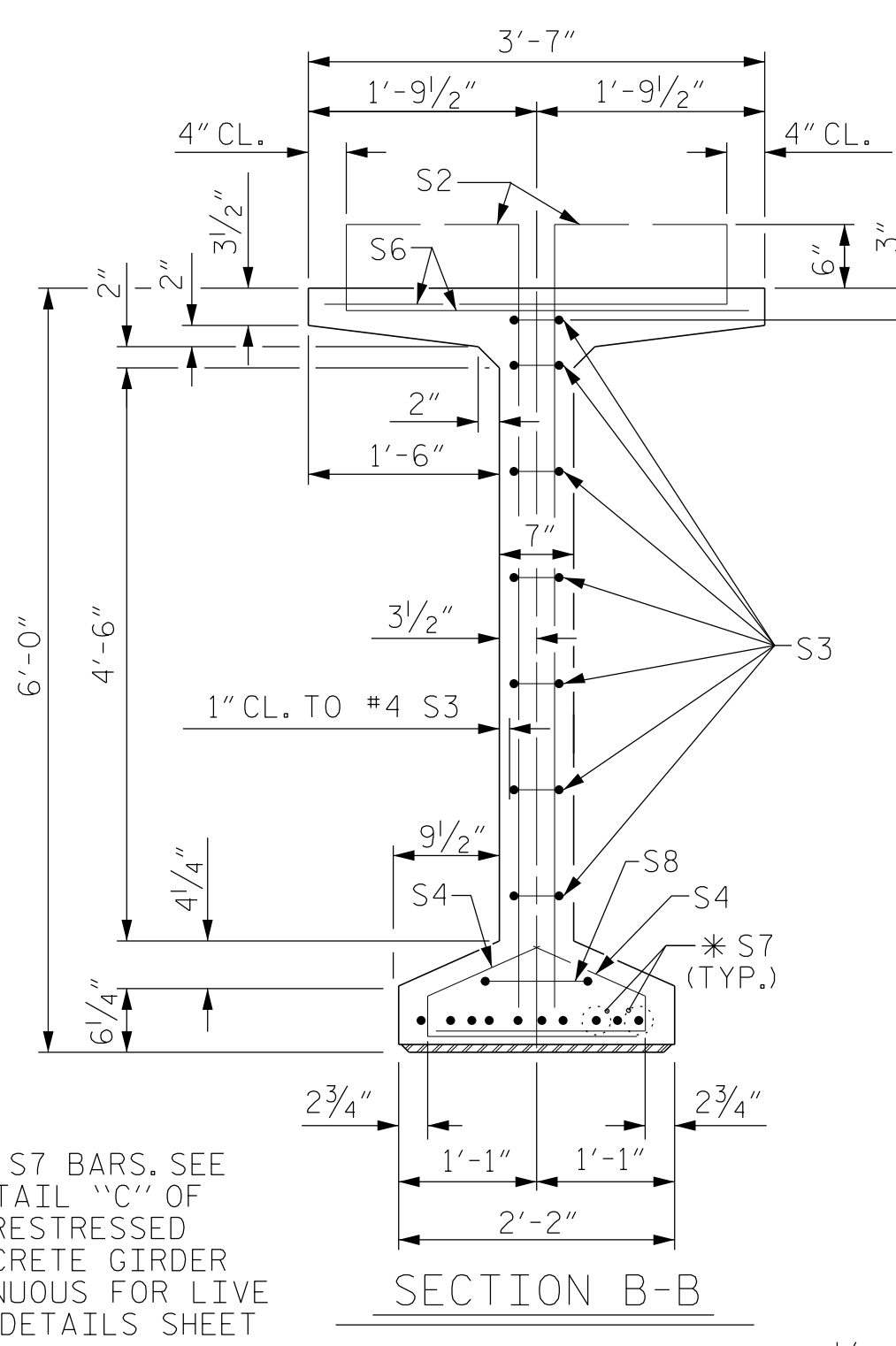
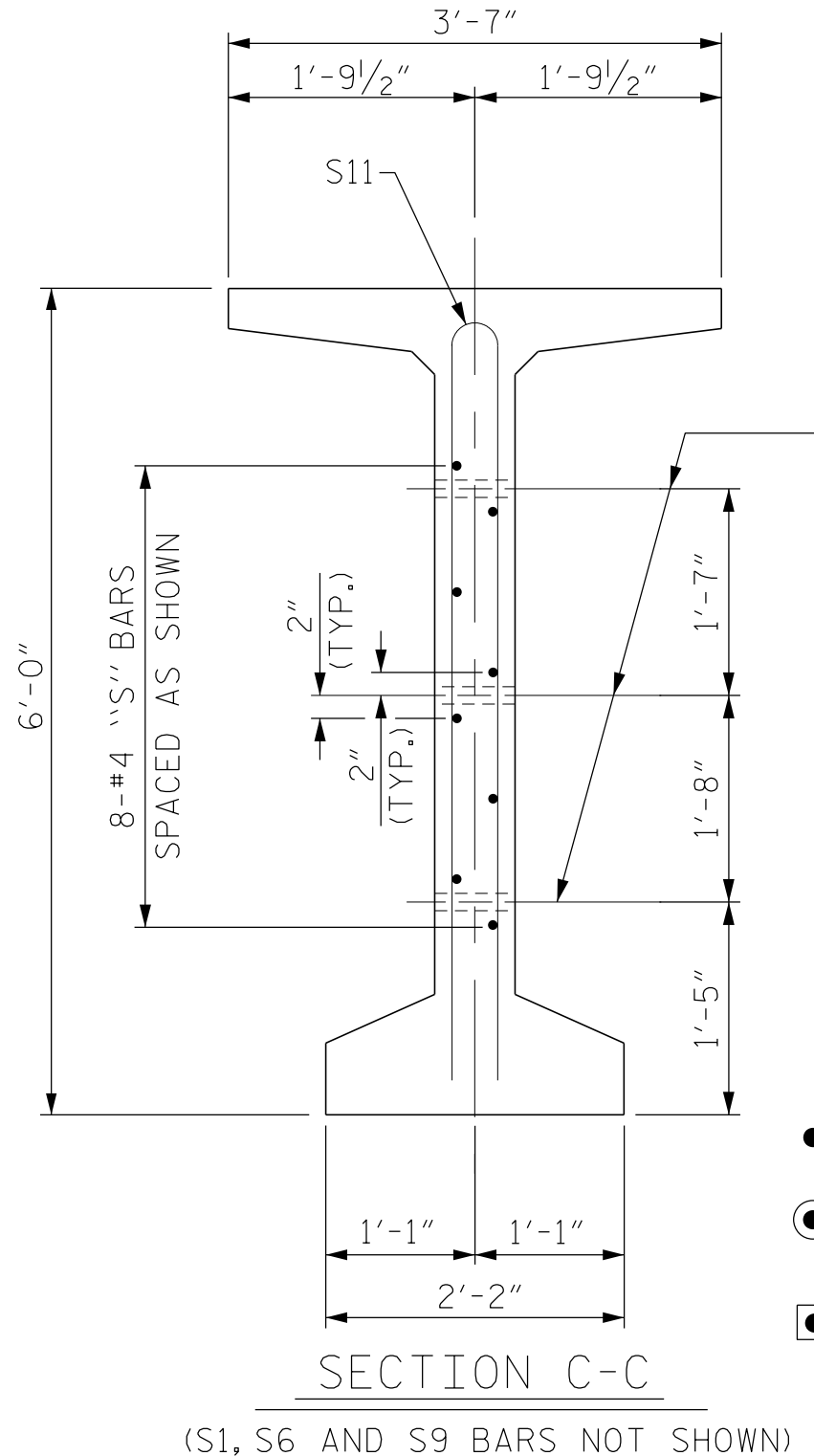


SECTION A-A



SECTION B-B



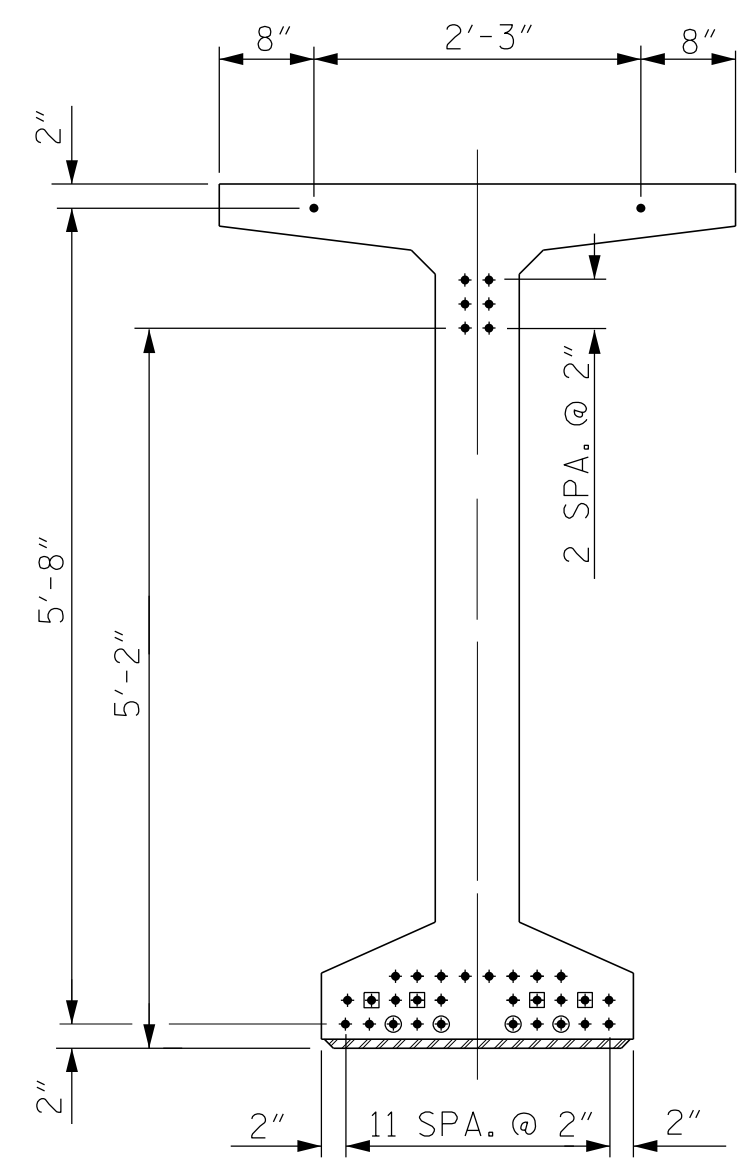
SECTION C-C

(S1, S6 AND S9 BARS NOT SHOWN)

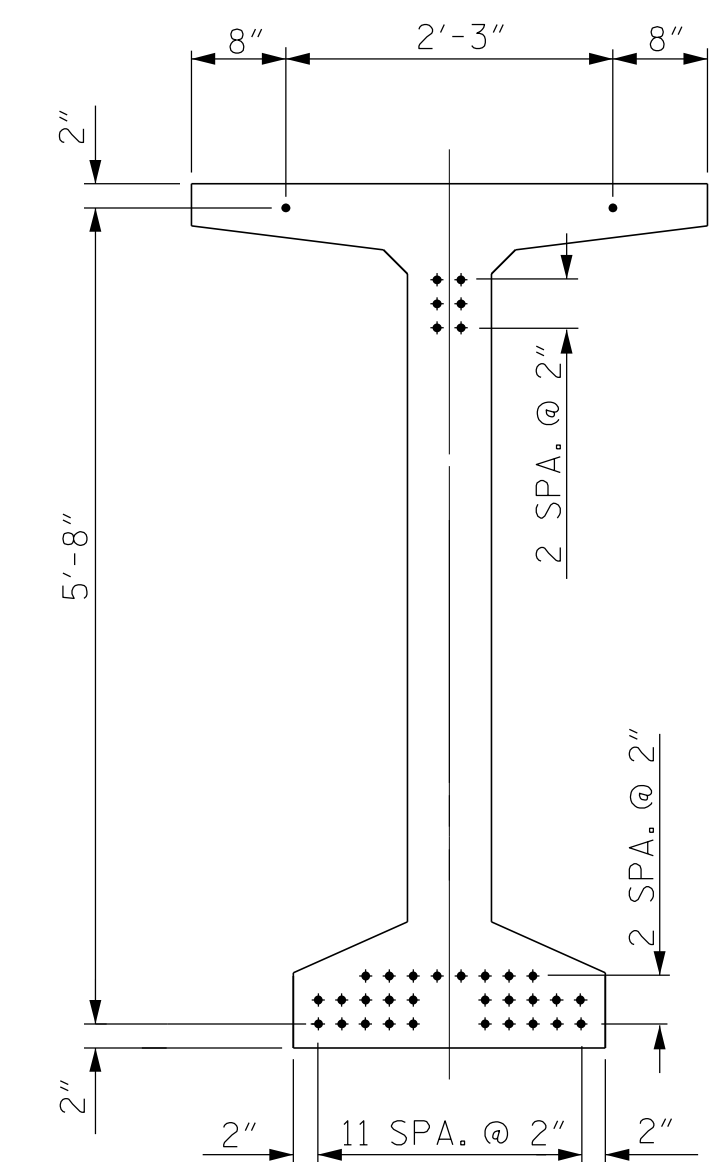
1/2" Ø FORMED HOLE. SEE ELEVATION FOR LOCATION.

DEBONDING LEGEND

- FULLY BONDED STRANDS
- STRANDS DEBONDED FOR 8'-0" FROM END OF GIRDER
- ◻ STRANDS DEBONDED FOR 4'-0" FROM END OF GIRDER



AT END OF GIRDER



AT C OF GIRDER

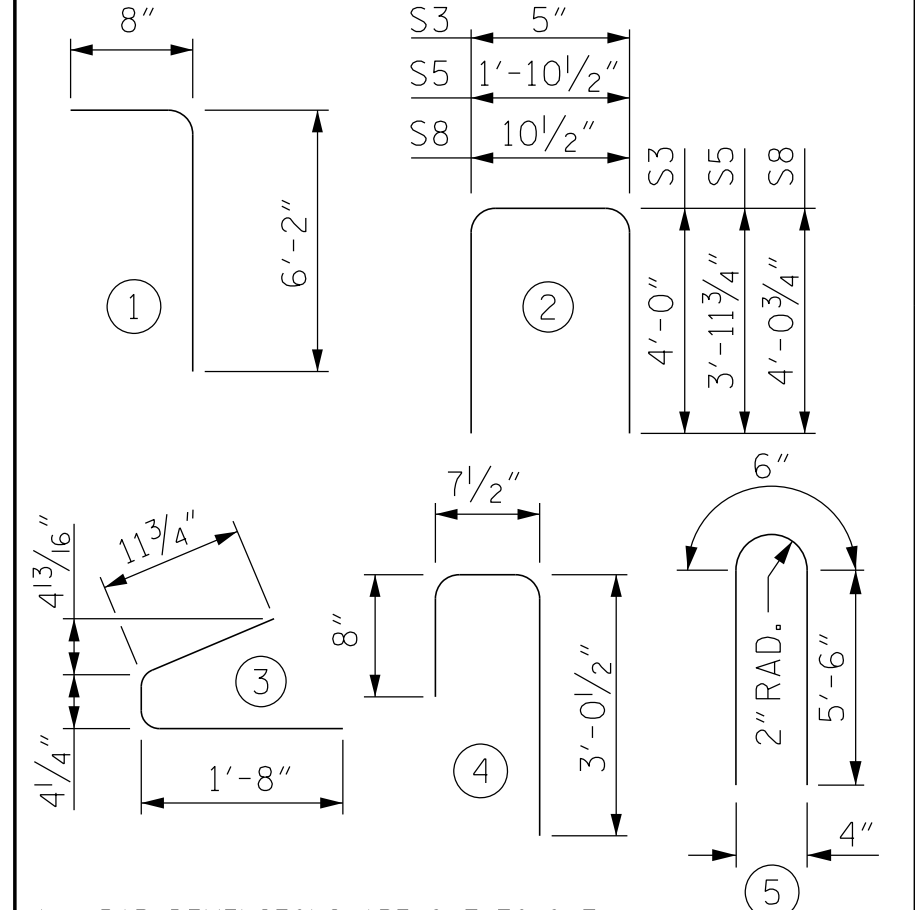
0.6" Ø LOW RELAXATION STRAND LAYOUT

\*FOR S7 BARS, SEE DETAIL "C" OF PRESTRESSED CONCRETE GIRDER CONTINUOUS FOR LIVE LOAD DETAILS SHEET

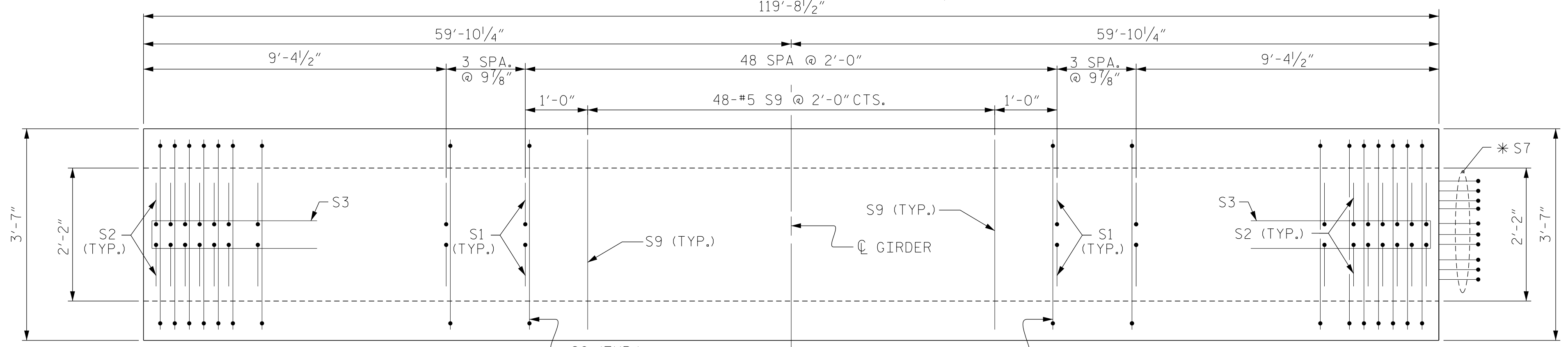
EXTERIOR GDR.	S11	8	#5	5	11'-6"	96
INTERIOR GDR.	S11	16	#5	5	11'-6"	192
EXTERIOR GDR.	S12	16	#4	STR	8'-0"	86
INTERIOR GDR.	S13	16	#4	STR	14'-3"	152

\*NOTE: S7 BARS SHALL BE BENT BEFORE SHIPMENT. HEAT BENDING SHALL NOT BE ALLOWED.

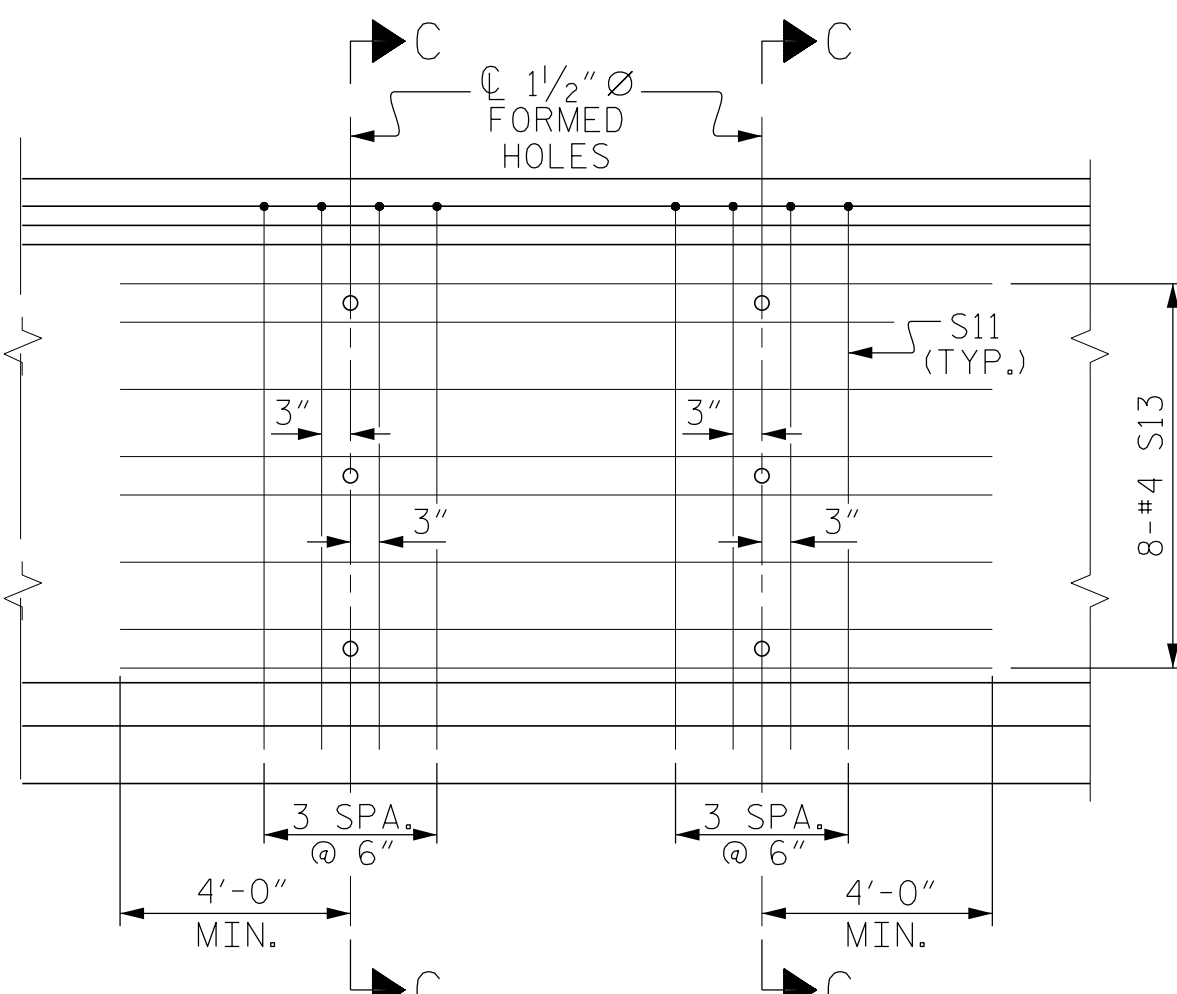
BAR TYPES



ALL BAR DIMENSIONS ARE OUT-TO-OUT

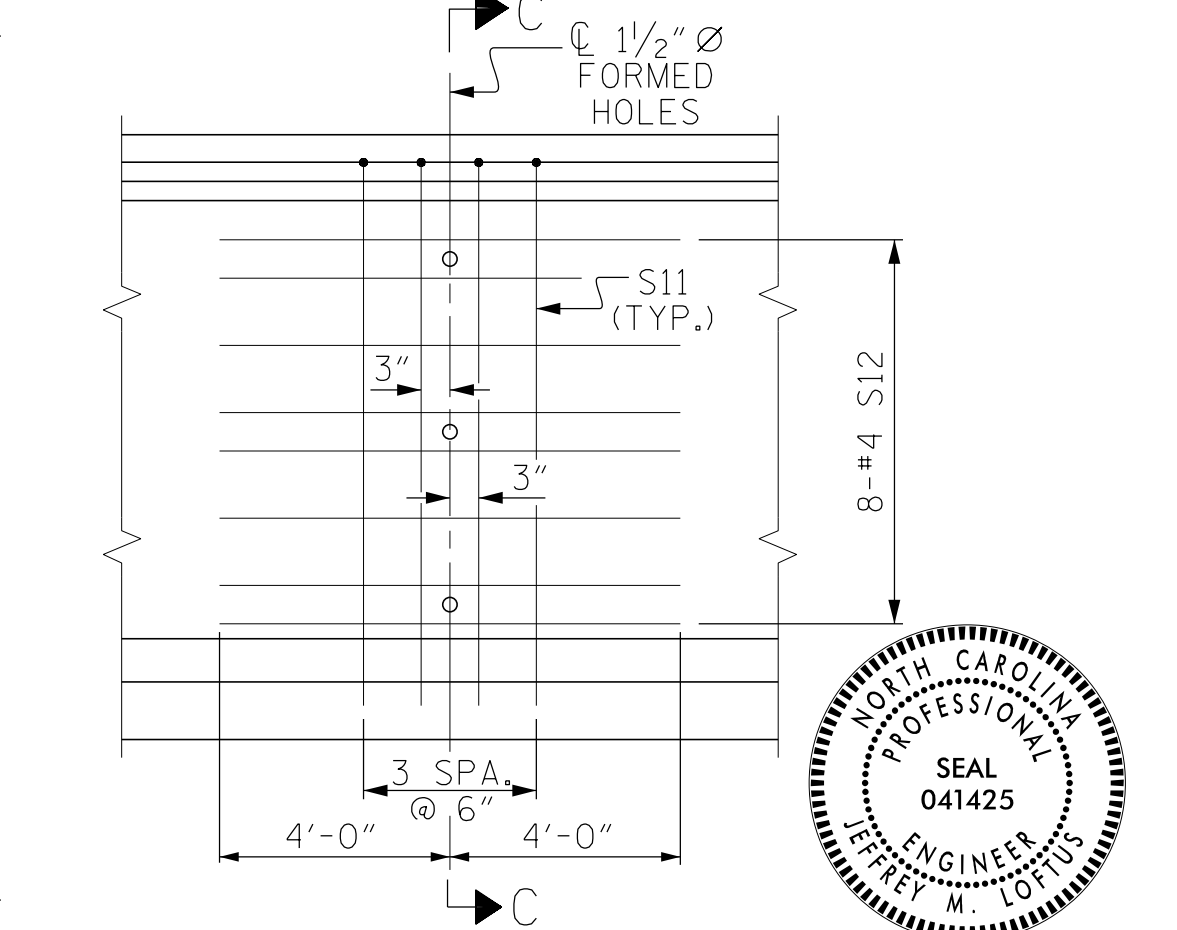


PLAN OF GIRDER



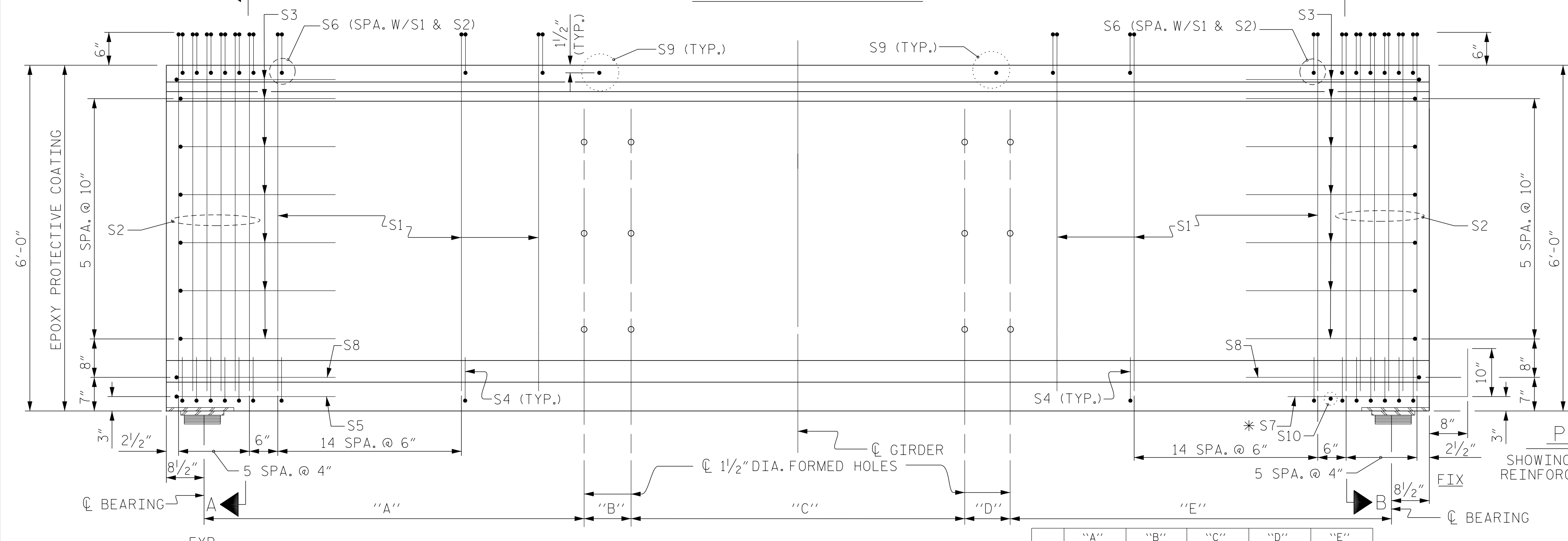
PARTIAL ELEVATION

SHOWING INTERMEDIATE STEEL DIAPHRAGM REINFORCING STEEL FOR GIRDER Nos. 2 & 3



PARTIAL ELEVATION

SHOWING INTERMEDIATE STEEL DIAPHRAGM REINFORCING STEEL FOR GIRDER Nos. 1 & 4



ELEVATION OF GIRDER

	"A"	"B"	"C"	"D"	"E"
A1	36'-3 3/4"	0"	39'-5 3/8"	0"	42'-6 5/8"
A2	36'-3 3/4"	6'-2 7/8"	33'-2 5/8"	6'-2 7/8"	36'-3 3/4"
A3	36'-3 3/4"	6'-2 7/8"	33'-2 5/8"	6'-2 7/8"	36'-3 3/4"
A4	42'-6 5/8"	0"	39'-5 3/8"	0"	36'-3 3/4"

QUANTITIES FOR ONE GIRDER

	REINFORCING STEEL	9,000 PSI CONCRETE	0.6" Ø L.R. STRANDS
	LB.	C.Y.	No.
EXTERIOR GIRDER	2,873	25.7	36
INTERIOR GIRDER	3,035	25.7	36

GIRDERS REQUIRED

NUMBER	LENGTH	TOTAL LENGTH
4	119'-8 1/2"	478'-10"

PROJECT NO. R-2707C  
CLEVELAND COUNTY  
STATION: 24+05.50-Y4-REV POT

SHEET 1 OF 4



DocuSigned by: Jeff Loftus 2/3/2017

Firm License No. C-1051  
421 Fayetteville St,  
Suite 400  
Raleigh, NC 27601  
T 919.380.8750  
www.stewartinc.com



REVISIONS						SHEET NO.
NO.	BY:	DATE:	NO.	BY:	DATE:	S5-10
1			3			TOTAL SHEETS
2			4			29

STR. #5 STD. NO. PCC8

2/3/2017  
 \\405-019-R2707C-SMU-PCG01-S5-10.dgn  
 USER:JLofut

DRAWN BY: H.ASSFOURA DATE: 02/16  
 CHECKED BY: J.LOFTUS DATE: 11/16  
 DESIGN ENGINEER OF RECORD: J.LOFTUS DATE: 01/17