

FOUNDATION LAYOUT

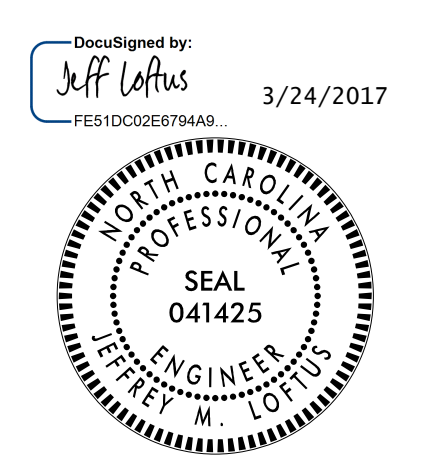
DIMENSIONS LOCATING PILES ARE SHOWN TO PILE CENTERLINE AT BOTTOM OF CAP

NOTES

- FOR PILES, SEE GEOTECHNICAL SPECIAL PROVISIONS AND SECTION 450 OF THE STANDARD SPECIFICATIONS.
- PILES AT END BENT NO.1 ARE DESIGNED FOR A FACTORED RESISTANCE OF 105 TONS PER PILE.
- PILES AT END BENT NO.2 ARE DESIGNED FOR A FACTORED RESISTANCE OF 100 TONS PER PILE.
- DRIVE PILES AT END BENT NO.1 AND END BENT NO.2 TO A REQUIRED DRIVING RESISTANCE OF 175 TONS PER PILE.
- IT HAS BEEN ESTIMATED THAT A HAMMER WITH AN EQUIVALENT RATED ENERGY IN THE RANGE OF 40 TO 50 FT.-KIPS PER BLOW WILL BE REQUIRED TO DRIVE PILES AT END BENT NO.1 AND END BENT NO.2. THIS ESTIMATED ENERGY RANGE DOES NOT RELEASE THE CONTRACTOR FROM PROVIDING EQUIPMENT IN ACCORDANCE WITH THE PILE PROVISION.
- THE SPREAD FOOTINGS AT BENT NO.1 ARE DESIGNED FOR A FACTORED RESISTANCE OF 3 TSF. CHECK FIELD CONDITIONS FOR THE REQUIRED RESISTANCE OF 6.6 TSF JUST BEFORE PLACING CONCRETE.
- FOOTING EXCAVATIONS AT BENT NO.1 WILL EXTEND INTO MATERIAL THAT DETERIORATES WHEN EXPOSED TO THE ELEMENTS. CHECK FIELD CONDITIONS TO THE REQUIRED RESISTANCE AND PLACE CONCRETE IMMEDIATELY AFTER THE EXCAVATION IS COMPLETED.

PROJECT NO. R-2707C
CLEVELAND COUNTY
 STATION: 24+05.50-Y4-REV POT

SHEET 2 OF 4



**DOCUMENT NOT CONSIDERED FINAL
 UNLESS ALL SIGNATURES COMPLETED**

STEWART
 Firm License No. C-1051
 421 Fayetteville St,
 Suite 400
 Raleigh, NC 27601
 T 919.380.8750
 www.stewartinc.com

STATE OF NORTH CAROLINA DEPARTMENT OF TRANSPORTATION RALEIGH					
FOUNDATION LAYOUT					
REVISIONS				SHEET NO.	
NO.	BY:	DATE:	NO.	BY:	DATE:
1			3		
2			4		
					TOTAL SHEETS
					29

DRAWN BY: <u>H.ASSFOURA</u>	DATE: <u>03/16</u>
CHECKED BY: <u>J.LOFTUS</u>	DATE: <u>11/16</u>
DESIGN ENGINEER OF RECORD: <u>J.LOFTUS</u>	DATE: <u>01/17</u>

STR. #5

R 2707C-5
 3/24/2017
 \\405-003-R2707C-SMU-FL01-S5-2.dgn
 USERdefault