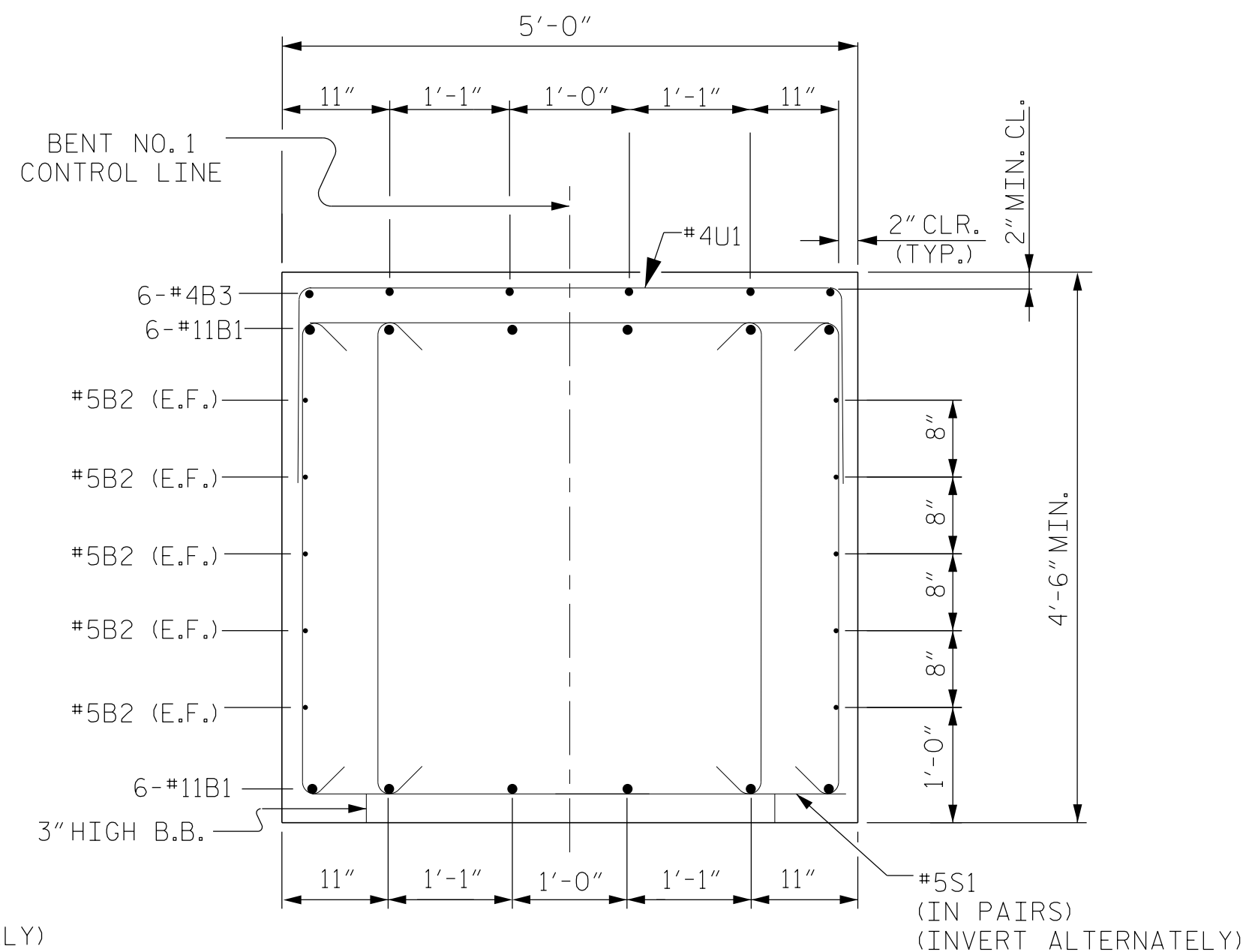
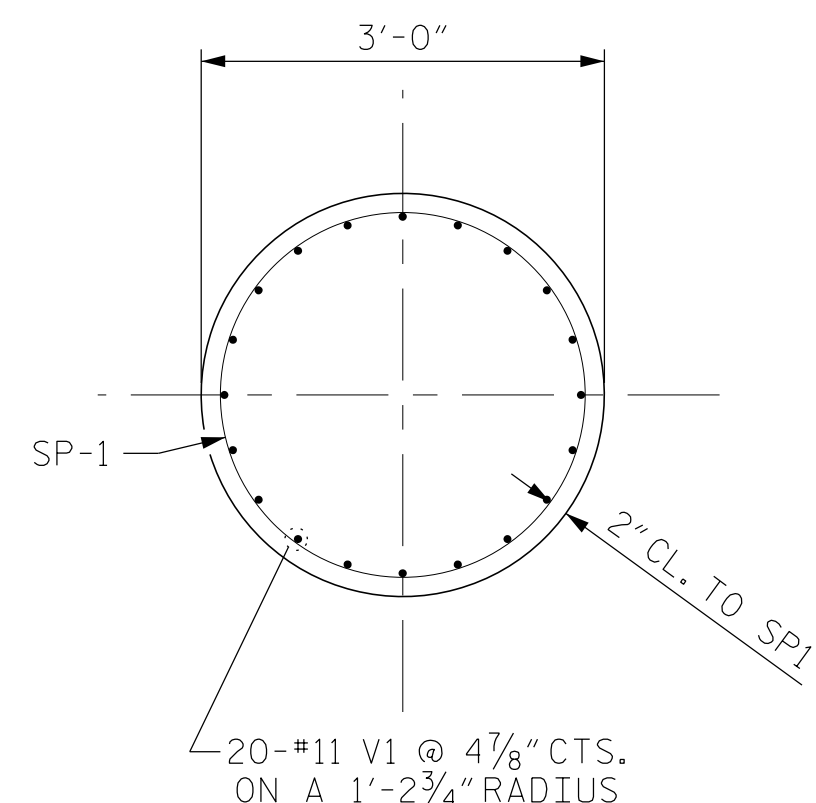


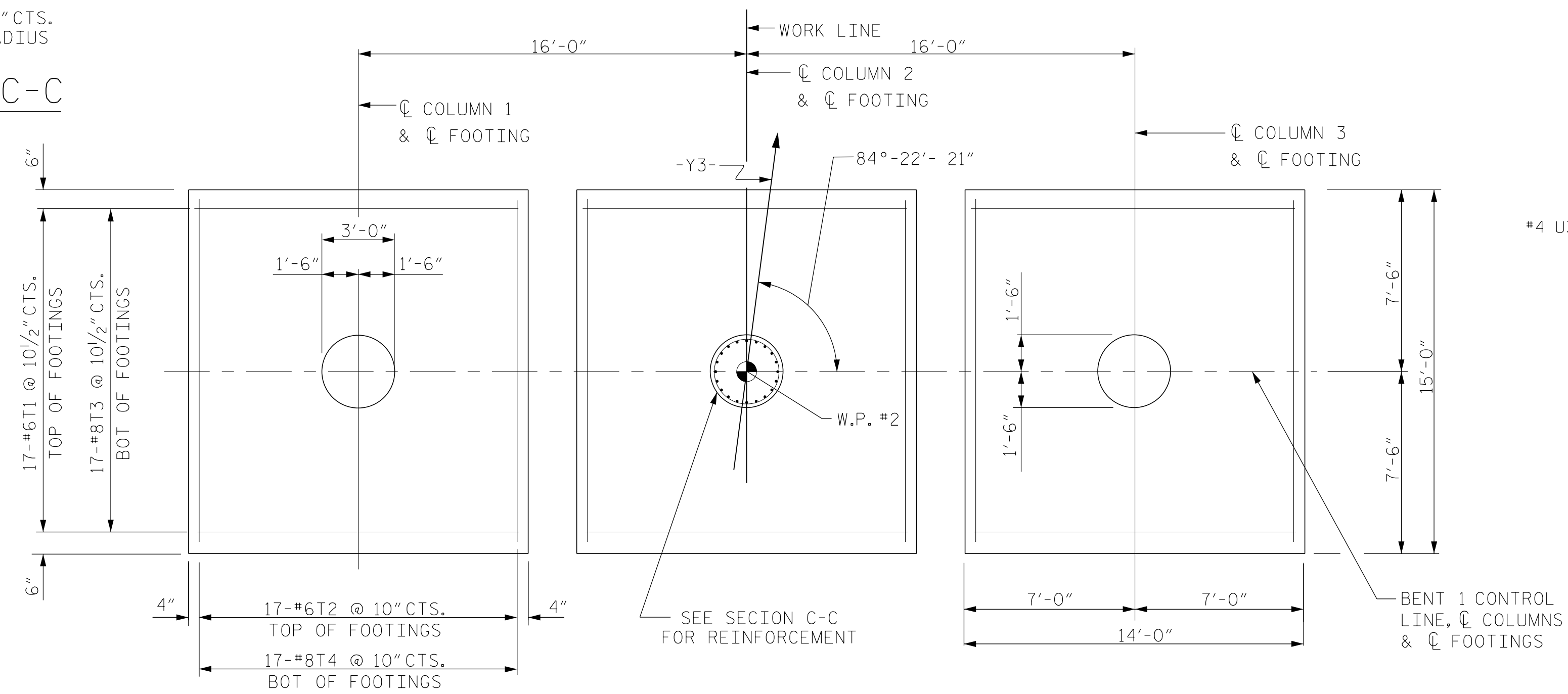
SECTION X-X



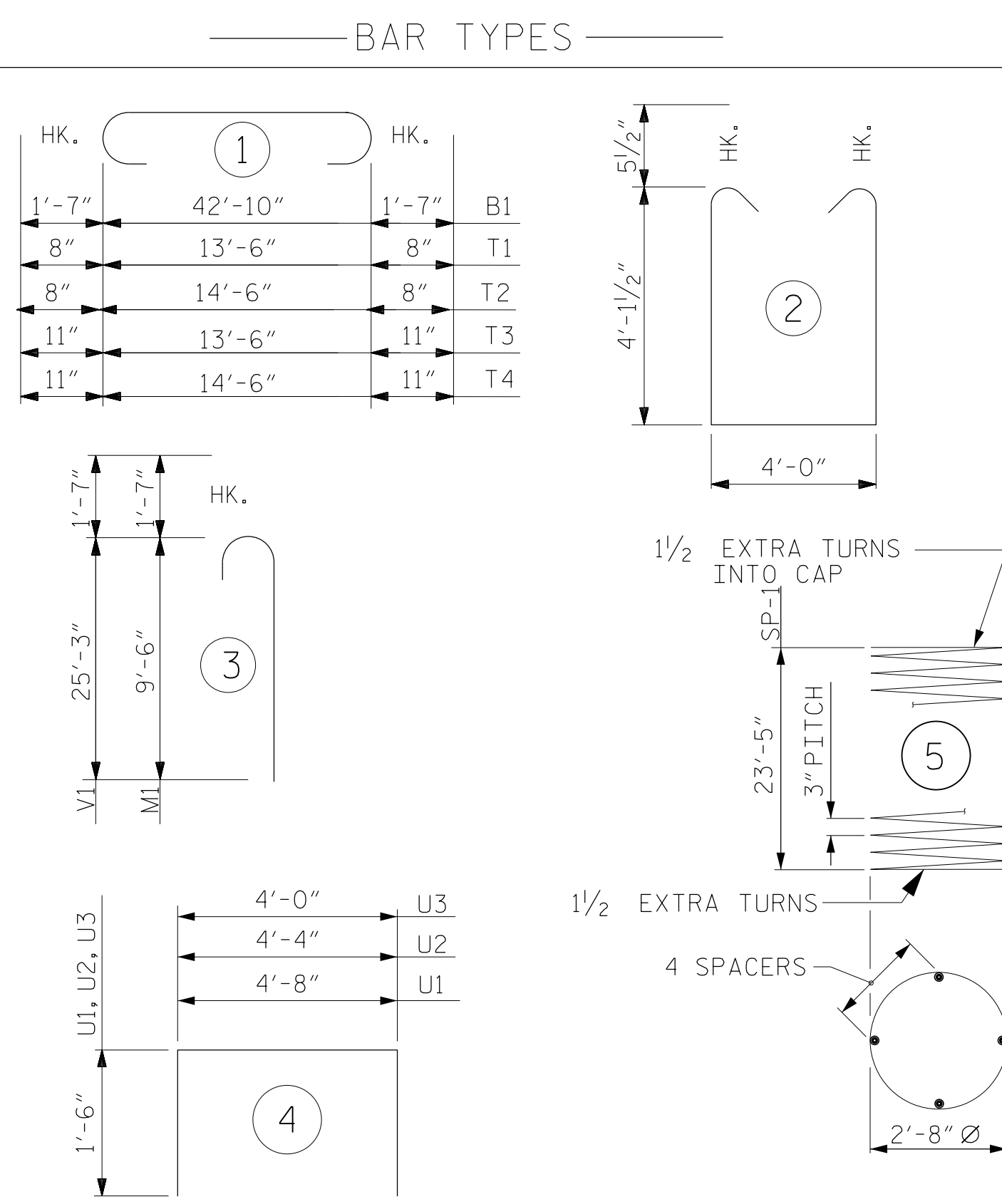
SECTION Y-Y



SECTION C-C



PLAN OF FOOTINGS



ALL BAR DIMENSIONS ARE OUT TO OUT.

BILL OF MATERIAL FOR BENT NO. 1

BAR	NO.	SIZE	TYPE	LENGTH	WEIGHT
B1	12	#11	1	46'-0"	2,933
B2	10	#5	STR	43'-0"	448
B3	6	#4	STR	23'-7"	95
M1	60	#11	3	11'-1"	3,533
S1	136	#5	2	13'-2"	1,868
T1	51	#6	1	14'-10"	1,136
T2	51	#6	1	15'-10"	1,213
T3	51	#8	1	15'-4"	2,088
T4	51	#8	1	16'-4"	2,224
U1	52	#4	4	7'-8"	266
U2	8	#4	4	7'-4"	39
U3	10	#4	4	7'-0"	47
V1	60	#11	3	26'-10"	8,554

REINFORCING STEEL (BENT NO. 1) 24,444 LBS.

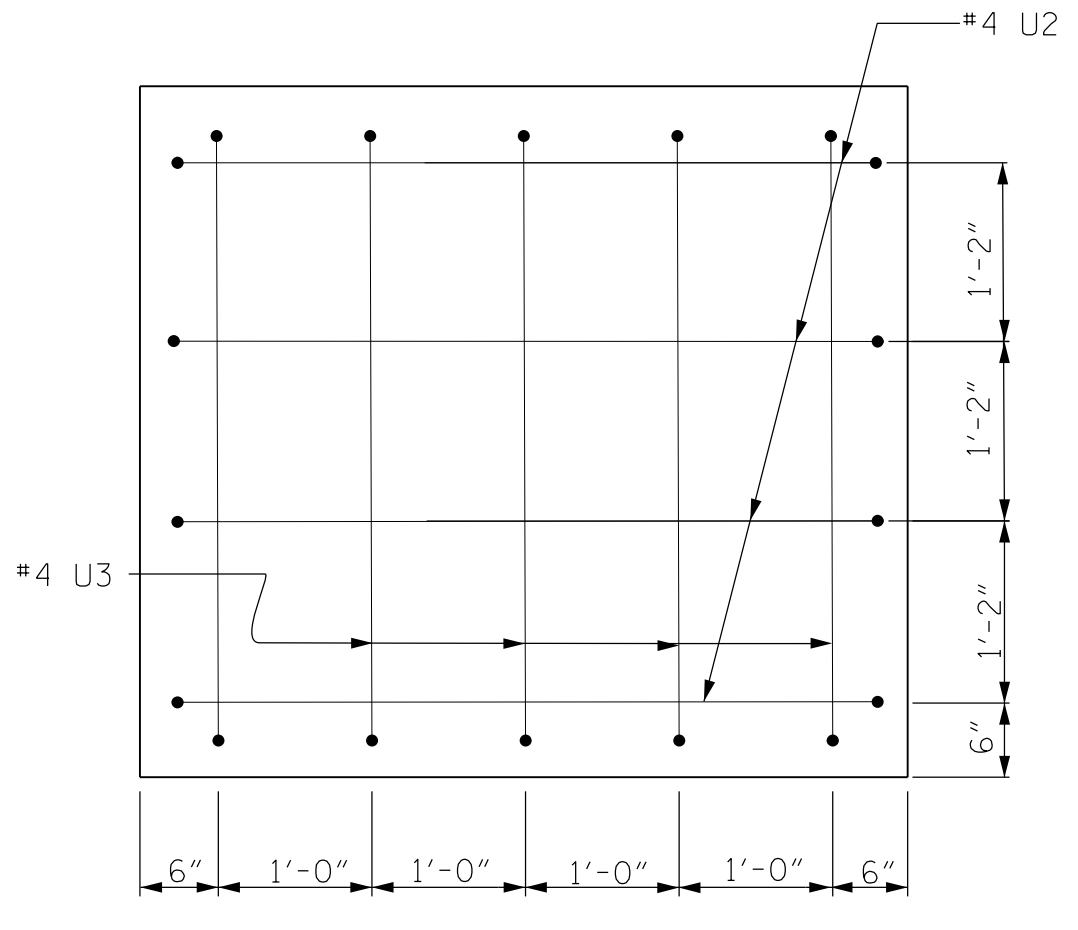
SP-1 3 * 5 797'-8" 1,599

SPIRAL COLUMN REINFORCING STEEL (BENT NO. 1) 1,599 LBS.

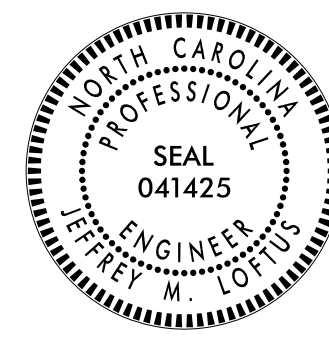
* THE SP-1 SPIRAL REINFORCING STEEL SHALL BE W20 OR D-20 COLD DRAWN WIRE OR #4 PLAIN OR DEFORMED BAR

CLASS A CONCRETE BREAKDOWN (FOR ONE BENT)

POUR #1 (FOOTINGS)	75.8 C.Y.
POUR #2 (COLUMNS)	18.2 C.Y.
POUR #3 (CAP)	37.9 C.Y.
TOTAL CLASS A CONCRETE	131.9 C.Y.
FOUNDATION EXCAVATION	LUMP SUM



END OF CAP VIEW



DocuSigned by: Jeff Capus 2/6/2017

Firm License No. C-1051
421 Fayetteville St., Suite 400
Raleigh, NC 27601
T 919.380.8750
www.stewartinc.com



PROJECT NO. R-2707C
CLEVELAND COUNTY
STATION: 20+70.23-Y3- POT

SHEET 2 OF 2

STATE OF NORTH CAROLINA
DEPARTMENT OF TRANSPORTATION
RALEIGH
SUBSTRUCTURE
BENT NO. 1

REVISIONS						SHEET NO.	
NO.	BY:	DATE:	NO.	BY:	DATE:	S4-23	
1			3			TOTAL SHEETS	
2			4			29	

STR. #4

R 2707C-SITE 3

2/6/2017
...\\04_045_R2707C_SMU_BENT1_S4-23.dgn
USER:JeffCapus
DRAWN BY: H.ASSFOURA DATE: 10/16
CHECKED BY: J.LOFIUS DATE: 11/16
DESIGN ENGINEER OF RECORD: J.LOFIUS DATE: 01/17