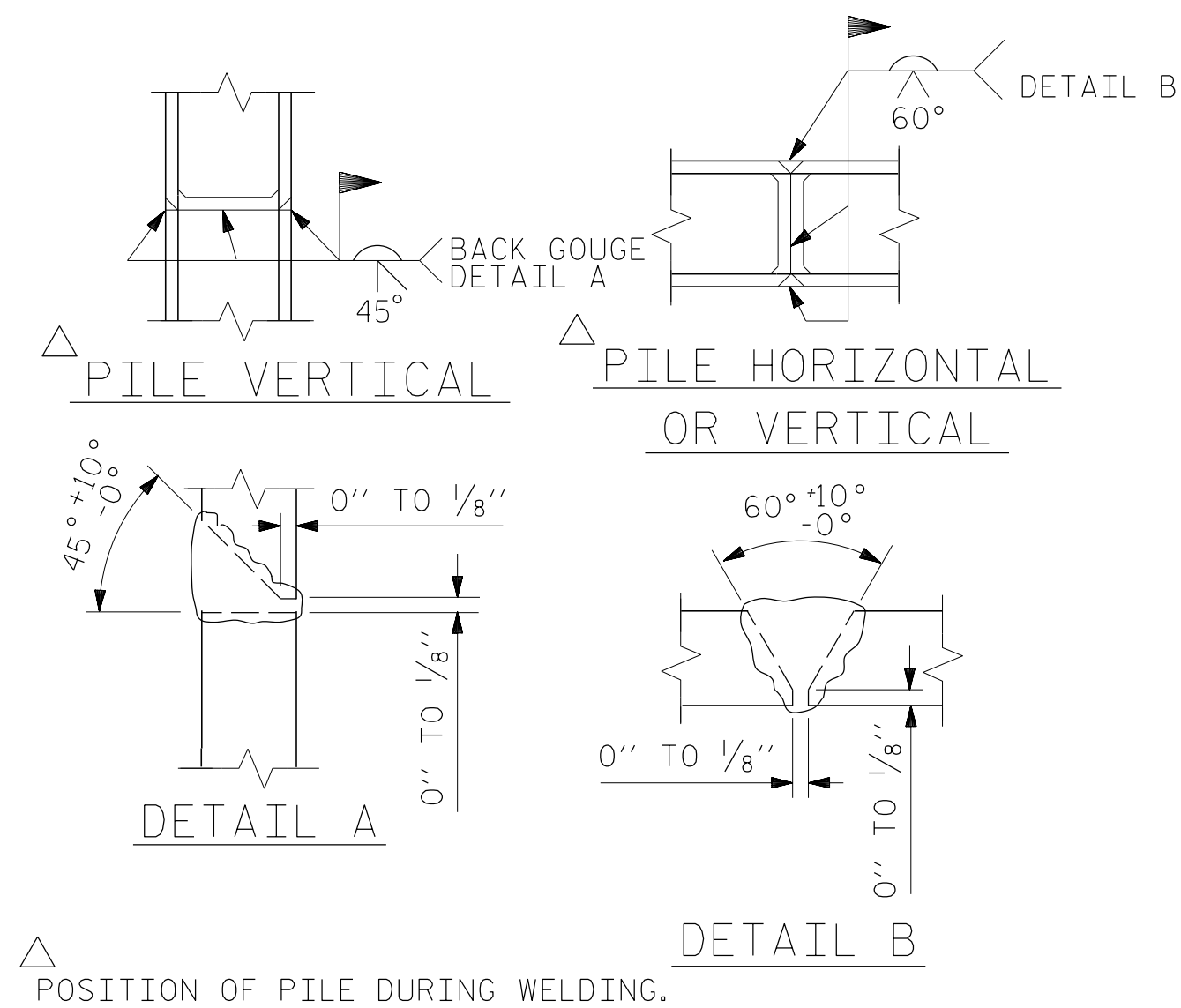


BAGGED STONE AND PIPE SHALL BE PLACED IMMEDIATELY AFTER COMPLETION OF END BENT EXCAVATION. PIPE MAY BE EITHER CONCRETE, CORRUGATED STEEL, CORRUGATED ALUMINUM ALLOY, OR CORRUGATED PLASTIC. PERFORATED PIPE WILL NOT BE ALLOWED.

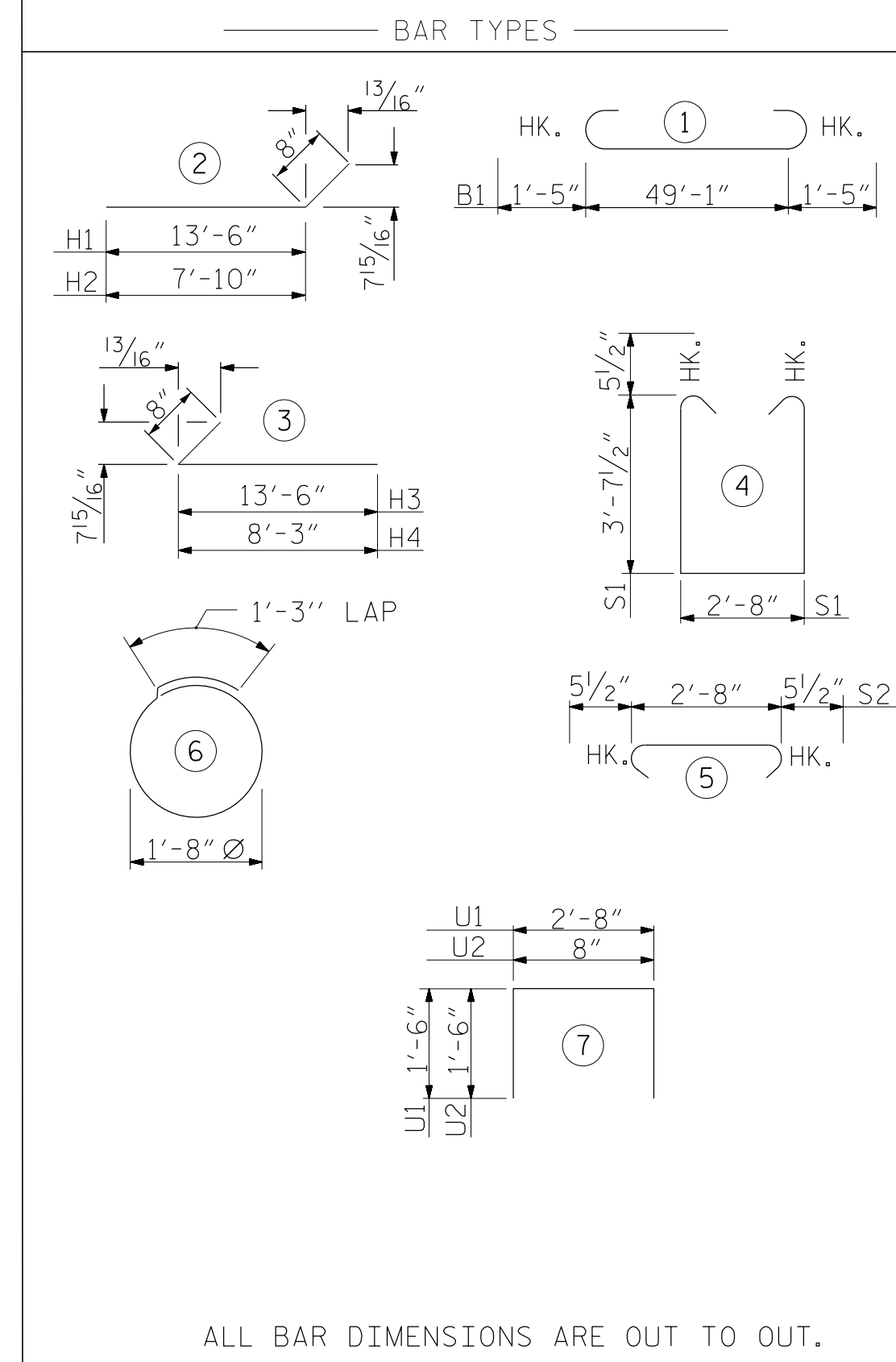
BAGGED STONE SHALL REMAIN IN PLACE UNTIL THE ENGINEER DIRECTS THAT IT BE REMOVED. THE CONTRACTOR SHALL REMOVE AND DISPOSE OF SILT ACCUMULATIONS AT BAGGED STONE WHEN SO DIRECTED BY THE ENGINEER. BAGS SHALL BE REMOVED AND REPLACED WHENEVER THE ENGINEER DETERMINES THAT THEY HAVE DETERIORATED AND LOST THEIR EFFECTIVENESS.

NO SEPARATE PAYMENT WILL BE MADE FOR THIS WORK AND THE ENTIRE COST OF THIS WORK SHALL BE INCLUDED IN THE UNIT CONTRACT PRICE BID FOR THE SEVERAL PAY ITEMS.

TEMPORARY DRAINAGE AT END BENT

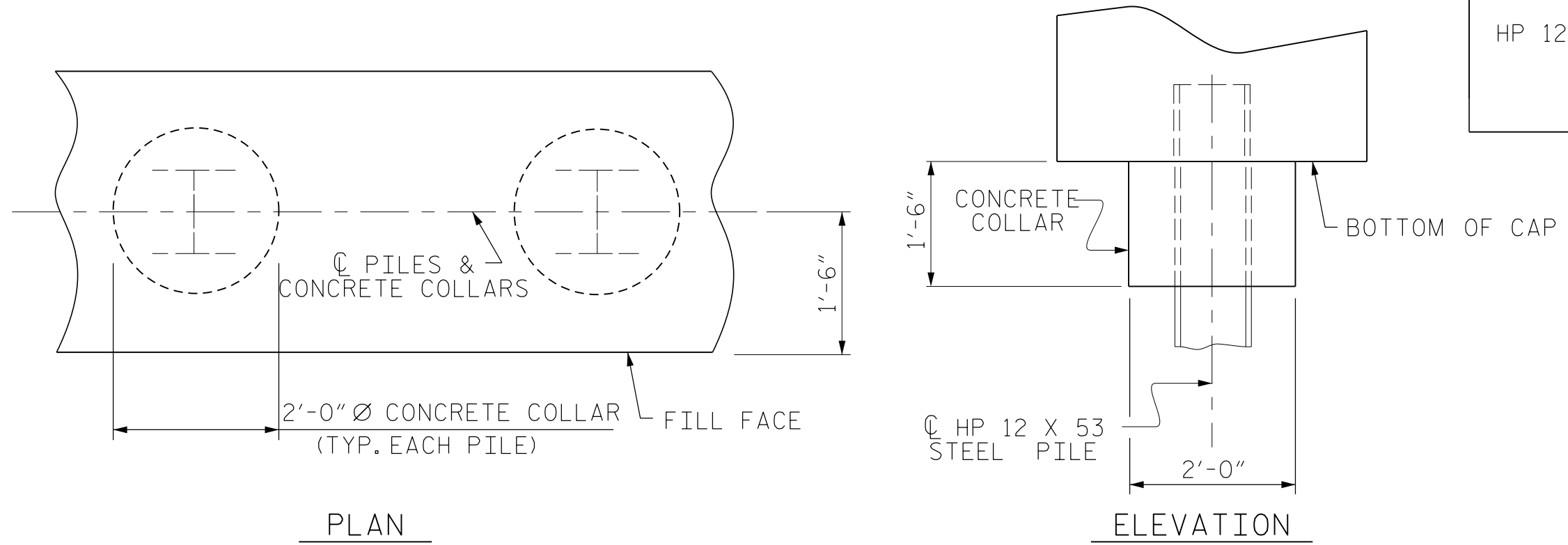
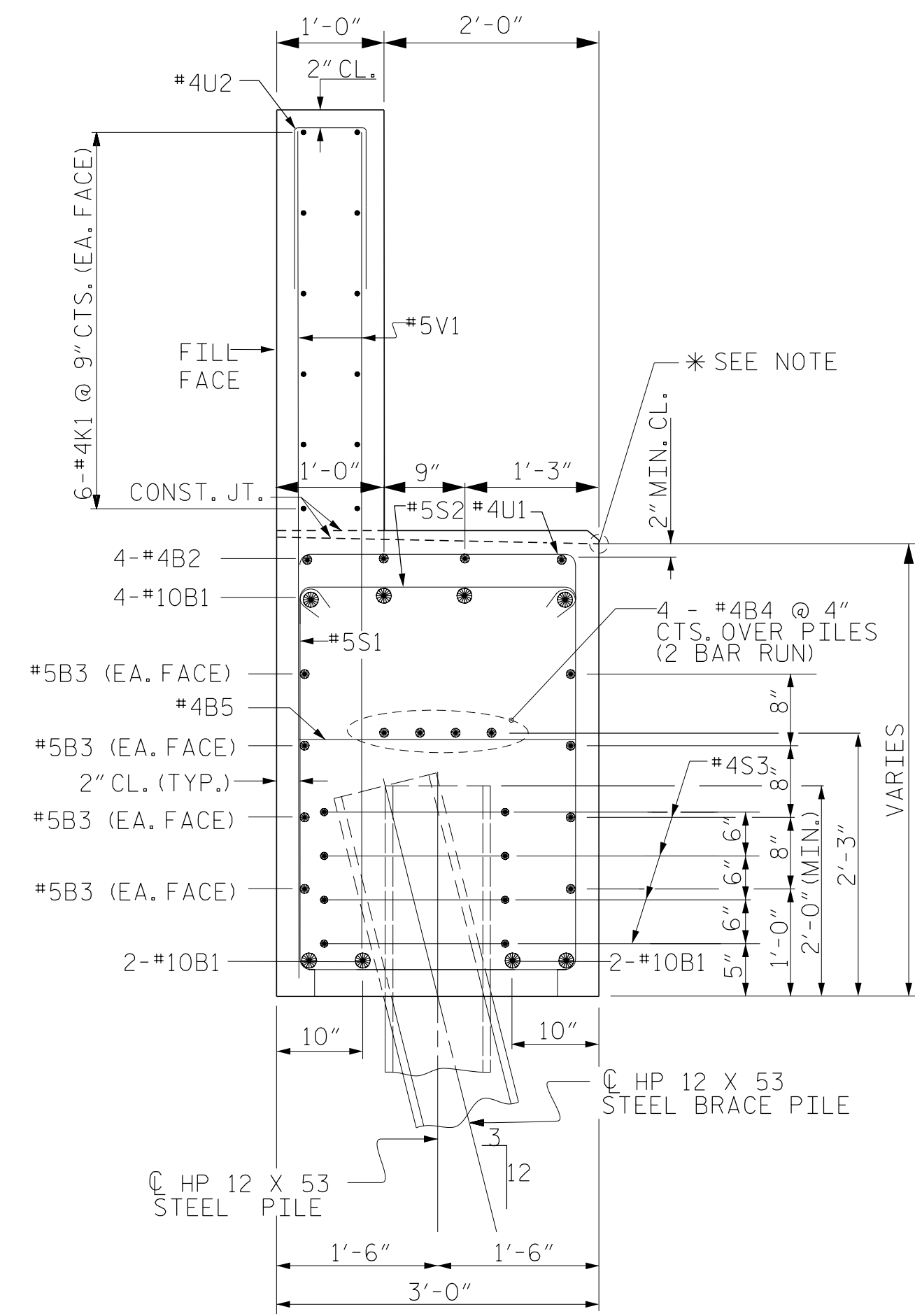
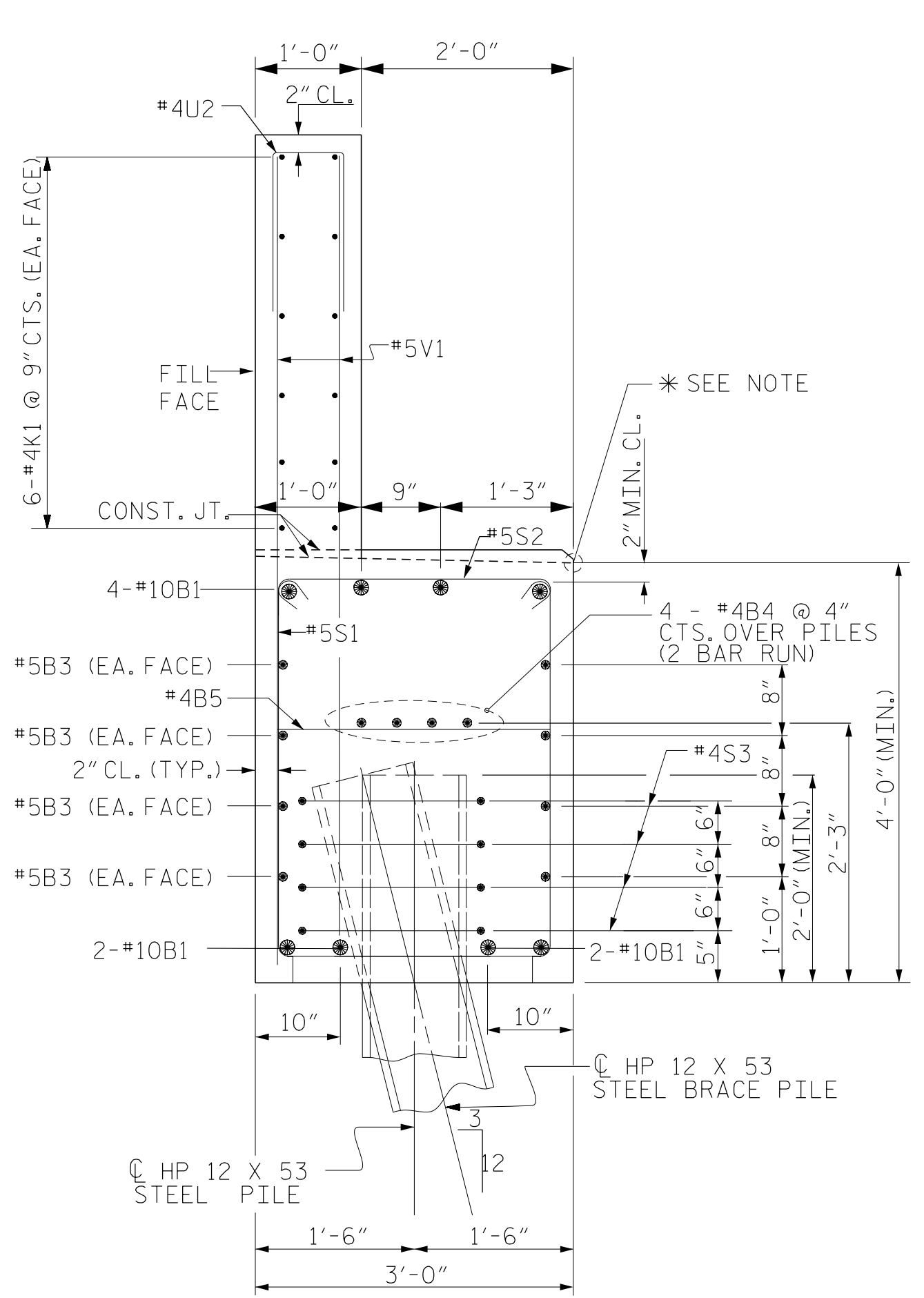


PILE SPLICE DETAILS



ALL BAR DIMENSIONS ARE OUT TO OUT.

BILL OF MATERIAL FOR END BENT NO. 1					
BAR NO.	SIZE	TYPE	LENGTH	WEIGHT	
B1	8	#10	1	51'-11"	1,787
B2	8	#4	STR	17'-5"	93
B3	8	#5	STR	49'-2"	410
B4	8	#4	STR	25'-10"	138
B5	13	#4	STR	2'-8"	23
H1	38	#5	2	14'-2"	561
H2	2	#5	2	8'-6"	18
H3	40	#5	3	14'-2"	591
H4	2	#5	3	8'-11"	19
K1	24	#4	STR	25'-10"	414
K2	8	#4	STR	3'-7"	19
S1	60	#5	4	10'-10"	678
S2	60	#5	5	3'-7"	224
S3	32	#4	6	6'-6"	139
U1	22	#4	7	5'-8"	83
U2	42	#4	7	3'-8"	103
V1	84	#5	STR	7'-11"	694
V2	8	#5	STR	8'-8"	72
V3	8	#5	STR	9'-0"	75
V4	8	#5	STR	9'-4"	78
V5	13	#5	STR	9'-8"	131
V6	8	#5	STR	9'-0"	75
V7	8	#5	STR	9'-4"	78
V8	8	#5	STR	9'-8"	81
V9	13	#5	STR	10'-0"	136
REINFORCING STEEL (FOR END BENT NO. 1)				6,720	LBS.
CLASS A CONCRETE BREAKDOWN					
POUR #1 CAP & LOWER PART OF WINGS				29.1	C.Y.
POUR #2 BACKWALL & UPPER PART OF WINGS				14.7	C.Y.
TOTAL CLASS A CONCRETE				43.8	C.Y.
HP 12 X 53 STEEL PILES NO: 8				200	LIN. FT.



PROJECT NO. R-2707C

CLEVELAND COUNTY

STATION: 20+70.23-Y3- POT

SHEET 3 OF 3



DocuSigned by: Jeff Capus 2/6/2017

Firm License No. C-1051
421 Fayetteville St., Suite 400
Raleigh, NC 27601
T 919.380.8750
www.stewartinc.com

STEWART

STATE OF NORTH CAROLINA DEPARTMENT OF TRANSPORTATION					
SUBSTRUCTURE END BENT NO.1 DETAILS					
REVISIONS					
NO.	BY:	DATE:	NO.	BY:	DATE:
1			3		
2			4		

SHEET NO. S4-21

TOTAL SHEETS 29

NOTES:

THE TOP SURFACE OF THE CAP EXCEPT THE BRIDGE SEAT BUILDUPS SHALL BE SLOPED TRANSVERSELY FROM THE FILL FACE TO THE BACK FACE AT THE RATE OF 2%.

* ELEVATIONS BETWEEN BRIDGE SEAT BUILDUPS ARE SHOWN AT THIS POINT.

DRAWN BY: H.ASSFOURA	DATE: 08/16
CHECKED BY: J.L.OFTUS	DATE: 11/16
DESIGN ENGINEER OF RECORD: J.L.OFTUS	DATE: 01/17

R 2707C-SITE 3

2/6/2017

\\404_041_R2707C_SMU_1EB3_S4-21.dgn

USER: jloftus