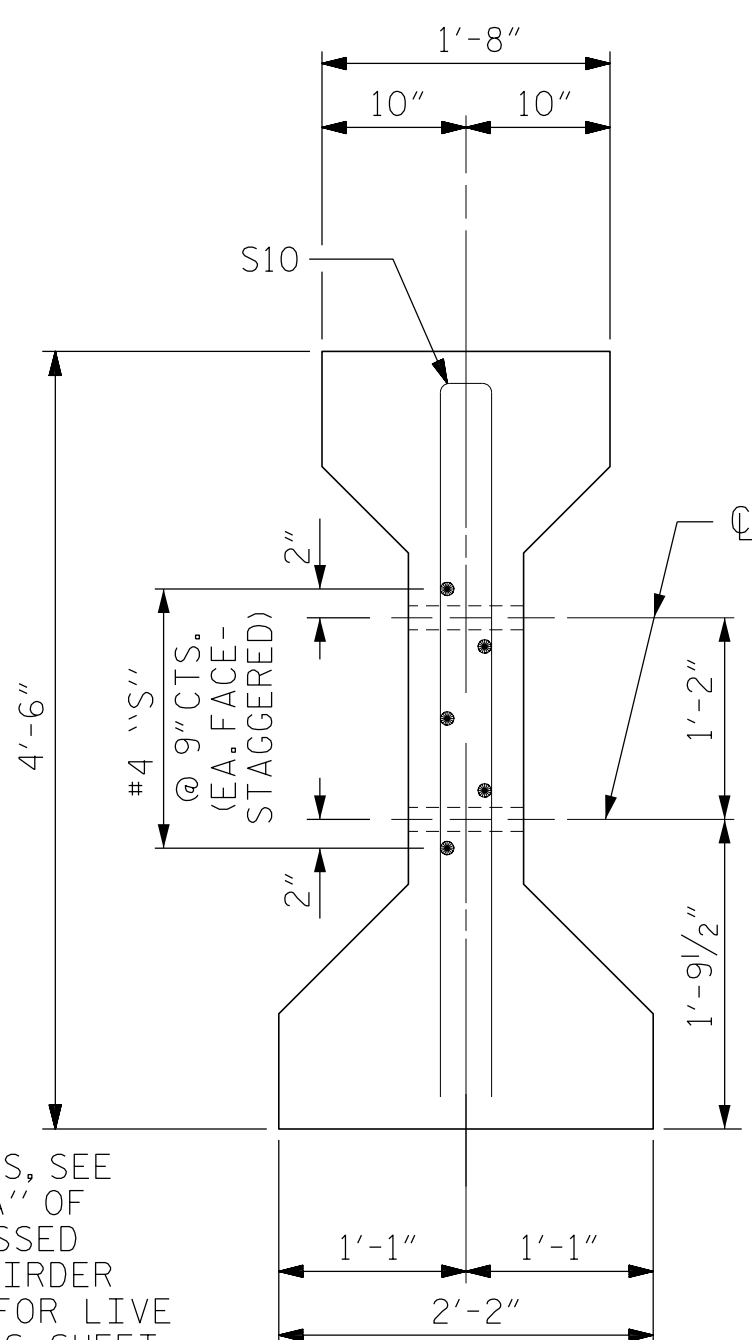
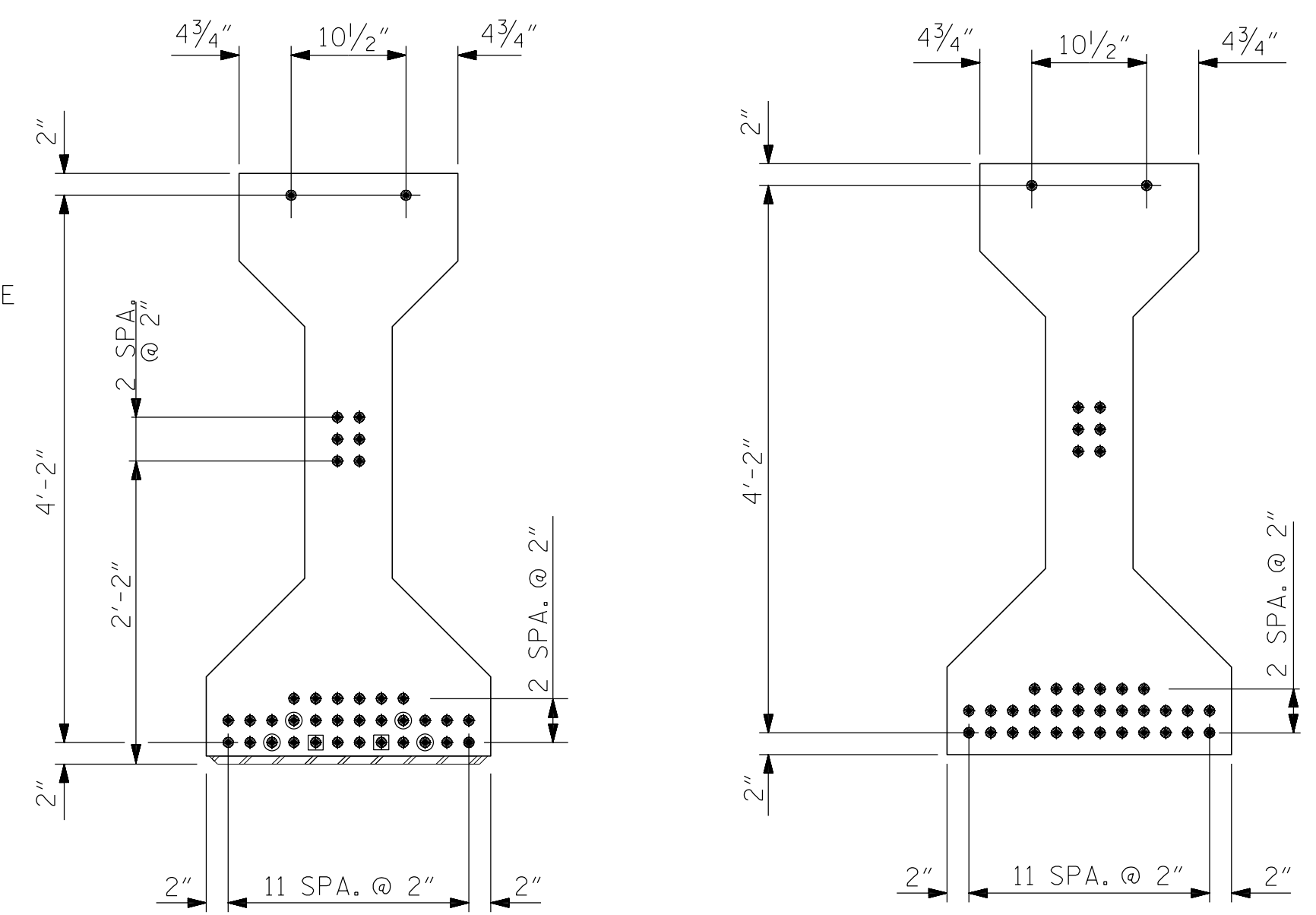


SECTION A-A

SECTION B-B



SECTION C-C
(S1 BARS NOT SHOWN)

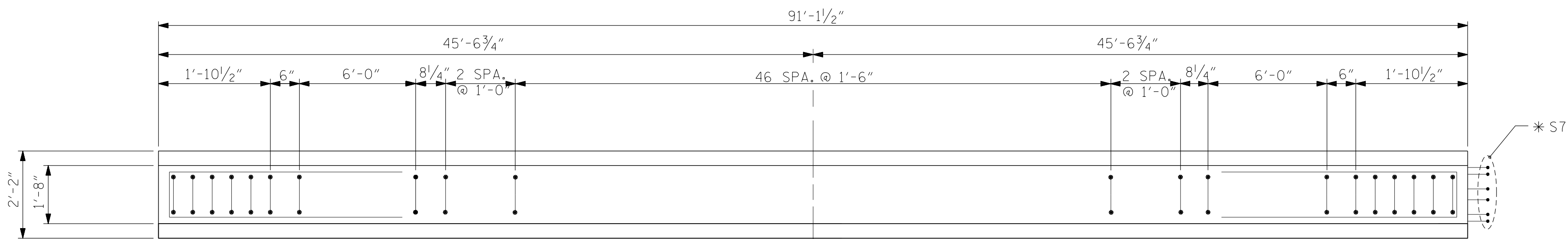


AT END OF GIRDER

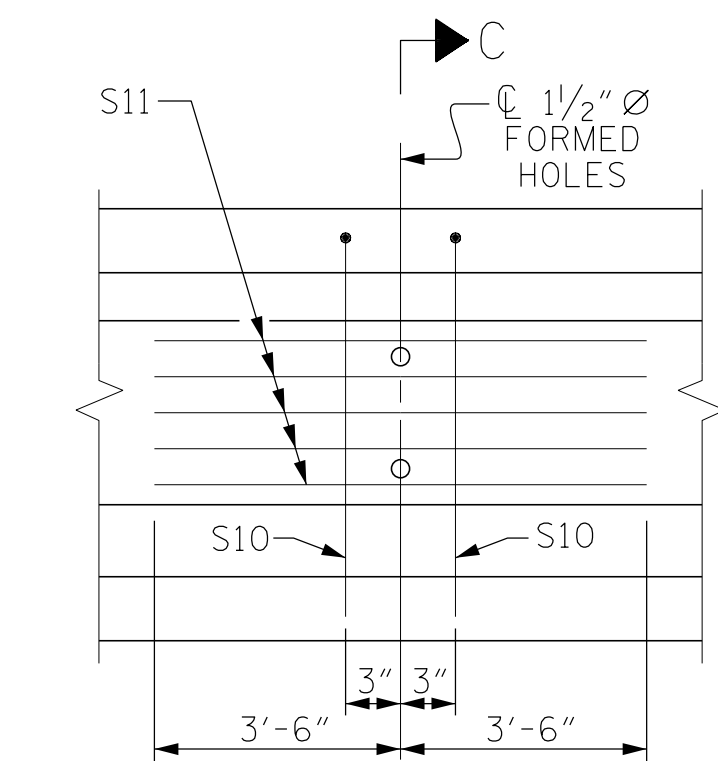
AT C OF GIRDER

0.6" Ø LOW RELAXATION STRAND LAYOUT

- FULLY BONDED STRANDS
- STRANDS DEBONDED FOR 8'-0" FROM END OF GIRDER
- STRANDS DEBONDED FOR 4'-0" FROM END OF GIRDER

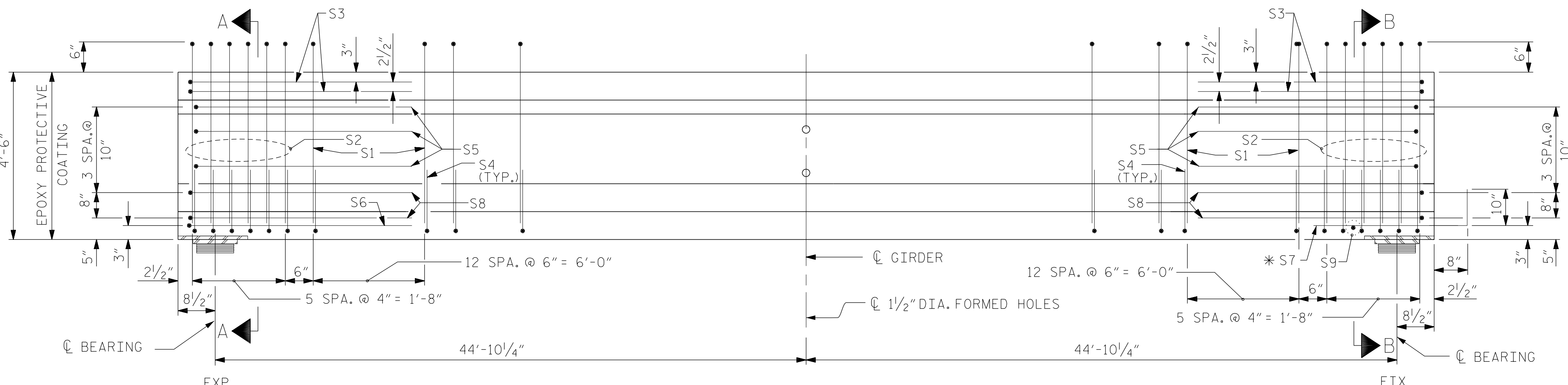


PLAN OF GIRDER



PARTIAL ELEVATION

SHOWING INTERMEDIATE DIAPHRAGM REINFORCING STEEL FOR GIRDER Nos. 1 THRU 4



ELEVATION OF GIRDER

(SEE PARTIAL ELEVATION FOR ADDITIONAL "S" BARS)

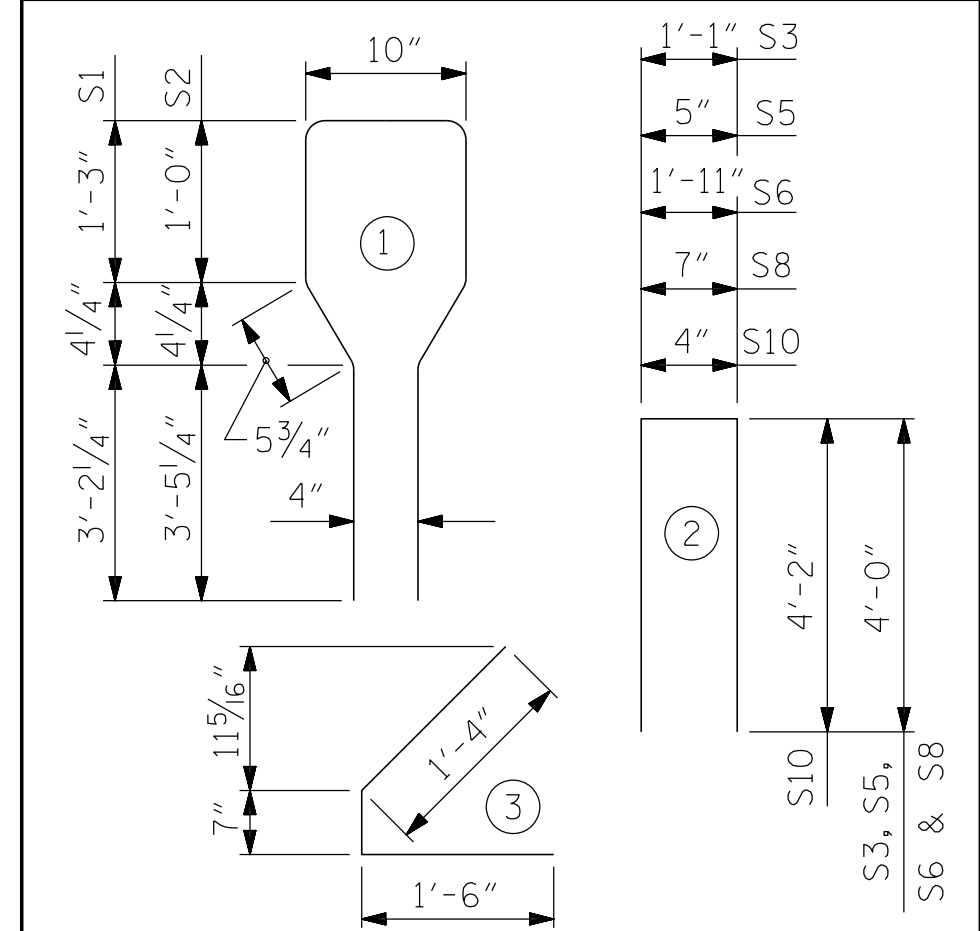
| 0.6" Ø L. R. GRADE 270 STRANDS | | |
|--------------------------------|--|--|
| AREA (SQUARE INCHES) | ULTIMATE STRENGTH (LBS. PER STRAND) | APPLIED PRESTRESS (LBS. PER STRAND) |
| 0.217 | 58,600 | 43,950 |

| REINFORCING STEEL FOR ONE GIRDER | | | | | |
|----------------------------------|--------|------|------|--------|--------|
| BAR | NUMBER | SIZE | TYPE | LENGTH | WEIGHT |
| S1 | 77 | #5 | 1 | 10'-8" | 857 |
| S2 | 12 | #6 | 1 | 10'-8" | 192 |
| S3 | 4 | #4 | 2 | 9'-1" | 24 |
| S4 | 88 | #4 | 3 | 3'-5" | 201 |
| S5 | 6 | #4 | 2 | 8'-5" | 34 |
| S6 | 1 | #4 | 2 | 9'-11" | 7 |
| * S7 | 6 | #5 | STR | 3'-8" | 23 |
| S8 | 4 | #4 | 2 | 8'-7" | 23 |
| S9 | 1 | #3 | STR | 1'-10" | 1 |
| S10 | 2 | #5 | 2 | 8'-8" | 18 |
| S11 | 5 | #4 | STR | 7'-0" | 24 |

* NOTE: S7 BARS SHALL BE BENT BEFORE SHIPMENT. HEAT BENDING SHALL NOT BE ALLOWED.

BAR TYPES

ALL BAR DIMENSIONS ARE OUT-TO-OUT



QUANTITIES FOR ONE GIRDER

| | REINFORCING STEEL | 8,000 PSI CONCRETE | 0.6" Ø L. R. STRANDS |
|-----------------|-------------------|--------------------|----------------------|
| | LB. | C.Y. | No. |
| EXTERIOR GIRDER | 1404 | 18.5 | 38 |
| INTERIOR GIRDER | 1404 | 18.5 | 38 |

GIRDERS REQUIRED

| NUMBER | LENGTH | TOTAL LENGTH |
|--------|------------|--------------|
| 4 | 91'-1 1/2" | 364'-6" |

PROJECT NO. R-2707C
CLEVELAND COUNTY
STATION: 20+70.23-Y3- POT

SHEET 1 OF 3

STATE OF NORTH CAROLINA
DEPARTMENT OF TRANSPORTATION
RALEIGH
STANDARD
AASHTO TYPE IV
PRESTRESSED CONCRETE GIRDER
CONTINUOUS FOR LIVE LOAD
SPAN A



DocuSigned by:
Jeff Capus
2/6/2017

Firm License No. C-1051
421 Fayetteville St.,
Suite 400
Raleigh, NC 27601
T 919.380.8750
www.stewartinc.com

| REVISIONS | | | | | | SHEET NO. S4-10 |
|-----------|-----|-------|-----|-----|-------|--------------------|
| NO. | BY: | DATE: | NO. | BY: | DATE: | |
| 1 | | | 3 | | | TOTAL SHEETS 29 |
| 2 | | | 4 | | | |

STR. #4
STD. NO. PCG6

| | |
|-------------------------------------|-------------|
| DRAWN BY: H.ASSFOURA | DATE: 07/16 |
| CHECKED BY: J.LOFIUS | DATE: 11/16 |
| DESIGN ENGINEER OF RECORD: J.LOFIUS | DATE: 01/17 |

R 2707C-SITE 3
 2/6/2017
 \\404-019-R2707C-SMU-PCG1-S4-10.dgn
 USER:dfault