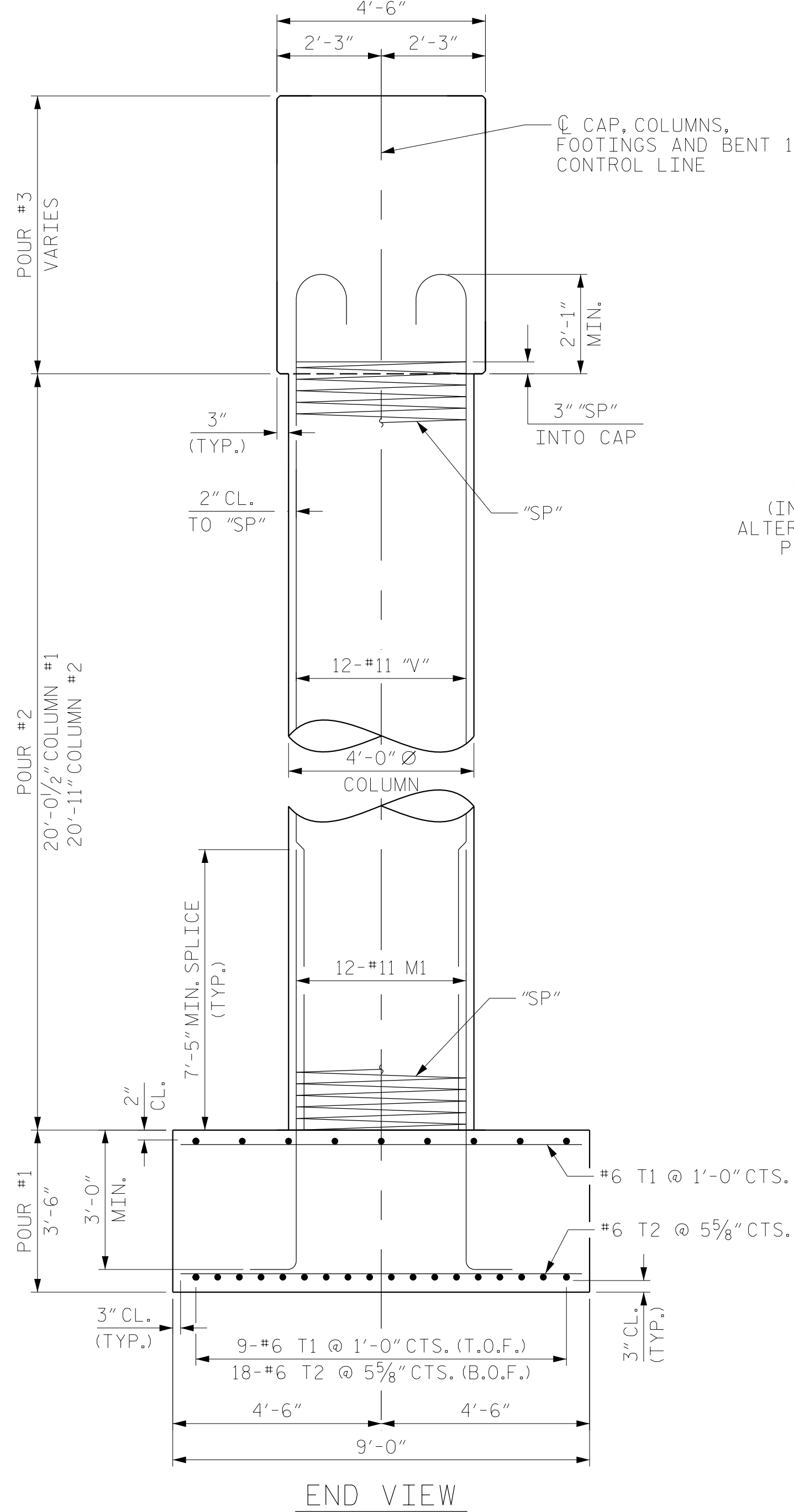
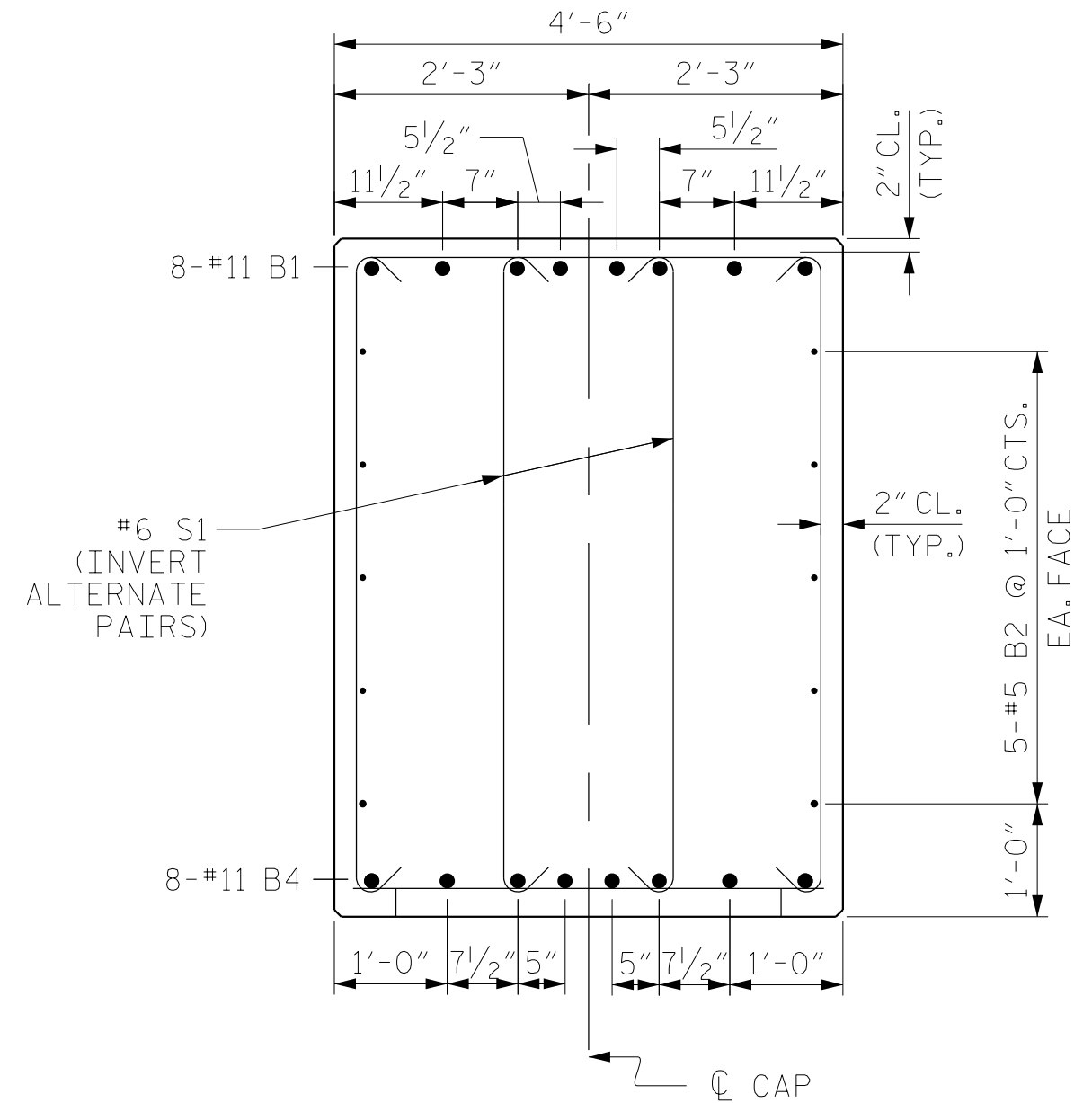


**PLAN OF FOOTINGS**

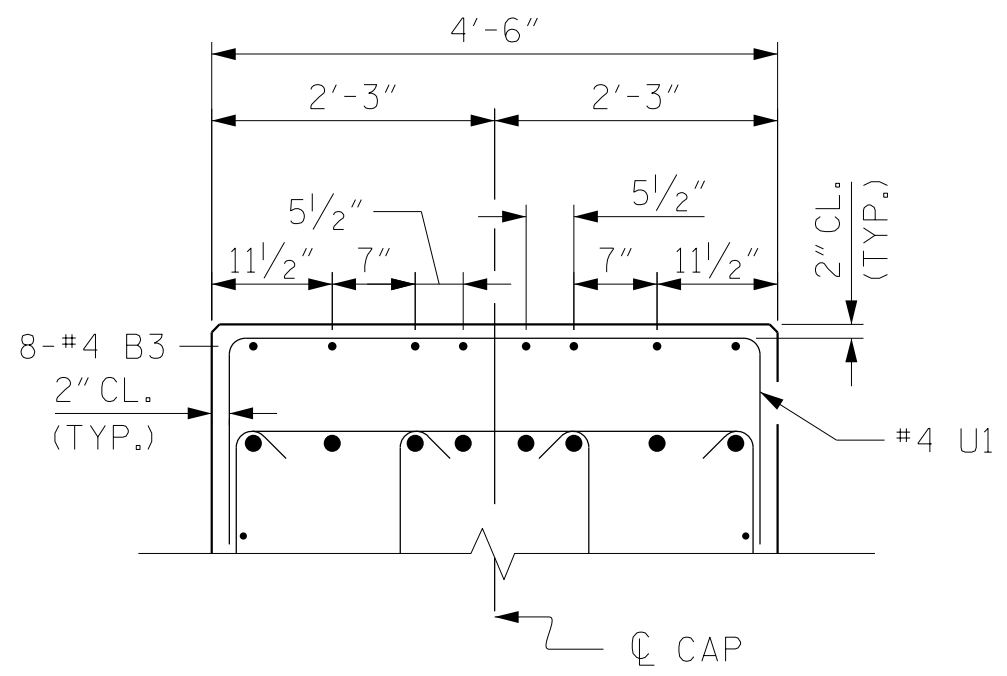
ALL DIMENSIONS AND REINFORCING STEEL ARE TYPICAL FOR EACH FOOTING



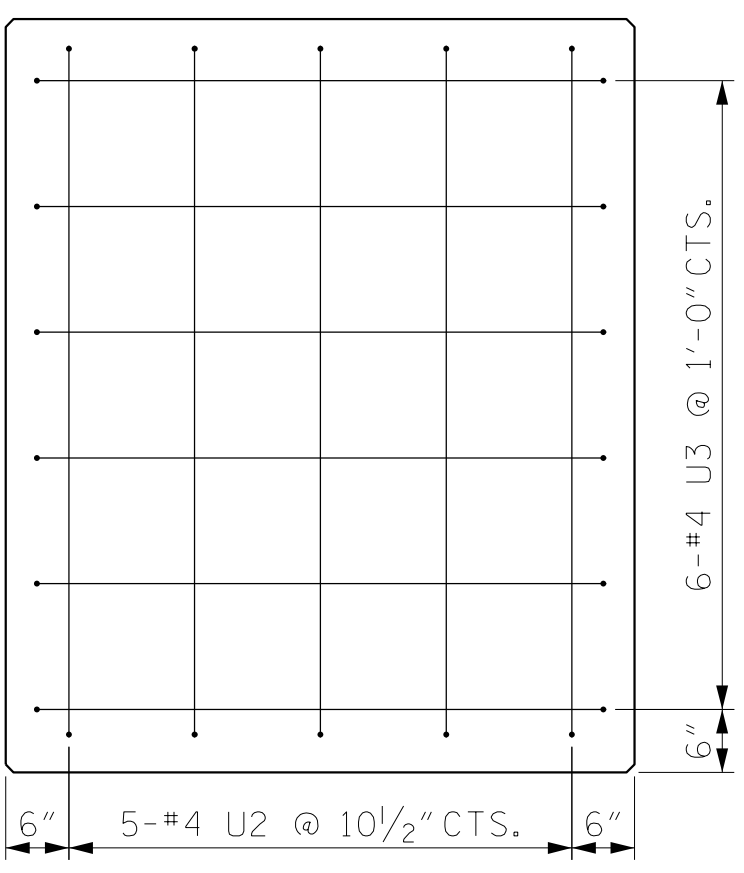
**END VIEW**



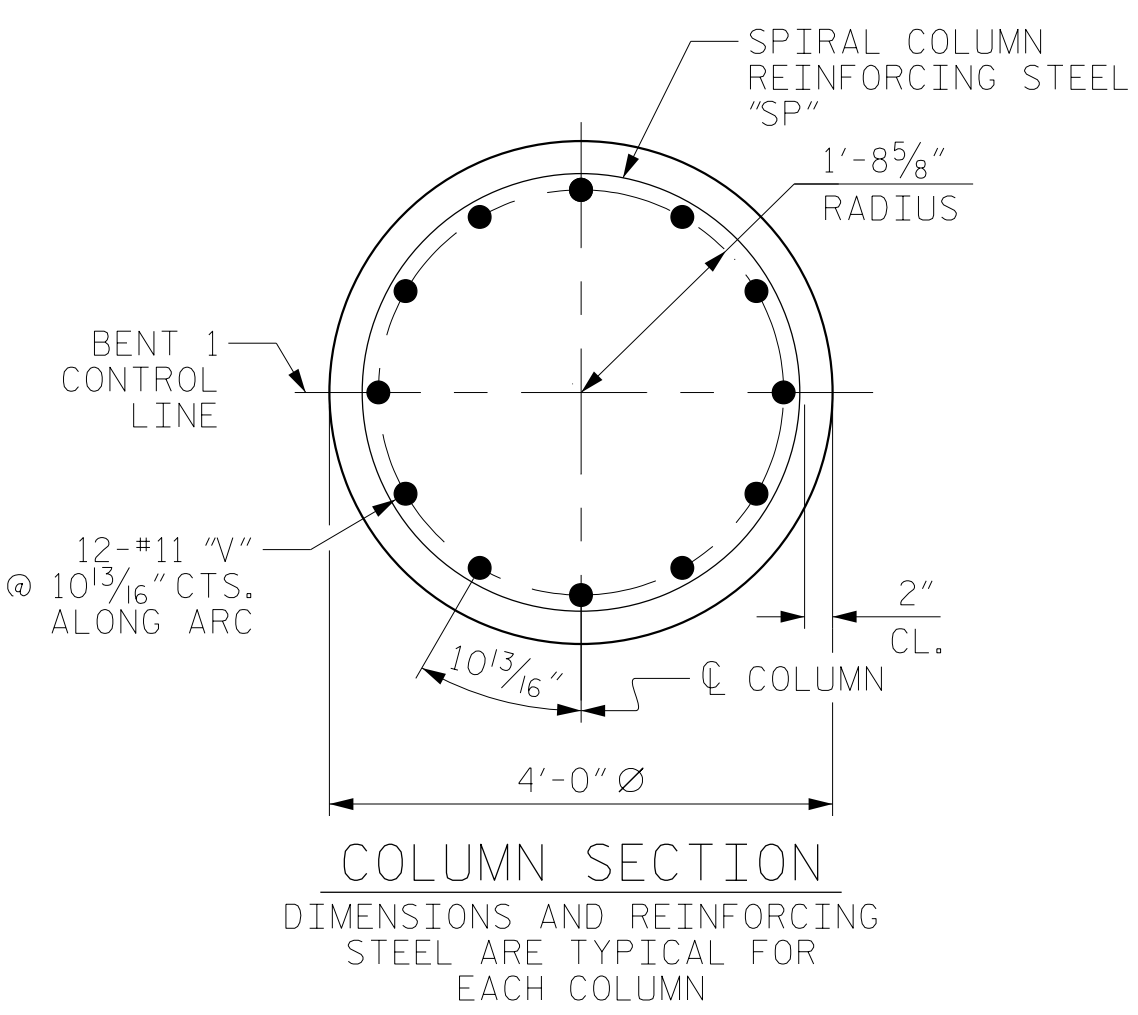
**SECTION A-A**



**SECTION B-B**

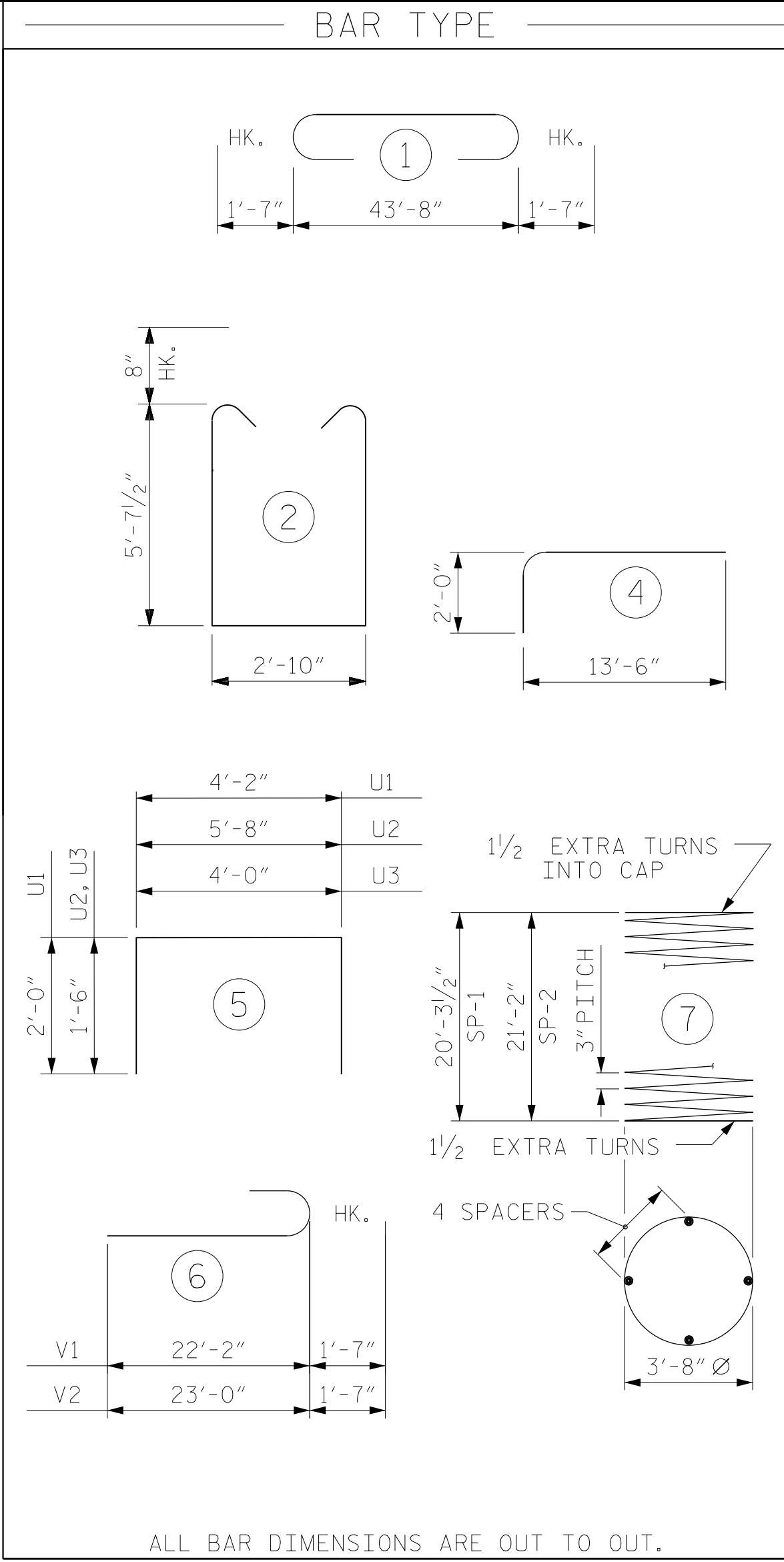


**VIEW C-C**



**COLUMN SECTION**

DIMENSIONS AND REINFORCING STEEL ARE TYPICAL FOR EACH COLUMN



ALL BAR DIMENSIONS ARE OUT TO OUT.

**BILL OF MATERIAL**

**FOR BENT 1**

BAR	NO.	SIZE	TYPE	LENGTH	WEIGHT
B1	8	#11		46'-10"	1991
B2	10	#5	STR	43'-8"	455
B3	40	#4	STR	5'-0"	134
B4	8	#11	STR	43'-8"	1856
M1	24	#11		15'-6"	1976
S1	94	#6		15'-5"	2177
T1	36	#6	STR	8'-6"	460
T2	72	#6	STR	8'-6"	919
U1	45	#4		8'-2"	245
U2	10	#4		8'-8"	58
U3	12	#4		7'-0"	56
V1	12	#11		23'-9"	1514
V2	12	#11		24'-7"	1567

REINFORCING STEEL 13,408 LBS.

SP-1	4	*	7	958'-9"	640
SP-2	4	*	7	998'-8"	667

SPIRAL COLUMN REINFORCING STEEL (FOR BENT 1) 1307 LBS.

\* THE "SP" SPIRAL REINFORCING STEEL SHALL BE W20 OR D-20 COLD DRAWN WIRE OR #4 PLAIN OR DEFORMED BAR

**CLASS A CONCRETE BREAKDOWN (FOR BENT 1)**

POUR #1 (FOOTINGS)	21.0 C.Y.
POUR #2 (COLUMNS)	19.1 C.Y.
POUR #3 (CAP)	45.4 C.Y.
TOTAL CLASS A CONCRETE	85.5 C.Y.

FOUNDATION EXCAVATION LUMP SUM FOR BENT

PROJECT NO. R-2707C  
CLEVELAND COUNTY  
 STATION: 29+07.16 -Y2-

SHEET 2 OF 2



STATE OF NORTH CAROLINA  
 DEPARTMENT OF TRANSPORTATION  
 RALEIGH

SUBSTRUCTURE

BENT NO. 1  
 DETAILS

REVISIONS						SHEET NO.
NO.	BY:	DATE:	NO.	BY:	DATE:	
1			3			S3-30
2			4			TOTAL SHEETS 36

DRAWN BY : MAL, MKO DATE : 12/2016  
 CHECKED BY : JMR DATE : 12/2016  
 DESIGN ENGINEER OF RECORD: MKO DATE : 12/2016

DOCUMENT NOT CONSIDERED FINAL UNLESS ALL SIGNATURES COMPLETED