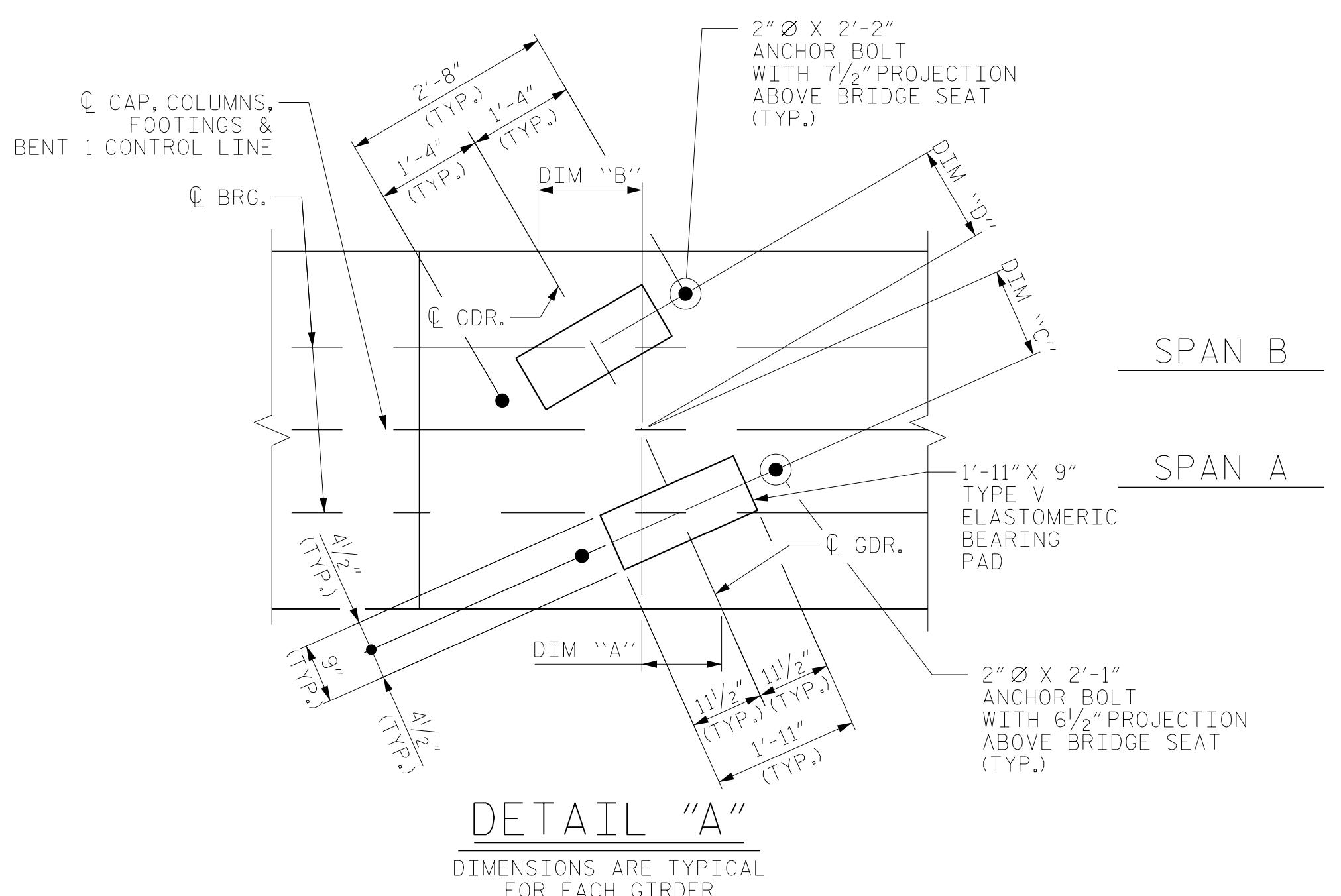


NOTES:
 FOR SECTION A-A AND SECTION B-B, SEE SHEET 2 OF 2.
 FOR REINFORCING BILL OF MATERIAL, SEE SHEET 2 OF 2.
 STIRRUPS AND "U" BARS IN CAP MAY BE SHIFTED AS NECESSARY TO CLEAR ANCHOR BOLTS.
 HOOKS ON "V" BARS MAY BE TURNED AS NECESSARY FOR PLACING REINFORCING STEEL.
 ★ INVERT ALTERNATE PAIRS OF #6 S1 STIRRUPS.



SPAN A			SPAN B		
GIRDER	DIM "A"	DIM "C"	GIRDER	DIM "B"	DIM "D"
A1	1'-0 7/16"	1'-1 3/4"	B1	1'-4 5/8"	1'-2 5/8"
A2	1'-0 5/16"	1'-1 3/4"	B2	1'-4 1/8"	1'-2 3/8"
A3	1'-0 3/16"	1'-1 1/16"	B3	1'-3 5/8"	1'-2 1/2"
A4	1'-0"	1'-1 1/16"	B4	1'-3 3/4"	1'-2 1/2"
A5	11 7/8"	1'-1 1/16"	B5	1'-3 3/8"	1'-2 7/8"

PROJECT NO. R-2707C
CLEVELAND COUNTY
 STATION: 29+07.16 -Y2-

SHEET 1 OF 2



STATE OF NORTH CAROLINA
 DEPARTMENT OF TRANSPORTATION
 RALEIGH

SUBSTRUCTURE
 BENT NO. 1

REVISIONS						SHEET NO.
NO.	BY:	DATE:	NO.	BY:	DATE:	S3-29
1			3			TOTAL SHEETS
2			4			36

DRAWN BY : MAL, MKO DATE : 12/2016
 CHECKED BY : JMR DATE : 12/2016
 DESIGN ENGINEER OF RECORD: MKO DATE : 12/2016

DOCUMENT NOT CONSIDERED
 FINAL UNLESS ALL
 SIGNATURES COMPLETED