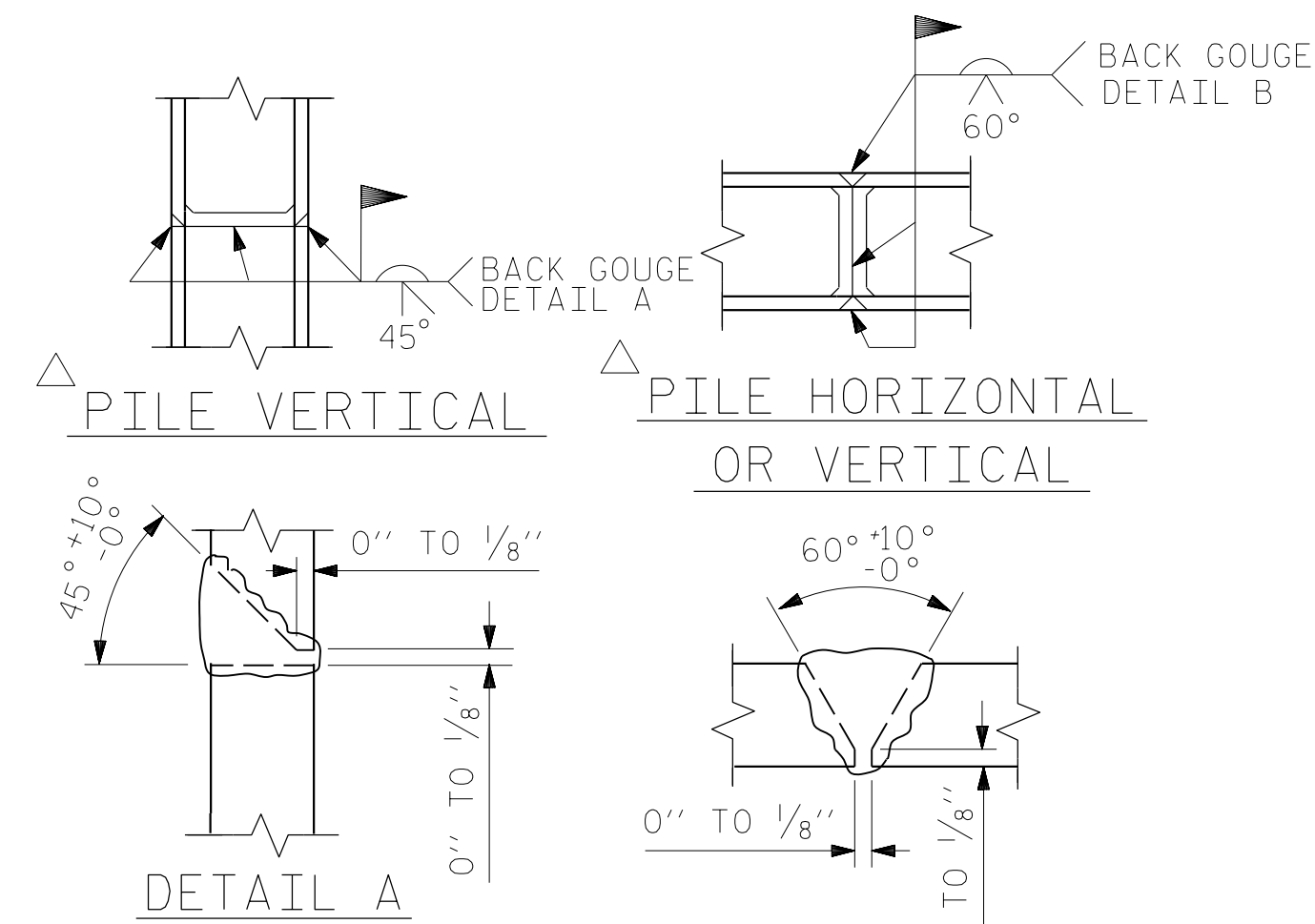
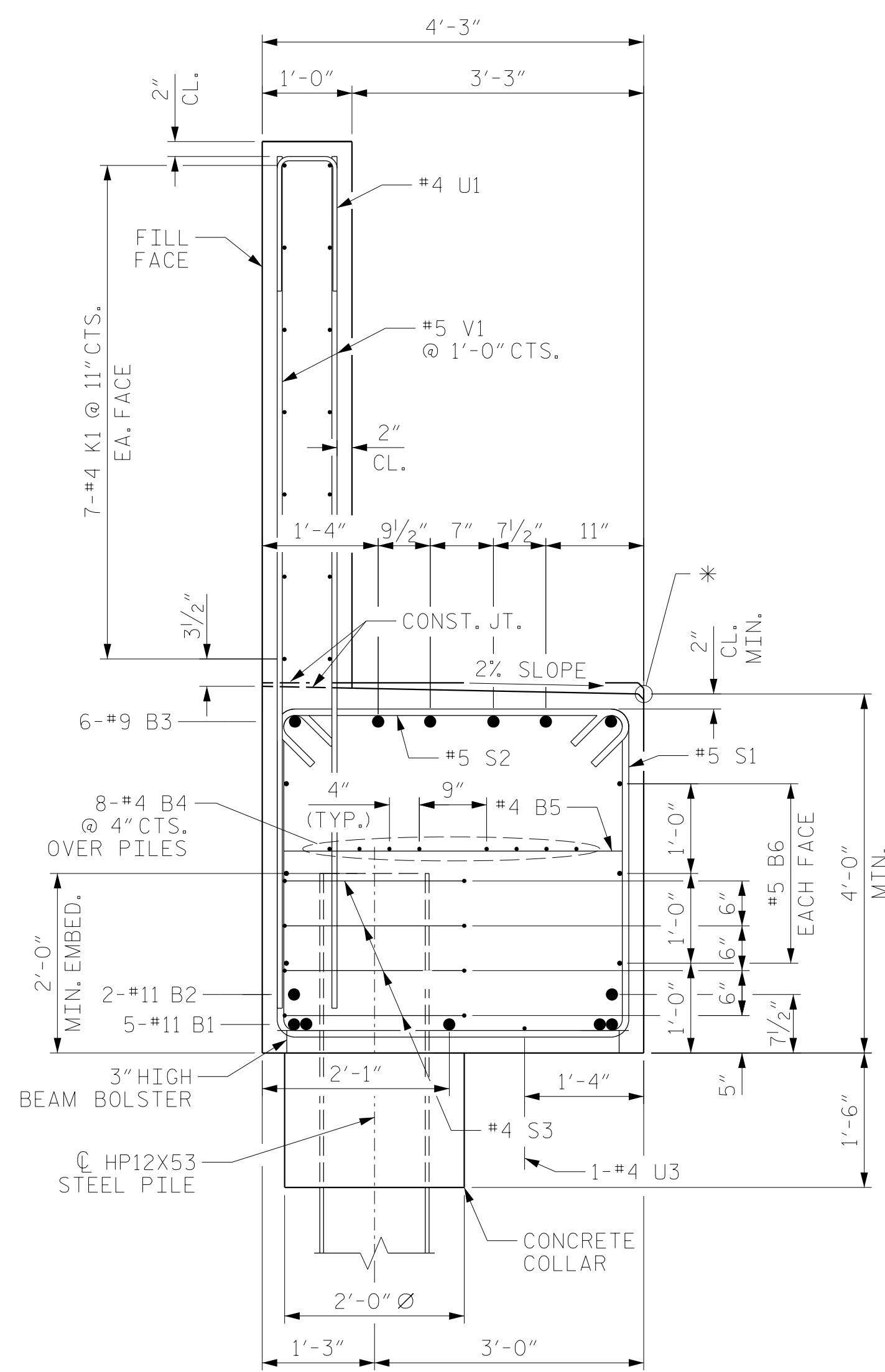


BAGGED STONE AND PIPE SHALL BE PLACED IMMEDIATELY AFTER COMPLETION OF END BENT EXCAVATION. PIPE MAY BE EITHER CONCRETE, CORRUGATED STEEL, CORRUGATED ALUMINUM ALLOY, OR CORRUGATED PLASTIC. PERFORATED PIPE WILL NOT BE ALLOWED.

BAGGED STONE SHALL REMAIN IN PLACE UNTIL THE ENGINEER DIRECTS THAT IT BE REMOVED. THE CONTRACTOR SHALL REMOVE AND DISPOSE OF SILT ACCUMULATIONS AT BAGGED STONE WHEN SO DIRECTED BY THE ENGINEER. BAGS SHALL BE REMOVED AND REPLACED WHENEVER THE ENGINEER DETERMINES THAT THEY HAVE DETERIORATED AND LOST THEIR EFFECTIVENESS.

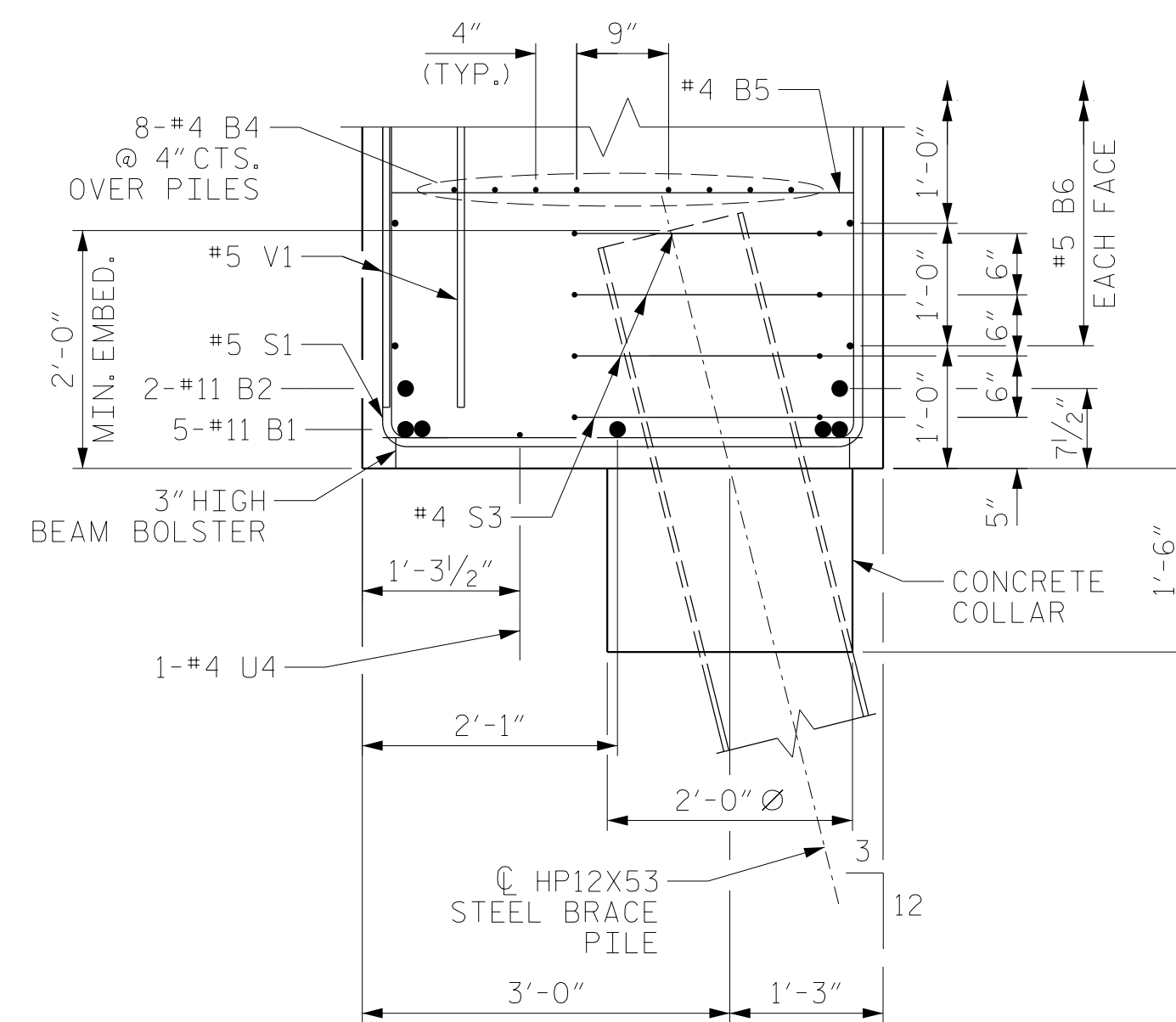
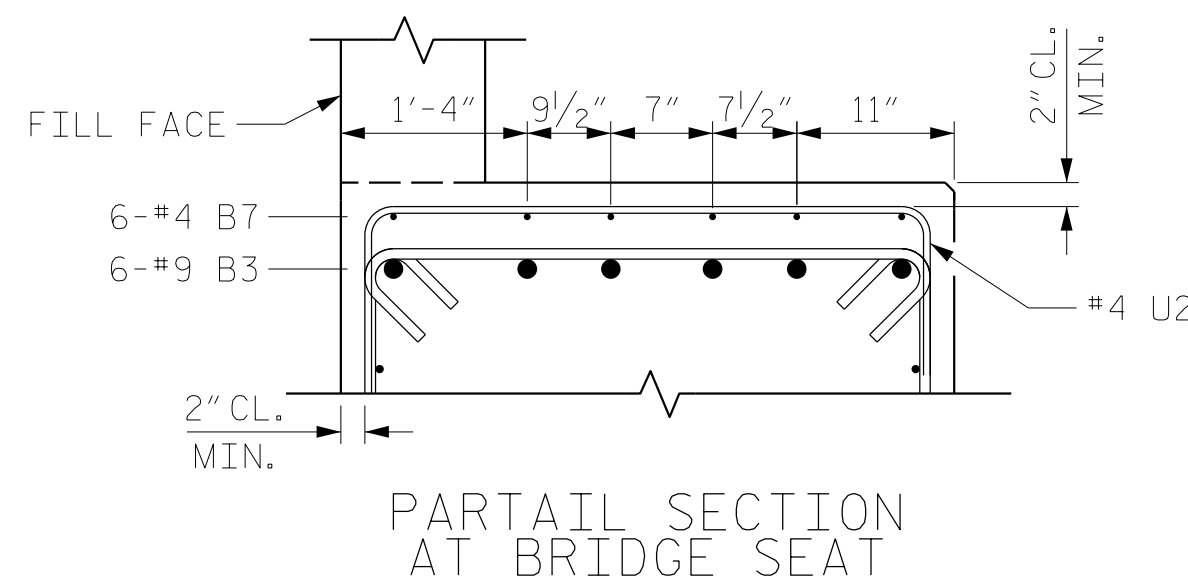
NO SEPARATE PAYMENT WILL BE MADE FOR THIS WORK AND THE ENTIRE COST OF THIS WORK SHALL BE INCLUDED IN THE UNIT CONTRACT PRICE BID FOR THE SEVERAL PAY ITEMS.

TEMPORARY DRAINAGE AT END BENT

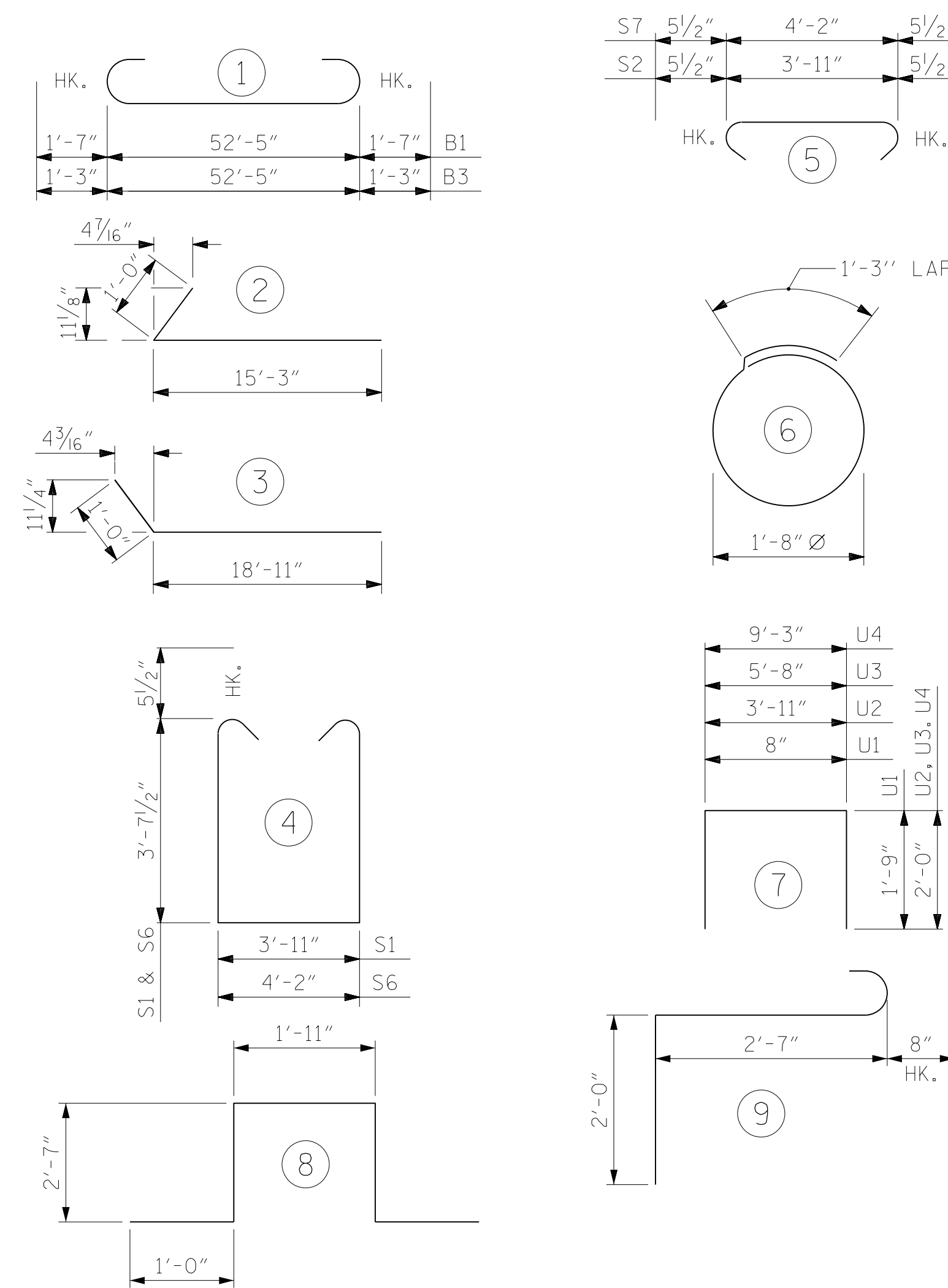


POSITION OF PILE DURING WELDING.

PILE SPLICING DETAILS



BAR TYPE



ALL BAR DIMENSIONS ARE OUT TO OUT.

BILL OF MATERIAL

END BENT #1					
BAR	NO.	SIZE	TYPE	LENGTH	WEIGHT
B1	5	#11	1	55'-7"	1477
B2	2	#11	STR	52'-5"	557
B3	6	#9	1	54'-11"	1120
B4	16	#4	STR	27'-5"	293
B5	13	#4	STR	3'-11"	34
B6	6	#5	STR	52'-5"	328
B7	30	#4	STR	3'-2"	63
H1	24	#4	2	16'-3"	261
H2	24	#4	3	19'-11"	319
K1	28	#4	STR	27'-5"	513
K2	4	#4	STR	3'-9"	10
K3	4	#4	STR	3'-9"	10
S1	84	#5	4	12'-1"	1059
S2	84	#5	5	4'-10"	423
S3	60	#4	6	6'-6"	261
S4	6	#6	9	5'-3"	47
S5	6	#6	8	9'-1"	82
S6	2	#5	4	12'-4"	26
S7	2	#5	5	5'-1"	11
U1	44	#4	7	4'-2"	122
U2	35	#4	7	7'-11"	185
U3	4	#4	7	9'-8"	26
U4	4	#4	7	13'-3"	35
V1	44	#5	STR	9'-6"	436
V2	42	#5	STR	11'-7"	507
V3	50	#5	STR	11'-4"	591

REINFORCING STEEL	8,796 LBS.
CLASS A CONCRETE BREAKDOWN	
POUR #1 CAP, LOWER PART OF WING & COLLARS	41.7 C.Y.
POUR #2 UPPER PART OF WING & BACKWALL	22.2 C.Y.
TOTAL CLASS A CONCRETE	63.9 C.Y.
HP 12 X 53 STEEL PILES	LIN. FT. = 510
NO: 17	
STEEL PILE POINTS	NO. = 17
PILE DRIVING EQUIPMENT SETUP	
HP 12 X 53	NO. = 17

PROJECT NO. R-2707C
CLEVELAND COUNTY
STATION: 29+07.16 -Y2-

SHEET 3 OF 3



STATE OF NORTH CAROLINA
DEPARTMENT OF TRANSPORTATION
RALEIGH
SUBSTRUCTURE
END BENT NO. 1

REVISIONS						SHEET NO.
NO.	BY:	DATE:	NO.	BY:	DATE:	S3-28
1			3			TOTAL SHEETS
2			4			36

DRAWN BY: MAL, MKO DATE: 12/2016
CHECKED BY: JMR DATE: 12/2016
DESIGN ENGINEER OF RECORD: MKO DATE: 12/2016

DOCUMENT NOT CONSIDERED FINAL UNLESS ALL SIGNATURES COMPLETED