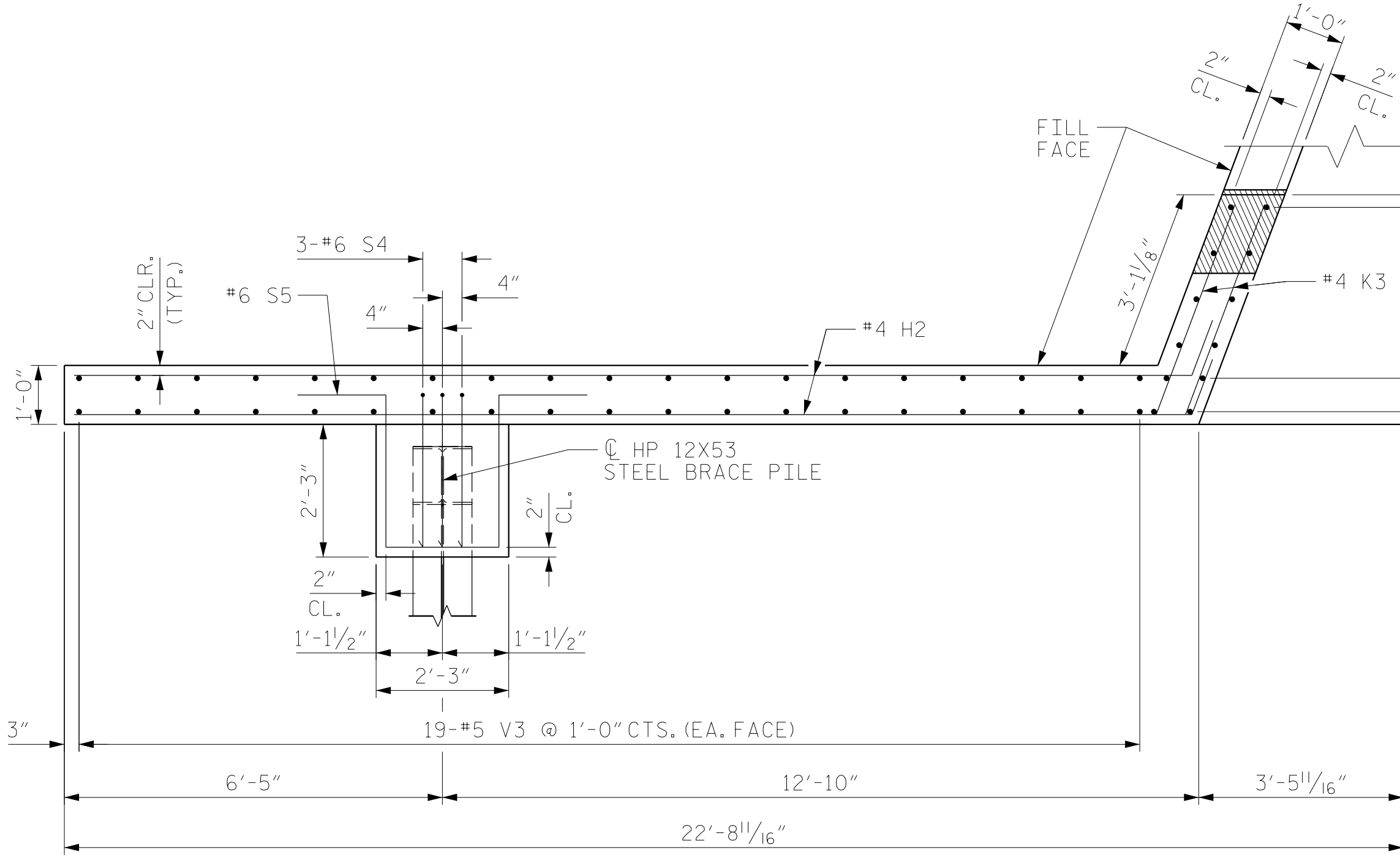
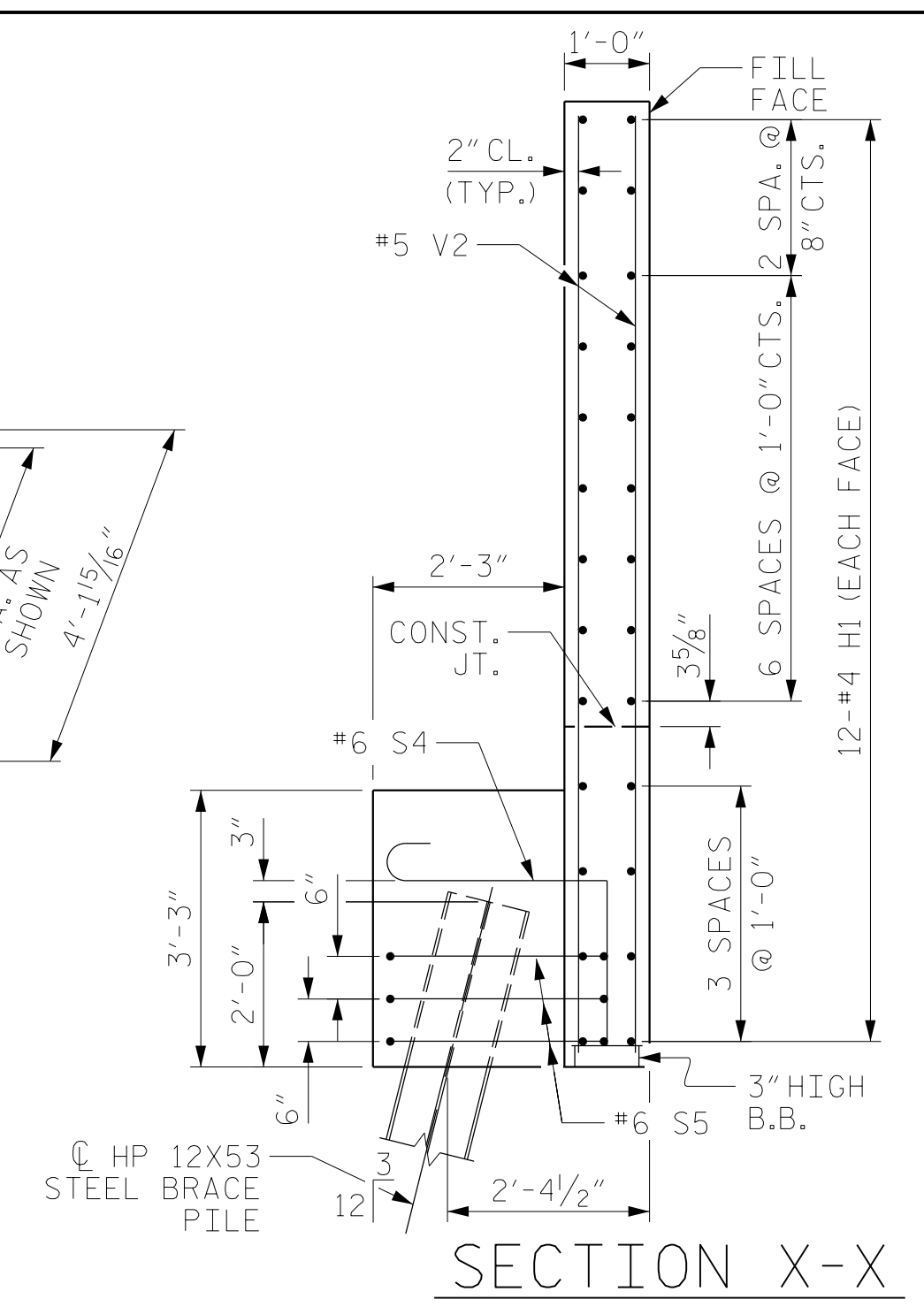


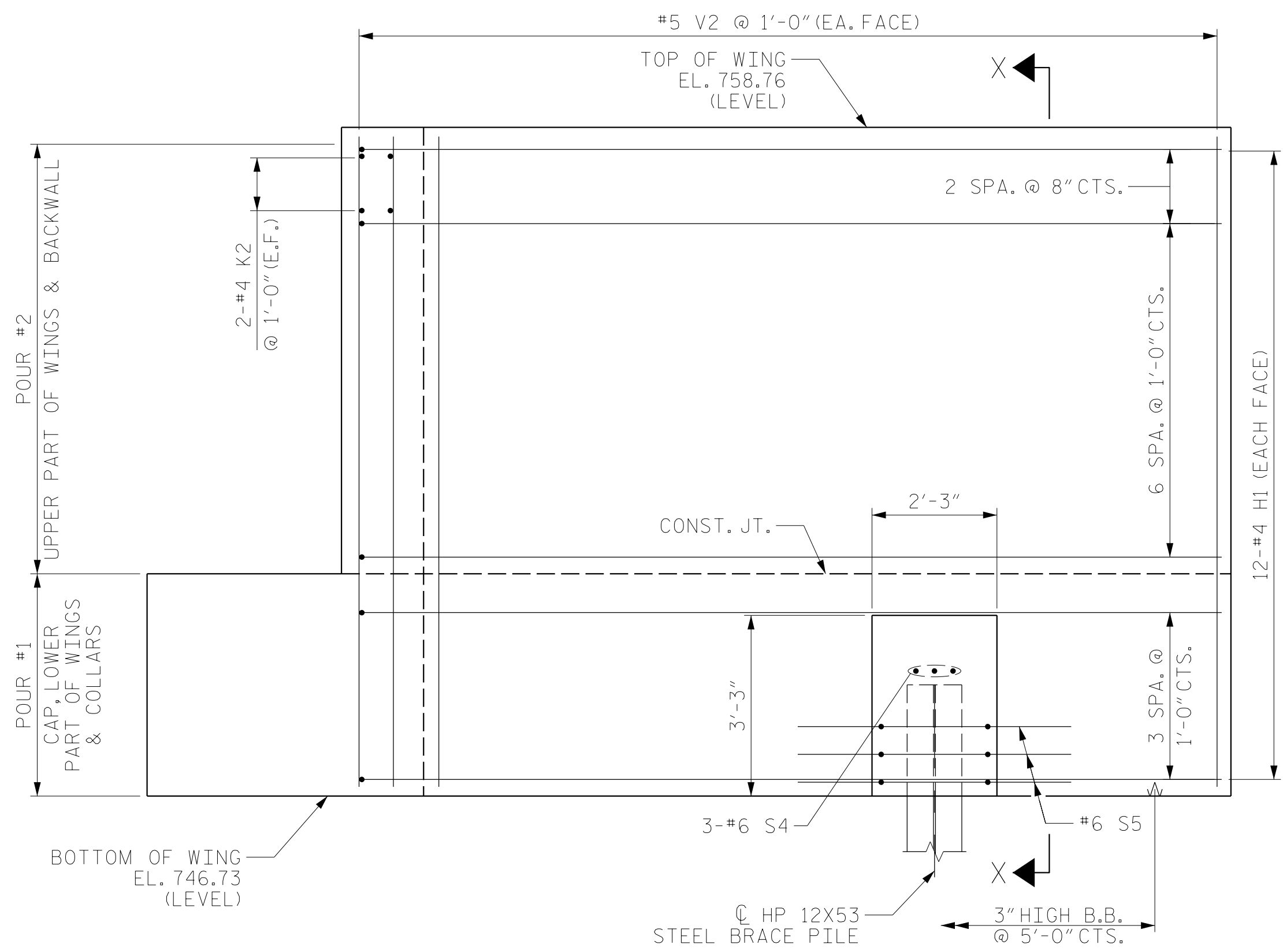
PLAN OF LEFT WING W1



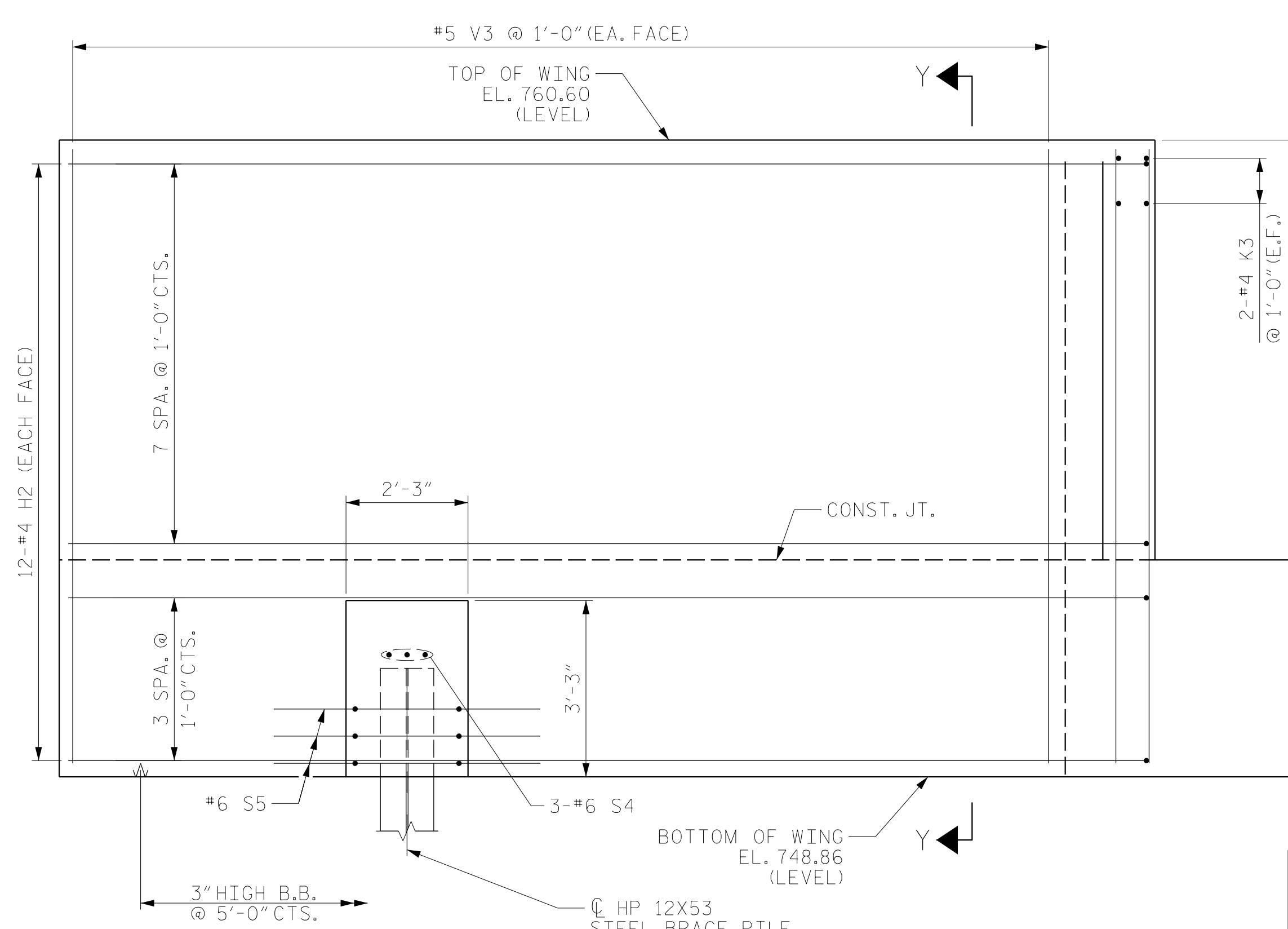
PLAN OF RIGHT WING W2



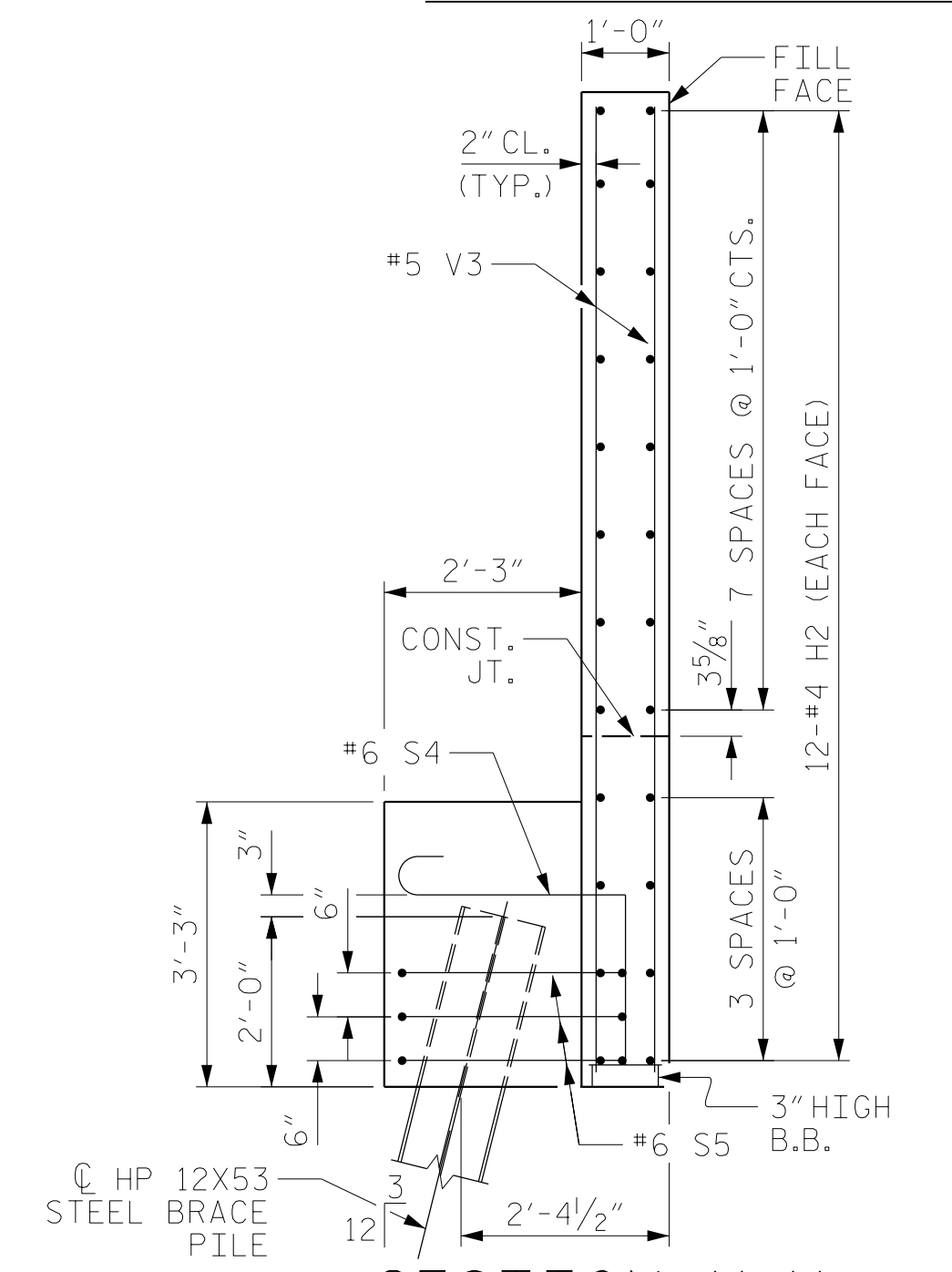
SECTION X-X



ELEVATION OF LEFT WING W1



ELEVATION OF RIGHT WING W2



SECTION Y-Y

PROJECT NO. R-2707C  
 CLEVELAND COUNTY  
 STATION: 29+07.16 -Y2-

SHEET 2 OF 3

Professional Engineer seal for RS&H Architects-Engineers-Planners, Inc. The seal includes the text: "STATE OF NORTH CAROLINA PROFESSIONAL ENGINEER JUSTIN B. ROBINSON LICENSE NO. 35086 EXPIRES 12/31/2017".

STATE OF NORTH CAROLINA DEPARTMENT OF TRANSPORTATION RALEIGH					
SUBSTRUCTURE					
END BENT NO. 1					
REVISIONS					
NO.	BY:	DATE:	NO.	BY:	DATE:
1			3		
2			4		
SHEET NO.					S3-27
TOTAL SHEETS					36

DRAWN BY : MAL, MKO DATE : 12/2016  
 CHECKED BY : JMR DATE : 12/2016  
 DESIGN ENGINEER OF RECORD: MKO DATE : 12/2016

DOCUMENT NOT CONSIDERED  
 FINAL UNLESS ALL  
 SIGNATURES COMPLETED