

NOTES

STIRRUPS AND B3 BARS IN CAP MAY BE SHIFTED AS NECESSARY TO CLEAR ANCHOR BOLTS.

FOR PILE SPlice DETAILS, SEE END BENT DETAILS SHEET 3 OF 3.

THE TOP SURFACE AREAS OF THE END BENT CAP SHALL BE CURED IN ACCORDANCE WITH THE STANDARD SPECIFICATIONS, EXCEPT THE MEMBRANE CURING COMPOUND METHOD SHALL NOT BE USED.

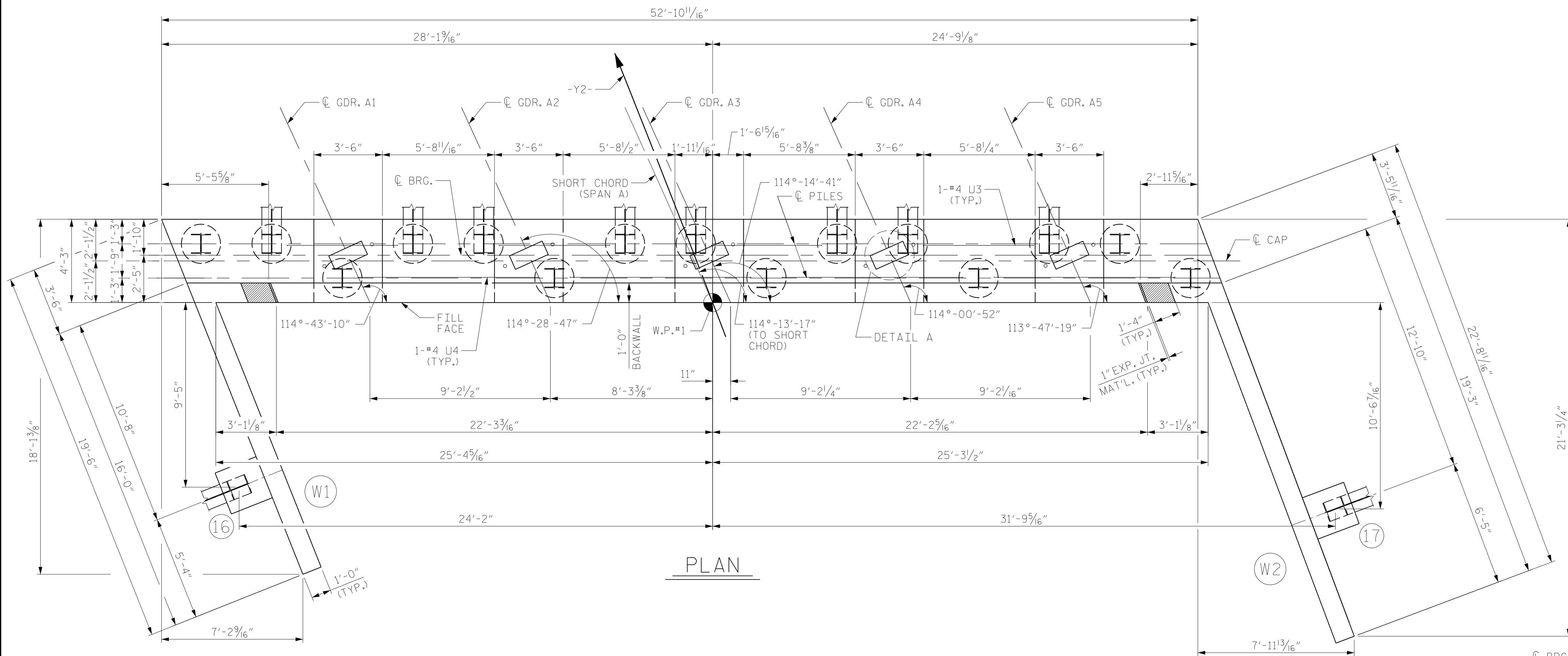
BACKWALL SHALL BE PLACED BEFORE APPLYING THE EPOXY PROTECTIVE COATING.

THE TOP SURFACE OF THE END BENT CAP EXCEPT BRIDGE SEAT BUILDUPS SHALL BE SLOPED TRANSVERSELY FROM THE FILL FACE TO THE FRONT FACE AT A RATE OF 2%.

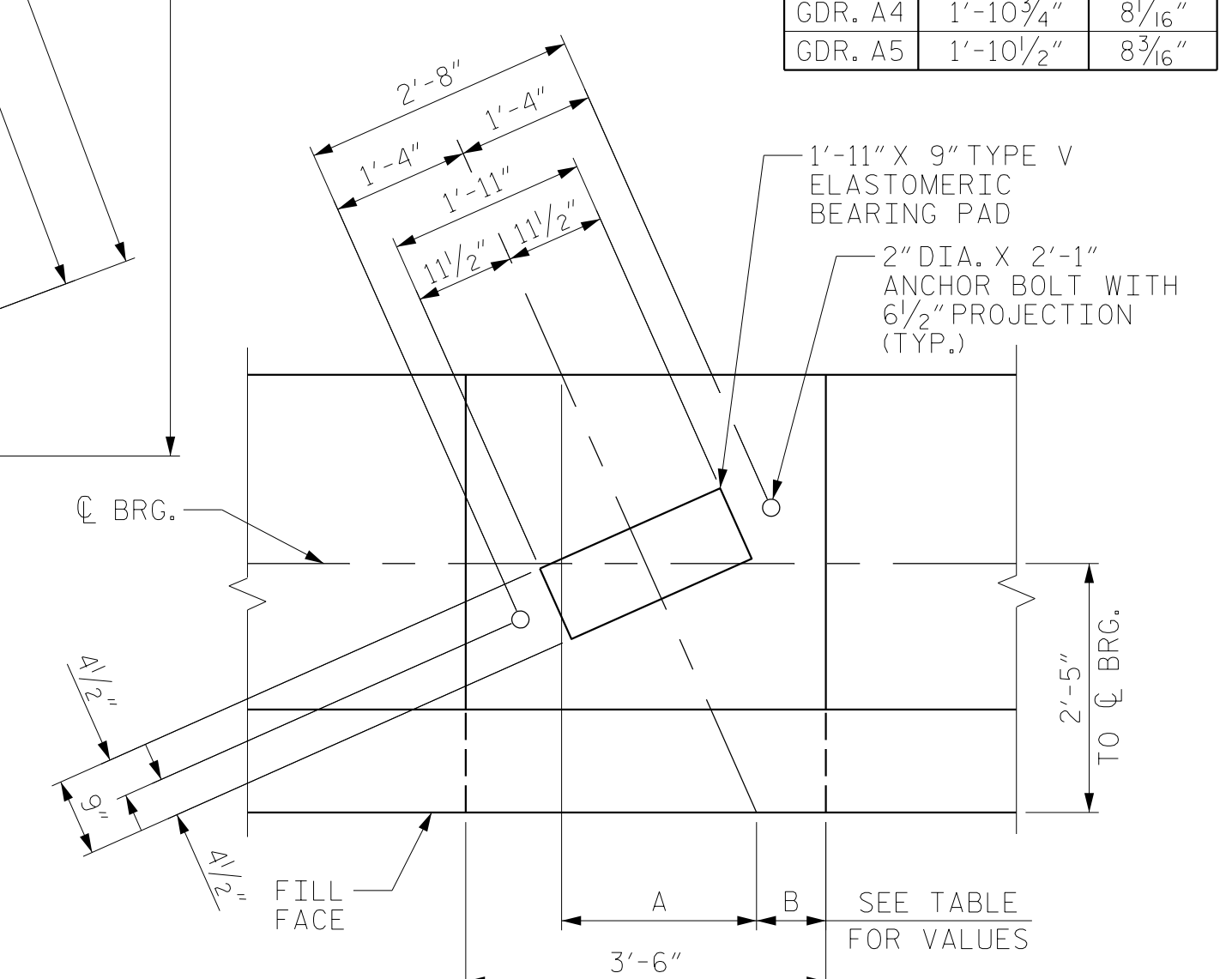
INSTALL THE 4" DRAIN PIPE THROUGH THE WING WALL AS REQUIRED FOR REINFORCED BRIDGE APPROACH FILL, SEE ROADWAY PLANS. REINFORCING STEEL IN THE WING WALL MAY BE SHIFTED AS NECESSARY TO CLEAR THE DRAIN.

THE CONCRETE IN THE SHADED AREA OF THE WING SHALL BE POURED AFTER THE JOINT BETWEEN THE DECK AND THE APPROACH SLAB HAS BEEN SAWED AND THE BARRIER RAIL IS CAST IF SLIP FORMING IS USED.

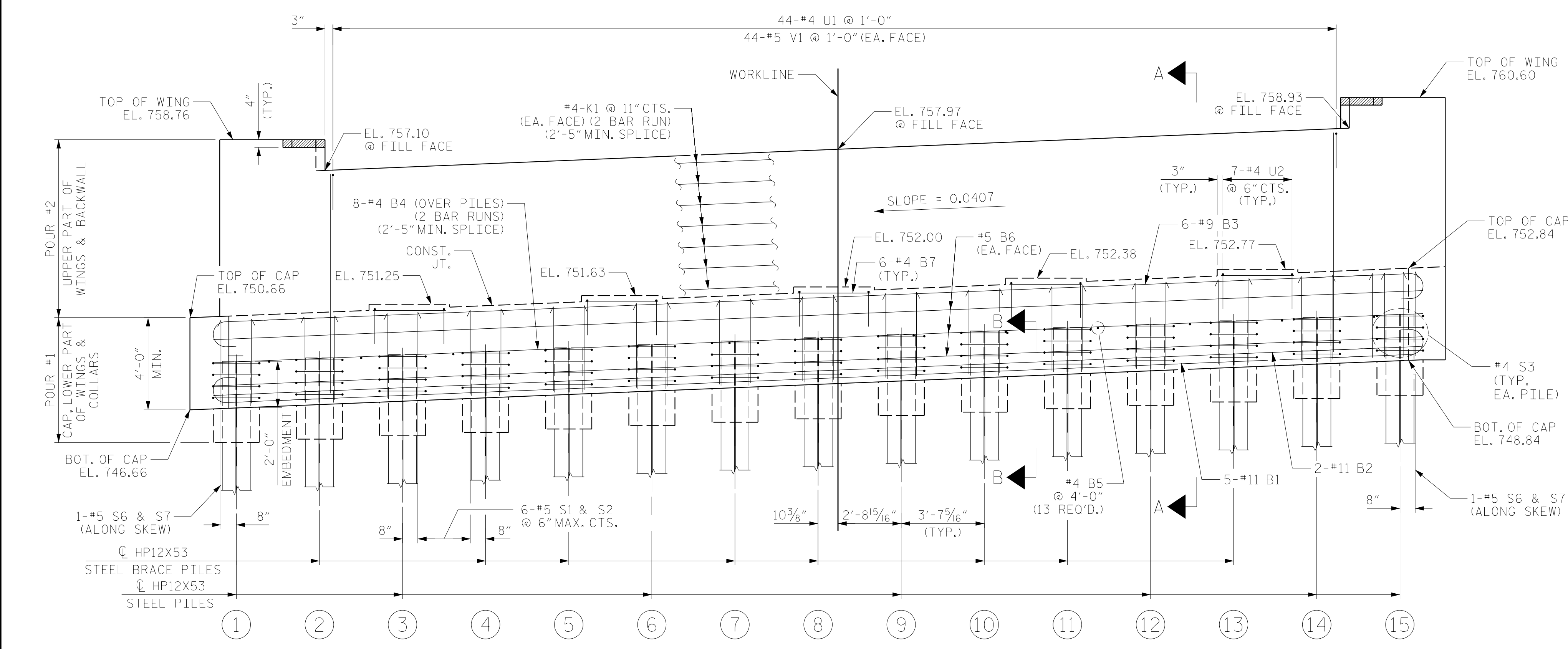
	A	B
GDR. A1	1'-11 1/2"	7 5/8"
GDR. A2	1'-11 1/4"	7 13/16"
GDR. A3	1'-10 5/16"	7 5/16"
GDR. A4	1'-10 3/4"	8 1/16"
GDR. A5	1'-10 1/2"	8 3/16"



PLAN



DETAIL A
DIMENSIONS TYP. EA. BRG.
PILE NOT SHOWN FOR CLARITY



ELEVATION
WINGS NOT SHOWN FOR CLARITY

PILE	ELEVATION
1	748.77
2	748.92
3	749.07
4	749.21
5	749.36
6	749.51
7	749.65
8	749.80
9	749.95
10	750.09
11	750.24
12	750.39
13	750.53
14	750.68
15	750.83
16	748.73
17	750.86

DOCUMENT NOT CONSIDERED FINAL UNLESS ALL SIGNATURES COMPLETED

PROJECT NO. R-2707C
CLEVELAND COUNTY
STATION: 29+07.16 -Y2-

SHEET 1 OF 3



REVISIONS						SHEET NO.
NO.	BY:	DATE:	NO.	BY:	DATE:	
1			3			S3-26
2			4			TOTAL SHEETS 36

DRAWN BY: MAL, MKO DATE: 12/2016
CHECKED BY: JMR DATE: 12/2016
DESIGN ENGINEER OF RECORD: MKO DATE: 12/2016