

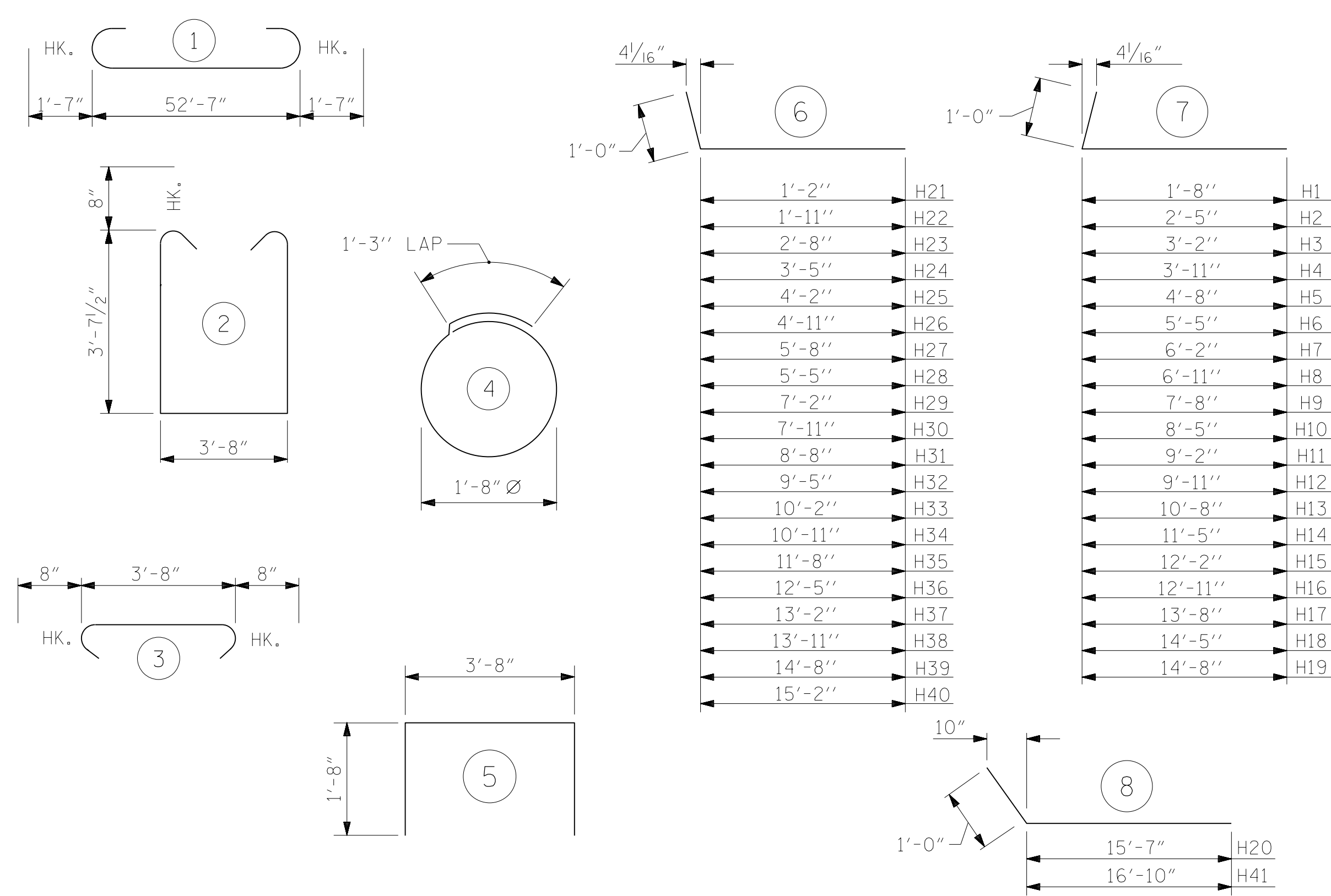
BAGGED STONE AND PIPE SHALL BE PLACED IMMEDIATELY AFTER COMPLETION OF END BENT EXCAVATION. PIPE MAY BE EITHER CONCRETE, CORRUGATED STEEL, CORRUGATED ALUMINUM ALLOY, OR CORRUGATED PLASTIC. PERFORATED PIPE WILL NOT BE ALLOWED.

BAGGED STONE SHALL REMAIN IN PLACE UNTIL THE ENGINEER DIRECTS THAT IT BE REMOVED. THE CONTRACTOR SHALL REMOVE AND DISPOSE OF SILT ACCUMULATIONS AT BAGGED STONE WHEN SO DIRECTED BY THE ENGINEER. BAGS SHALL BE REMOVED AND REPLACED WHENEVER THE ENGINEER DETERMINES THAT THEY HAVE DETERIORATED AND LOST THEIR EFFECTIVENESS.

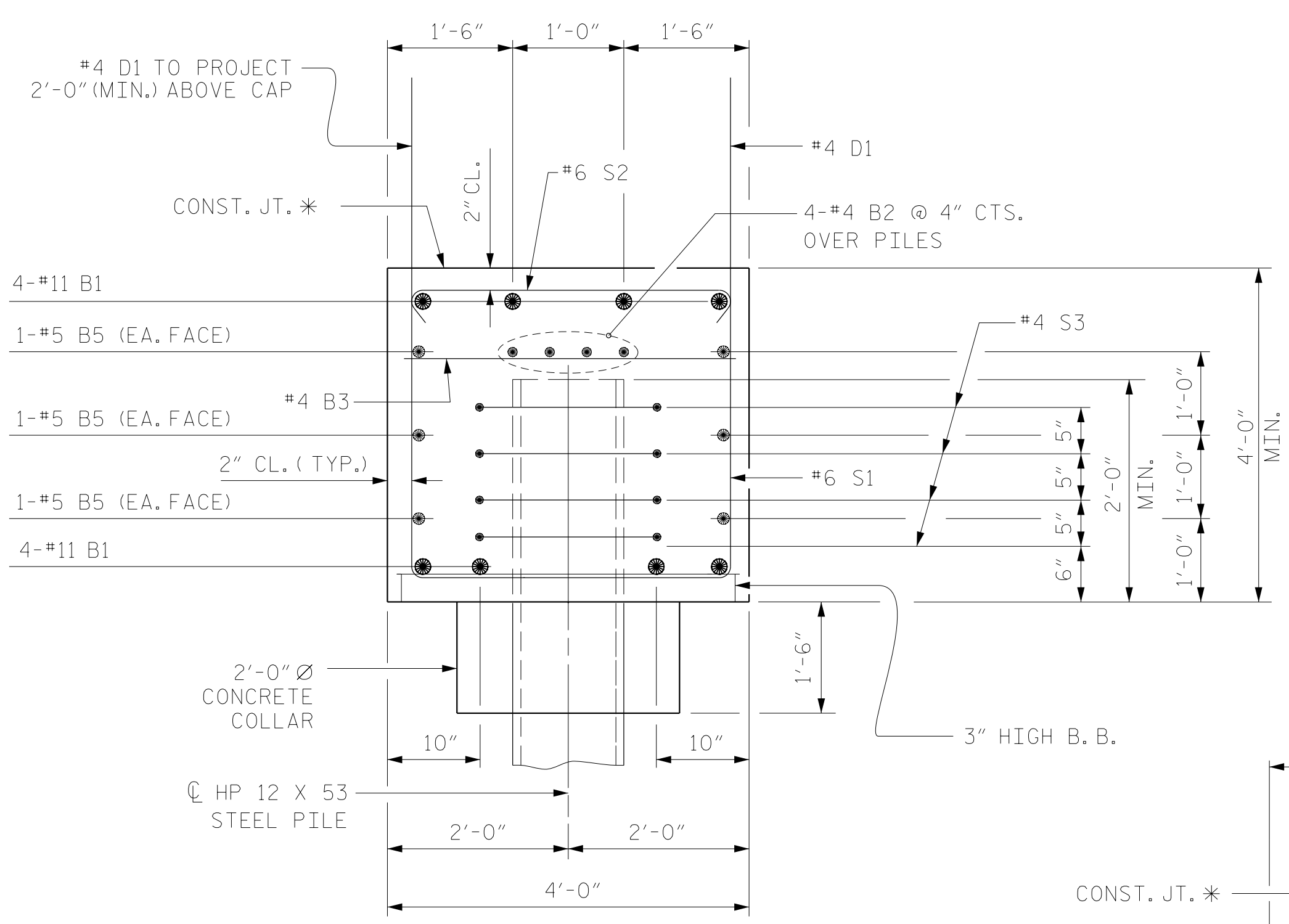
NO SEPARATE PAYMENT WILL BE MADE FOR THIS WORK AND THE ENTIRE COST OF THIS WORK SHALL BE INCLUDED IN THE UNIT CONTRACT PRICE BID FOR THE SEVERAL PAY ITEMS.

TEMPORARY DRAINAGE AT END BENT

BAR TYPES

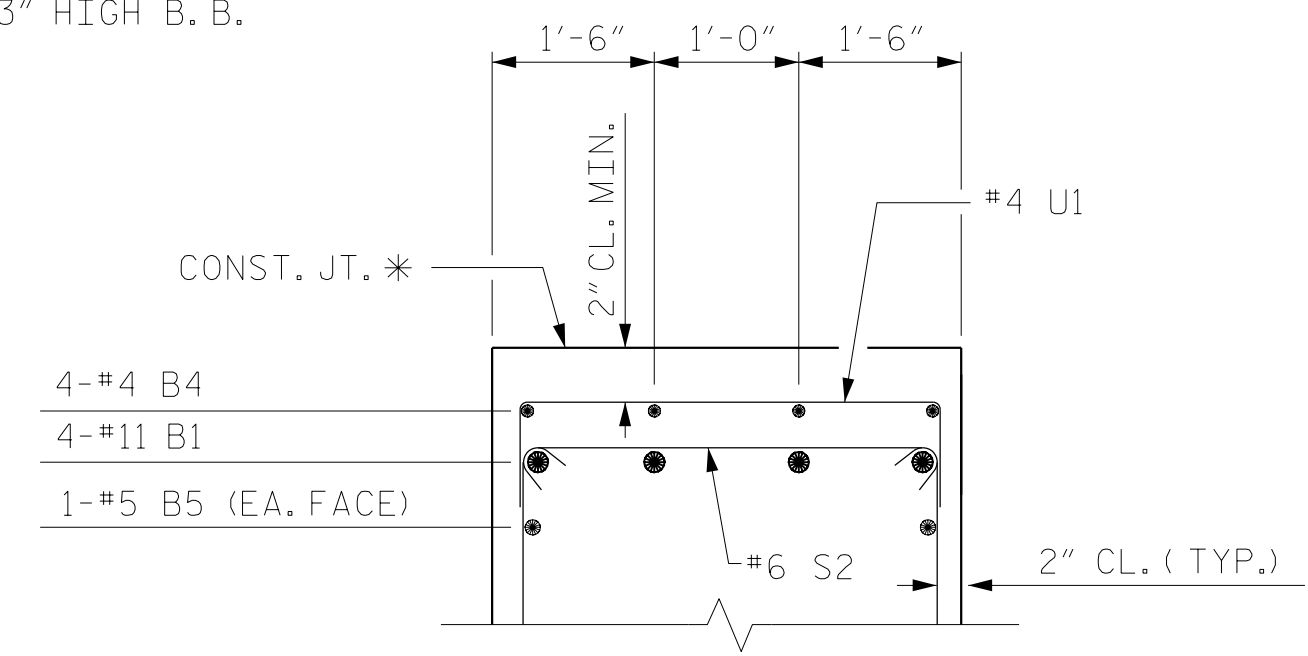


ALL BAR DIMENSIONS ARE OUT TO OUT.

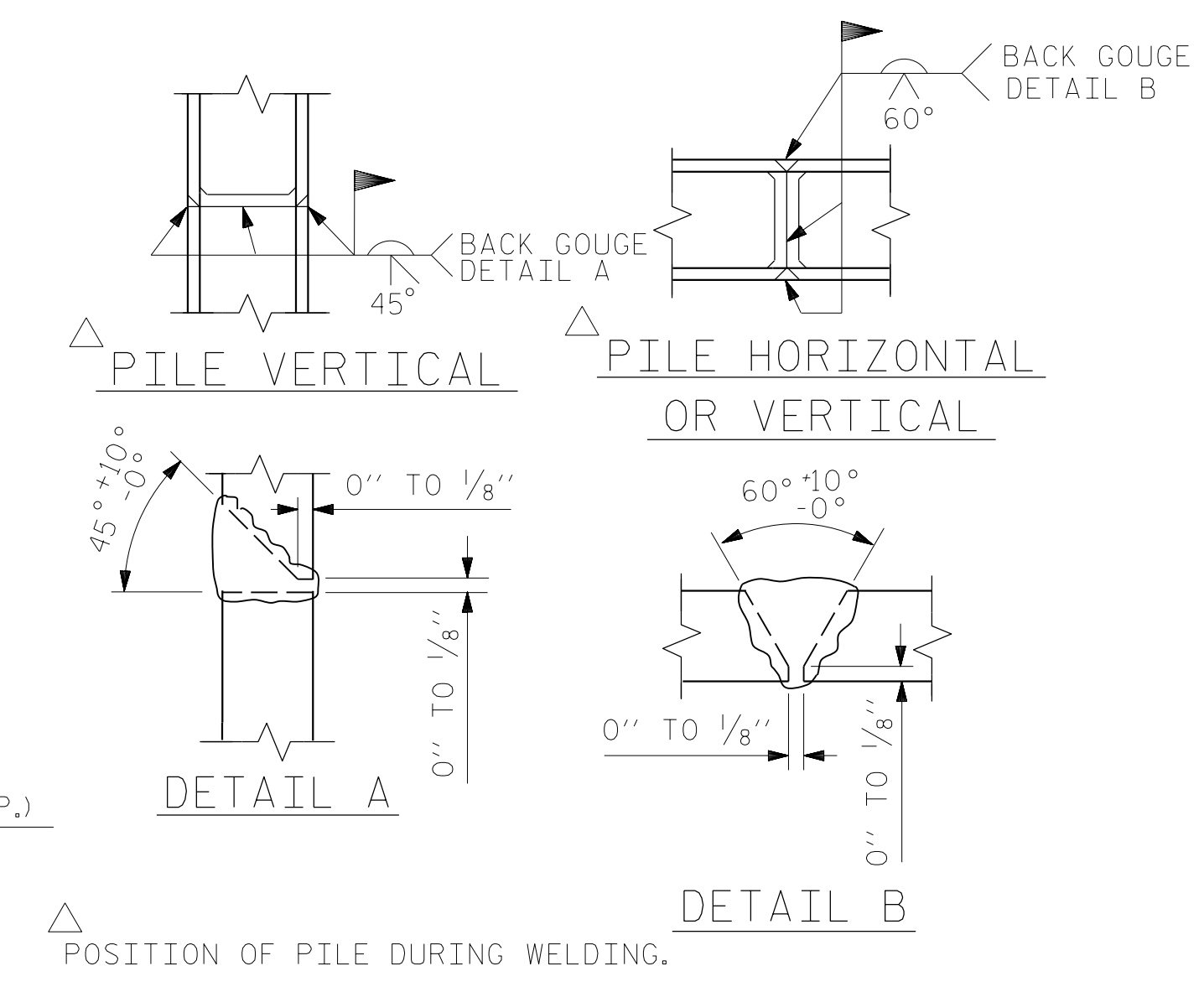


SECTION A-A

* THE TOP SURFACE OF THE END BENT CAP & WINGS, EXCLUDING THE BEARING AREA, SHALL BE RAKED TO A DEPTH OF 1/4".



PARTIAL SECTION B-B



PILE SPLICE DETAILS

BILL OF MATERIAL
END BENT NO. 2

BAR NO.	SIZE	TYPE	LENGTH	WEIGHT	BAR NO.	SIZE	TYPE	LENGTH	WEIGHT	
B1	#8	#11	1	55'-9"	2370	K1	#4	STR	2'-10"	30
B2	#8	#4	STR	27'-7"	147	K2	#4	STR	2'-9"	29
B3	13	#4	STR	3'-8"	32					
B4	4	#4	STR	10'-0"	27	S1	#6	2	12'-3"	1398
B5	6	#5	STR	52'-7"	329	S2	#6	3	5'-0"	571
						S3	#4	4	6'-6"	191
D1	80	#4	STR	4'-0"	214	U1	#4	5	7'-0"	33
H1	2	#6	7	2'-8"	8	V1	#6	STR	11'-9"	459
H2	2	#6	7	3'-5"	10	V2	#6	STR	11'-6"	69
H3	2	#6	7	4'-2"	13	V3	#6	STR	11'-2"	67
H4	2	#6	7	4'-11"	15	V4	#6	STR	10'-10"	65
H5	2	#6	7	5'-5"	17	V5	#6	STR	10'-6"	63
H6	2	#6	7	6'-5"	19	V6	#6	STR	10'-2"	61
H7	2	#6	7	7'-2"	22	V7	#6	STR	9'-10"	59
H8	2	#6	7	7'-11"	24	V8	#6	STR	9'-6"	57
H9	2	#6	7	8'-8"	26	V9	#6	STR	9'-2"	55
H10	2	#6	7	9'-5"	28	V10	#6	STR	8'-10"	53
H11	2	#6	7	10'-2"	31	V11	#6	STR	8'-6"	51
H12	2	#6	7	10'-11"	33	V12	#6	STR	8'-2"	49
H13	2	#6	7	11'-8"	35	V13	#6	STR	7'-6"	47
H14	2	#6	7	12'-5"	37	V14	#6	STR	7'-2"	45
H15	2	#6	7	13'-2"	40	V15	#6	STR	6'-10"	43
H16	2	#6	7	13'-11"	42	V16	#6	STR	6'-6"	41
H17	2	#6	7	14'-8"	44	V17	#6	STR	6'-2"	39
H18	2	#6	7	15'-5"	46	V18	#6	STR	5'-10"	37
H19	12	#6	7	15'-8"	282	V19	#6	STR	5'-6"	35
H20	2	#6	8	16'-7"	50	V20	#6	STR	5'-2"	33
H21	2	#6	6	2'-2"	7	V21	#6	STR	4'-10"	31
H22	2	#6	6	2'-11"	9	V22	#6	STR	4'-6"	29
H23	2	#6	6	3'-8"	11	V23	#6	STR	4'-2"	27
H24	2	#6	6	4'-5"	13	V24	#6	STR	3'-10"	25
H25	2	#6	6	5'-2"	16	V25	#6	STR	3'-6"	23
H26	2	#6	6	5'-11"	18	V26	#6	STR	3'-2"	21
H27	2	#6	6	6'-8"	20	V27	#6	STR	2'-10"	19
H28	2	#6	6	6'-5"	19	V28	#6	STR	2'-6"	17
H29	2	#6	6	8'-2"	25					
H30	2	#6	6	8'-11"	27					
H31	2	#6	6	9'-8"	29					
H32	2	#6	6	10'-5"	31					
H33	2	#6	6	11'-2"	34					
H34	2	#6	6	11'-11"	36					
H35	2	#6	6	12'-8"	38					
H36	2	#6	6	13'-5"	40					
H37	2	#6	6	14'-2"	43					
H38	2	#6	6	14'-11"	45					
H39	2	#6	6	15'-8"	47					
H40	10	#6	6	16'-2"	243					
H41	2	#6	8	17'-10"	54					

REINFORCING STEEL	8,619 LBS.
CLASS A CONCRETE	
POUR #1	
CAP, CONCRETE COLLARS & LOWER PART OF WINGS	36.6 C. Y.
POUR #2	
UPPER PART OF WINGS	10.6 C. Y.
TOTAL	47.2 C. Y.
HP 12 X 53 STEEL PILES	
NO. 11	165 LIN. FT.
STEEL PILE POINTS	NO.: 11

PROJECT NO. R-2707C
CLEVELAND COUNTY
 STATION: 384+50.00 -L-
 SHEET 4 OF 4

STATE OF NORTH CAROLINA DEPARTMENT OF TRANSPORTATION RALEIGH					
SUBSTRUCTURE INTEGRAL END BENT NO. 2 RIGHT LANE					
REVISIONS					
NO.	BY:	DATE:	NO.	BY:	DATE:
1			3		
2			4		
SHEET NO.					S2-34
TOTAL SHEETS					36

DRAWN BY : PDS DATE : 11/2016
 CHECKED BY : TLC DATE : 01/2017
 DESIGN ENGINEER OF RECORD: MAL DATE : 11/2016

DOCUMENT NOT CONSIDERED FINAL UNLESS ALL SIGNATURES COMPLETED