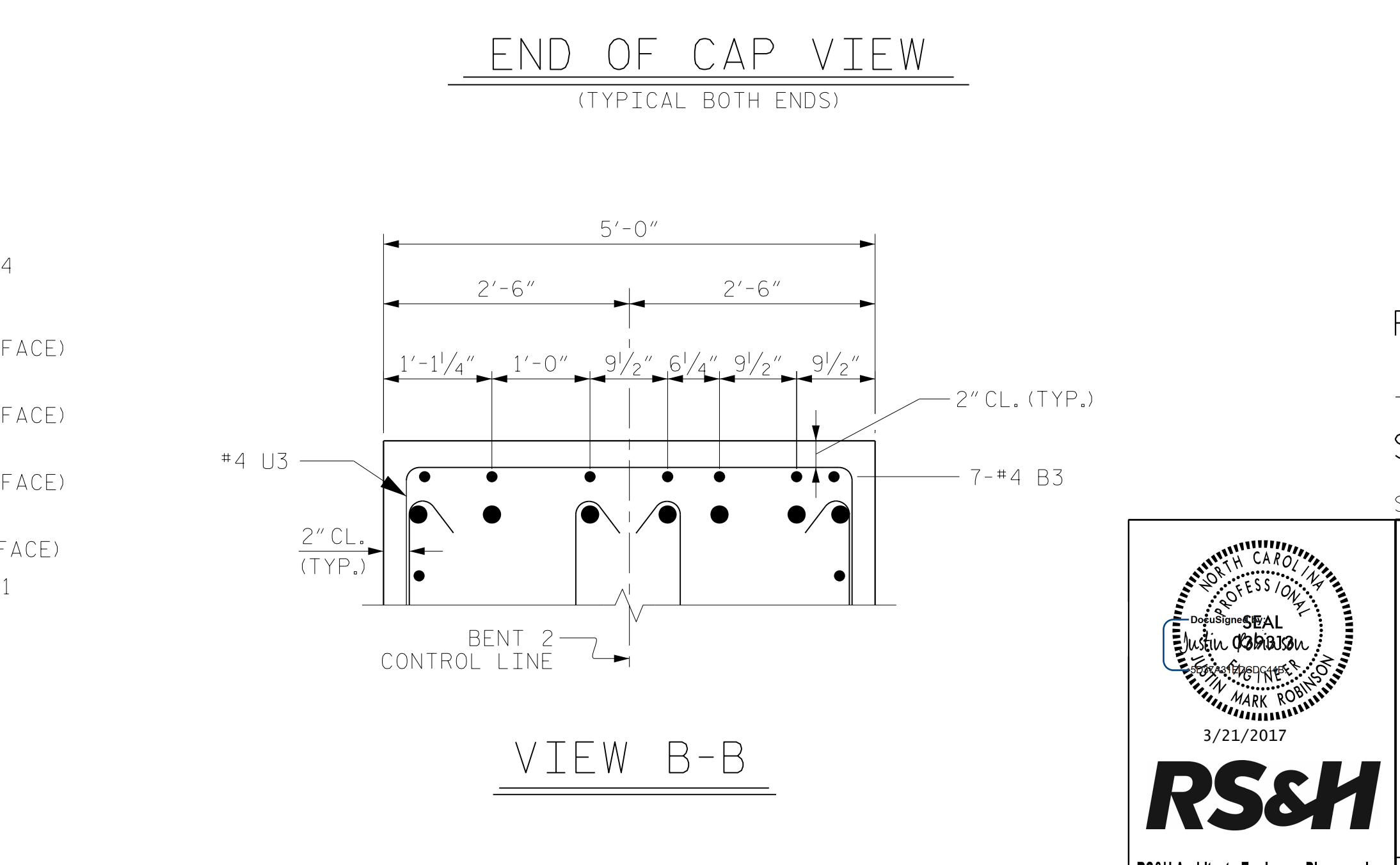
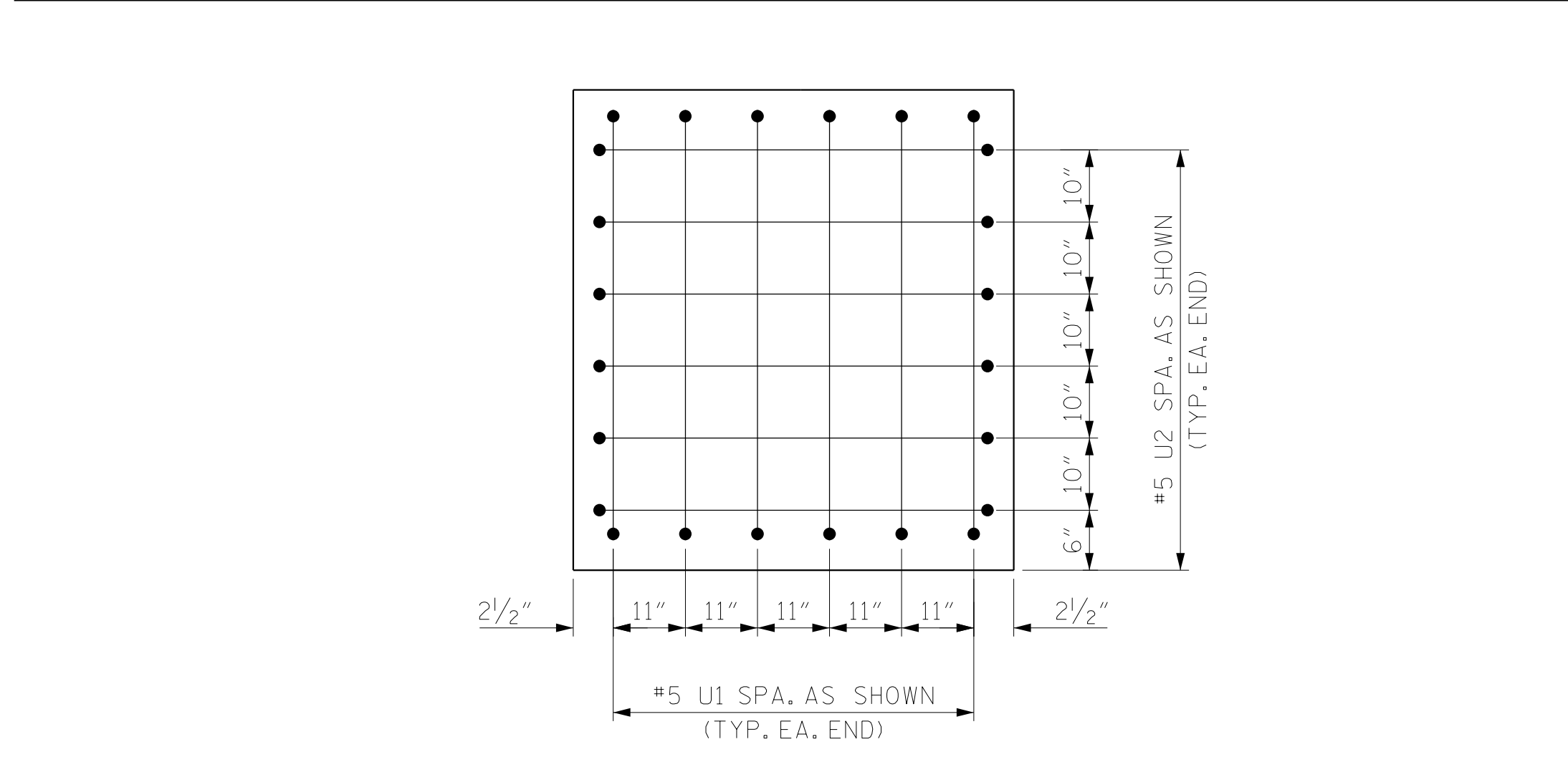
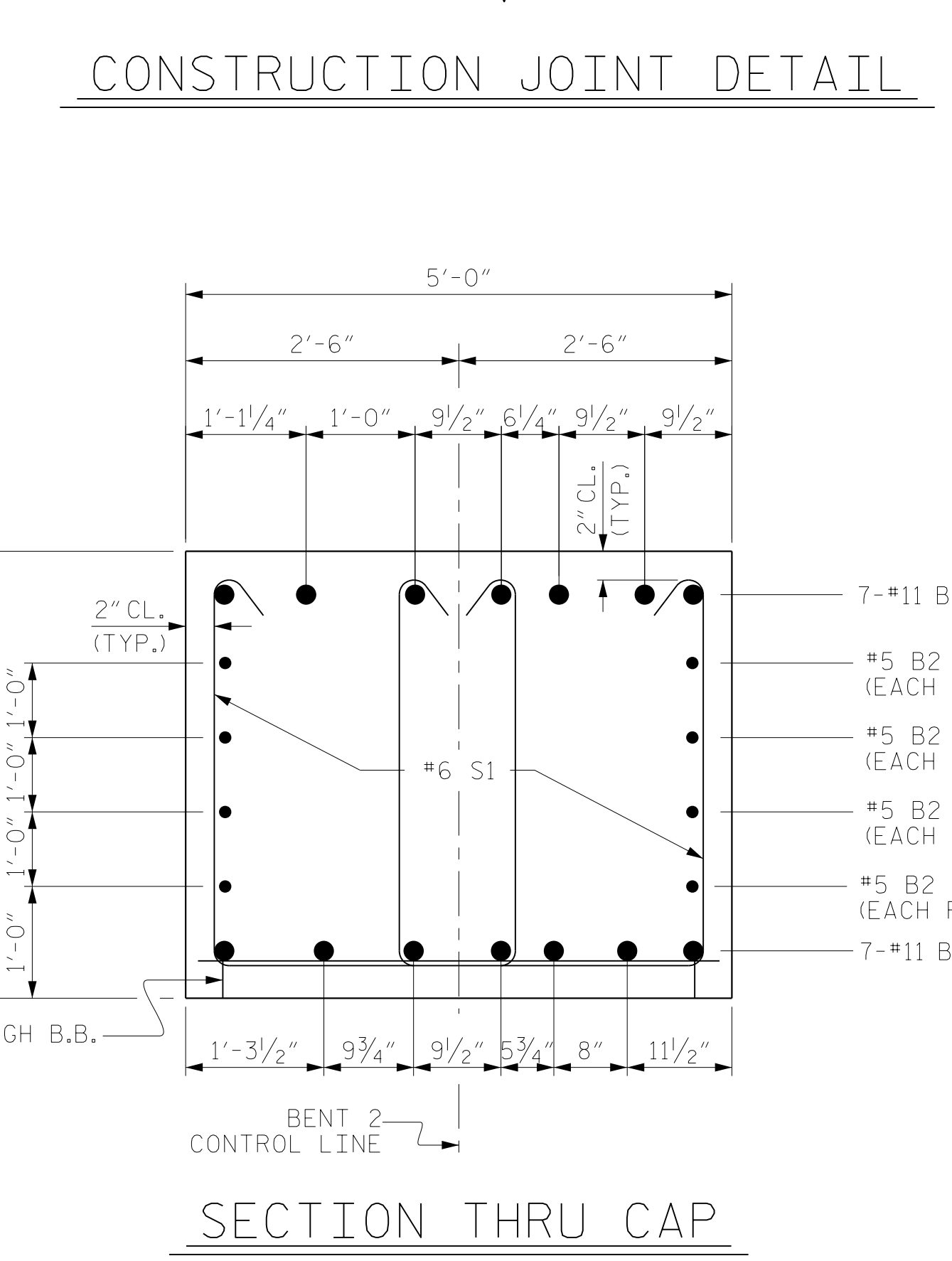
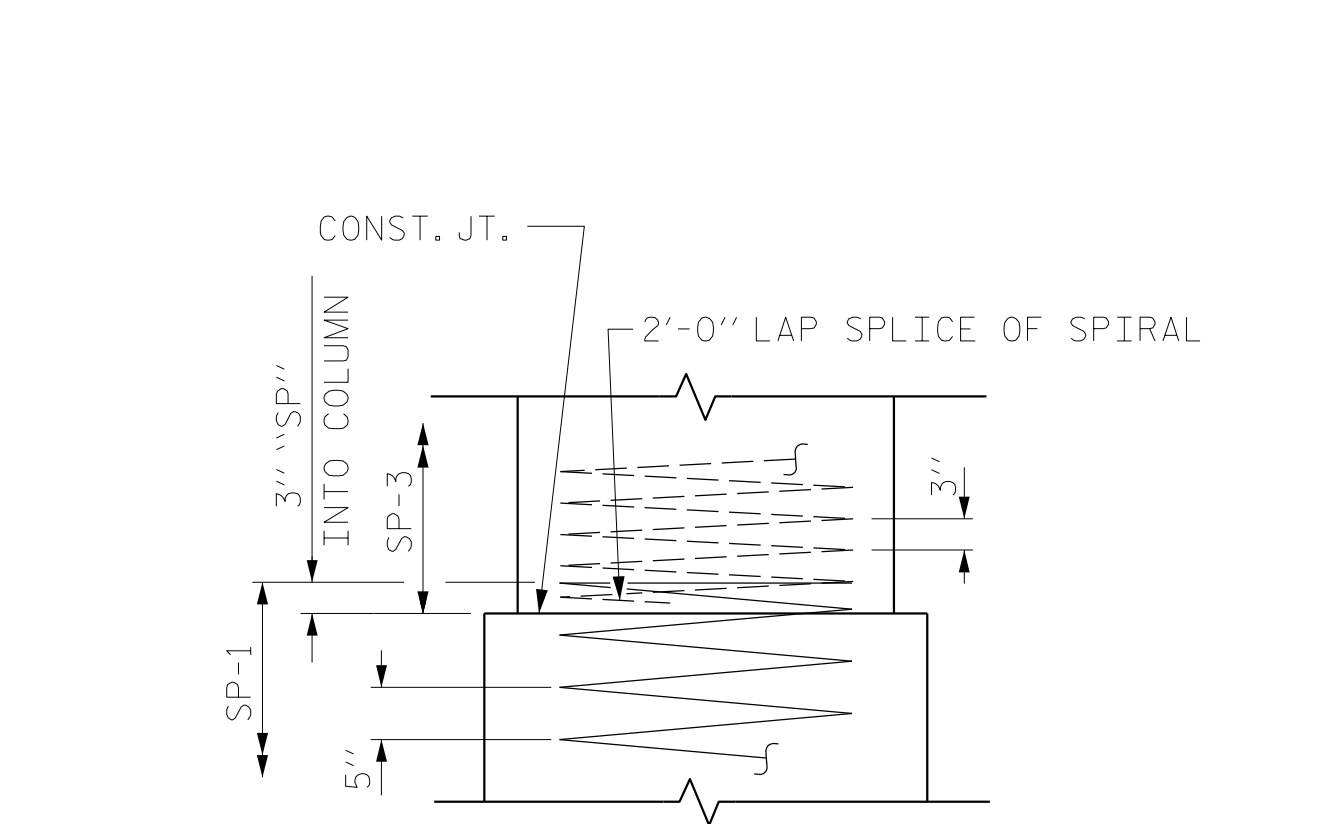
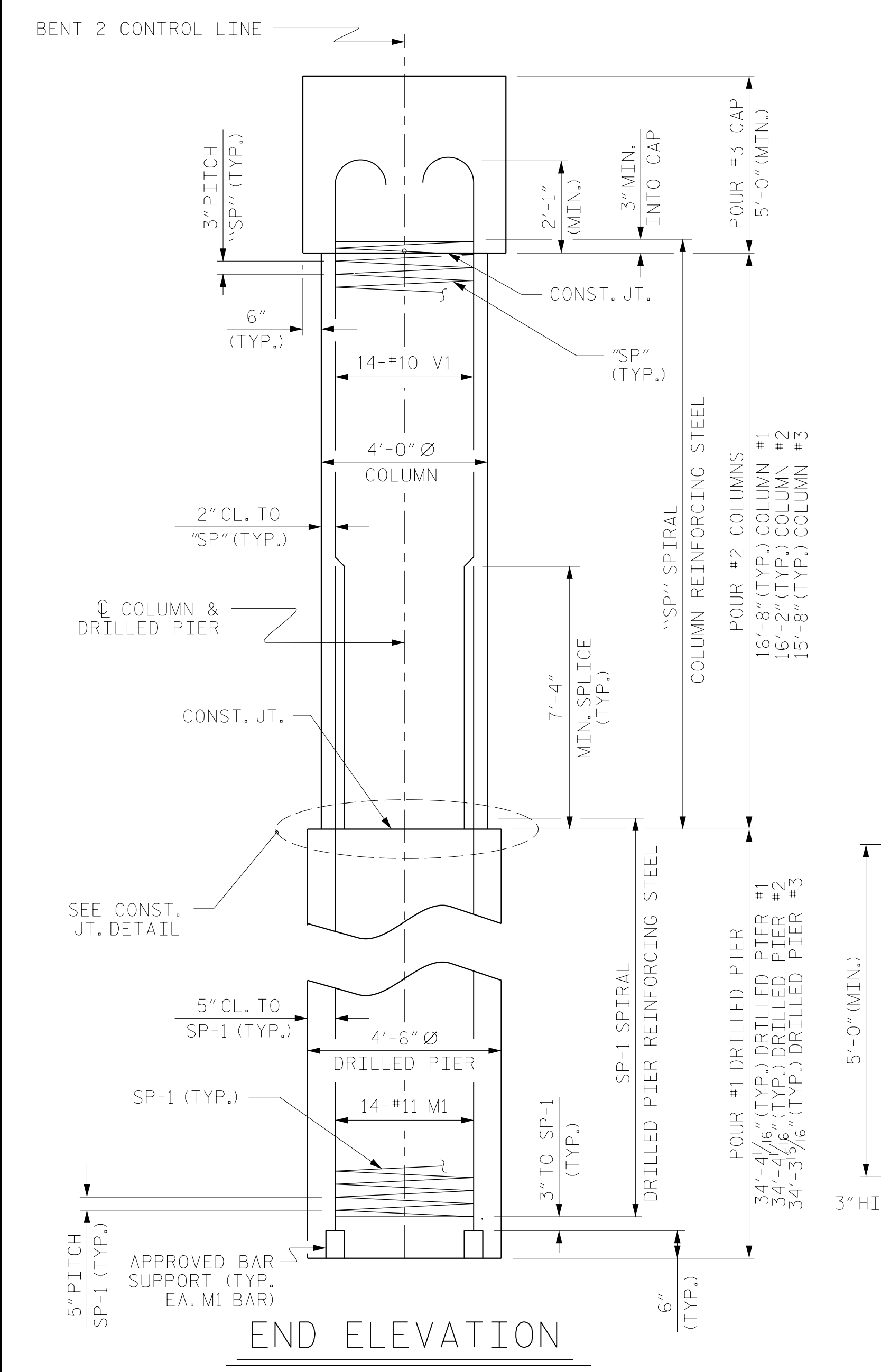


BILL OF MATERIAL FOR BENT 2					
BAR	NO.	SIZE	TYPE	LENGTH	WEIGHT
B1	7	#11	STR	43'-2"	1,605
B2	8	#5	STR	43'-2"	360
B3	28	#4	STR	4'-8"	87
B4	7	#11	1	46'-4"	1,723
M1	42	#11	STR	44'-2"	9,856
S1	100	#6	2	13'-6"	2,028
U1	12	#5	3	7'-8"	96
U2	12	#5	3	7'-6"	94
U3	36	#4	3	7'-8"	184
V1	42	#10	4	20'-2"	3,645
REINFORCING STEEL (FOR BENT 2)					19,678 LBS.
SP-1	3	**	5	940'-4"	2,942
SP-2	1	*	6	788'-10"	527
SP-3	1	*	6	766'-1"	512
SP-4	1	*	6	743'-4"	497



SPIRAL COLUMN REINFORCING STEEL (FOR BENT 2)		4,478 LBS.
* THE SP-1 SPIRAL REINFORCING STEEL SHALL BE W31 OR D-31 COLD DRAWN WIRE OR #5 PLAIN OR DEFORMED BAR		
* THE SP-2, SP-3 AND SP-4 SPIRAL REINFORCING STEEL SHALL BE W20 OR D-20 COLD DRAWN WIRE OR #4 PLAIN OR DEFORMED BAR		
CLASS A CONCRETE BREAKDOWN (FOR BENT 2)		
POUR #2 (COLUMNS)		22.6 C.Y.
POUR #3 (CAP)		41.5 C.Y.
TOTAL CLASS A CONCRETE		64.1 C.Y.
DRILLED PIERS: (FOR BENT 2)		
DRILLED PIER CONCRETE POUR #1 (DRILLED PIERS)		60.7 CY
4'-6" Ø DRILLED PIER NOT IN SOIL		27.0 LIN. FT.
4'-6" Ø DRILLED PIER IN SOIL		76.0 LIN. FT.
PERMANENT STEEL CASING FOR 4'-6" Ø DRILLED PIERS		54 LIN. FT.
Δ CSL TUBES		430.0 LIN. FT.

Δ NO SEPARATE PAYMENT WILL BE MADE FOR CSL TUBES. CSL TUBES WILL BE INCLUDED IN THE UNIT BID PRICE FOR DRILLED PIERS.

PROJECT NO. R-2707C
CLEVELAND COUNTY
 STATION: 384+50.00 -L-
 SHEET 2 OF 2

STATE OF NORTH CAROLINA DEPARTMENT OF TRANSPORTATION RALEIGH					
SUBSTRUCTURE BENT NO. 2 DETAILS RIGHT LANE					
REVISIONS					
NO.	BY:	DATE:	NO.	BY:	DATE:
1			3		
2			4		

SHEET NO. S2-30
 TOTAL SHEETS 36

DRAWN BY : PDS DATE : 11/2016
 CHECKED BY : TLC DATE : 01/2017
 DESIGN ENGINEER OF RECORD: MAL DATE : 11/2016

DOCUMENT NOT CONSIDERED FINAL UNLESS ALL SIGNATURES COMPLETED