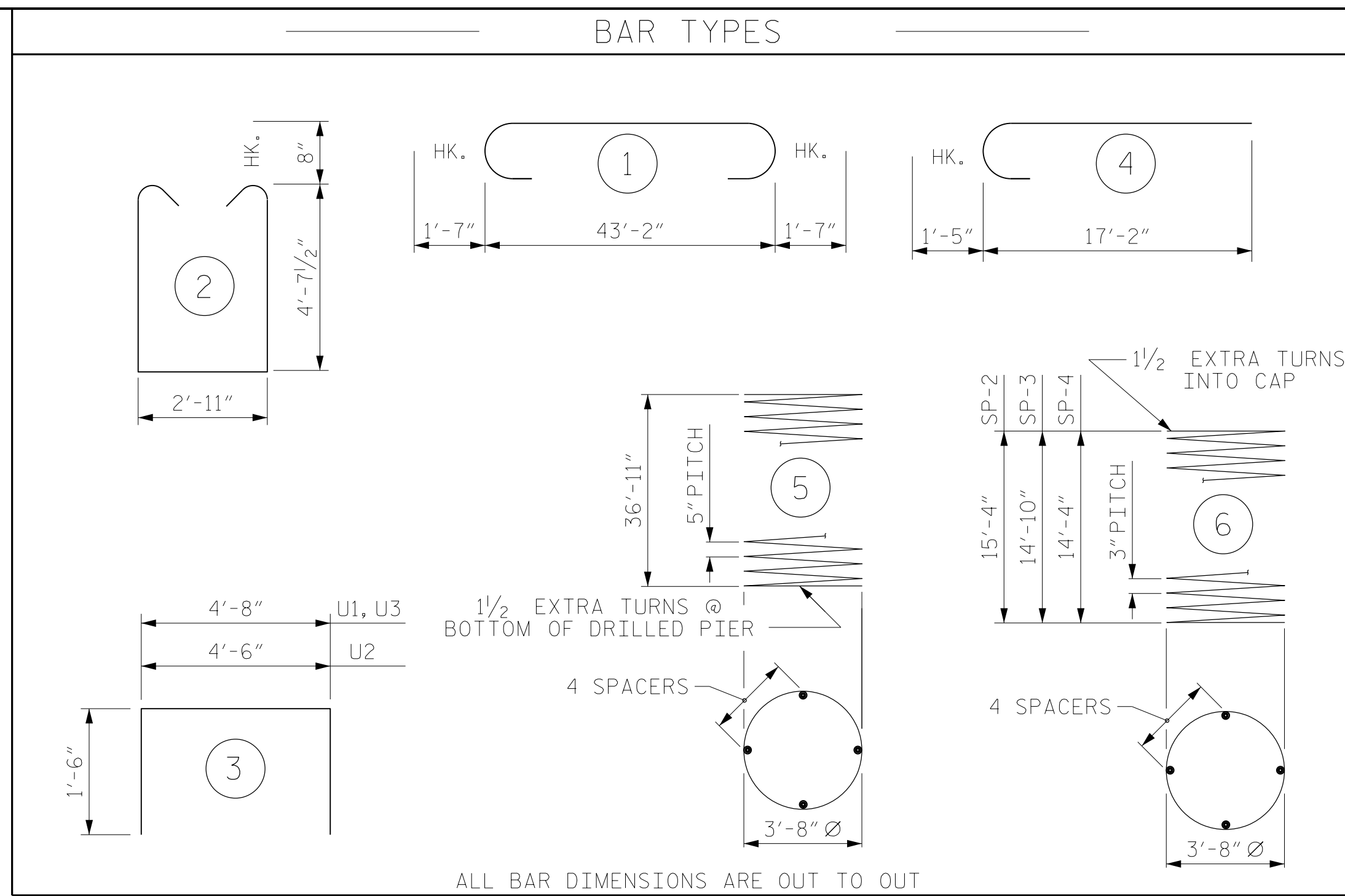


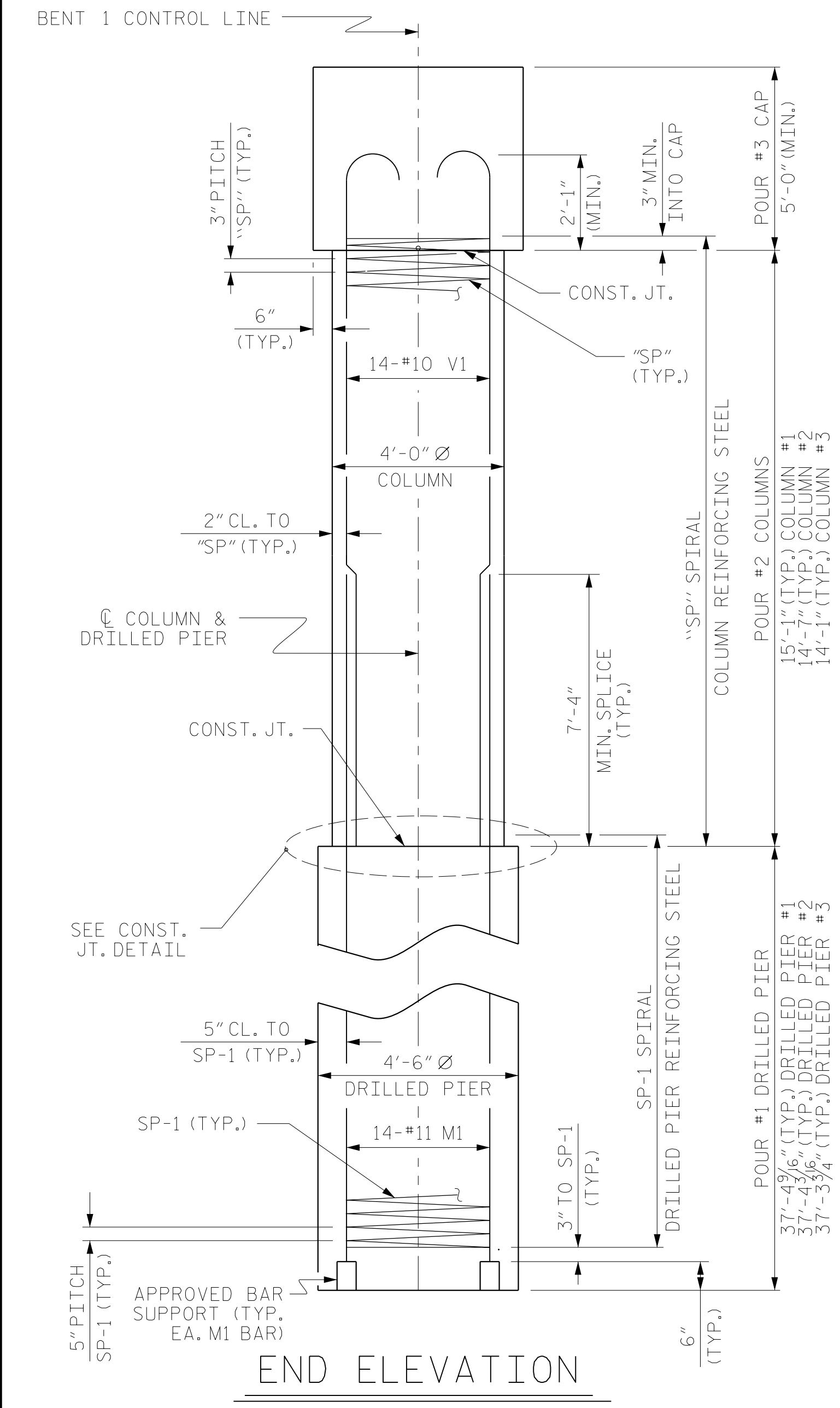
PLAN OF DRILLED PIERS & COLUMNS

NOTE: RLGL = RIGHT LANE GRADE LINE

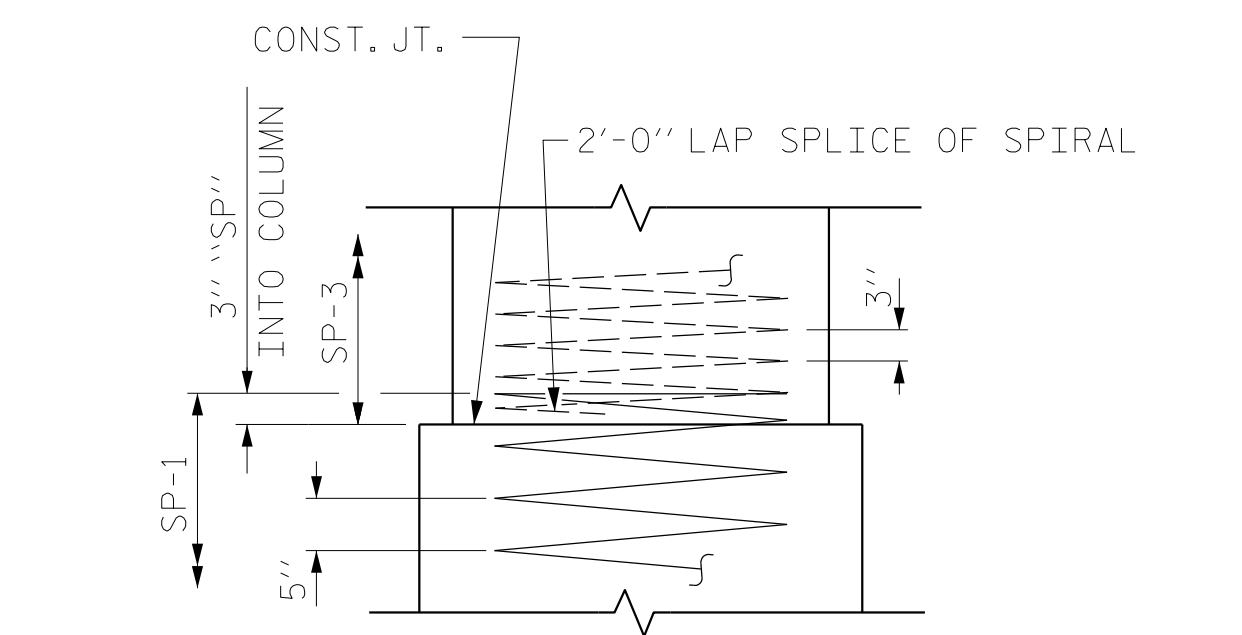


ALL BAR DIMENSIONS ARE OUT TO OUT

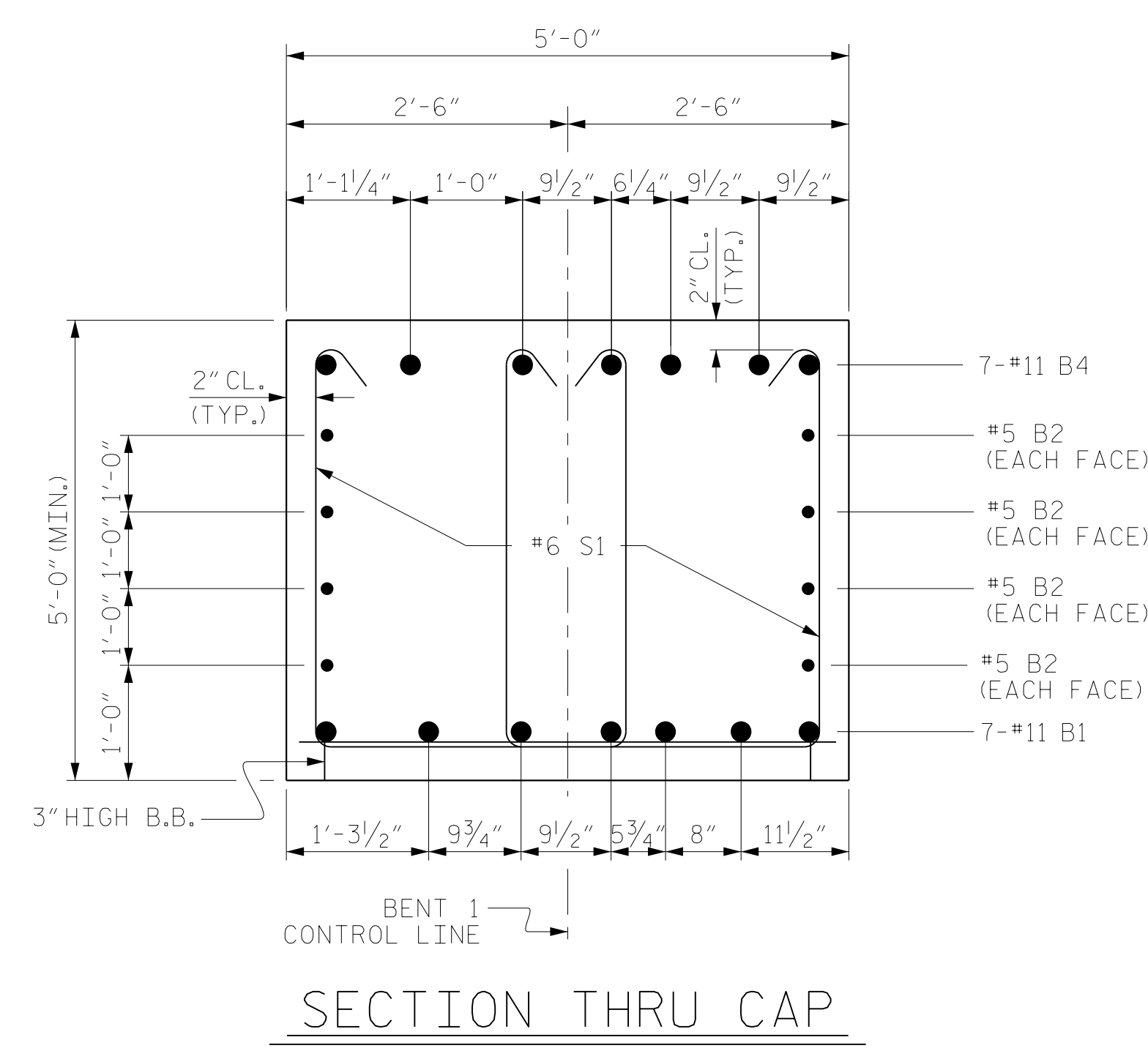
BILL OF MATERIAL FOR BENT 1					
BAR	NO.	SIZE	TYPE	LENGTH	WEIGHT
B1	7	#11	STR	43'-2"	1,605
B2	8	#5	STR	43'-2"	360
B3	28	#4	STR	4'-8"	87
B4	7	#11	1	46'-4"	1,723
M1	42	#11	STR	47'-3"	10,544
S1	100	#6	2	13'-6"	2,028
U1	12	#5	3	7'-8"	96
U2	12	#5	3	7'-6"	94
U3	36	#4	3	7'-8"	184
V1	42	#10	4	18'-7"	3,358
REINFORCING STEEL (FOR BENT 1)					20,079 LBS.
SP-1	3	**	5	1025'-7"	3,209
SP-2	1	*	6	717'-8"	479
SP-3	1	*	6	694'-11"	464
SP-4	1	*	6	672'-1"	449



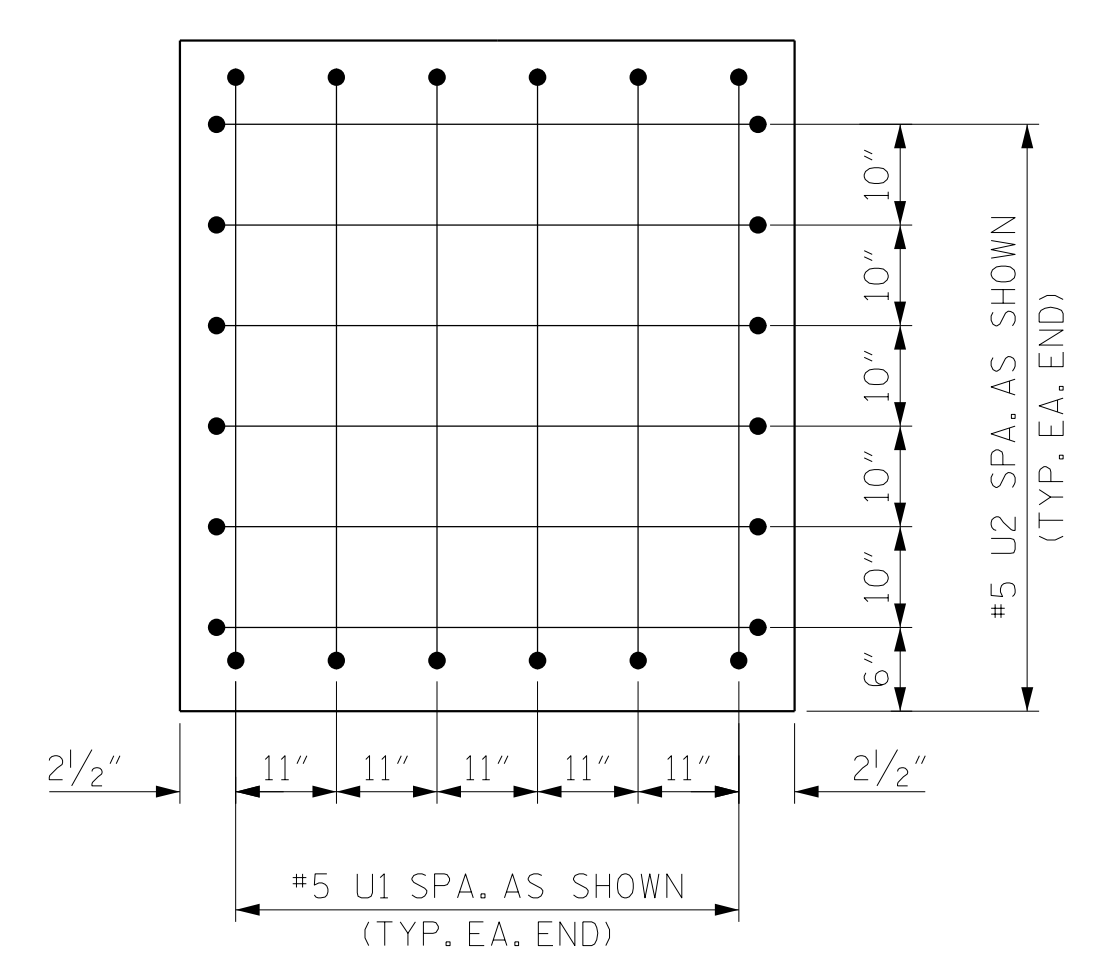
END ELEVATION



CONSTRUCTION JOINT DETAIL

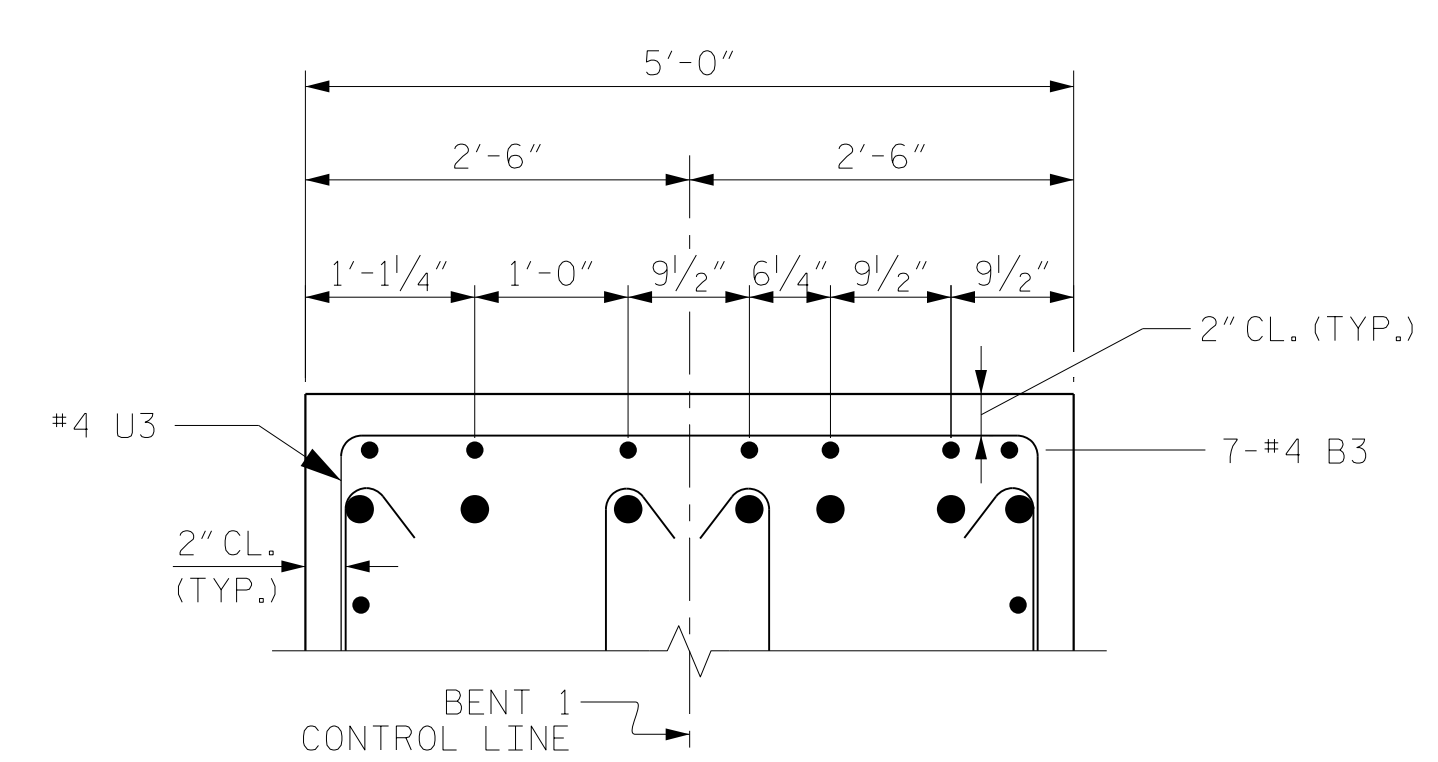


SECTION THRU CAP



END OF CAP VIEW

(TYPICAL BOTH ENDS)



VIEW B-B

SPIRAL COLUMN REINFORCING STEEL (FOR BENT 1) 4,601 LBS.
 ** THE SP-1 SPIRAL REINFORCING STEEL SHALL BE W31 OR D-31 COLD DRAWN WIRE OR #5 PLAIN OR DEFORMED BAR
 * THE SP-2, SP-3 & SP-4 SPIRAL REINFORCING STEEL SHALL BE W20 OR D-20 COLD DRAWN WIRE OR #4 PLAIN OR DEFORMED BAR

CLASS A CONCRETE BREAKDOWN (FOR BENT 1)	
POUR #2 (COLUMNS)	20.4 C.Y.
POUR #3 (CAP)	42.1 C.Y.
TOTAL CLASS A CONCRETE	62.5 C.Y.

DRILLED PIERS: (FOR BENT 1)	
DRILLED PIER CONCRETE POUR #1 (DRILLED PIERS)	66.0 C.Y.
4'-6" Ø DRILLED PIER NOT IN SOIL	27.0 LIN. FT.
4'-6" Ø DRILLED PIER IN SOIL	85.0 LIN. FT.
PERMANENT STEEL CASING FOR 4'-6" Ø DRILLED PIERS	54 LIN. FT.
Δ CSL TUBES	467.0 LIN. FT.

Δ NO SEPARATE PAYMENT WILL BE MADE FOR CSL TUBES. CSL TUBES WILL BE INCLUDED IN THE UNIT BID PRICE FOR DRILLED PIERS.

PROJECT NO. R-2707C
CLEVELAND COUNTY
 STATION: 384+50.00 -L-
 SHEET 2 OF 2

RS&H Architects-Engineers-Planners, Inc.
 8601 Six Forks Road, Suite 260
 Raleigh, NC 27615
 919-926-4100 FAX 919-846-9080
 www.rsandh.com
 North Carolina License No. 00737-5403-1-C&E

REVISIONS						SHEET NO.
NO.	BY:	DATE:	NO.	BY:	DATE:	S2-28
1			3			TOTAL SHEETS
2			4			36

DRAWN BY :	PDS	DATE :	11/2016
CHECKED BY :	TLC	DATE :	01/2017
DESIGN ENGINEER OF RECORD:	MAL	DATE :	11/2016

DOCUMENT NOT CONSIDERED FINAL UNLESS ALL SIGNATURES COMPLETED