

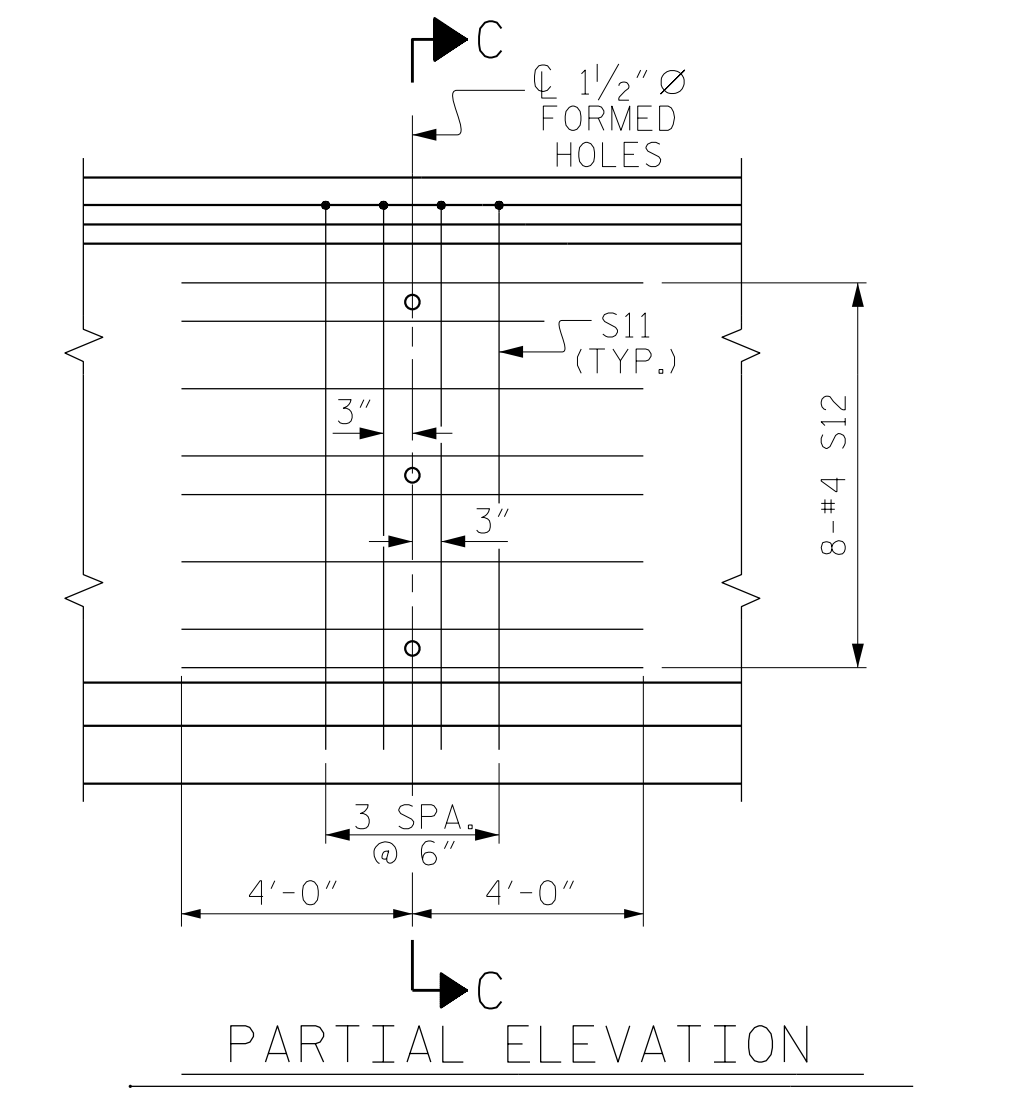
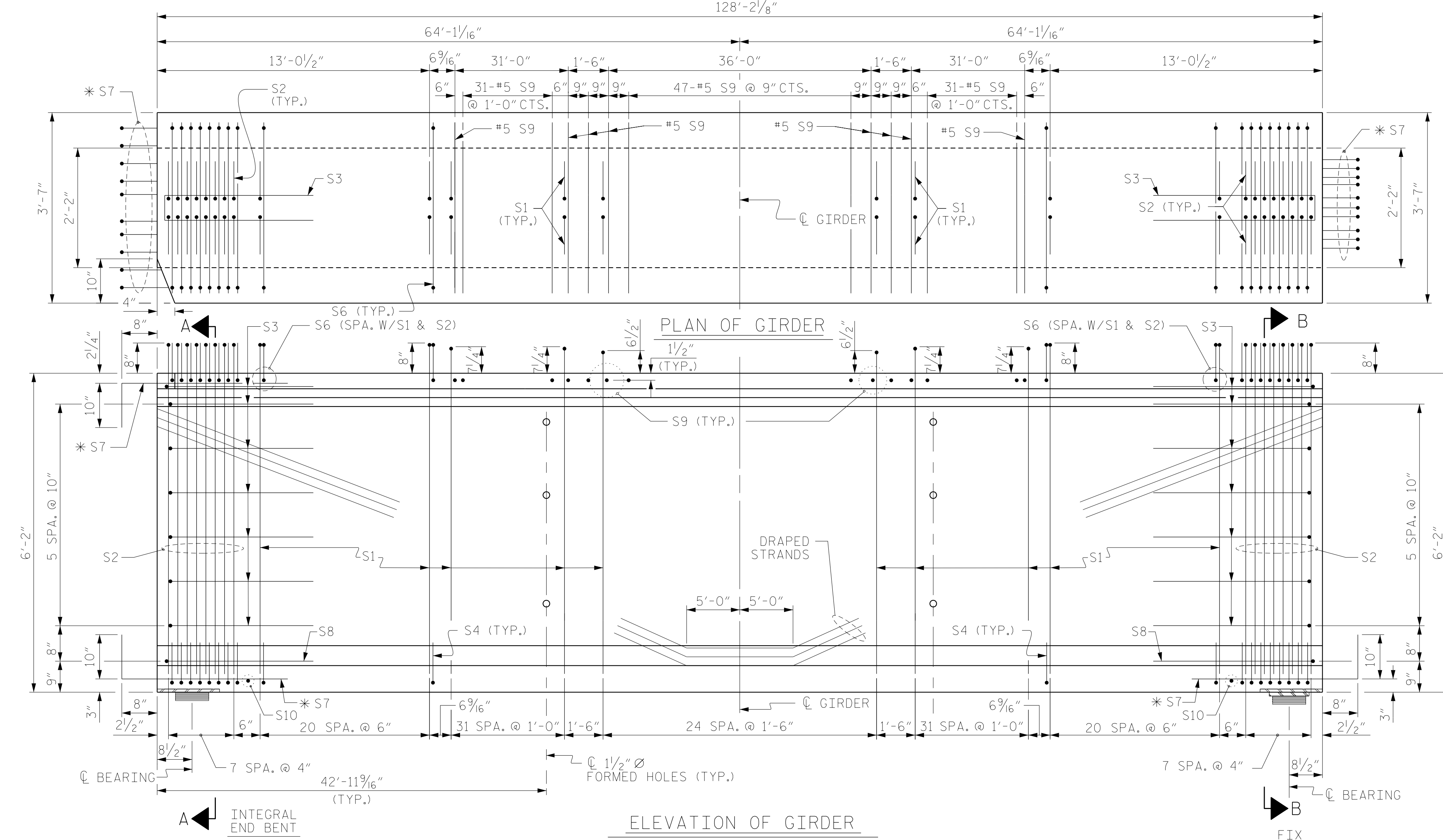
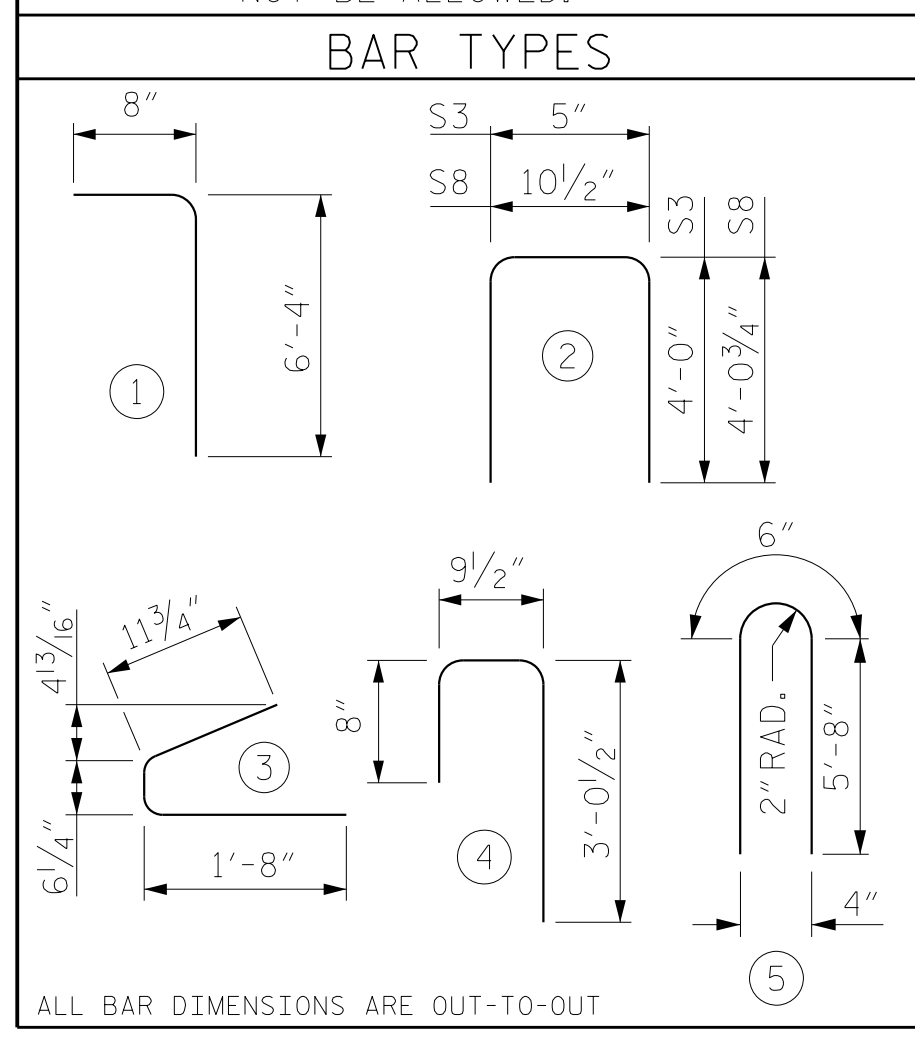
0.6" Ø L. R. GRADE 270 STRANDS

AREA (SQUARE INCHES)	ULTIMATE STRENGTH (LBS. PER STRAND)	APPLIED PRESTRESS (LBS. PER STRAND)
0.217	58,600	43,950

REINFORCING STEEL FOR ONE GDR

BAR	NUMBER	SIZE	TYPE	LENGTH	WEIGHT
S1	262	#4	1	7'-0"	1225
S2	32	#5	1	7'-0"	234
S3	14	#4	2	8'-5"	79
S4	116	#4	3	3'-2"	245
S6	116	#5	4	4'-6"	544
*S7	30	#5	STR	3'-8"	115
S8	2	#5	2	9'-0"	19
S9	117	#5	STR	3'-3"	397
S10	2	#3	STR	1'-10"	1
S11	8	#5	5	11'-10"	99
S12	16	#4	STR	8'-0"	86

\* NOTE: S7 BARS SHALL BE BENT BEFORE SHIPMENT. HEAT BENDING SHALL NOT BE ALLOWED.



QUANTITIES FOR ONE GIRDER

REINFORCING STEEL	9000 PSI CONCRETE	0.6" Ø L.R. STRANDS
LB.	C.Y.	No.
3044	29.2	46

GIRDERS REQUIRED

NUMBER	LENGTH	TOTAL LENGTH
4	128'-2 1/8"	512'-8 1/2"

PROJECT NO. R-2707C  
 CLEVELAND COUNTY  
 STATION: 384+50.00 -L-  
 SHEET 1 OF 4



STATE OF NORTH CAROLINA  
 DEPARTMENT OF TRANSPORTATION  
 RALEIGH  
 SUPERSTRUCTURE  
 74" PRESTRESSED CONCRETE  
 MODIFIED BULB TEE  
 CONTINUOUS FOR LIVE LOAD  
 SPAN A  
 RIGHT LANE

REVISIONS

NO.	BY:	DATE:	NO.	BY:	DATE:
1			3		
2			4		

SHEET NO. S2-11  
 TOTAL SHEETS 36

DRAWN BY: PDS DATE: 11/2016  
 CHECKED BY: TLC DATE: 01/2017  
 DESIGN ENGINEER OF RECORD: MAL DATE: 11/2016

DOCUMENT NOT CONSIDERED FINAL UNLESS ALL SIGNATURES COMPLETED