

NOTES

FOR SPLICE LENGTHS NOT SHOWN, REFER TO MINIMUM SPLICE LENGTH TABLE ON "SUPERSTRUCTURE BILL OF MATERIAL" SHEET 1 OF 2.

FOR END BENT DIAPHRAGM BARS AND BENT DIAPHRAGM BARS, SEE "TYPICAL SECTION DETAILS" SHEET 2 OF 2.

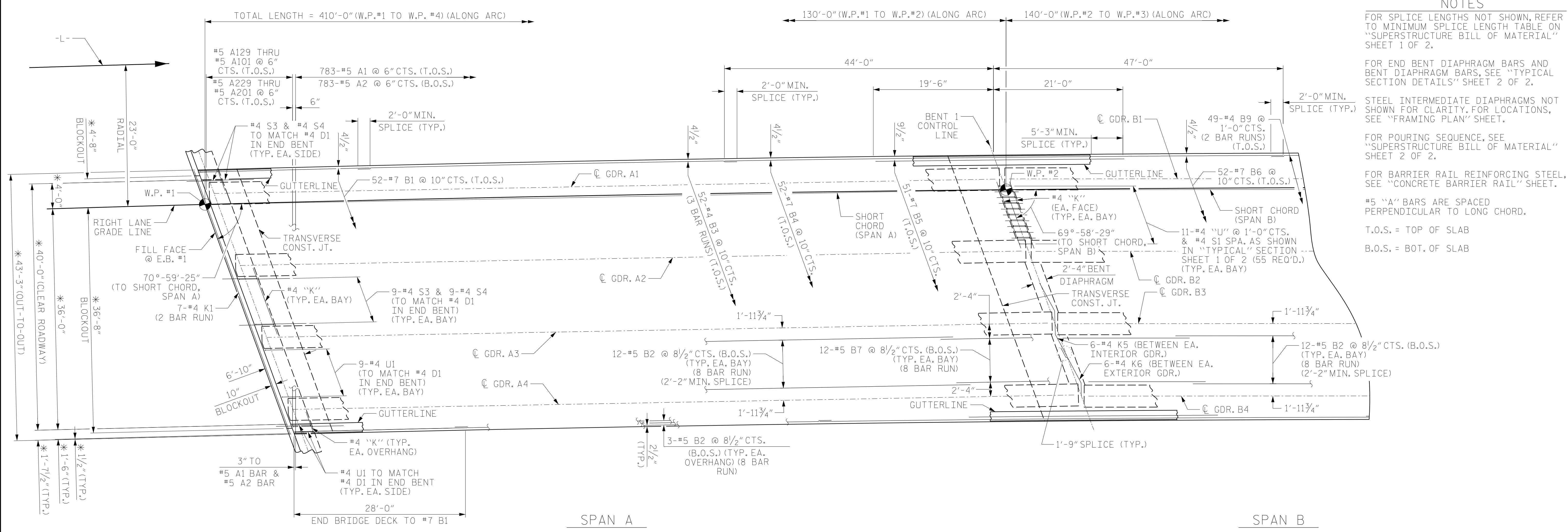
STEEL INTERMEDIATE DIAPHRAGMS NOT SHOWN FOR CLARITY, FOR LOCATIONS, SEE "FRAMING PLAN" SHEET.

FOR POURING SEQUENCE, SEE "SUPERSTRUCTURE BILL OF MATERIAL" SHEET 2 OF 2.

FOR BARRIER RAIL REINFORCING STEEL, SEE "CONCRETE BARRIER RAIL" SHEET.

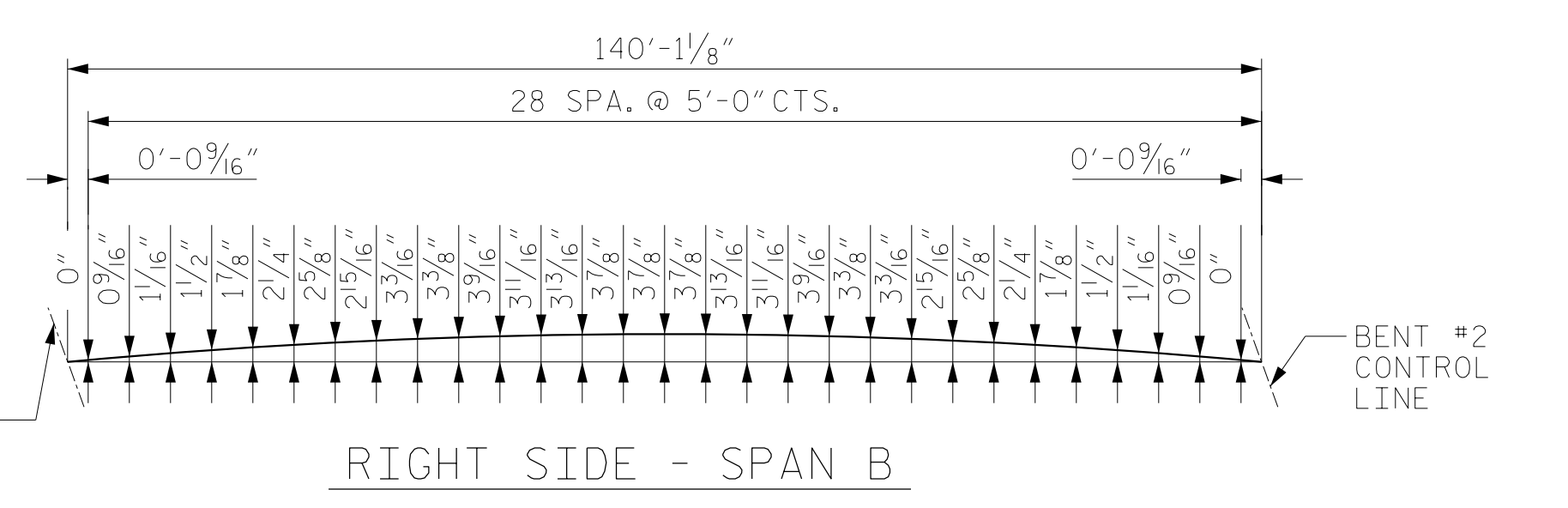
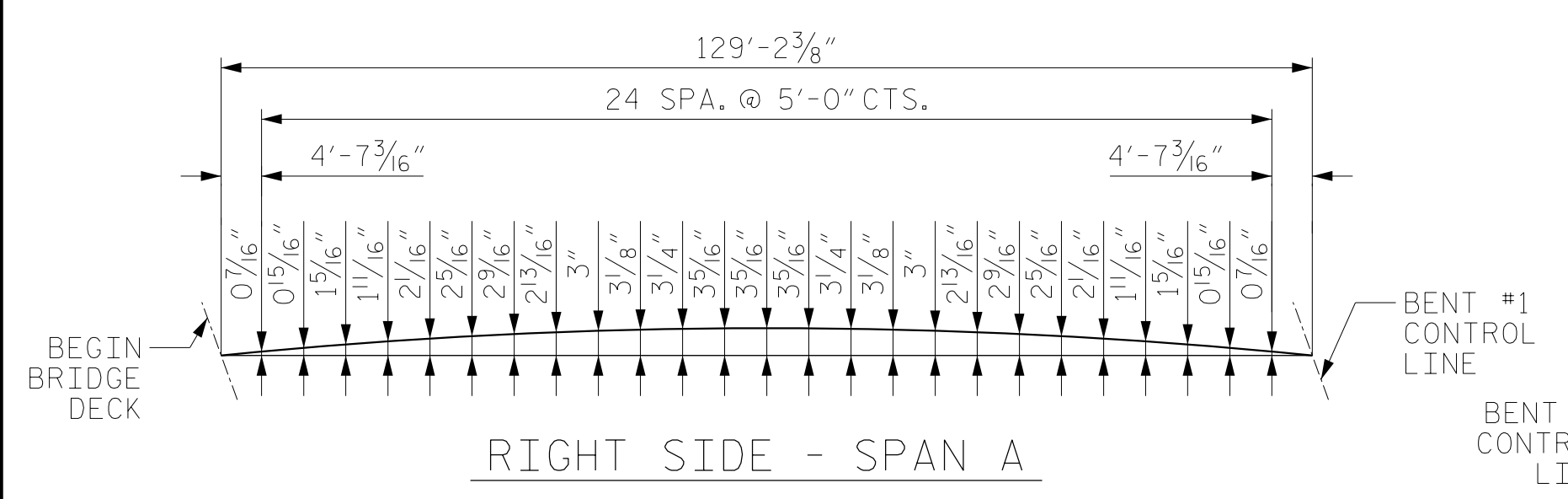
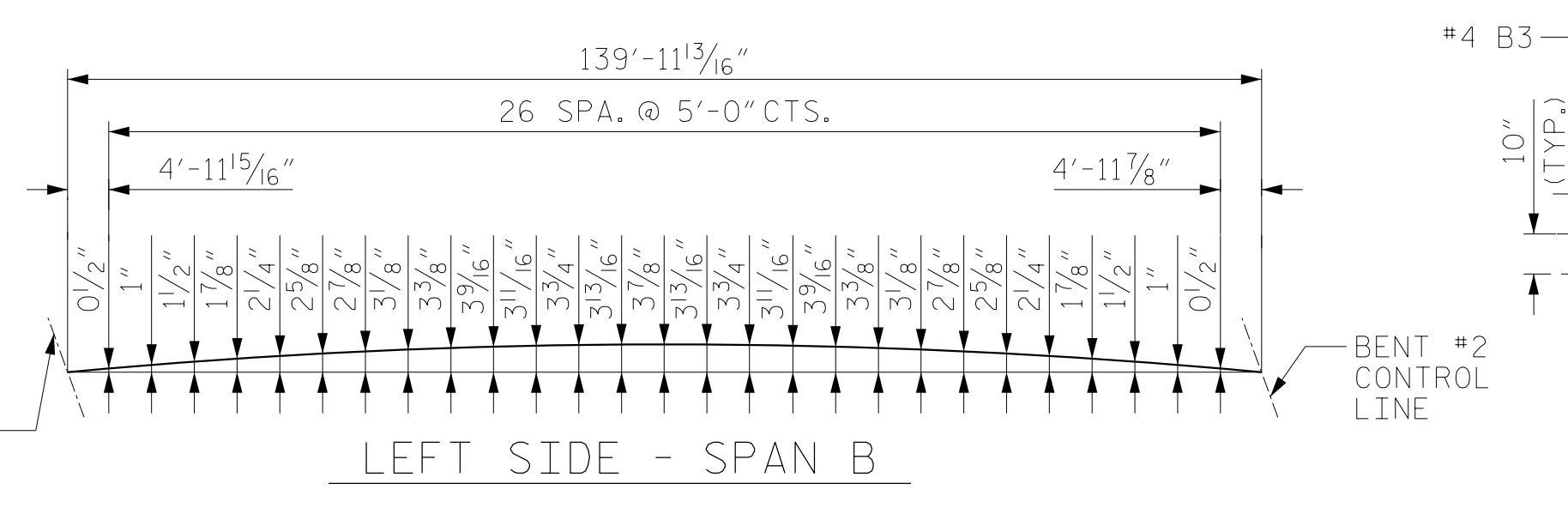
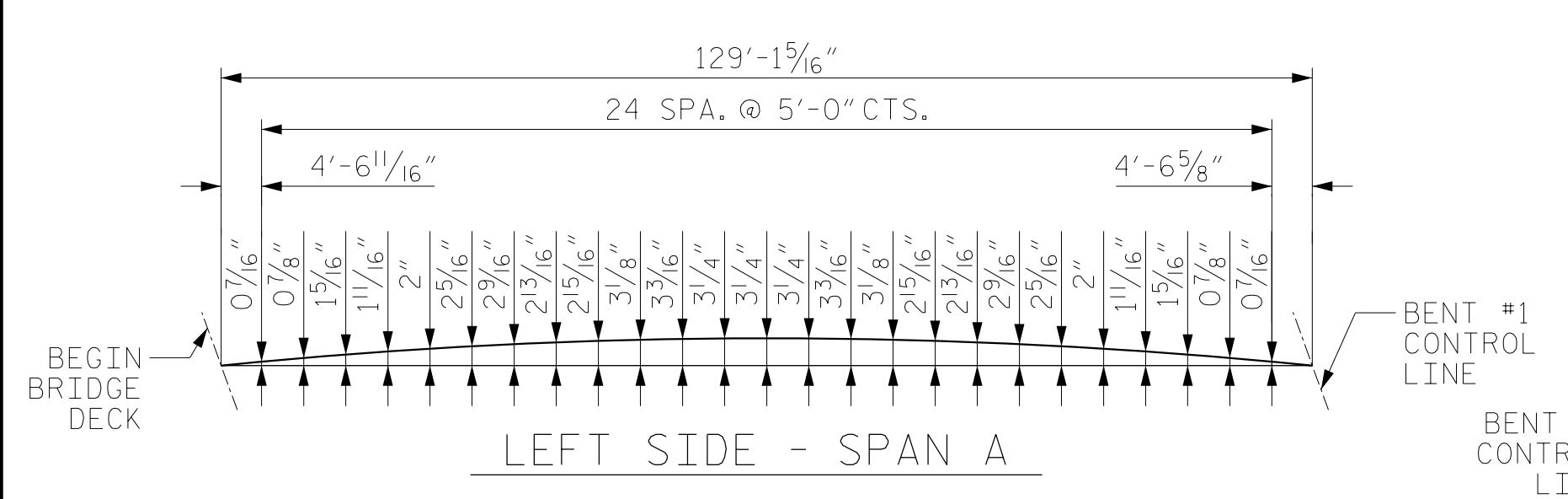
#5 "A" BARS ARE SPACED PERPENDICULAR TO LONG CHORD.

T.O.S. = TOP OF SLAB
B.O.S. = BOT. OF SLAB

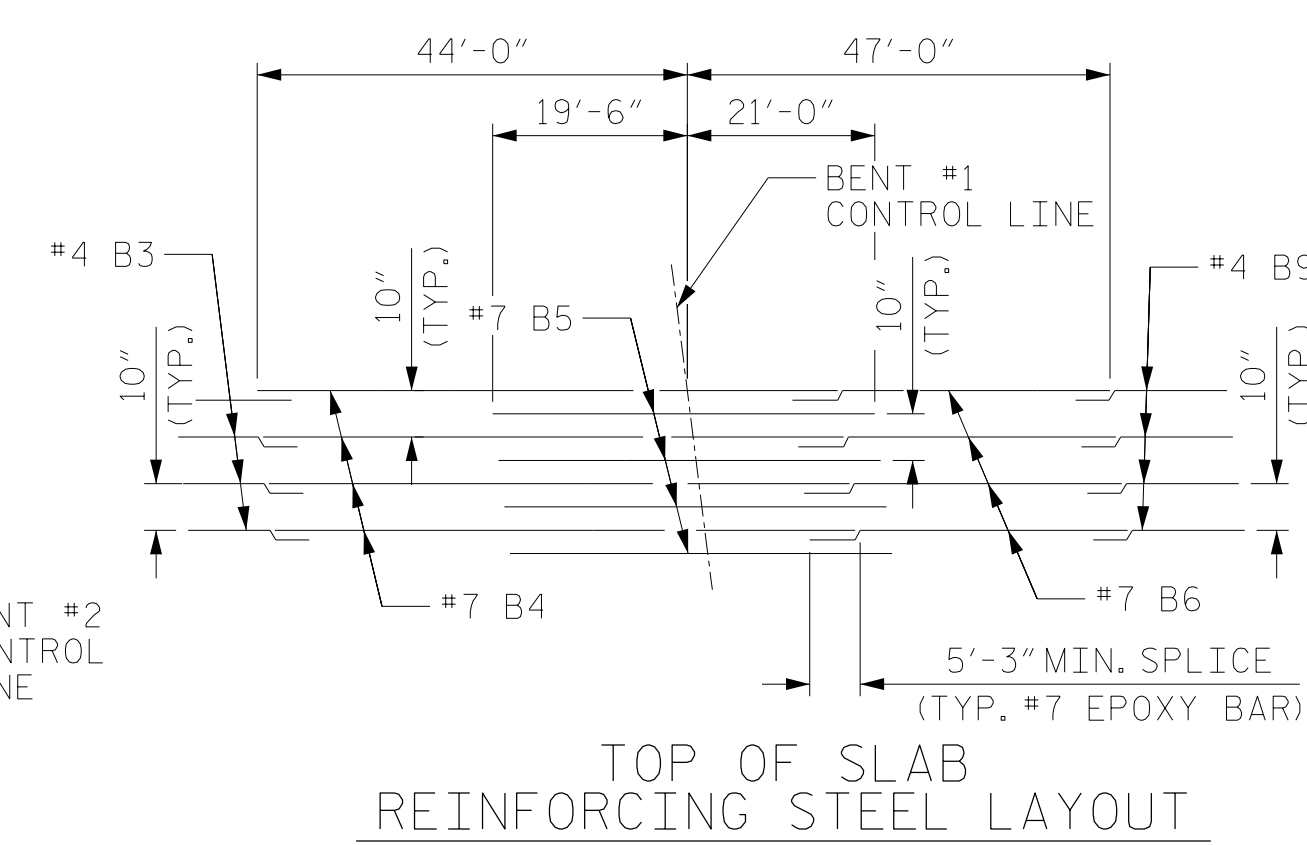
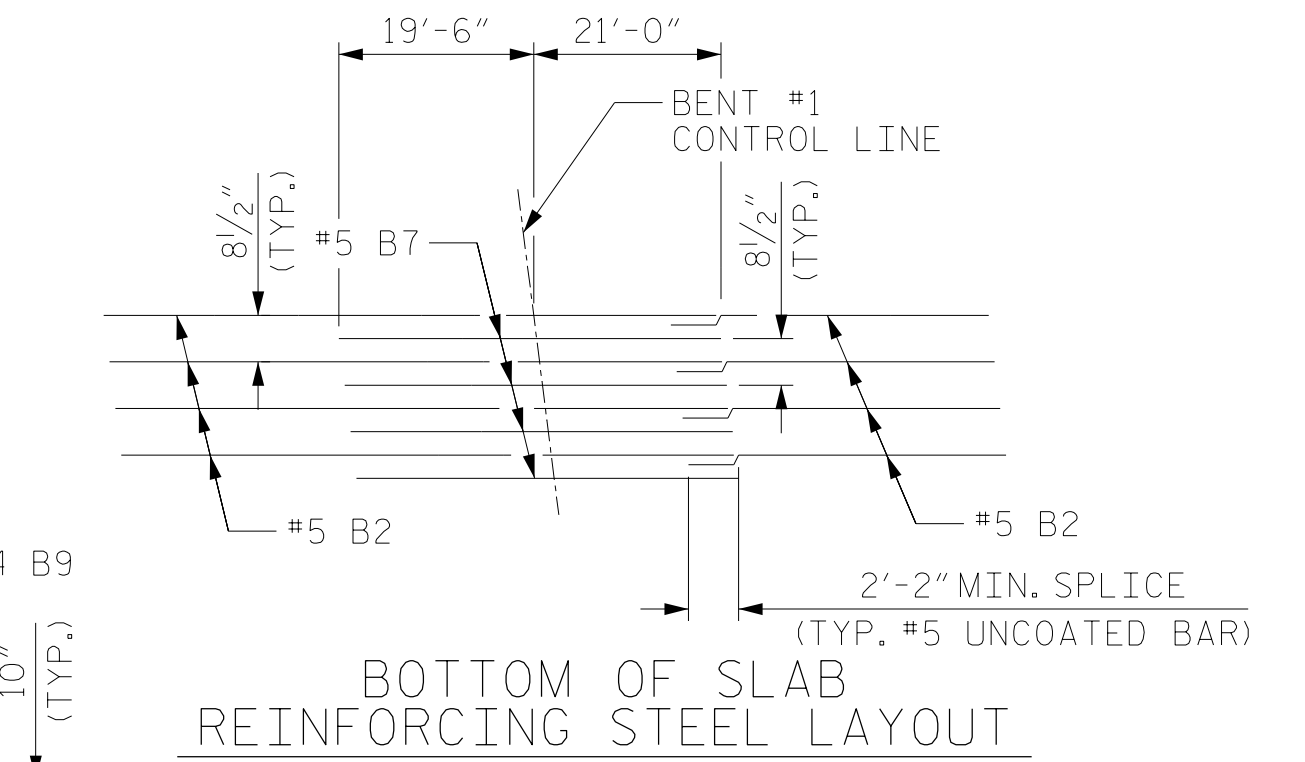


PARTIAL PLAN OF SPANS

* RADIAL DIMENSIONS



ARC OFFSETS



PROJECT NO. R-2707C
CLEVELAND COUNTY
STATION: 384+50.00 -L-

SHEET 1 OF 2



STATE OF NORTH CAROLINA
DEPARTMENT OF TRANSPORTATION
RALEIGH
SUPERSTRUCTURE
PLAN OF SPANS
RIGHT LANE

DRAWN BY: PDS DATE: 12/2016
CHECKED BY: TLC DATE: 01/2017
DESIGN ENGINEER OF RECORD: MAL DATE: 12/2016

DOCUMENT NOT CONSIDERED
FINAL UNLESS ALL
SIGNATURES COMPLETED

RS&H Architects-Engineers-Planners, Inc.
8601 Six Forks Road, Suite 260
Raleigh, NC 27615
919-926-4100 FAX 919-846-9080
www.rsandh.com
North Carolina License No. 00793-7-0403-1-C&E

REVISIONS						SHEET NO.
NO.	BY:	DATE:	NO.	BY:	DATE:	S2-8
1			3			TOTAL SHEETS
2			4			36