

MINIMUM OF 3-ONE CUBIC FOOT BAGS OF #78M STONE. BAGS SHALL BE OF POROUS FABRIC, SECURELY TIED.

6" (MIN.) PIPE FOR DRAINAGE

GRADE TO DRAIN

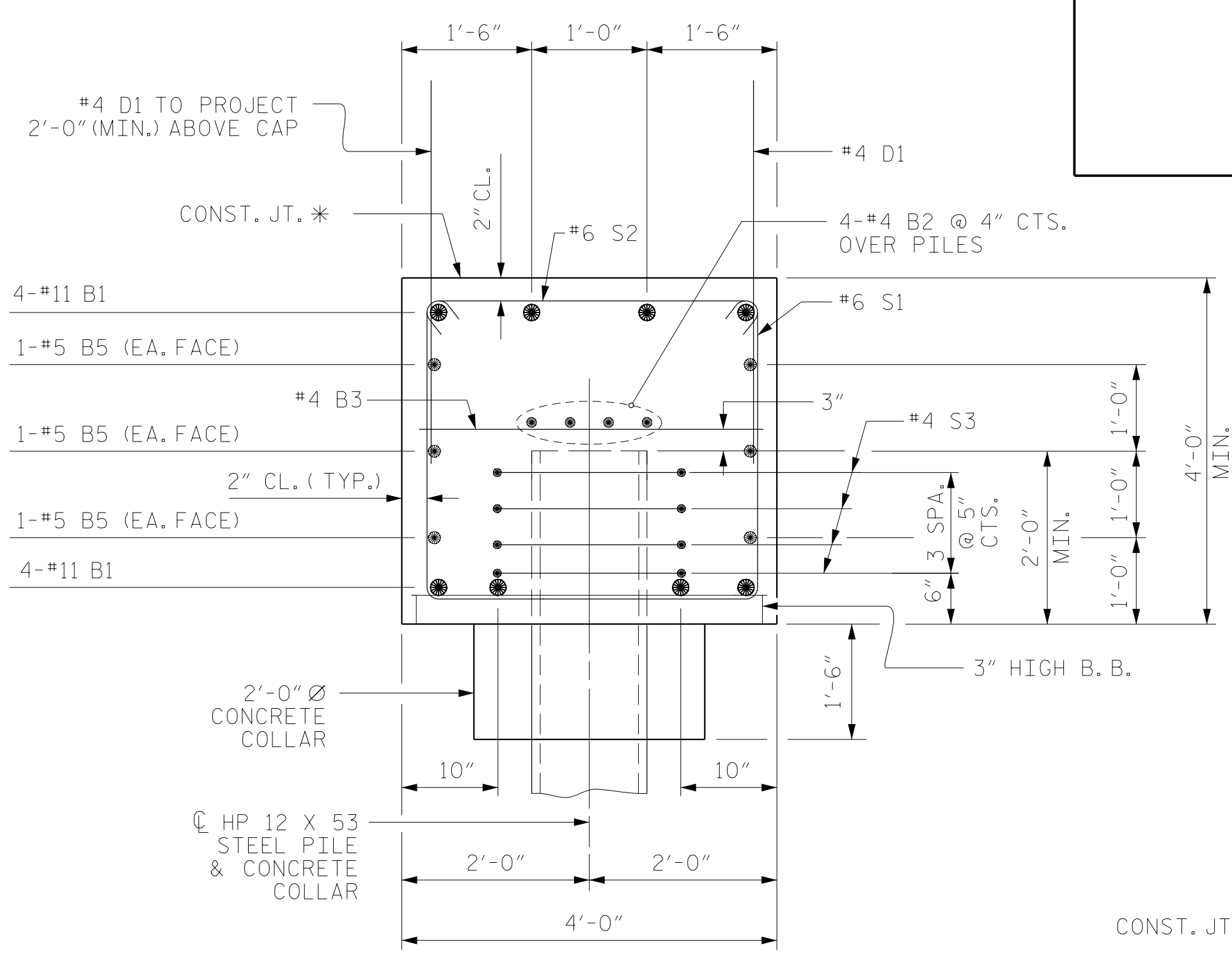
TOE OF SLOPE

BAGGED STONE AND PIPE SHALL BE PLACED IMMEDIATELY AFTER COMPLETION OF END BENT EXCAVATION. PIPE MAY BE EITHER CONCRETE, CORRUGATED STEEL, CORRUGATED ALUMINUM ALLOY, OR CORRUGATED PLASTIC. PERFORATED PIPE WILL NOT BE ALLOWED.

BAGGED STONE SHALL REMAIN IN PLACE UNTIL THE ENGINEER DIRECTS THAT IT BE REMOVED. THE CONTRACTOR SHALL REMOVE AND DISPOSE OF SILT ACCUMULATIONS AT BAGGED STONE WHEN SO DIRECTED BY THE ENGINEER. BAGS SHALL BE REMOVED AND REPLACED WHENEVER THE ENGINEER DETERMINES THAT THEY HAVE DETERIORATED AND LOST THEIR EFFECTIVENESS.

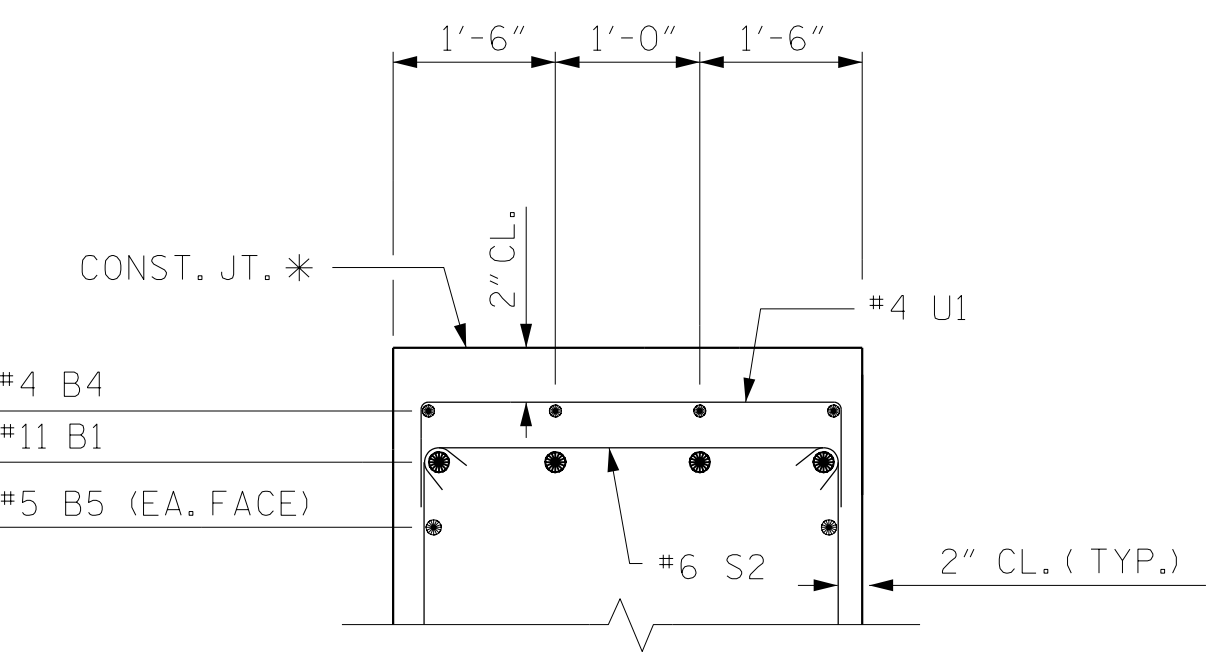
NO SEPARATE PAYMENT WILL BE MADE FOR THIS WORK AND THE ENTIRE COST OF THIS WORK SHALL BE INCLUDED IN THE UNIT CONTRACT PRICE BID FOR THE SEVERAL PAY ITEMS.

TEMPORARY DRAINAGE AT END BENT



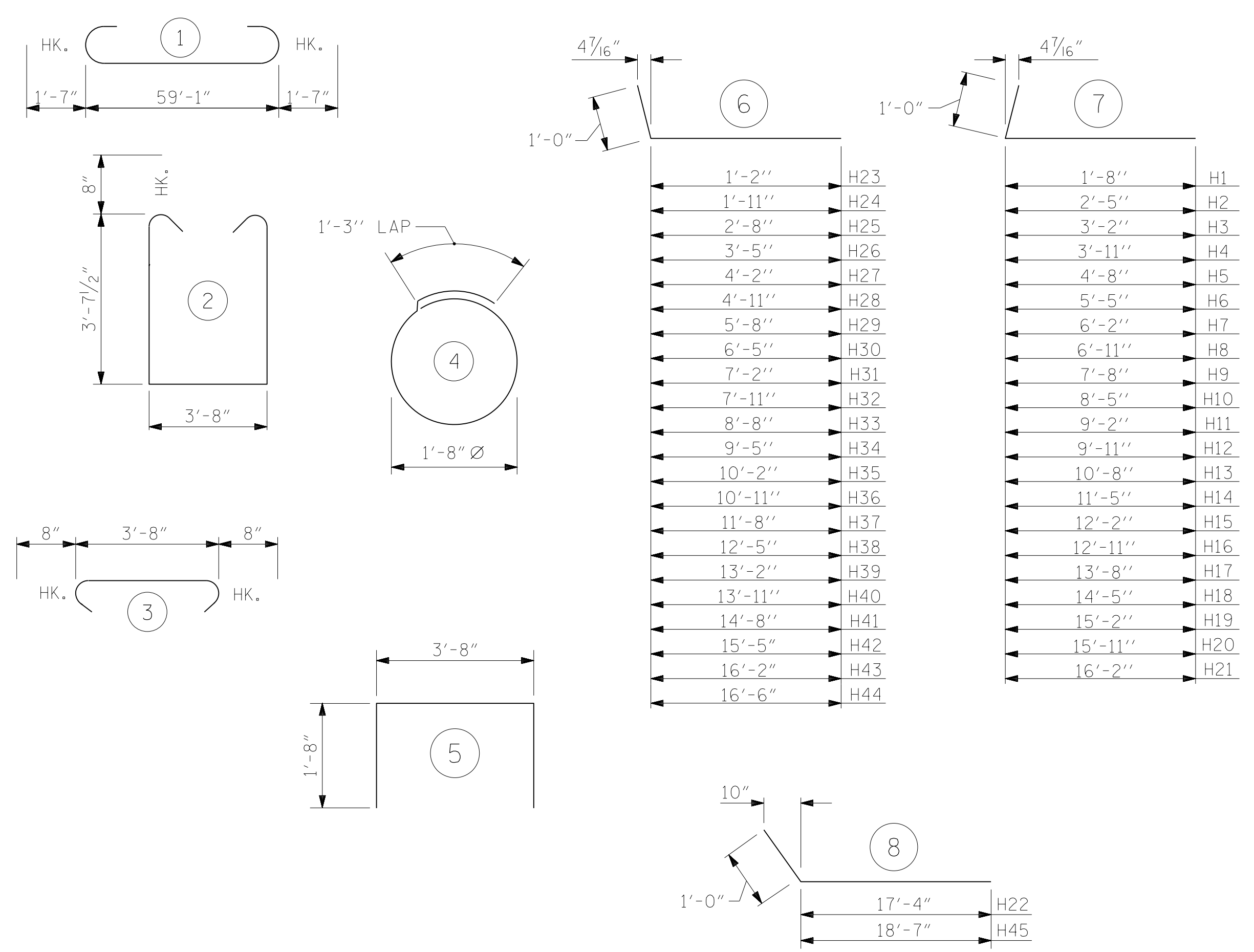
SECTION A-A

* THE TOP SURFACE OF THE END BENT CAP & WINGS, EXCLUDING THE BEARING AREA, SHALL BE RAKED TO A DEPTH OF 1/4".



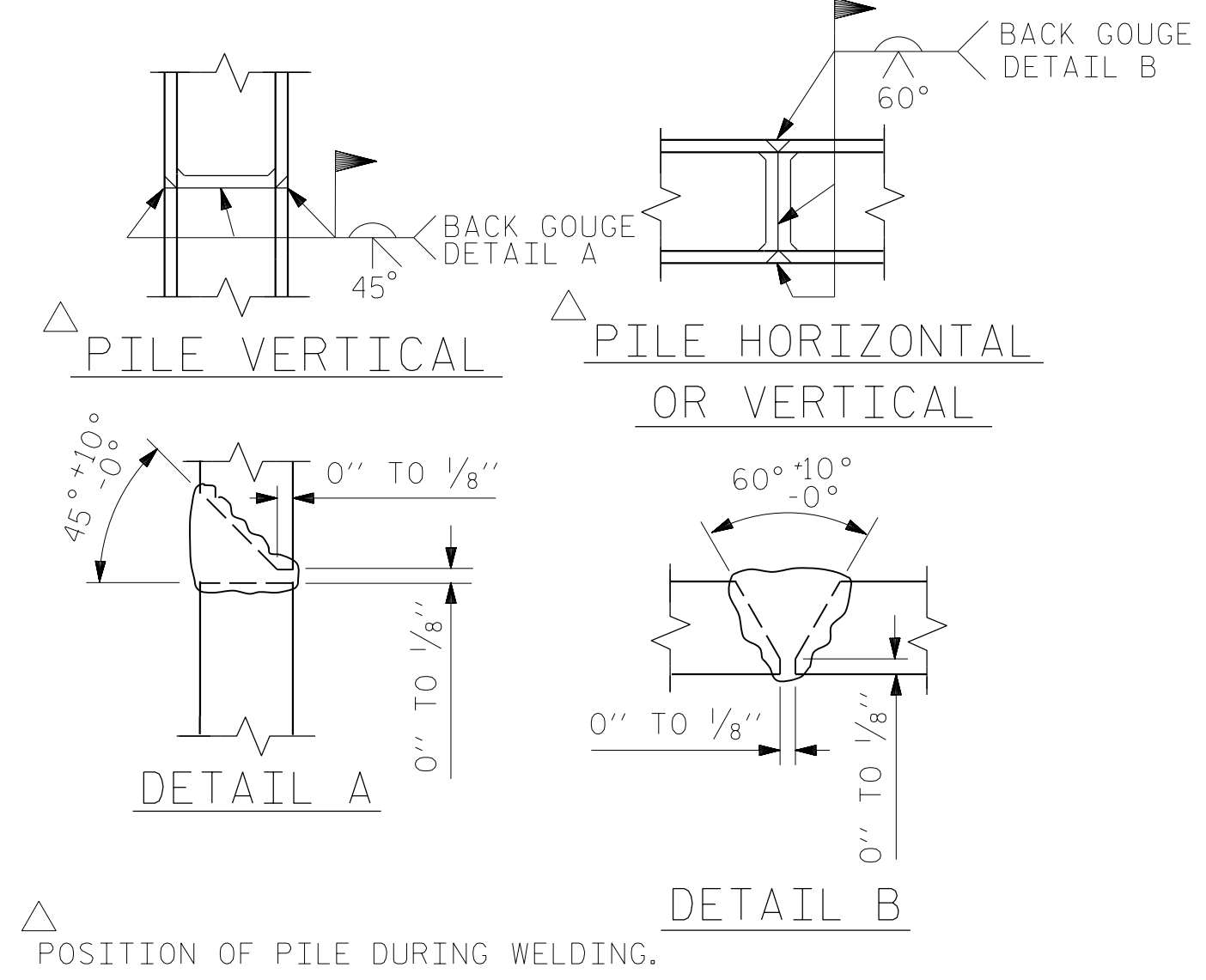
PARTIAL SECTION B-B

BAR TYPES



ALL BAR DIMENSIONS ARE OUT TO OUT.

BILL OF MATERIAL											
END BENT NO. 2											
BAR	NO.	SIZE	TYPE	LENGTH	WEIGHT	BAR	NO.	SIZE	TYPE	LENGTH	WEIGHT
B1	8	#11	1	62'-3"	2646	H42	2	#6	6	16'-5"	49
B2	8	#4	STR	30'-0"	160	H43	2	#6	6	17'-2"	52
B3	14	#4	STR	3'-8"	34	H44	8	#6	6	17'-6"	210
B4	4	#4	STR	10'-0"	27	H45	2	#6	8	19'-7"	59
B5	6	#5	STR	59'-1"	370						
						K1	16	#4	STR	3'-0"	32
D1	94	#4	STR	4'-0"	251	K2	16	#4	STR	2'-9"	29
H1	2	#6	7	2'-8"	8	S1	85	#6	2	12'-3"	1564
H2	2	#6	7	3'-5"	10	S2	85	#6	3	5'-0"	638
H3	2	#6	7	4'-2"	13	S3	48	#4	4	6'-6"	208
H4	2	#6	7	4'-11"	15						
H5	2	#6	7	5'-8"	17	U1	7	#4	5	7'-0"	33
H6	2	#6	7	6'-5"	19						
H7	2	#6	7	7'-2"	22	V1	26	#6	STR	11'-8"	456
H8	2	#6	7	7'-11"	24	V2	4	#6	STR	11'-7"	70
H9	2	#6	7	8'-8"	26	V3	4	#6	STR	11'-3"	68
H10	2	#6	7	9'-5"	28	V4	4	#6	STR	10'-11"	66
H11	2	#6	7	10'-2"	31	V5	4	#6	STR	10'-7"	64
H12	2	#6	7	10'-11"	33	V6	4	#6	STR	10'-3"	62
H13	2	#6	7	11'-8"	35	V7	4	#6	STR	9'-11"	60
H14	2	#6	7	12'-5"	37	V8	4	#6	STR	9'-7"	58
H15	2	#6	7	13'-2"	40	V9	4	#6	STR	9'-3"	56
H16	2	#6	7	13'-11"	42	V10	4	#6	STR	8'-11"	54
H17	2	#6	7	14'-8"	44	V11	4	#6	STR	8'-7"	52
H18	2	#6	7	15'-5"	46	V12	4	#6	STR	8'-3"	50
H19	2	#6	7	16'-2"	49	V13	8	#6	STR	7'-7"	91
H20	2	#6	7	16'-11"	51	V14	4	#6	STR	7'-3"	44
H21	8	#6	7	17'-2"	206	V15	4	#6	STR	6'-11"	42
H22	2	#6	8	18'-4"	55	V16	4	#6	STR	6'-7"	40
H23	2	#6	6	2'-2"	7	V17	4	#6	STR	6'-3"	38
H24	2	#6	6	2'-11"	9	V18	4	#6	STR	5'-11"	36
H25	2	#6	6	3'-8"	11	V19	4	#6	STR	5'-7"	34
H26	2	#6	6	4'-5"	13	V20	4	#6	STR	5'-3"	32
H27	2	#6	6	5'-2"	16	V21	4	#6	STR	4'-11"	30
H28	2	#6	6	5'-11"	18	V22	4	#6	STR	4'-7"	28
H29	2	#6	6	6'-8"	20	V23	4	#6	STR	4'-3"	26
H30	2	#6	6	7'-5"	22	V24	4	#6	STR	3'-11"	24
H31	2	#6	6	8'-2"	25	V25	4	#6	STR	3'-7"	22
H32	2	#6	6	8'-11"	27	V26	4	#6	STR	3'-3"	20
H33	2	#6	6	9'-8"	29	V27	4	#6	STR	2'-11"	18
H34	2	#6	6	10'-5"	31	V28	4	#6	STR	2'-7"	16
H35	2	#6	6	11'-2"	34	V29	4	#6	STR	2'-3"	14
H36	2	#6	6	11'-11"	36	V30	4	#6	STR	1'-11"	12
H37	2	#6	6	12'-8"	38	V31	2	#6	STR	1'-10"	6
H38	2	#6	6	13'-5"	40						
H39	2	#6	6	14'-2"	43						
H40	2	#6	6	14'-11"	45						
H41	2	#6	6	15'-8"	47						
REINFORCING STEEL										9,413	LBS.
CLASS A CONCRETE											
POUR #1											
CAP, CONCRETE COLLARS & LOWER PART OF WINGS										41.4	C. Y.
POUR #2											
UPPER PART OF WINGS										11.3	C. Y.
TOTAL										52.2	C. Y.
HP 12 X 53 STEEL PILES											
NO. 12										240	LIN. FT.
STEEL PILE POINTS											
										NO.: 12	



PILE SPLICE DETAILS

PROJECT NO. R-2707C

CLEVELAND COUNTY

STATION: 384+50.00 -L-

SHEET 4 OF 4



STATE OF NORTH CAROLINA					
DEPARTMENT OF TRANSPORTATION					
RALEIGH					
SUBSTRUCTURE					
INTEGRAL					
END BENT NO. 2					
LEFT LANE					
REVISIONS					
NO.	BY:	DATE:	NO.	BY:	DATE:
1			3		
2			4		

SHEET NO.	
S1-34	TOTAL SHEETS
36	

DRAWN BY: MAL DATE: 11/2016

CHECKED BY: JMR DATE: 12/2016

DESIGN ENGINEER OF RECORD: MAL DATE: 11/2016

DOCUMENT NOT CONSIDERED FINAL UNLESS ALL SIGNATURES COMPLETED