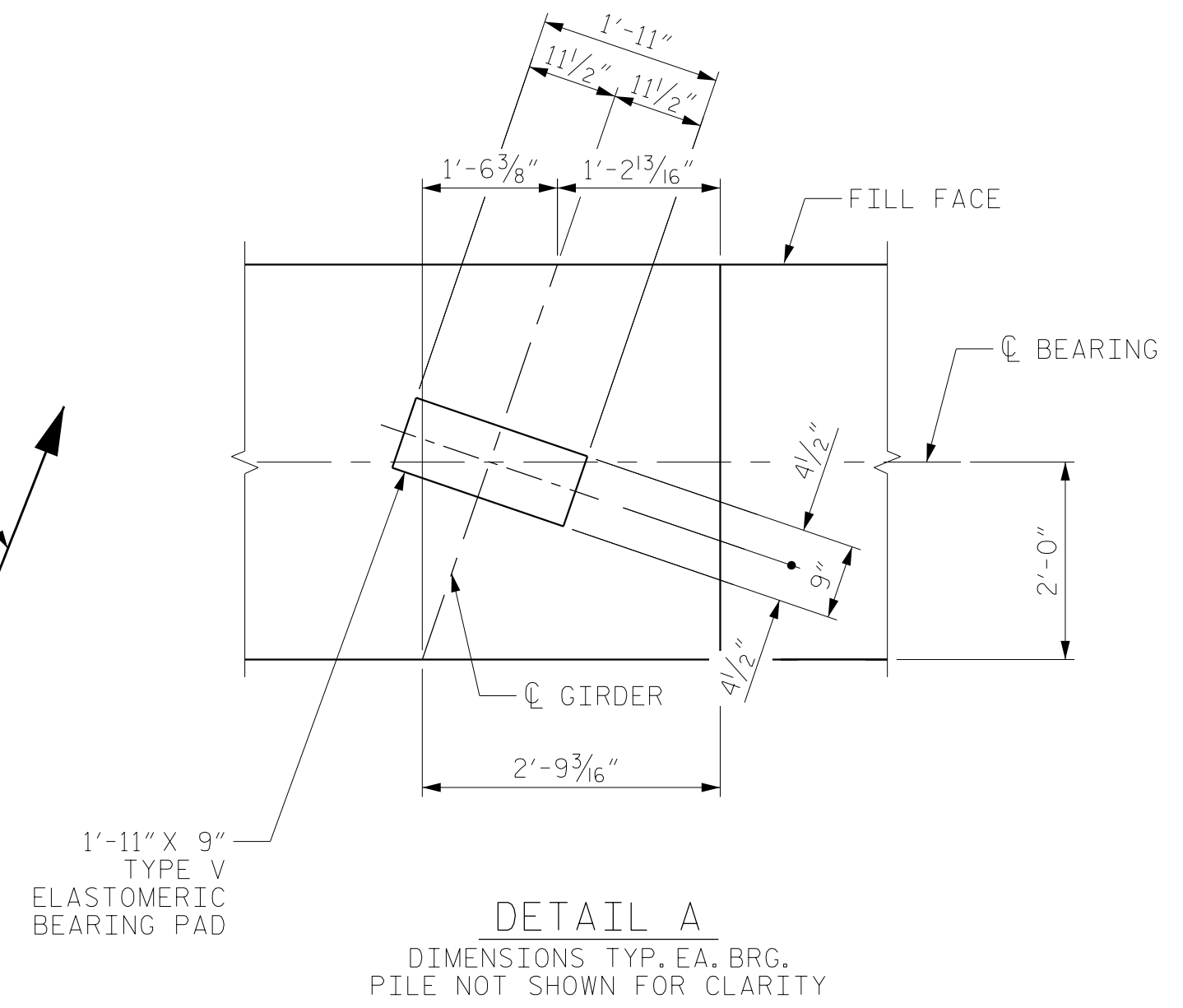
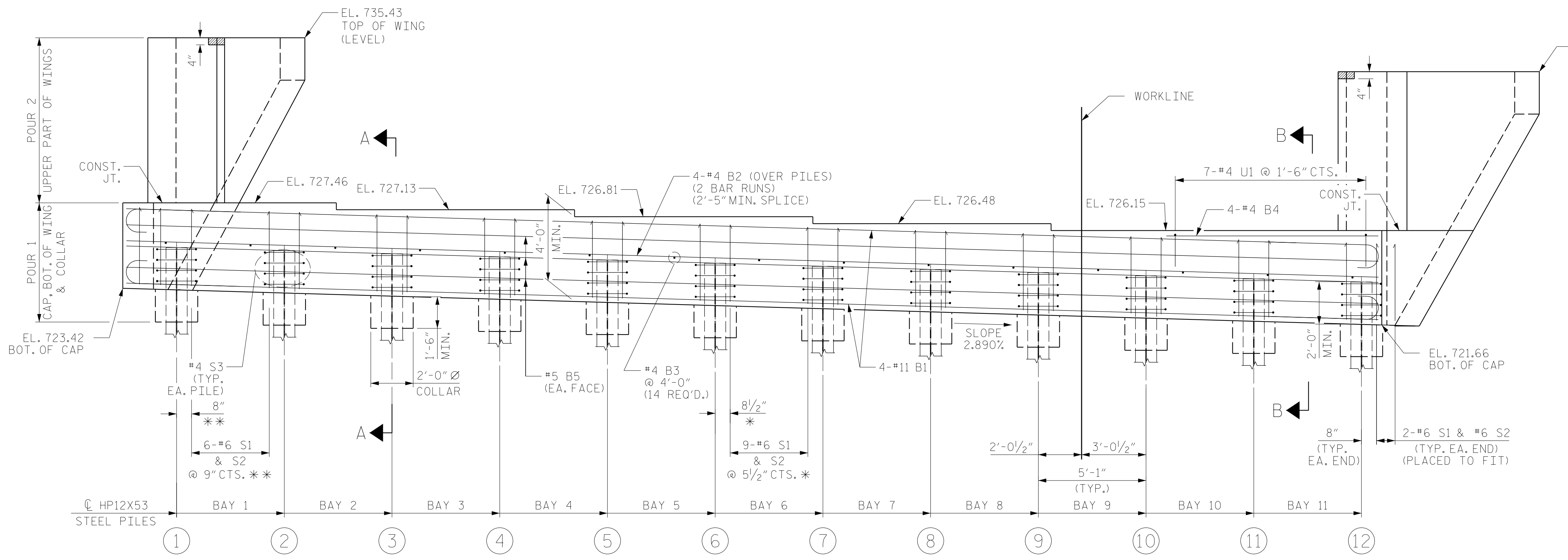


PLAN
LLGL = LEFT LANE GRADE LINE

NOTES:
 THE CONTRACTOR SHALL PROVIDE FOR INSTALLATION OF THE 4" DIAMETER DRAIN PIPE THROUGH THE WING WALL AS REQUIRED FOR REINFORCED BRIDGE APPROACH FILLS. SEE THE ROADWAY PLANS. REINFORCING STEEL IN THE WING WALL MAY BE SHIFTED AS NECESSARY TO CLEAR THE DRAIN PIPE.
 FOR SECTION A-A AND SECTION B-B, SEE SHEET 4 OF 4.
 STIRRUPS MAY BE SHIFTED SLIGHTLY TO AVOID #4 DI BARS IN CAP.
 SEE SUPERSTRUCTURE SHEETS FOR UPPER PART OF INTEGRAL END BENT DETAILS.
 THE CONCRETE IN THE SHADED AREA OF THE WING SHALL BE POURED AFTER THE CONCRETE BARRIER IS CAST IF SLIP FORMING IS USED.



DETAIL A
DIMENSIONS TYP. EA. BRG. PILE NOT SHOWN FOR CLARITY



ELEVATION

* = TYPICAL BAY 4 THRU BAY 8
 ** = TYPICAL BAY 1 THRU BAY 3 AND BAY 9 THRU BAY 11

TOP OF PILE ELEVATIONS	
PILE	ELEVATION
1	725.37
2	725.22
3	725.07
4	724.93
5	724.78
6	724.63
7	724.48
8	724.33
9	724.18
10	724.04
11	723.89
12	723.74

PROJECT NO. R-2707C
CLEVELAND COUNTY
 STATION: 384+50.00 -L-
 SHEET 1 OF 4



STATE OF NORTH CAROLINA DEPARTMENT OF TRANSPORTATION RALEIGH					
SUBSTRUCTURE INTEGRAL END BENT NO. 2 LEFT LANE					
REVISIONS					
NO.	BY:	DATE:	NO.	BY:	DATE:
1			3		
2			4		

DRAWN BY: MAL DATE: 11/2016
 CHECKED BY: JMR DATE: 12/2016
 DESIGN ENGINEER OF RECORD: MAL DATE: 11/2016

DOCUMENT NOT CONSIDERED
 FINAL UNLESS ALL
 SIGNATURES COMPLETED