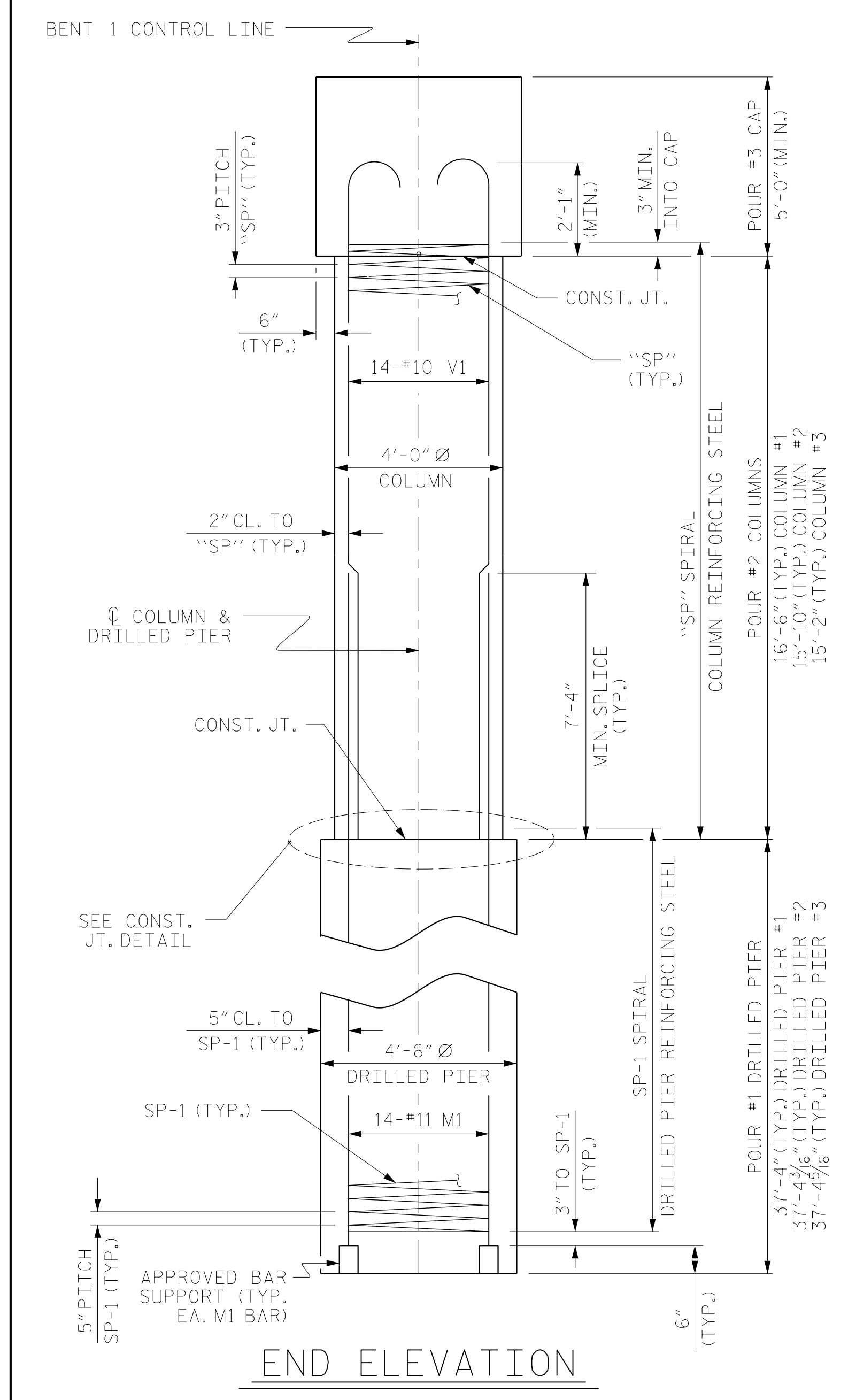
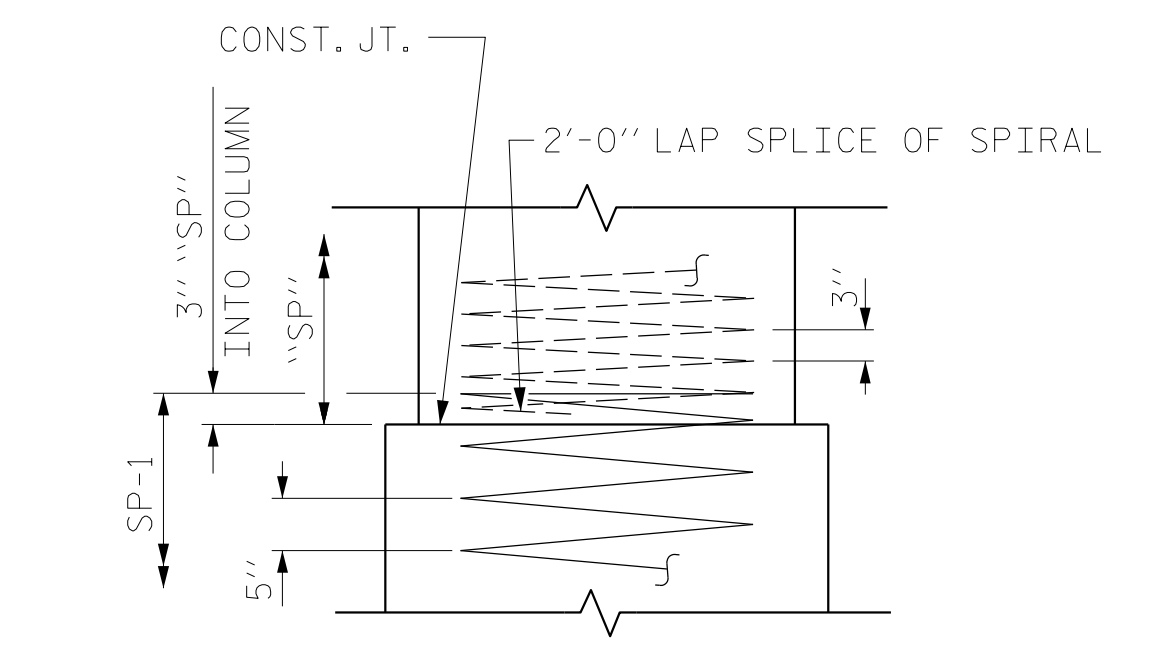


PLAN OF DRILLED PIERS & COLUMNS

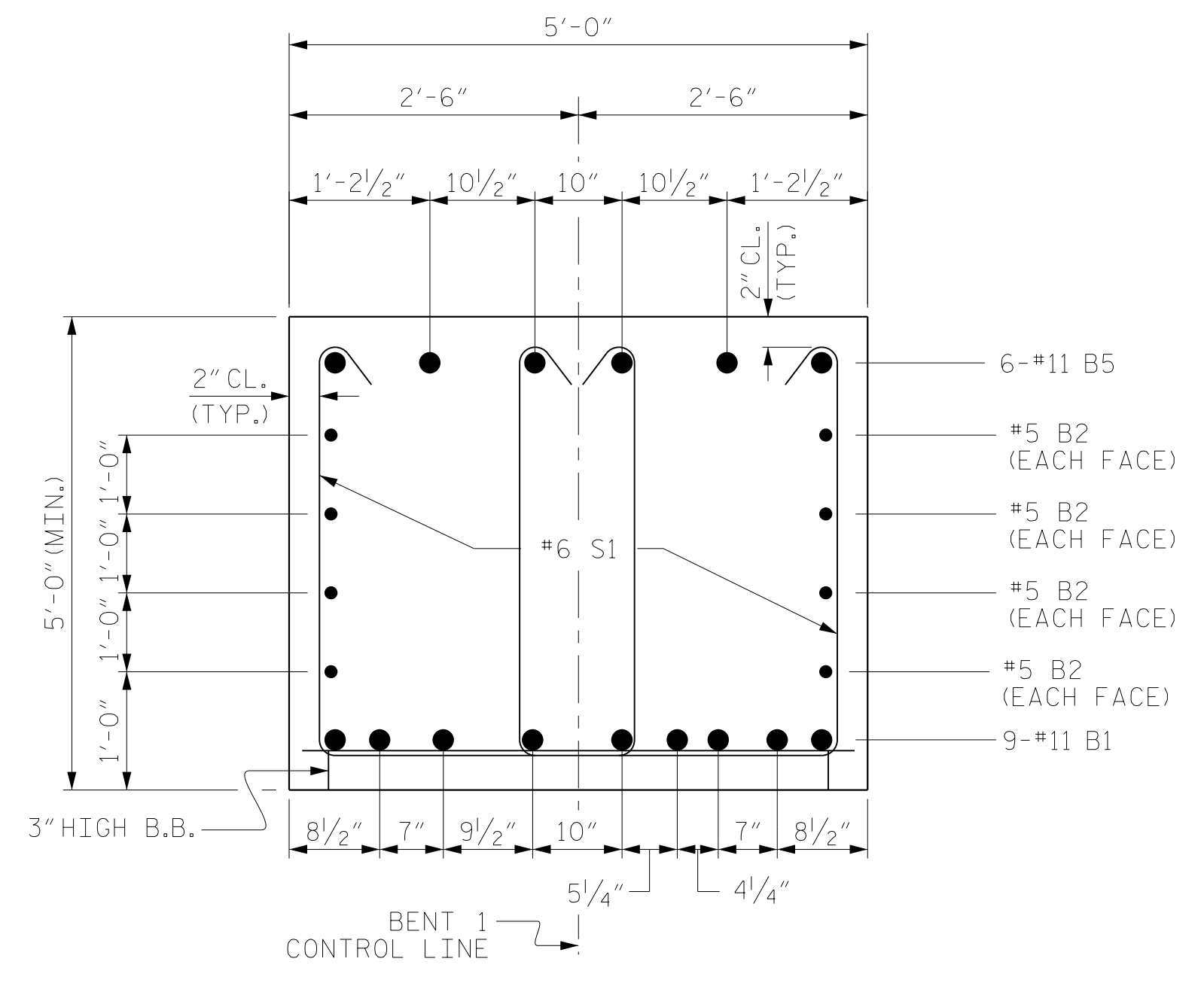
LLGL = LEFT LANE GRADE LINE



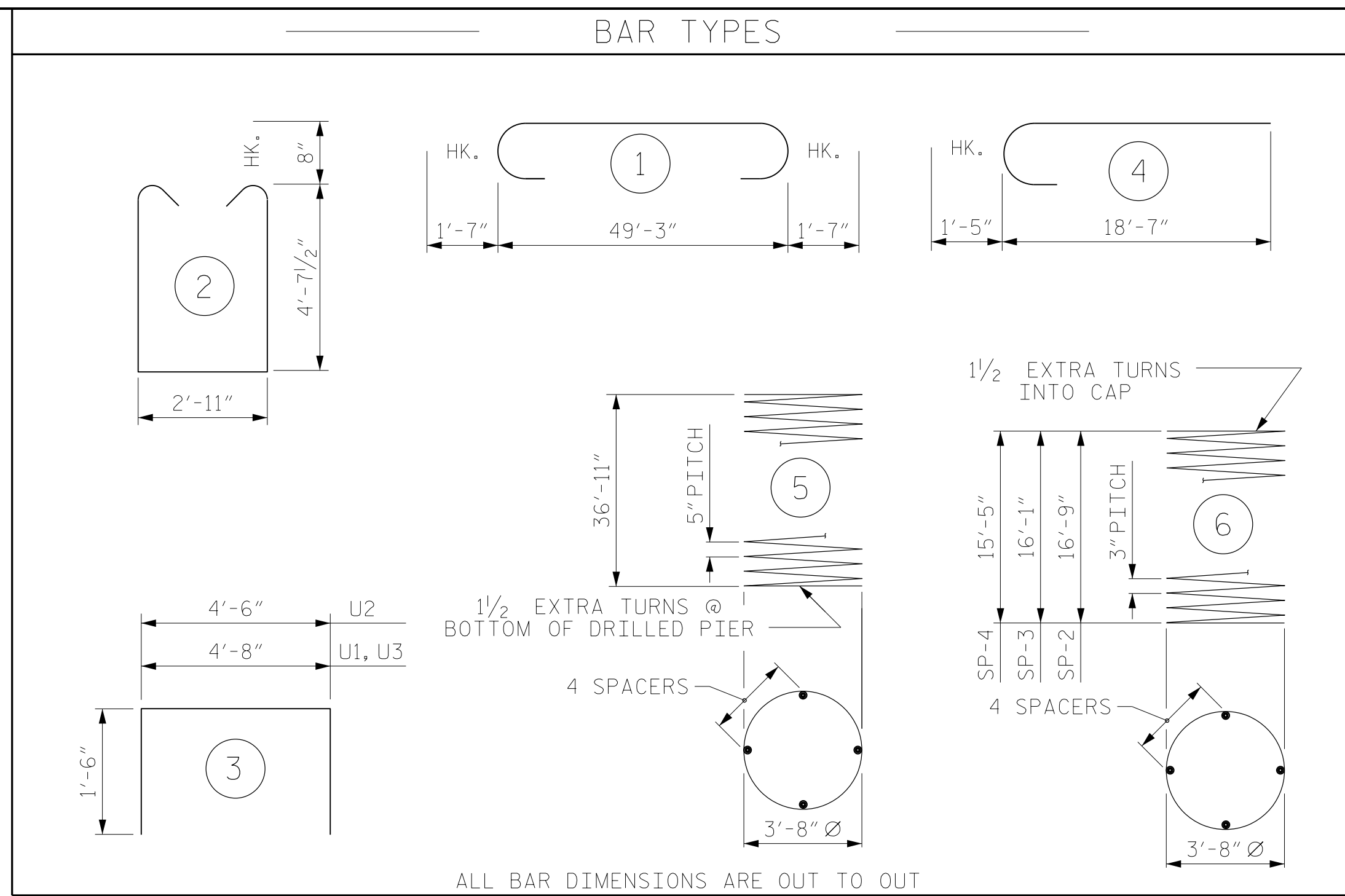
END ELEVATION



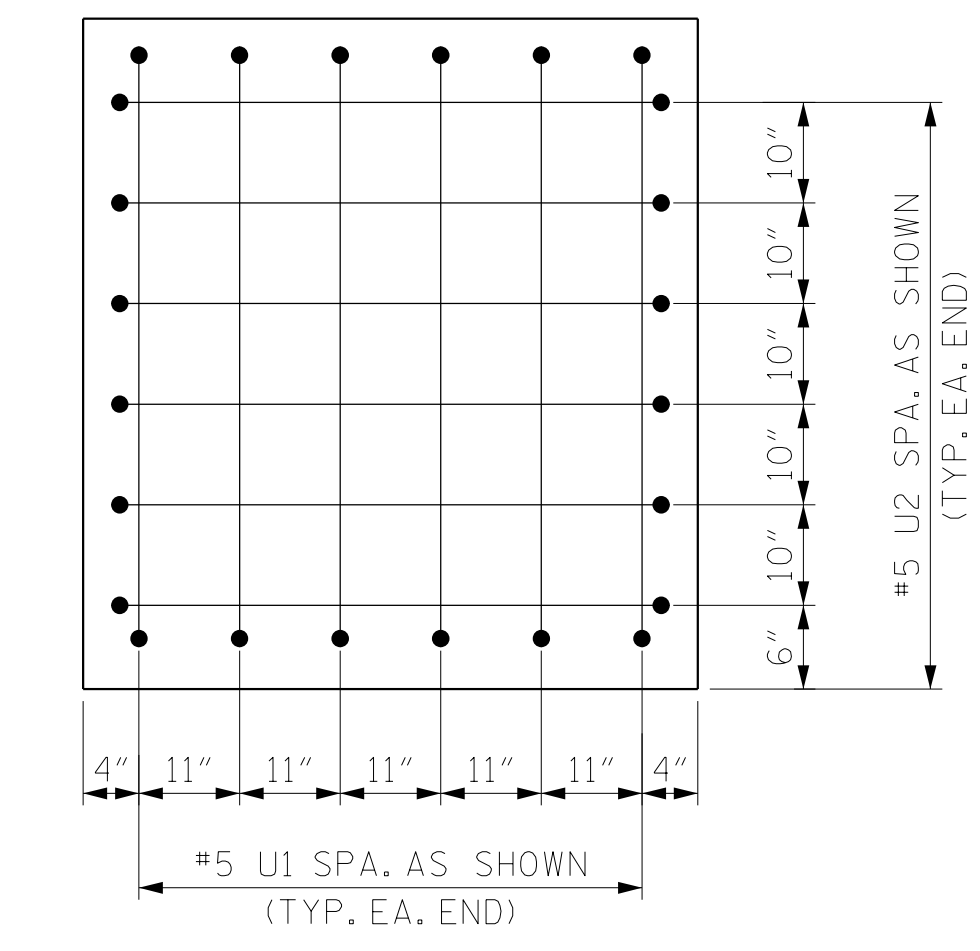
CONSTRUCTION JOINT DETAIL



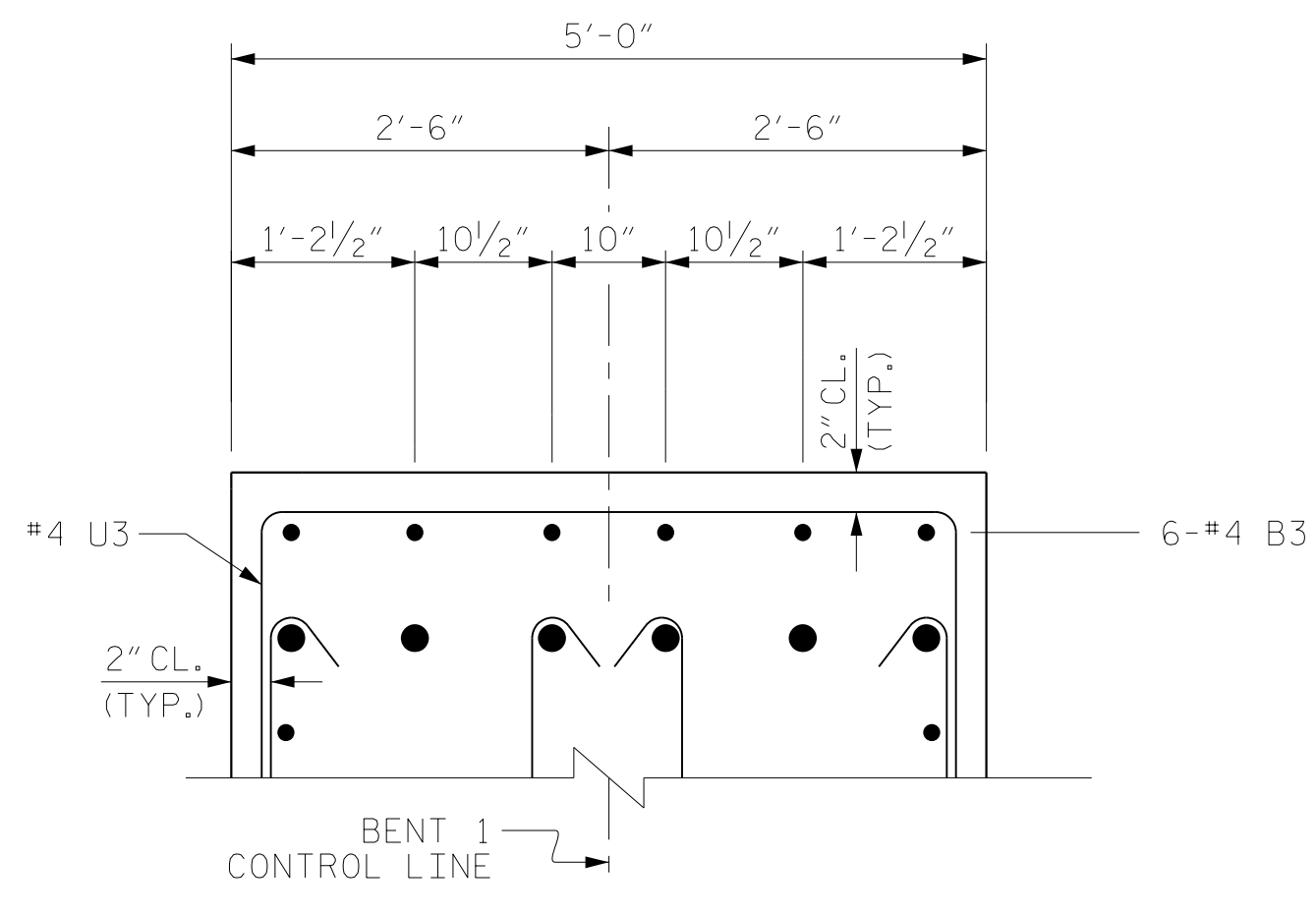
SECTION A-A



ALL BAR DIMENSIONS ARE OUT TO OUT



END OF CAP VIEW
(TYPICAL BOTH ENDS)



VIEW B-B

BILL OF MATERIAL FOR BENT 1

BAR	NO.	SIZE	TYPE	LENGTH	WEIGHT
B1	9	#11	STR	49'-3"	2355
B2	8	#5	STR	49'-3"	411
B3	6	#4	STR	6'-0"	24
B4	30	#4	STR	4'-7"	92
B5	6	#11	1	52'-5"	1671
M1	42	#11	STR	47'-3"	10544
S1	116	#6	2	13'-6"	2352
U1	12	#5	3	7'-8"	96
U2	12	#5	3	7'-6"	94
U3	40	#4	3	7'-8"	205
V1	42	#10	4	20'-0"	3615

REINFORCING STEEL (FOR BENT 1) 21,459 LBS.

SP-1	3	**	5	1022'-9"	3200
SP-2	1	*	6	778'-1"	520
SP-3	1	*	6	751'-10"	502
SP-4	1	*	6	718'-5"	480

SPIRAL COLUMN REINFORCING STEEL (FOR BENT 1) 4,702 LBS.

** THE "SP" SPIRAL REINFORCING STEEL SHALL BE W31 OR D-31 COLD DRAWN WIRE OR #5 PLAIN OR DEFORMED BAR

* THE "SP" SPIRAL REINFORCING STEEL SHALL BE W20 OR D-20 COLD DRAWN WIRE OR #4 PLAIN OR DEFORMED BAR

CLASS A CONCRETE BREAKDOWN (FOR BENT 1)

POUR #2 (COLUMNS)	22.1 C.Y.
POUR #3 (CAP)	47.7 C.Y.
TOTAL CLASS A CONCRETE	69.8 C.Y.

DRILLED PIERS: (FOR BENT 1)	
DRILLED PIER CONCRETE POUR #1 (DRILLED PIERS)	66.0 C.Y.
4'-6" Ø DRILLED PIER NOT IN SOIL	27.0 LIN. FT.
4'-6" Ø DRILLED PIER IN SOIL	85.0 LIN. FT.
PERMANENT STEEL CASING FOR 4'-6" Ø DRILLED PIER	54 LIN. FT.
Δ CSL TUBES	466.0 LIN. FT.

Δ NO SEPARATE PAYMENT WILL BE MADE FOR CSL TUBES. CSL TUBES WILL BE INCLUDED IN THE UNIT BID PRICE FOR DRILLED PIERS.

PROJECT NO. R-2707C
CLEVELAND COUNTY
STATION: 384+50.00 -L-

SHEET 2 OF 2

DRAWN BY: MAL	DATE: 11/2016
CHECKED BY: JMR	DATE: 12/2016
DESIGN ENGINEER OF RECORD: MAL	DATE: 11/2016

DOCUMENT NOT CONSIDERED FINAL UNLESS ALL SIGNATURES COMPLETED

REVISIONS						SHEET NO.
NO.	BY:	DATE:	NO.	BY:	DATE:	S1-28
1			3			TOTAL SHEETS
2			4			36