

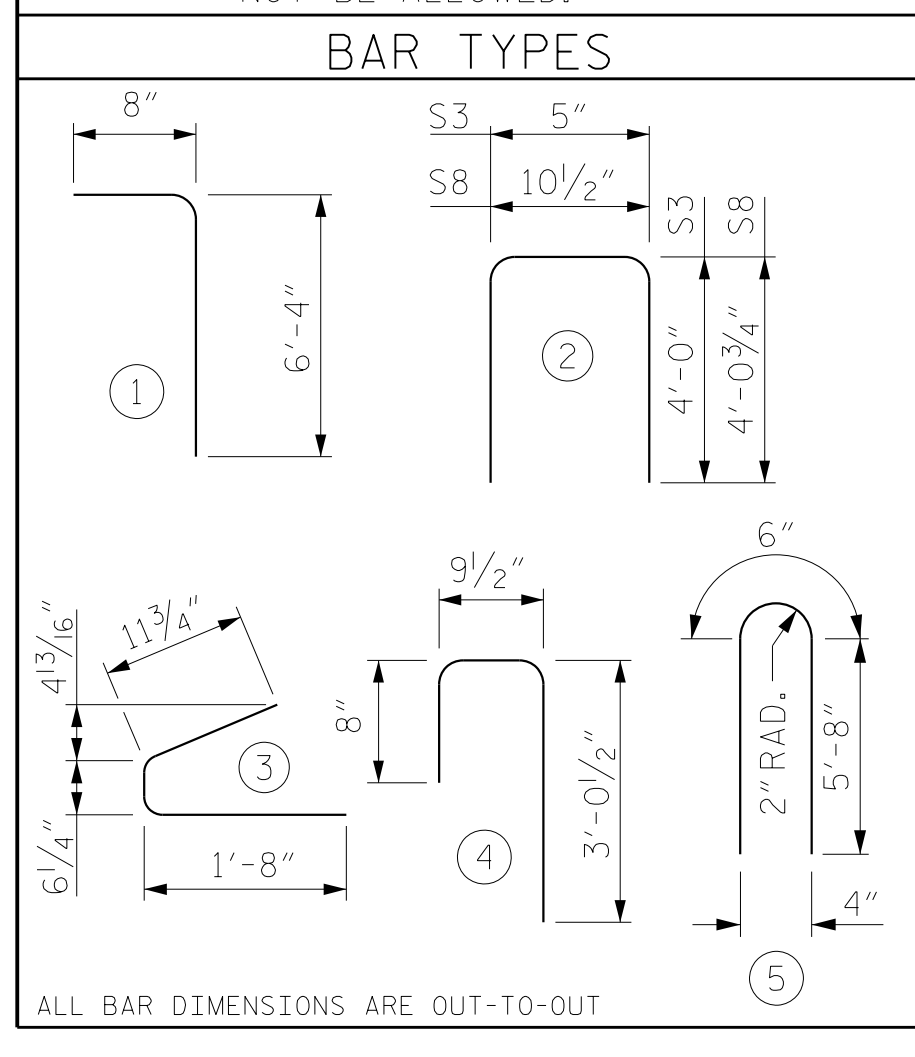
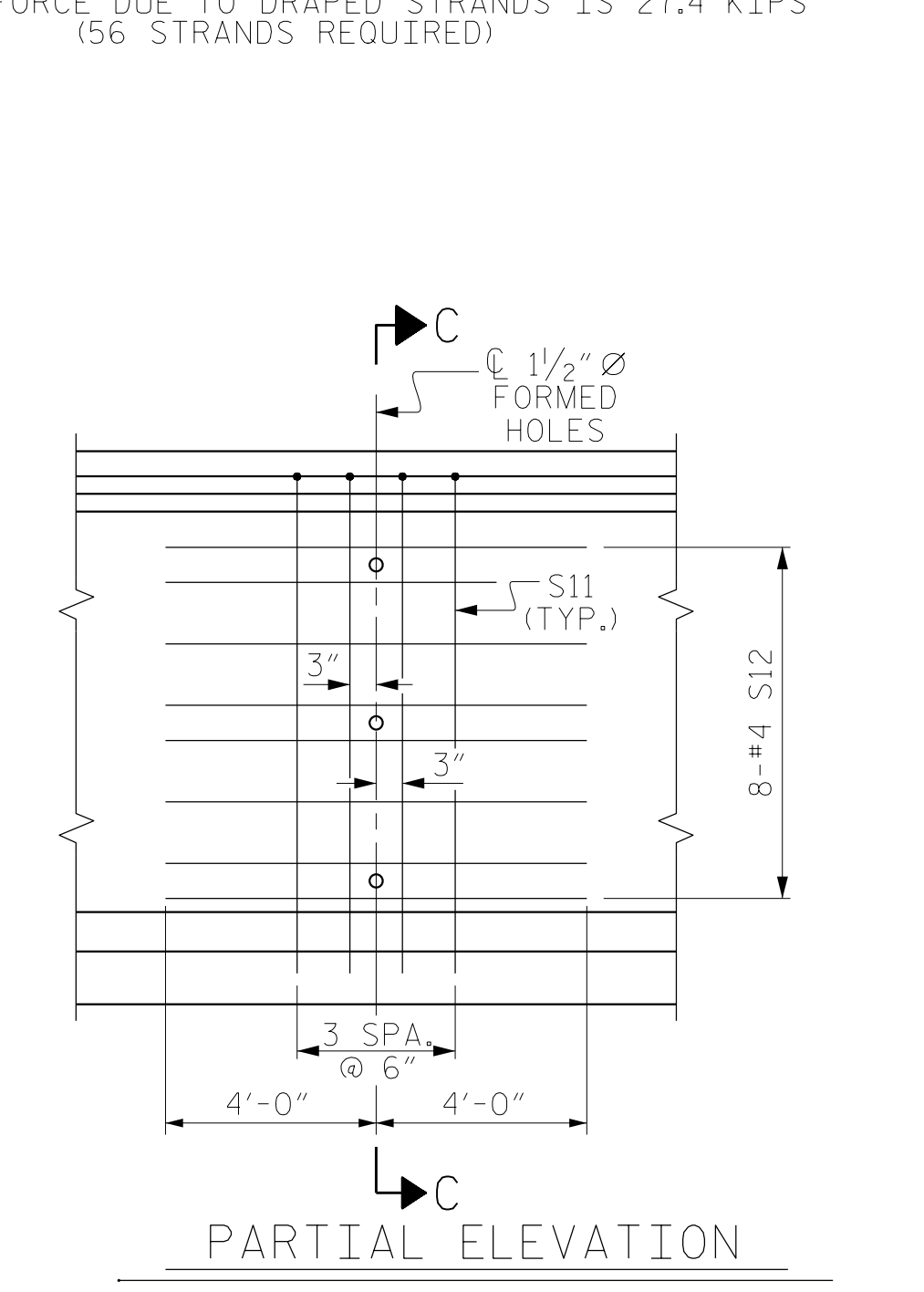
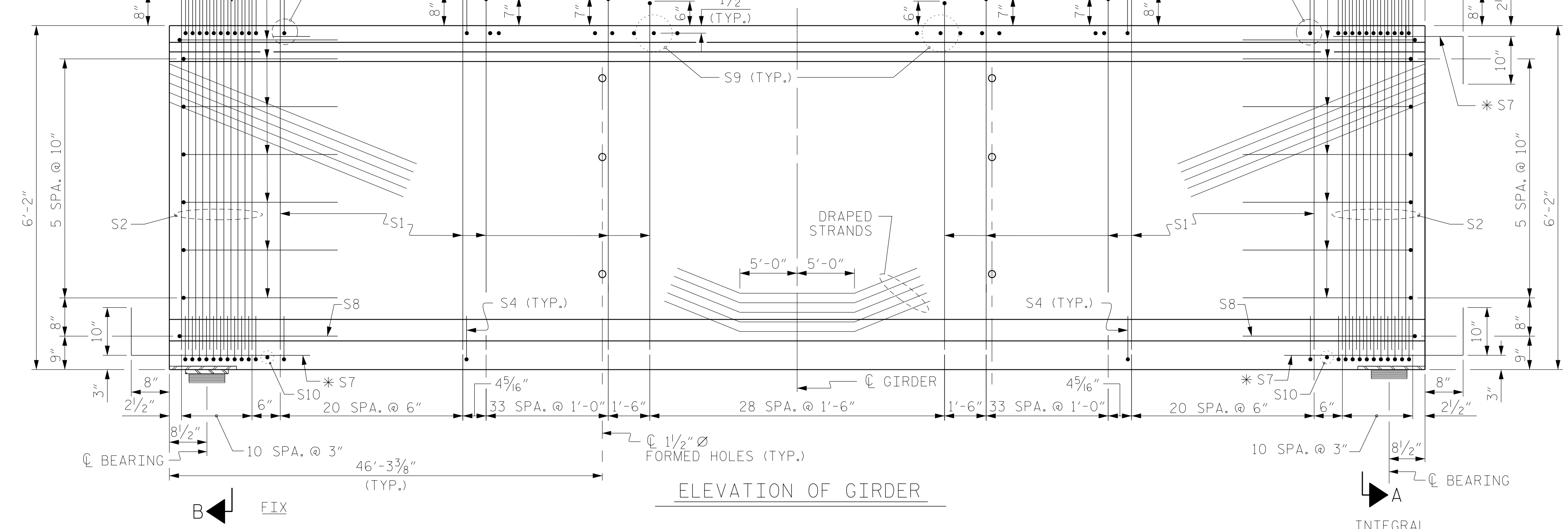
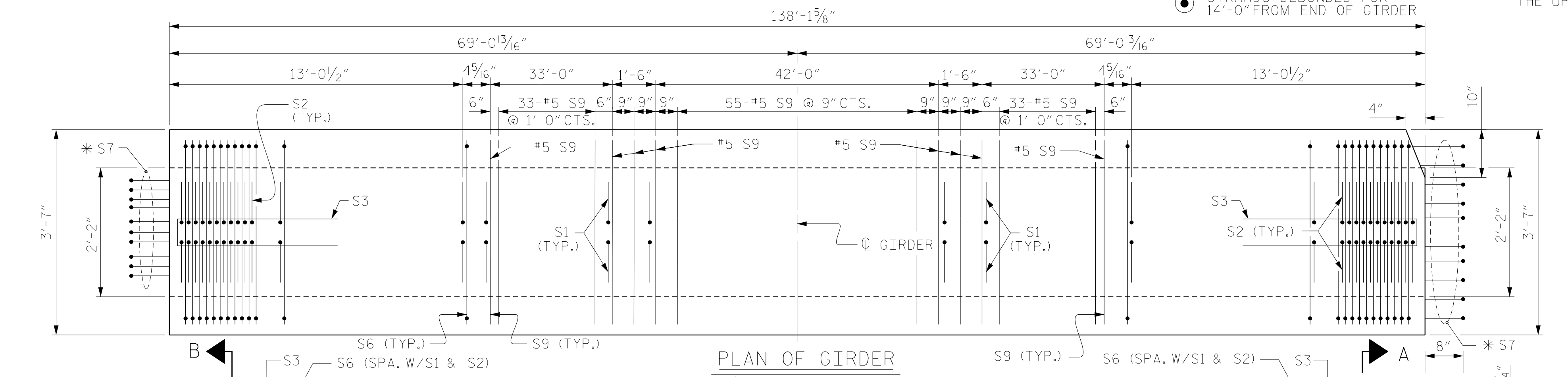
**0.6" Ø L. R. GRADE 270 STRANDS**

AREA (SQUARE INCHES)	ULTIMATE STRENGTH (LBS. PER STRAND)	APPLIED PRESTRESS (LBS. PER STRAND)
0.217	58,600	43,950

**REINFORCING STEEL FOR ONE GDR**

BAR	NUMBER	SIZE	TYPE	LENGTH	WEIGHT
S1	278	#4	1	7'-0"	1300
S2	44	#5	1	7'-0"	321
S3	14	#4	2	8'-5"	79
S4	116	#4	3	3'-2"	245
S6	128	#5	4	4'-6"	601
*S7	30	#5	STR	3'-8"	115
S8	2	#5	2	9'-0"	19
S9	129	#5	STR	3'-3"	437
S10	2	#3	STR	1'-10"	1
S11	8	#5	5	11'-10"	99
S12	16	#4	STR	8'-0"	86

\* NOTE: S7 BARS SHALL BE BENT BEFORE SHIPMENT. HEAT BENDING SHALL NOT BE ALLOWED.



**QUANTITIES FOR ONE GIRDER**

REINFORCING STEEL	9000 PSI CONCRETE	0.6" Ø L.R. STRANDS
LB.	C.Y.	No.
3303	31.4	56

**GIRDERS REQUIRED**

NUMBER	LENGTH	TOTAL LENGTH
5	138'-1 1/8"	690'-8 1/8"

PROJECT NO. R-2707C  
CLEVELAND COUNTY  
 STATION: 384+50.00 -L-  
 SHEET 3 OF 4



STATE OF NORTH CAROLINA  
 DEPARTMENT OF TRANSPORTATION  
 RALEIGH  
 SUPERSTRUCTURE  
 74" PRESTRESSED CONCRETE  
 MODIFIED BULB TEE  
 CONTINUOUS FOR LIVE LOAD  
 SPAN C  
 LEFT LANE

DRAWN BY: MAL DATE: 11/2016  
 CHECKED BY: JMR DATE: 11/2016  
 DESIGN ENGINEER OF RECORD: MAL DATE: 11/2016

DOCUMENT NOT CONSIDERED  
 FINAL UNLESS ALL  
 SIGNATURES COMPLETED

**REVISIONS**

NO.	BY:	DATE:	NO.	BY:	DATE:
1			3		
2			4		

SHEET NO. S1-13  
 TOTAL SHEETS 36