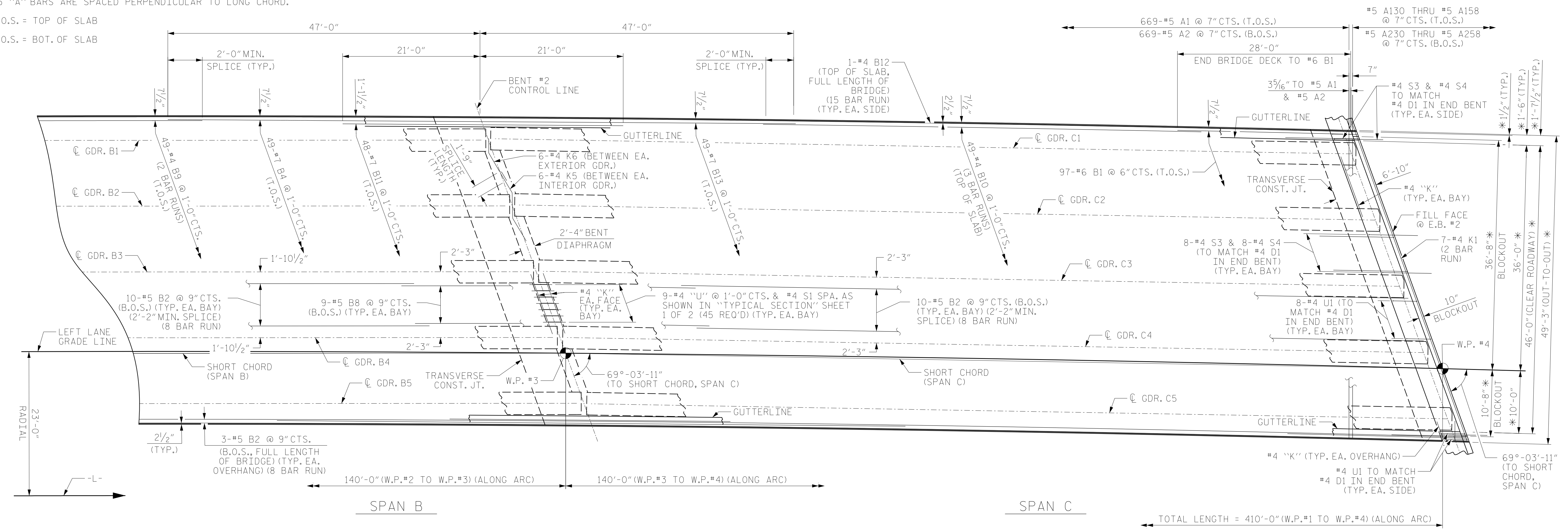


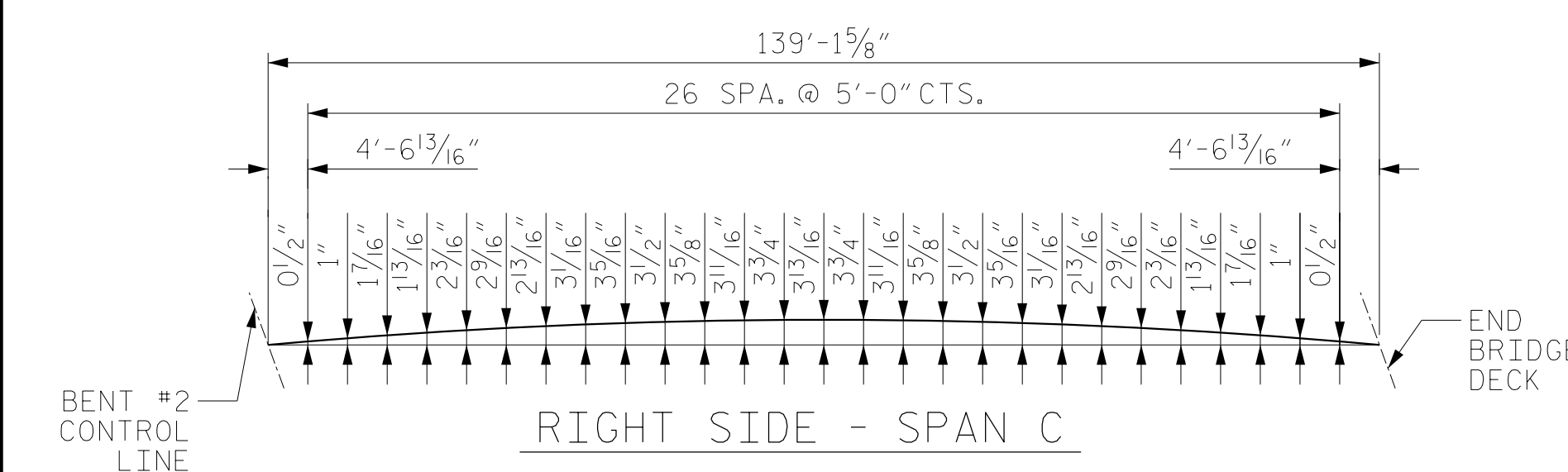
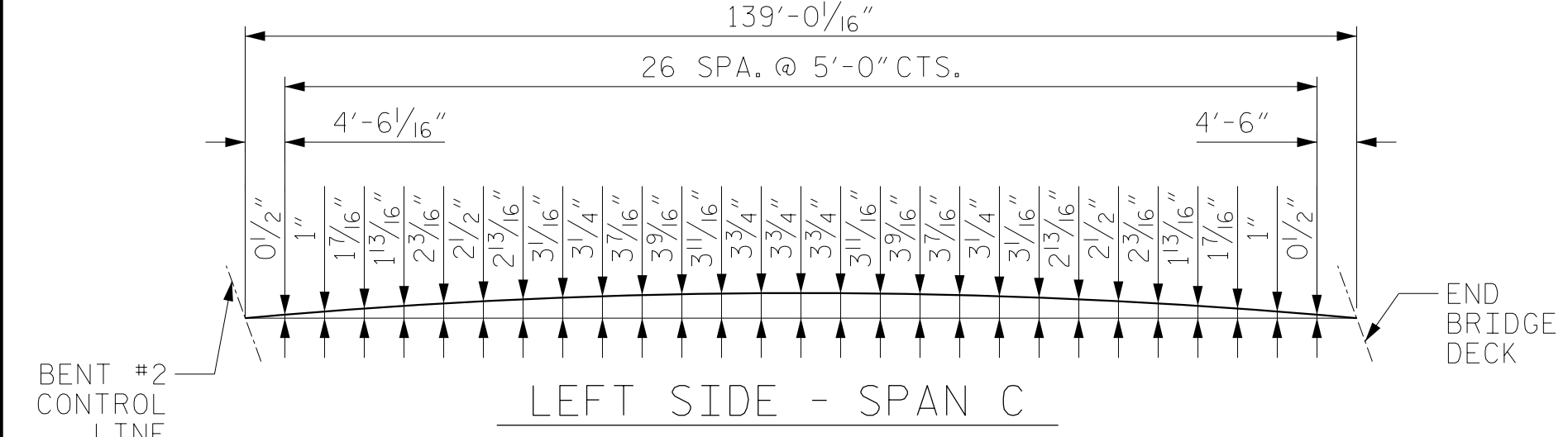
NOTES

FOR SPLICE LENGTHS NOT SHOWN, REFER TO MINIMUM SPLICE LENGTH TABLE ON "SUPERSTRUCTURE BILL OF MATERIAL" SHEET 1 OF 2.  
FOR END BENT DIAPHRAGM BARS AND BENT DIAPHRAGM BARS, SEE "TYPICAL SECTION DETAILS" SHEET 2 OF 2.  
STEEL INTERMEDIATE DIAPHRAGMS NOT SHOWN FOR CLARITY. FOR LOCATIONS, SEE "FRAMING PLAN" SHEET.  
FOR POURING SEQUENCE, SEE "SUPERSTRUCTURE BILL OF MATERIAL" SHEET 2 OF 2.  
FOR BARRIER RAIL REINFORCING STEEL, SEE "CONCRETE BARRIER RAIL" SHEET.  
#5 "A" BARS ARE SPACED PERPENDICULAR TO LONG CHORD.

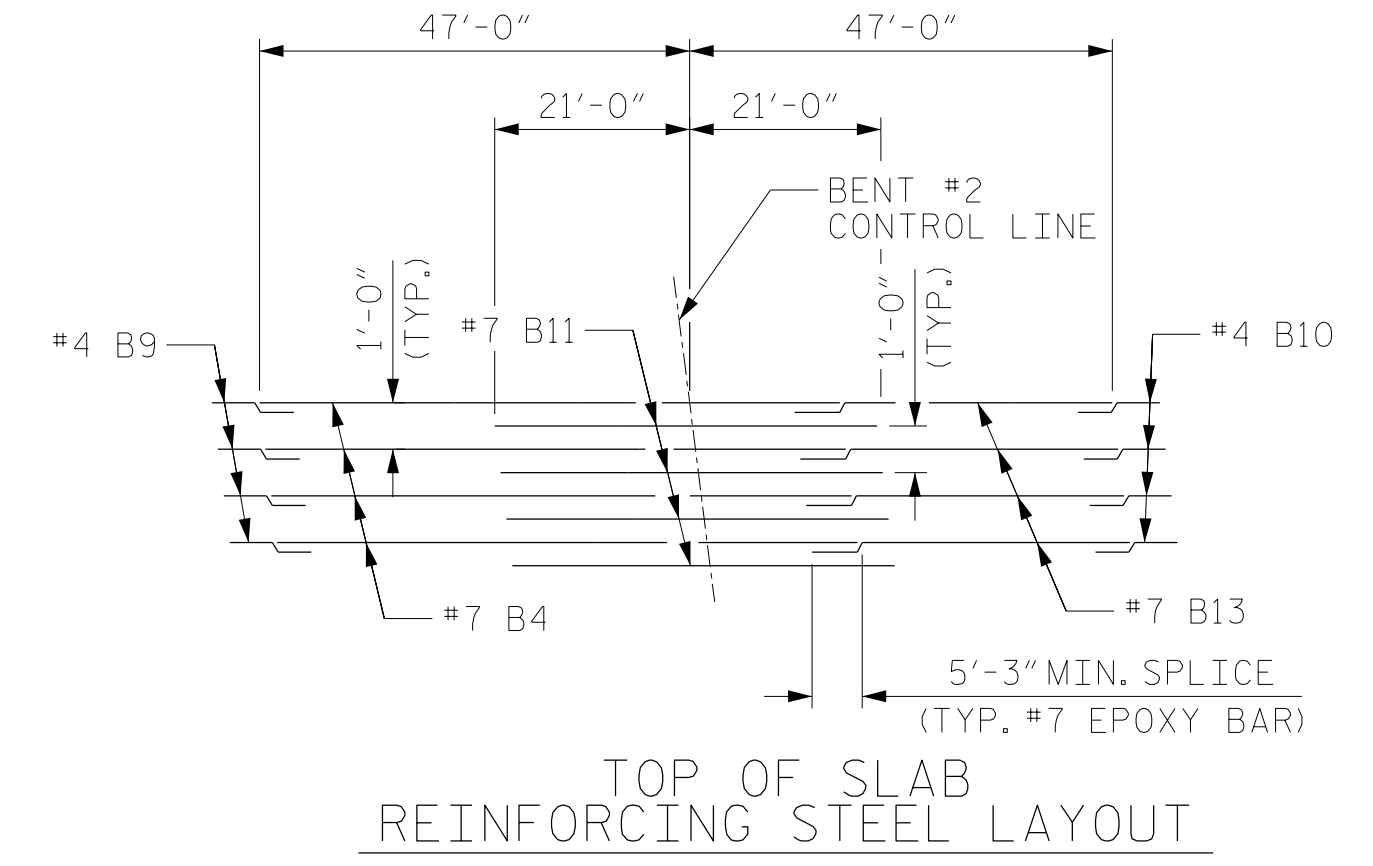
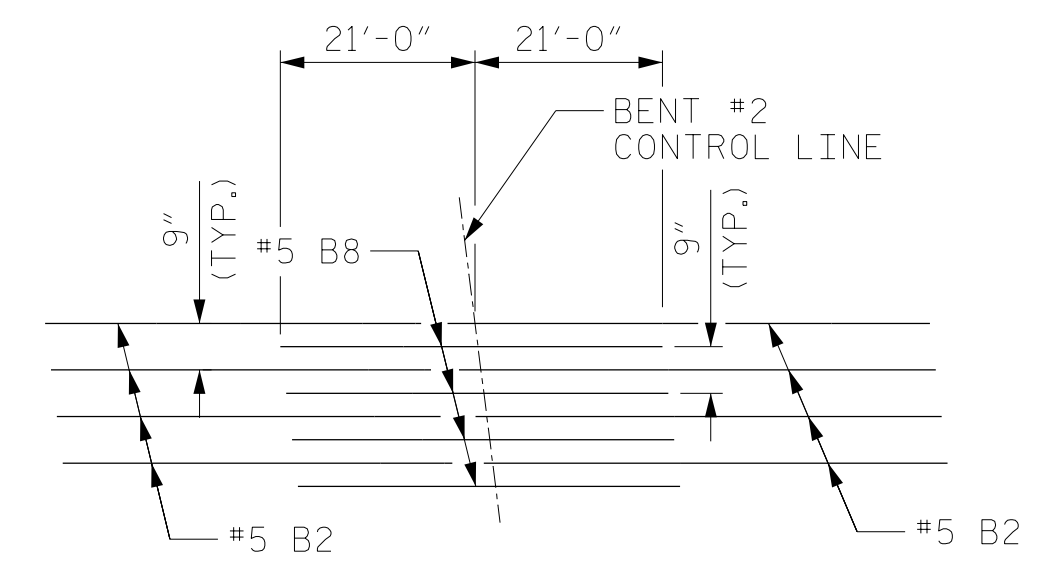
T.O.S. = TOP OF SLAB  
B.O.S. = BOT. OF SLAB



PARTIAL PLAN OF SPANS  
\*RADIAL DIMENSIONS



ARC OFFSETS



PROJECT NO. R-2707C  
CLEVELAND COUNTY  
STATION: 384+50.00 -L-  
SHEET 2 OF 2



STATE OF NORTH CAROLINA  
DEPARTMENT OF TRANSPORTATION  
RALEIGH  
SUPERSTRUCTURE  
PLAN OF SPANS  
LEFT LANE

REVISIONS						SHEET NO.
NO.	BY:	DATE:	NO.	BY:	DATE:	S1-9
1			3			TOTAL SHEETS
2			4			36

DRAWN BY: MAL DATE: 11/2016  
CHECKED BY: JMR DATE: 11/2016  
DESIGN ENGINEER OF RECORD: MAL DATE: 11/2016

DOCUMENT NOT CONSIDERED  
FINAL UNLESS ALL  
SIGNATURES COMPLETED