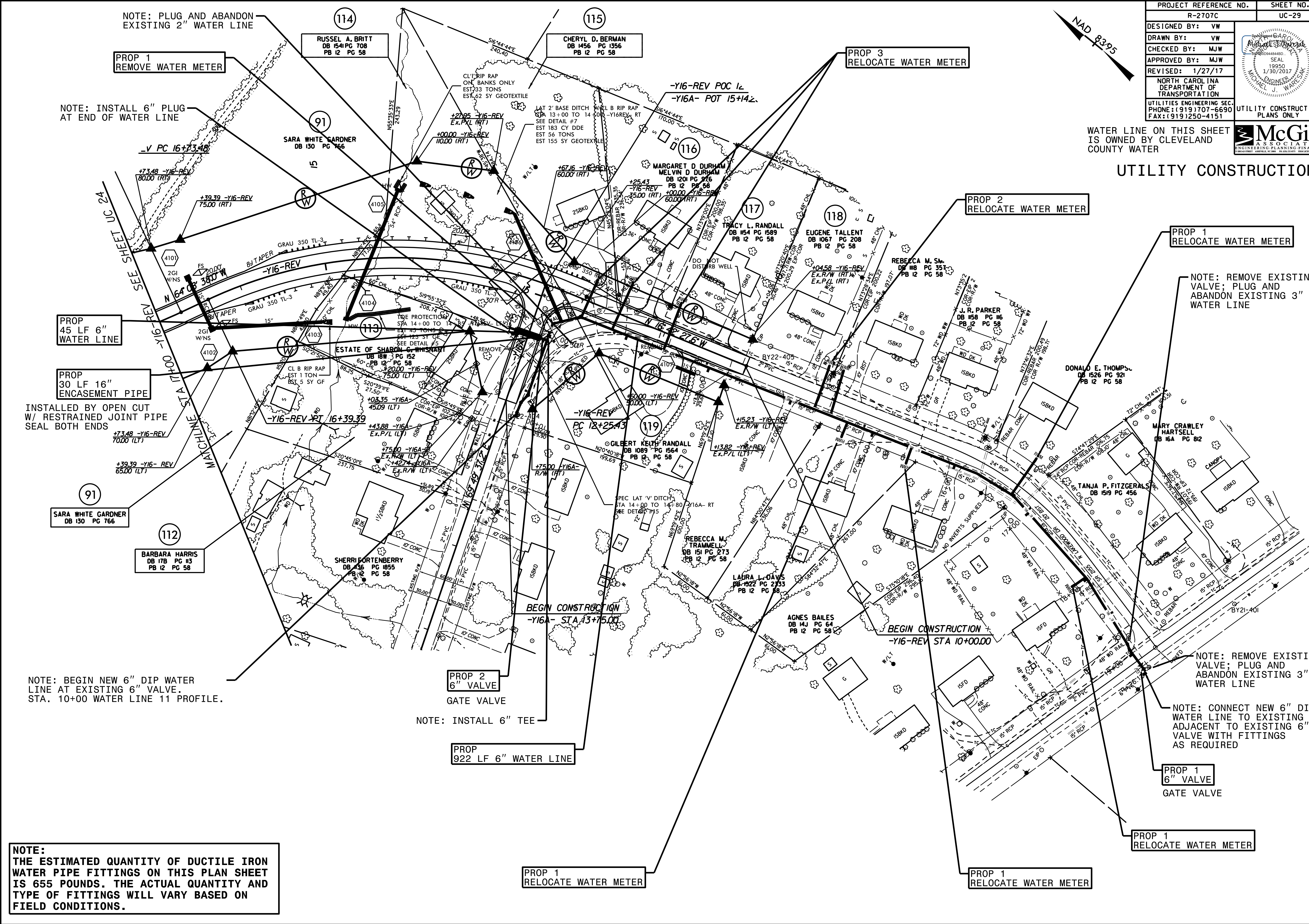


PROJECT REFERENCE NO.	SHEET NO.
R-2707C	UC-29
DESIGNED BY: VW	
DRAWN BY: VW	
CHECKED BY: MJW	
APPROVED BY: MJW	
REVISED: 1/27/17	
NORTH CAROLINA DEPARTMENT OF TRANSPORTATION UTILITIES ENGINEERING SECTION PHONE: (919) 707-6690 FAX: (919) 250-4151	
UTILITY CONSTRUCTION PLANS ONLY	

WATER LINE ON THIS SHEET IS OWNED BY CLEVELAND COUNTY WATER



UTILITY CONSTRUCTION



NOTE: PLUG AND ABANDON EXISTING 2" WATER LINE

NOTE: INSTALL 6" PLUG AT END OF WATER LINE

PROP 45 LF 6" WATER LINE

PROP 30 LF 16" ENCASEMENT PIPE

INSTALLED BY OPEN CUT W/ RESTRAINED JOINT PIPE SEAL BOTH ENDS

NOTE: BEGIN NEW 6" DIP WATER LINE AT EXISTING 6" VALVE. STA. 10+00 WATER LINE 11 PROFILE.

PROP 2 6" VALVE GATE VALVE

NOTE: INSTALL 6" TEE

PROP 922 LF 6" WATER LINE

PROP 1 RELOCATE WATER METER

NOTE: REMOVE EXISTING VALVE; PLUG AND ABANDON EXISTING 3" WATER LINE

NOTE: REMOVE EXISTING VALVE; PLUG AND ABANDON EXISTING 3" WATER LINE

NOTE: CONNECT NEW 6" DIP WATER LINE TO EXISTING 6" VALVE WITH FITTINGS AS REQUIRED

PROP 1 6" VALVE GATE VALVE

PROP 1 RELOCATE WATER METER

PROP 1 RELOCATE WATER METER

NOTE: THE ESTIMATED QUANTITY OF DUCTILE IRON WATER PIPE FITTINGS ON THIS PLAN SHEET IS 655 POUNDS. THE ACTUAL QUANTITY AND TYPE OF FITTINGS WILL VARY BASED ON FIELD CONDITIONS.

REVISIONS

