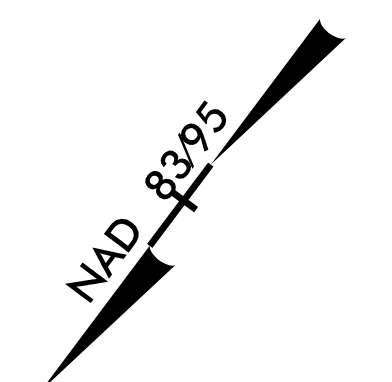


PROJECT REFERENCE NO.	SHEET NO.
R-2707C	UC-28
DESIGNED BY: VW	
DRAWN BY: VW	
CHECKED BY: MJW	
APPROVED BY: MJW	
REVISED: 1/27/17	
NORTH CAROLINA DEPARTMENT OF TRANSPORTATION	
UTILITIES ENGINEERING SEC. PHONE: (919) 707-6690 FAX: (919) 250-4151	UTILITY CONSTRUCTION PLANS ONLY

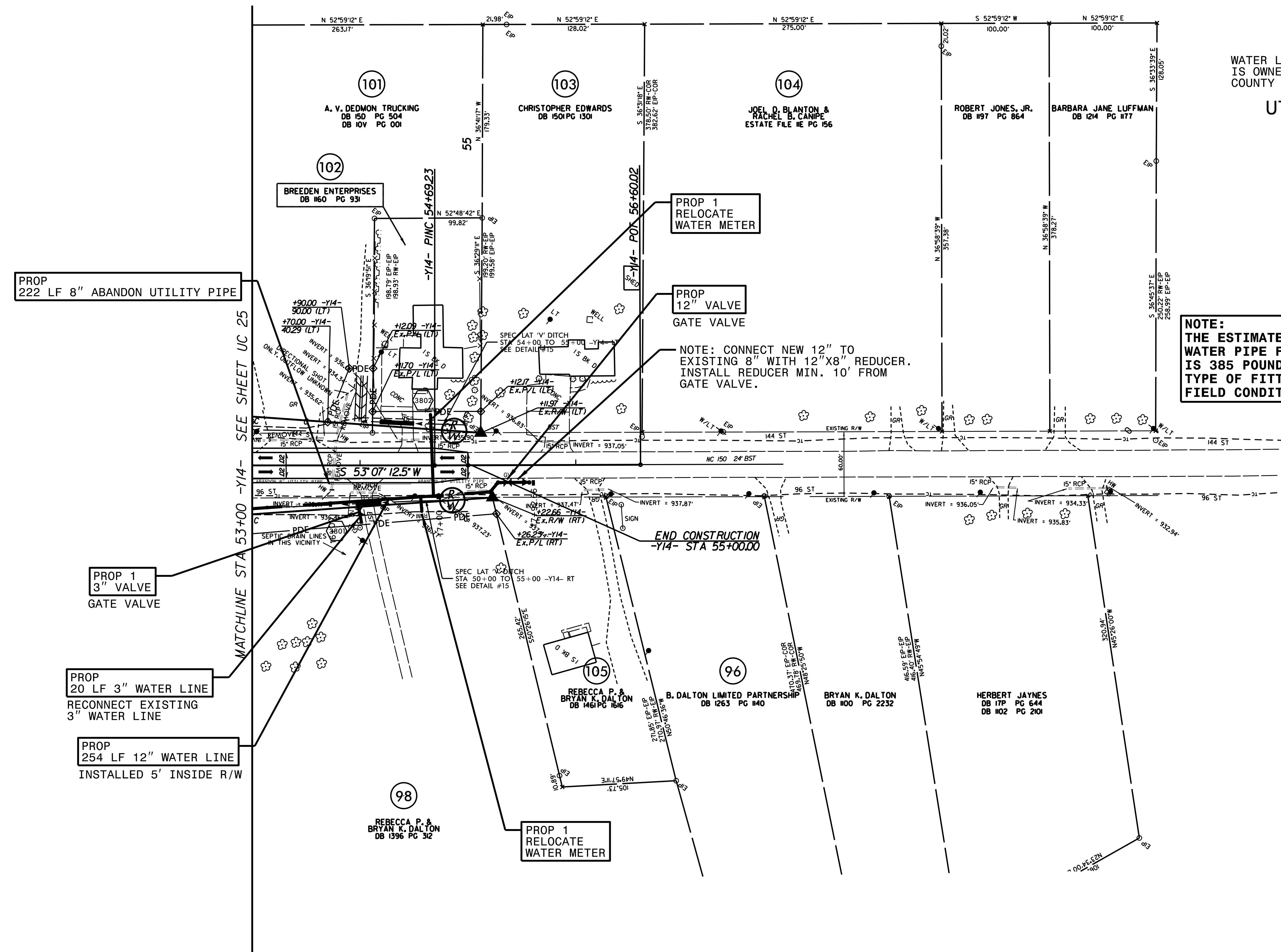
WATER LINE ON THIS SHEET
IS OWNED BY CLEVELAND
COUNTY WATER



UTILITY CONSTRUCTION



NOTE:
THE ESTIMATED QUANTITY OF DUCTILE IRON
WATER PIPE FITTINGS ON THIS PLAN SHEET
IS 385 POUNDS. THE ACTUAL QUANTITY AND
TYPE OF FITTINGS WILL VARY BASED ON
FIELD CONDITIONS.



PROP
222 LF 8" ABANDON UTILITY PIPE

PROP 1
RELOCATE
WATER METER

PROP
12" VALVE
GATE VALVE

NOTE: CONNECT NEW 12" TO
EXISTING 8" WITH 12"X8" REDUCER.
INSTALL REDUCER MIN. 10' FROM
GATE VALVE.

PROP 1
3" VALVE
GATE VALVE

PROP
20 LF 3" WATER LINE
RECONNECT EXISTING
3" WATER LINE

PROP
254 LF 12" WATER LINE
INSTALLED 5' INSIDE R/W

PROP 1
RELOCATE
WATER METER

END CONSTRUCTION
-Y14- STA 55+00.00

REVISIONS