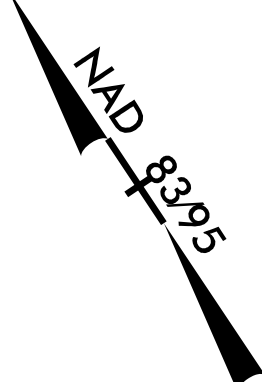


PROJECT REFERENCE NO.	SHEET NO.
R-2707C	UC-26
DESIGNED BY: VW	
DRAWN BY: VW	
CHECKED BY: MJW	
APPROVED BY: MJW	
REVISED: 1/26/17	
NORTH CAROLINA DEPARTMENT OF TRANSPORTATION UTILITIES ENGINEERING SEC. PHONE: (919) 707-6690 FAX: (919) 250-4151	
UTILITY CONSTRUCTION PLANS ONLY	

NOTE:
 THE ESTIMATED QUANTITY OF DUCTILE IRON
 WATER PIPE FITTINGS ON THIS PLAN SHEET
 IS 1035 POUNDS. THE ACTUAL QUANTITY AND
 TYPE OF FITTINGS WILL VARY BASED ON
 FIELD CONDITIONS.

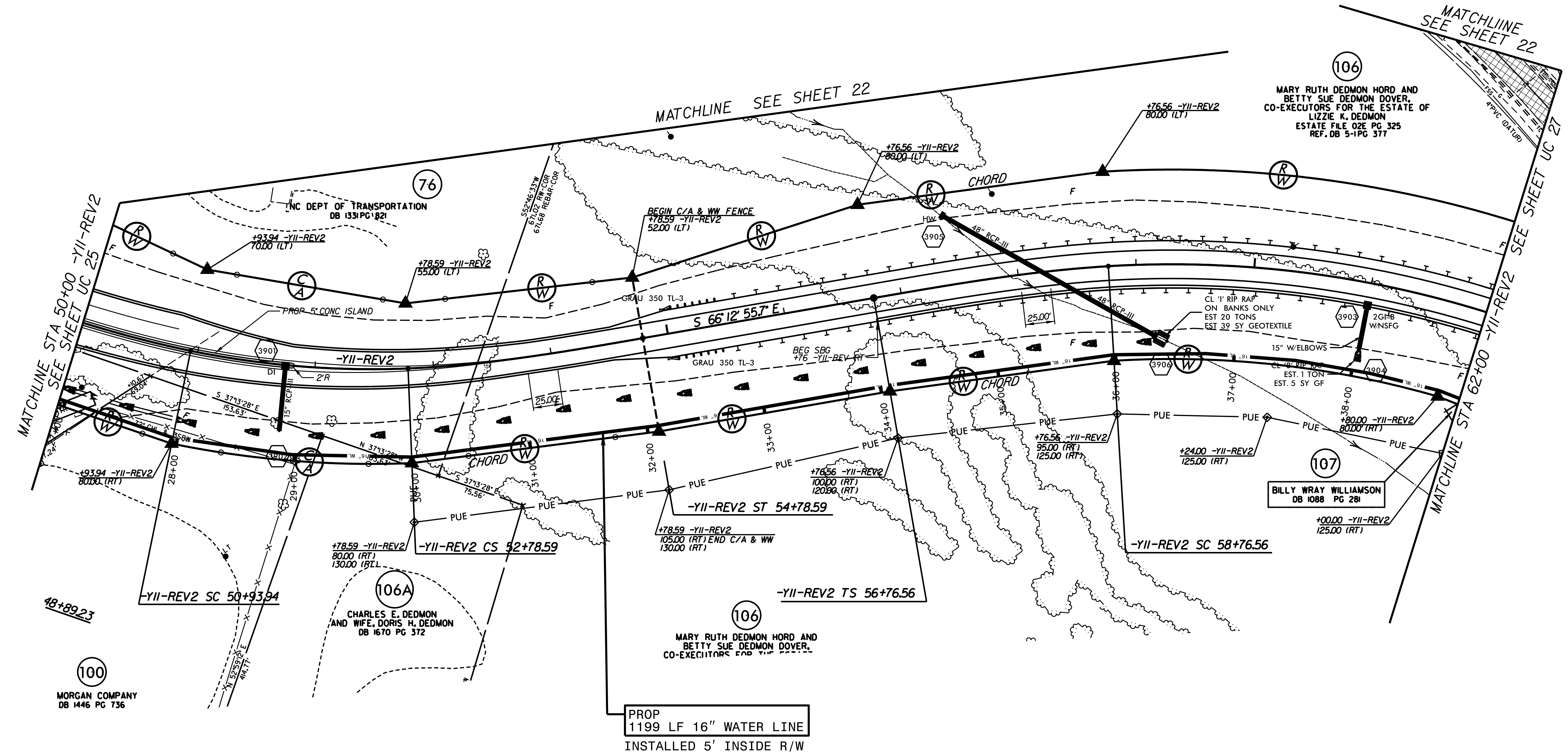


WATER LINE ON THIS SHEET
 IS OWNED BY CLEVELAND
 COUNTY WATER



UTILITY CONSTRUCTION

REVISIONS



PROP
 1199 LF 16" WATER LINE
 INSTALLED 5' INSIDE R/W