

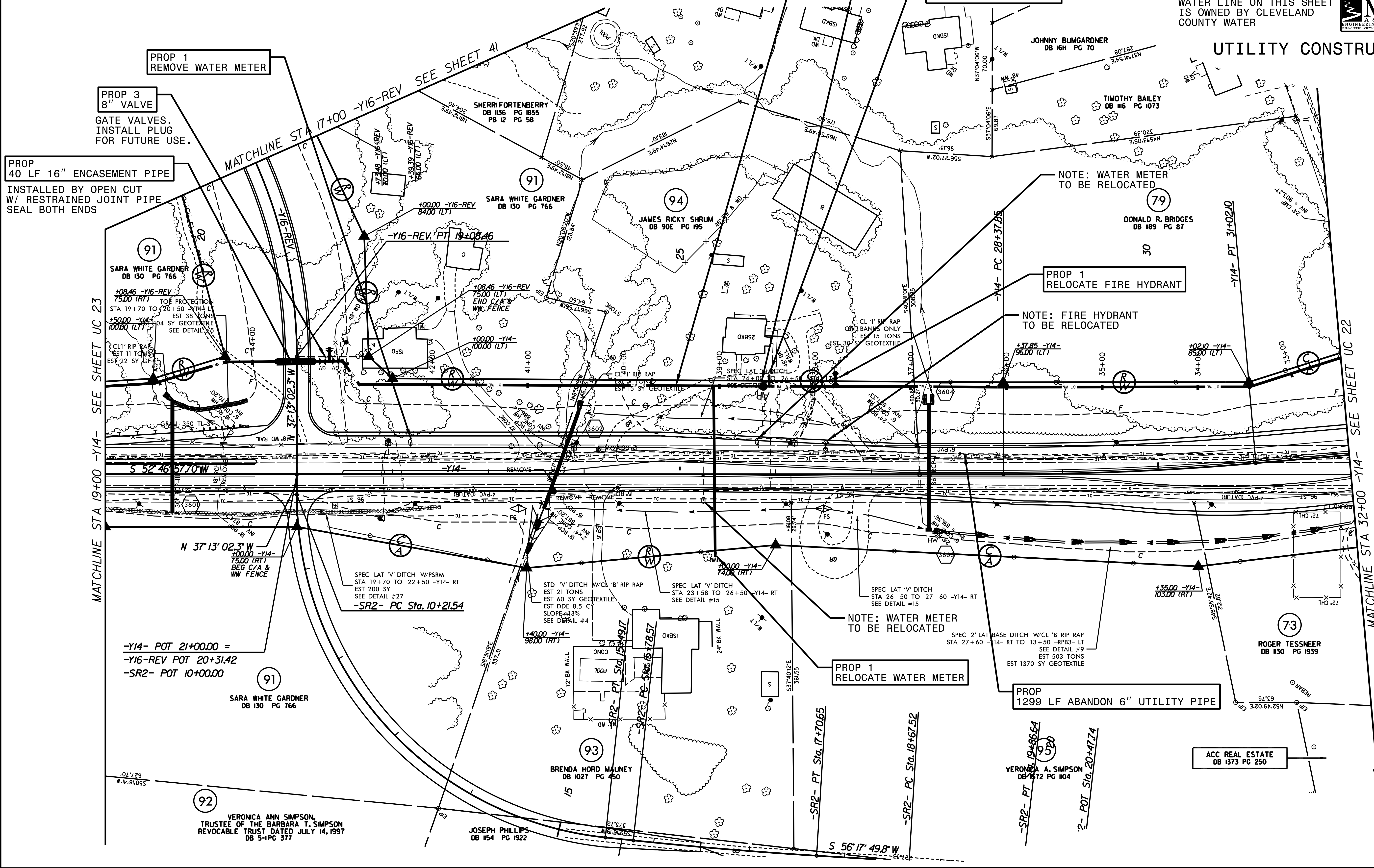
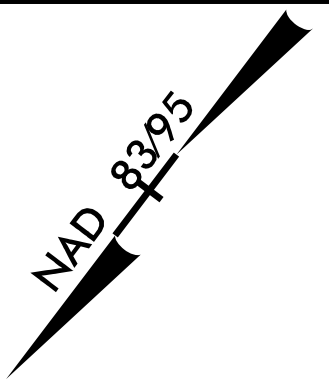
PROJECT REFERENCE NO.	SHEET NO.
R-2707C	UC-24
DESIGNED BY: VW	
DRAWN BY: VW	
CHECKED BY: MJW	
APPROVED BY: MJW	
REVISED: 2/1/17	
NORTH CAROLINA DEPARTMENT OF TRANSPORTATION	
UTILITIES ENGINEERING SEC. PHONE: (919) 707-6690 FAX: (919) 250-4151	
UTILITY CONSTRUCTION PLANS ONLY	



WATER LINE ON THIS SHEET IS OWNED BY CLEVELAND COUNTY WATER



NOTE:
THE ESTIMATED QUANTITY OF DUCTILE IRON WATER PIPE FITTINGS ON THIS PLAN SHEET IS 735 POUNDS. THE ACTUAL QUANTITY AND TYPE OF FITTINGS WILL VARY BASED ON FIELD CONDITIONS.



PROP 1 REMOVE WATER METER

PROP 3 8" VALVE

GATE VALVES, INSTALL PLUG FOR FUTURE USE.

PROP 40 LF 16" ENCASEMENT PIPE

INSTALLED BY OPEN CUT W/ RESTRAINED JOINT PIPE SEAL BOTH ENDS

PROP 1310 LF 8" WATER LINE
INSTALLED 5' INSIDE R/W

PROP 1" AIR RELEASE VALVE
INSTALLED AT ACTUAL HIGH POINT

PROP 1 RELOCATE WATER METER

NOTE: WATER METER TO BE RELOCATED

PROP 1 RELOCATE FIRE HYDRANT

NOTE: FIRE HYDRANT TO BE RELOCATED

NOTE: WATER METER TO BE RELOCATED

PROP 1 RELOCATE WATER METER

PROP 1299 LF ABANDON 6" UTILITY PIPE

ACC REAL ESTATE
DB 1373 PG 250

MATCHLINE STA 19+00 -Y14- SEE SHEET UC 23

MATCHLINE STA 17+00 -Y16-REV SEE SHEET 41

MATCHLINE STA 32+00 -Y14- SEE SHEET UC 22

REVISIONS

-Y14- POT 21+00.00 =
-Y16-REV POT 20+31.42
-SR2- POT 10+00.00

VERONICA ANN SIMPSON,
TRUSTEE OF THE BARBARA T. SIMPSON
REVOCABLE TRUST DATED JULY 14, 1997
DB 5-1 PG 377

JOSEPH PHILLIPS
DB 154 PG 1922

BRENDA HORD MALONEY
DB 1027 PG 450

VERONICA A. SIMPSON
DB 772 PG 1004

ROGER TESSNEER
DB 130 PG 1939

DONALD R. BRIDGES
DB 189 PG 87

TIMOTHY BAILEY
DB 116 PG 1073

JOHNNY BUMGARDNER
DB 164 PG 70

JAMES RICKY SHRUM
DB 90E PG 195

SARA WHITE GARDNER
DB 130 PG 766

SHERRI FORTENBERRY
DB 136 PG 1855
PB 12 PG 58

SARA WHITE GARDNER
DB 130 PG 766

+08.46 -Y16-REV
75.00 (RT)
TOP PROTECTION
STA 19+70 TO 20+50 -Y14- LT
EST 38 TONS
+50.00 -Y14-
100.00 (LT)
EST 11 TONS
EST 22 SY GF
CLY' RIP RAP
EST 15 SY GEOTEXTILE
SEE DETAIL #6

+00.00 -Y16-REV
84.00 (LT)

+08.46 -Y16-REV
75.00 (LT)
END C/A &
WW FENCE

+00.00 -Y14-
100.00 (LT)

N 37°13'02.3" W
+00.00 -Y14-
75.00 (RT)
BEG C/A &
WW FENCE

SPEC LAT 'V' DITCH W/PSRM
STA 19+70 TO 22+50 -Y14- RT
EST 200 SY
SEE DETAIL #27
-SR2- PC Sta. 10+21.54

STD 'V' DITCH W/CL 'B' RIP RAP
EST 21 TONS
EST 60 SY GEOTEXTILE
EST DDE 8.5 CY
SLOPE 1:3
SEE DETAIL #4

SPEC LAT 'V' DITCH
STA 23+58 TO 26+50 -Y14- RT
SEE DETAIL #15

SPEC LAT 'V' DITCH
STA 26+50 TO 27+60 -Y14- RT
SEE DETAIL #15

SPEC 2' LAT BASE DITCH W/CL 'B' RIP RAP
STA 27+60 -Y14- RT TO 13+50 -RPB3- LT
SEE DETAIL #9
EST 503 TONS
EST 1370 SY GEOTEXTILE

+35.00 -Y14-
103.00 (RT)

-SR2- PT Sta. 17+70.65

-SR2- PC Sta. 18+67.52

-SR2- PT Sta. 19+86.64

-2- POT Sta. 20+47.74

S 56°17'49.8" W