

| | |
|---|--------------------|
| PROJECT REFERENCE NO. R-2707C | SHEET NO. UC-23 |
| DESIGNED BY: VW | |
| DRAWN BY: VW | |
| CHECKED BY: MJW | |
| APPROVED BY: MJW | |
| REVISSED: 1/27/17 | |
| NORTH CAROLINA DEPARTMENT OF TRANSPORTATION UTILITIES ENGINEERING SEC. PHONE: (919) 707-6690 FAX: (919) 250-4151 | |
| UTILITY CONSTRUCTION PLANS ONLY | |

NOTE:
 THE ESTIMATED QUANTITY OF DUCTILE IRON
 WATER PIPE FITTINGS ON THIS PLAN SHEET
 IS 315 POUNDS. THE ACTUAL QUANTITY AND
 TYPE OF FITTINGS WILL VARY BASED ON
 FIELD CONDITIONS.

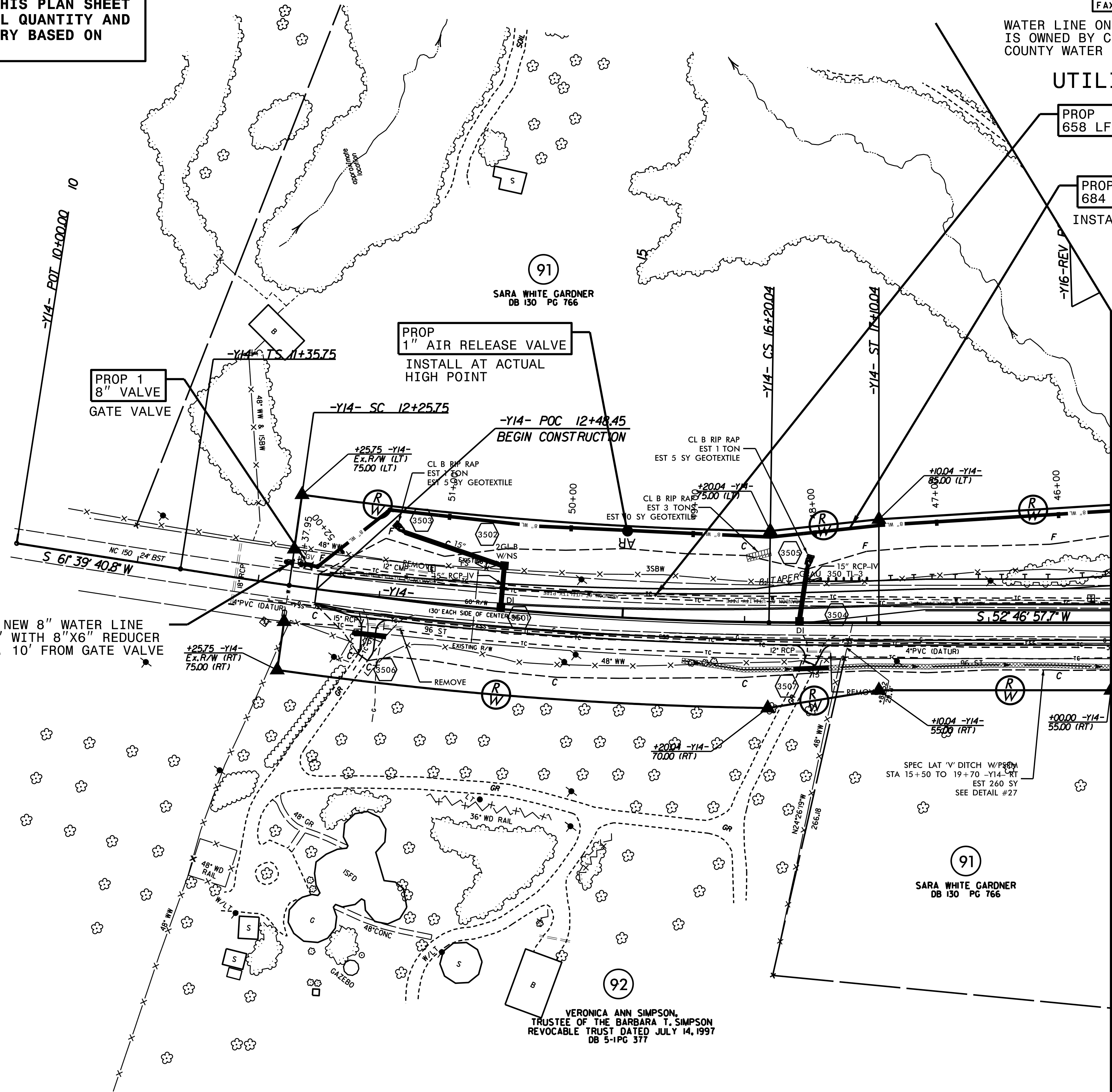
WATER LINE ON THIS SHEET
 IS OWNED BY CLEVELAND
 COUNTY WATER



UTILITY CONSTRUCTION

PROP
 658 LF ABANDON 6" UTILITY PIPE

PROP
 684 LF 8" WATER LINE
 INSTALLED 5' INSIDE R/W



REVISIONS