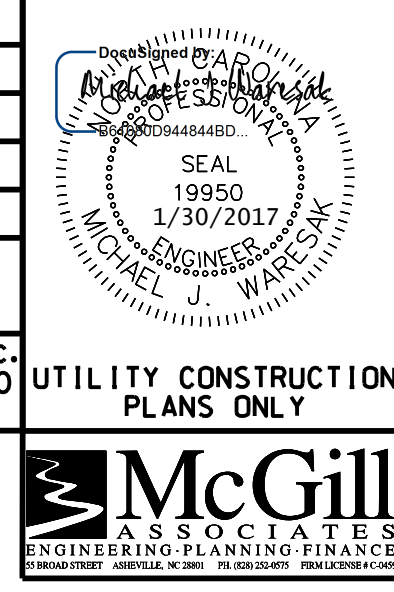


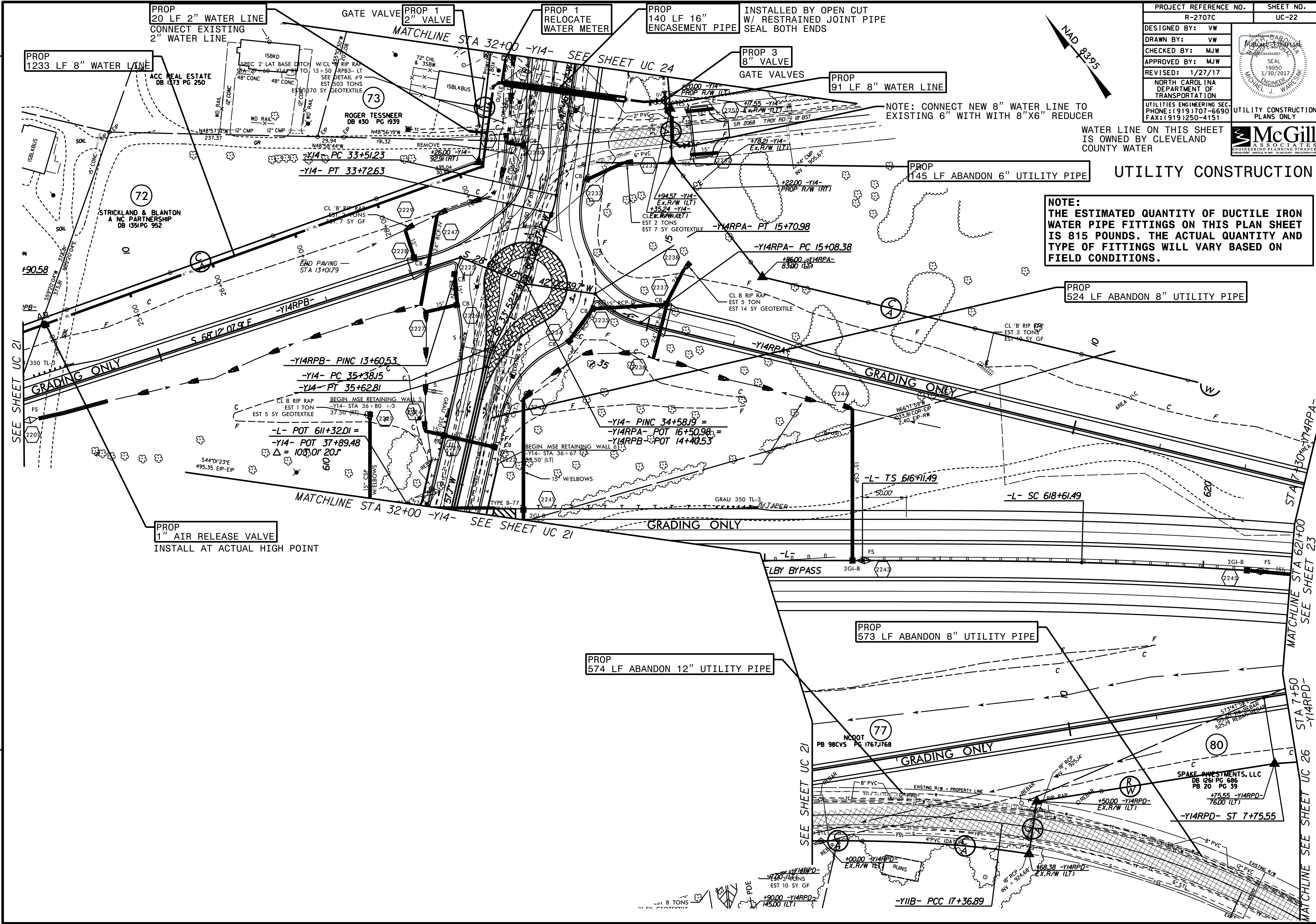
| | |
|--|-----------|
| PROJECT REFERENCE NO. | SHEET NO. |
| R-2707C | UC-22 |
| DESIGNED BY: VW | |
| DRAWN BY: VW | |
| CHECKED BY: MJW | |
| APPROVED BY: MJW | |
| REVISED: 1/27/17 | |
| NORTH CAROLINA DEPARTMENT OF TRANSPORTATION | |
| UTILITIES ENGINEERING SEC. PHONE: (919) 707-6690 FAX: (919) 250-4151 | |
| UTILITY CONSTRUCTION PLANS ONLY | |



WATER LINE ON THIS SHEET IS OWNED BY CLEVELAND COUNTY WATER

UTILITY CONSTRUCTION

NOTE:
THE ESTIMATED QUANTITY OF DUCTILE IRON WATER PIPE FITTINGS ON THIS PLAN SHEET IS 815 POUNDS. THE ACTUAL QUANTITY AND TYPE OF FITTINGS WILL VARY BASED ON FIELD CONDITIONS.



PROP 20 LF 2" WATER LINE
CONNECT EXISTING 2" WATER LINE

PROP 1233 LF 8" WATER LINE

GATE VALVE PROP 1 2" VALVE

PROP 1 RELOCATE WATER METER

PROP 140 LF 16" ENCASEMENT PIPE
INSTALLED BY OPEN CUT W/ RESTRAINED JOINT PIPE SEAL BOTH ENDS

PROP 3 8" VALVE
GATE VALVES

PROP 91 LF 8" WATER LINE

PROP 145 LF ABANDON 6" UTILITY PIPE

PROP 524 LF ABANDON 8" UTILITY PIPE

PROP 573 LF ABANDON 8" UTILITY PIPE

PROP 574 LF ABANDON 12" UTILITY PIPE

PROP 1" AIR RELEASE VALVE
INSTALL AT ACTUAL HIGH POINT

SEE SHEET UC 21

MATCHLINE STA 32+00 -Y14-
SEE SHEET UC 21

GRADING ONLY

GRADING ONLY

GRADING ONLY

GRADING ONLY

SEE SHEET UC 21

MATCHLINE STA 62+00
SEE SHEET 23
STA 7+50
-Y14RPA-
SEE SHEET UC 26
MATCHLINE SEE SHEET UC 26

REVISIONS

