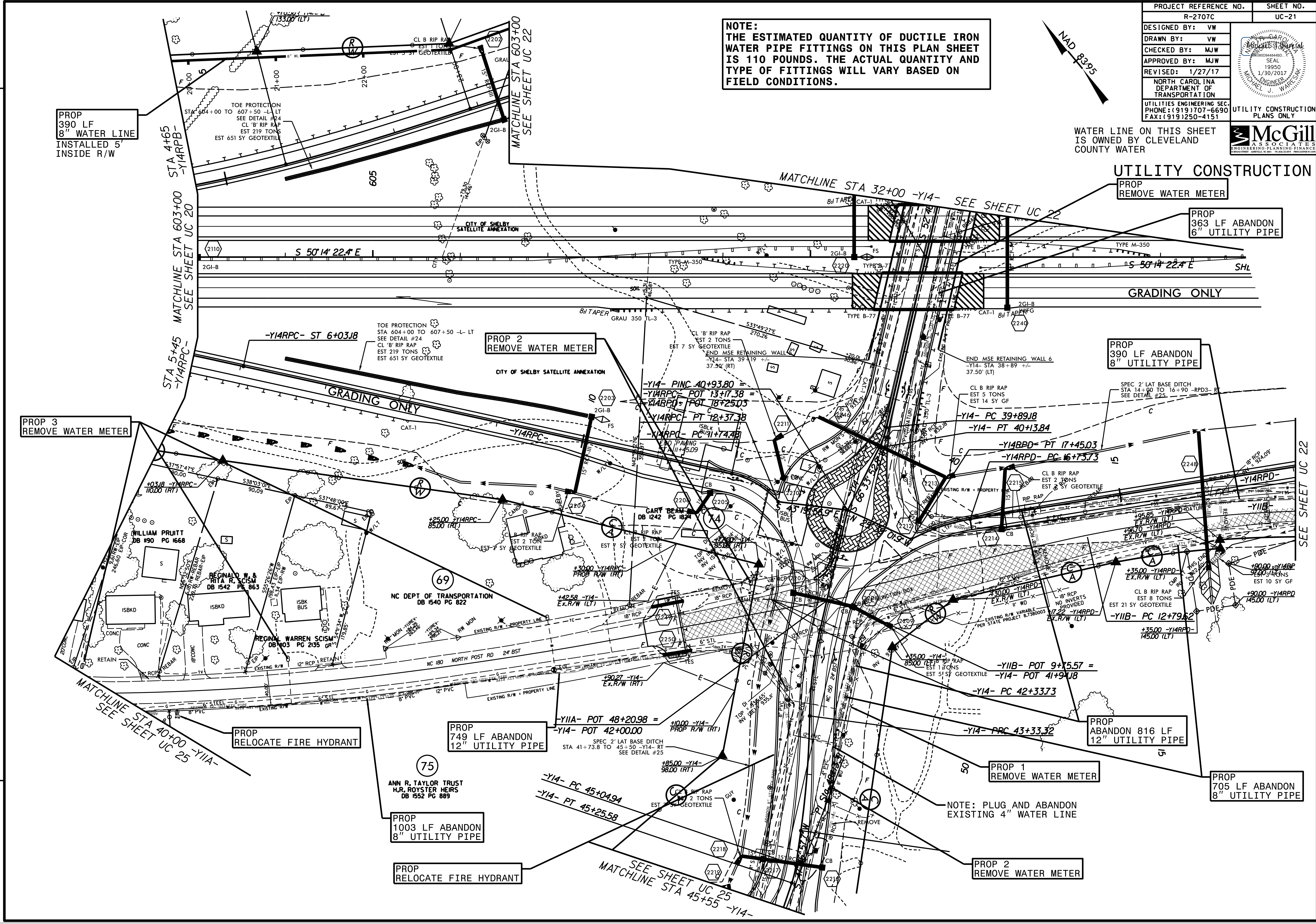
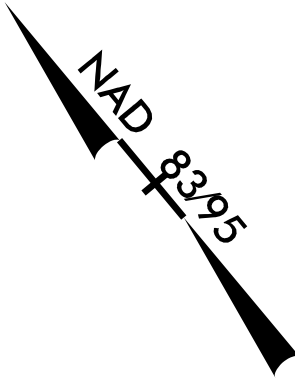


PROJECT REFERENCE NO.	SHEET NO.
R-2707C	UC-21
DESIGNED BY: VW	
DRAWN BY: VW	
CHECKED BY: MJW	
APPROVED BY: MJW	
REVISED: 1/27/17	
NORTH CAROLINA DEPARTMENT OF TRANSPORTATION UTILITIES ENGINEERING SEC. PHONE: (919) 707-6690 FAX: (919) 250-4151	
UTILITY CONSTRUCTION PLANS ONLY	



WATER LINE ON THIS SHEET IS OWNED BY CLEVELAND COUNTY WATER

**NOTE:**  
 THE ESTIMATED QUANTITY OF DUCTILE IRON WATER PIPE FITTINGS ON THIS PLAN SHEET IS 110 POUNDS. THE ACTUAL QUANTITY AND TYPE OF FITTINGS WILL VARY BASED ON FIELD CONDITIONS.



PROP  
 390 LF  
 8" WATER LINE  
 INSTALLED 5'  
 INSIDE R/W

UTILITY CONSTRUCTION  
 PROP  
 REMOVE WATER METER

PROP  
 363 LF ABANDON  
 6" UTILITY PIPE

PROP 2  
 REMOVE WATER METER

PROP  
 390 LF ABANDON  
 8" UTILITY PIPE

PROP 3  
 REMOVE WATER METER

PROP  
 749 LF ABANDON  
 12" UTILITY PIPE

PROP  
 ABANDON 816 LF  
 12" UTILITY PIPE

PROP  
 RELOCATE FIRE HYDRANT

PROP 1  
 REMOVE WATER METER

PROP  
 705 LF ABANDON  
 8" UTILITY PIPE

PROP  
 1003 LF ABANDON  
 8" UTILITY PIPE

PROP 2  
 REMOVE WATER METER

PROP  
 RELOCATE FIRE HYDRANT

NOTE: PLUG AND ABANDON  
 EXISTING 4" WATER LINE

REVISIONS

SEE SHEET UC 22

MATCHLINE STA 40+00 -Y11A-  
 SEE SHEET UC 25

SEE SHEET UC 25  
 MATCHLINE STA 45+55 -Y14-