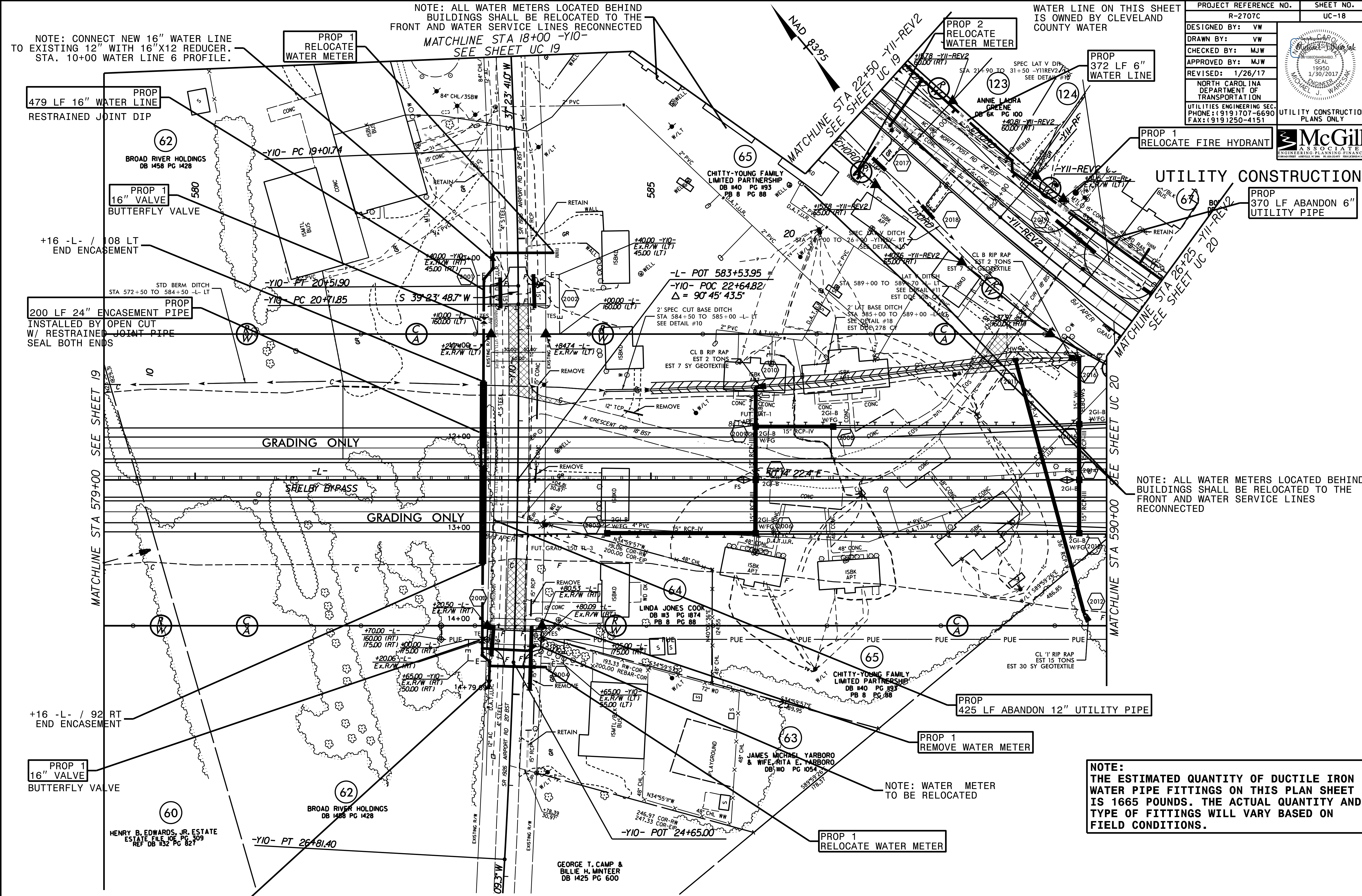
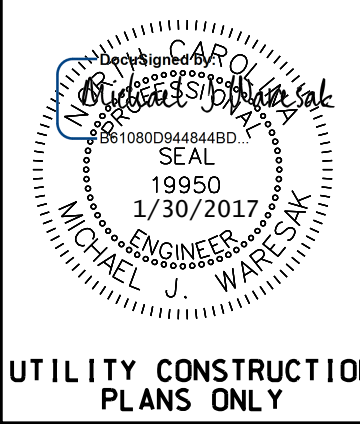


PROJECT REFERENCE NO.	SHEET NO.
R-2707C	UC-18
DESIGNED BY: VW	
DRAWN BY: VW	
CHECKED BY: MJW	
APPROVED BY: MJW	
REVISED: 1/26/17	
NORTH CAROLINA DEPARTMENT OF TRANSPORTATION	
UTILITIES ENGINEERING SEC. PHONE: (919) 707-6690 FAX: (919) 250-4151	
UTILITY CONSTRUCTION PLANS ONLY	



NOTE: CONNECT NEW 16" WATER LINE TO EXISTING 12" WITH 16"X12 REDUCER. STA. 10+00 WATER LINE 6 PROFILE.

NOTE: ALL WATER METERS LOCATED BEHIND BUILDINGS SHALL BE RELOCATED TO THE FRONT AND WATER SERVICE LINES RECONNECTED  
MATCHLINE STA 18+00 -Y10- SEE SHEET UC 19

WATER LINE ON THIS SHEET IS OWNED BY CLEVELAND COUNTY WATER

UTILITY CONSTRUCTION  
PROP 1 RELOCATE FIRE HYDRANT  
PROP 370 LF ABANDON 6" UTILITY PIPE

NOTE: ALL WATER METERS LOCATED BEHIND BUILDINGS SHALL BE RELOCATED TO THE FRONT AND WATER SERVICE LINES RECONNECTED

NOTE: THE ESTIMATED QUANTITY OF DUCTILE IRON WATER PIPE FITTINGS ON THIS PLAN SHEET IS 1665 POUNDS. THE ACTUAL QUANTITY AND TYPE OF FITTINGS WILL VARY BASED ON FIELD CONDITIONS.

NOTE: CONNECT NEW 16" WATER LINE TO EXISTING 12" WITH 16"X12 REDUCER

REVISIONS

MATCHLINE STA 579+00 SEE SHEET 19

MATCHLINE STA 590+00 SEE SHEET UC 20

NAD 83/25

PROP 479 LF 16" WATER LINE RESTRAINED JOINT DIP

PROP 1 RELOCATE WATER METER

PROP 2 RELOCATE WATER METER

PROP 372 LF 6" WATER LINE

PROP 1 16" VALVE BUTTERFLY VALVE

+16 -L- / 108 LT END ENCASEMENT

PROP 200 LF 24" ENCASUREMENT PIPE INSTALLED BY OPEN CUT W/ RESTRAINED JOINT PIPE SEAL BOTH ENDS

GRADING ONLY

SHELBY BYPASS

GRADING ONLY

+16 -L- / 92 RT END ENCASEMENT

PROP 1 16" VALVE BUTTERFLY VALVE

PROP 425 LF ABANDON 12" UTILITY PIPE

PROP 1 REMOVE WATER METER

NOTE: WATER METER TO BE RELOCATED

PROP 1 RELOCATE WATER METER

HENRY B. EDWARDS, JR. ESTATE ESTATE FILE 106 PG 309 REF DB 132 PG 827

BROAD RIVER HOLDINGS DB 1488 PG 1428

LINDA JONES COOP DB 113 PG 1874 PB 8 PG 88

CHITTY-YOUNG FAMILY LIMITED PARTNERSHIP DB 140 PG 193 PB 8 PG 88

GEORGE T. CAMP & BILLIE H. MINTEER DB 1425 PG 600

-L- POT 583+53.95  
-Y10- POC 22+64.82  
Δ = 90° 45' 43.5"

S 39° 23' 48.7" W

-Y10- PC 19+01.74

-Y10- PT 20+51.90

-Y10- PC 20+71.85

+40.00 -Y10- Ex.R/W (LT) 45.00 (LT)

+10.00 -L- 160.00 (LT)

+247.09 -L- Ex.R/W (LT)

+847.4 -L- Ex.R/W (LT)

+12.00 -L- 12" TCP

+15.00 -L- 15" RCP-IV

+18.00 -L- 18" RCP-IV

+21.00 -L- 21" RCP-IV

+24.00 -L- 24" RCP-IV

+27.00 -L- 27" RCP-IV

+30.00 -L- 30" RCP-IV

+33.00 -L- 33" RCP-IV

+36.00 -L- 36" RCP-IV

+39.00 -L- 39" RCP-IV

+42.00 -L- 42" RCP-IV

+45.00 -L- 45" RCP-IV

+48.00 -L- 48" RCP-IV

+51.00 -L- 51" RCP-IV

+54.00 -L- 54" RCP-IV

+57.00 -L- 57" RCP-IV

+60.00 -L- 60" RCP-IV

+63.00 -L- 63" RCP-IV

+66.00 -L- 66" RCP-IV

+69.00 -L- 69" RCP-IV