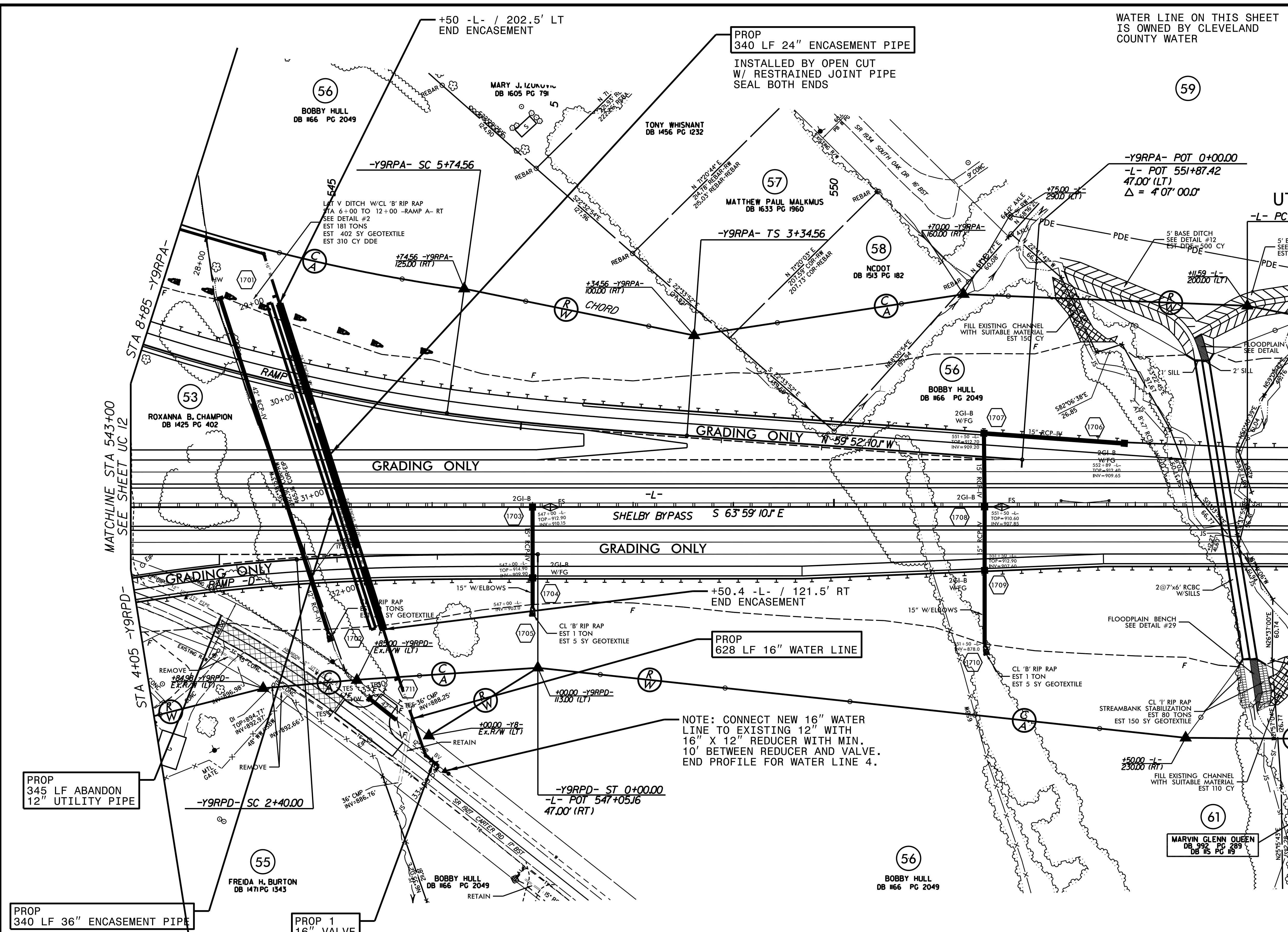


PROJECT REFERENCE NO.	SHEET NO.
R-2707C	UC-17
DESIGNED BY: VW	
DRAWN BY: VW	
CHECKED BY: MJW	
APPROVED BY: MJW	
REVISED: 1/26/17	
NORTH CAROLINA DEPARTMENT OF TRANSPORTATION UTILITIES ENGINEERING SEC. PHONE: (919) 707-6690 FAX: (919) 250-4151	
UTILITY CONSTRUCTION PLANS ONLY	



UTILITY CONSTRUCTION



BY OPEN CUT FOR FUTURE USE BY CLEVELAND COUNTY WATER DISTRICT.
 NOTE: INSTALL 36" ENCASEMENT CENTERLINE 10' FROM 24" ENCASEMENT CENTERLINE.
 NOTE: ALL ENCASEMENTS INSTALLED FOR FUTURE USE SHALL BE SEALED AFTER INSTALLATION PER DETAILS

NOTE: THE ESTIMATED QUANTITY OF DUCTILE IRON WATER PIPE FITTINGS ON THIS PLAN SHEET IS 985 POUNDS. THE ACTUAL QUANTITY AND TYPE OF FITTINGS WILL VARY BASED ON FIELD CONDITIONS.

REVISIONS

MATCHLINE STA 543+00
SEE SHEET UC 12

MATCHLINE STA 555+00
SEE SHEET 18