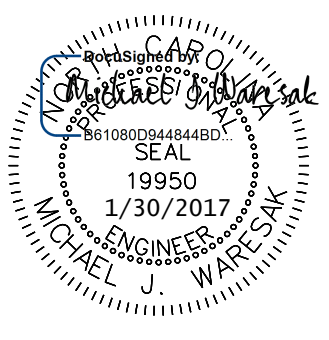


PROJECT REFERENCE NO.	SHEET NO.
R-2707C	UC-16
DESIGNED BY: VW	
DRAWN BY: VW	
CHECKED BY: MJW	
APPROVED BY: MJW	
REVISED: 1/26/17	
NORTH CAROLINA DEPARTMENT OF TRANSPORTATION	
UTILITIES ENGINEERING SEC. PHONE: (919) 707-6690 FAX: (919) 250-4151	UTILITY CONSTRUCTION PLANS ONLY



WATER LINE ON THIS SHEET IS OWNED BY CLEVELAND COUNTY WATER



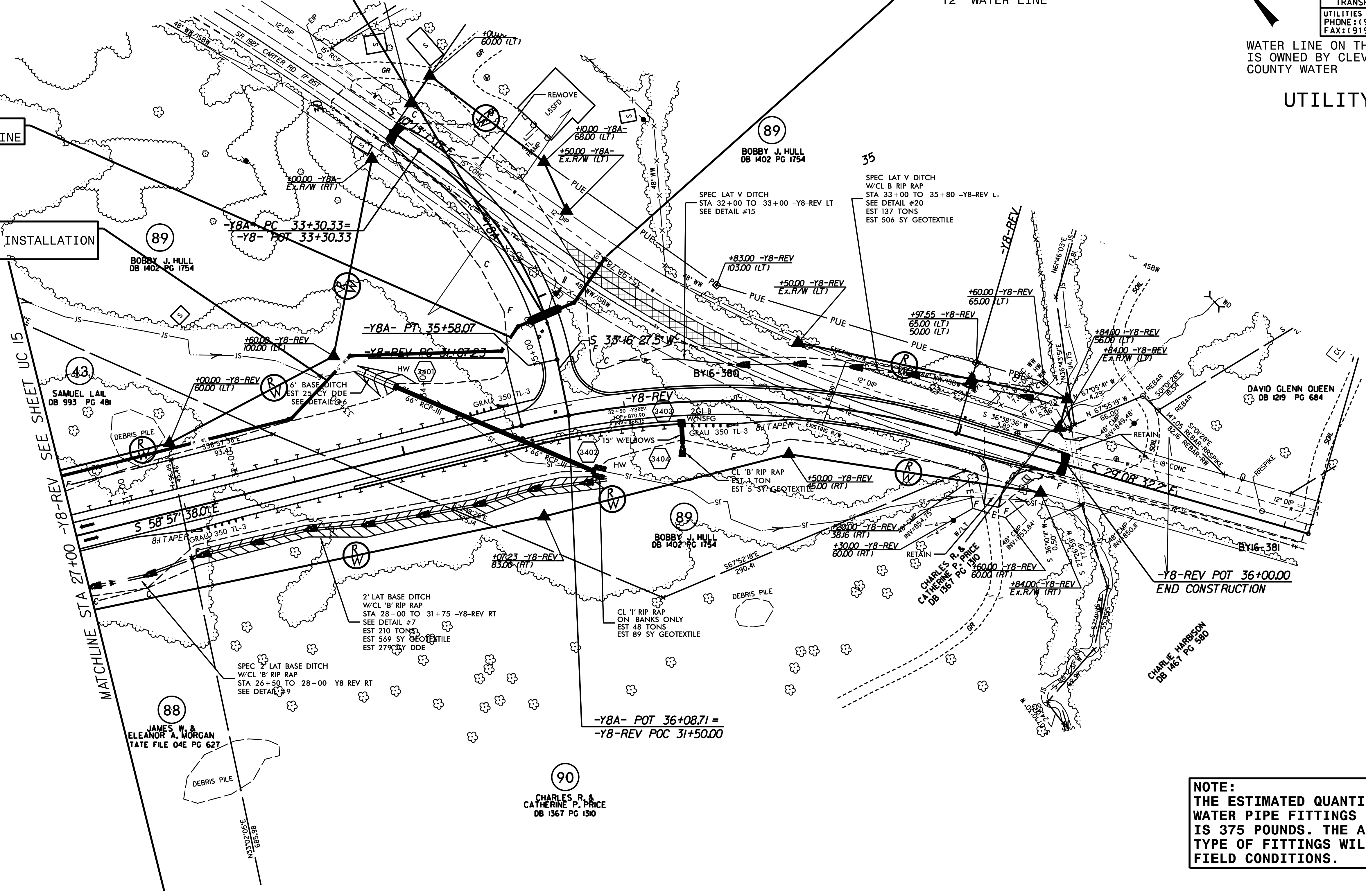
UTILITY CONSTRUCTION

PROP
30 LF 16" ENCASEMENT PIPE
INSTALLED BY OPEN CUT
W/ RESTRAINED JOINT PIPE
SEAL BOTH ENDS

PROP
6" TAPPING VALVE
INSTALLED ON EXISTING
12" WATER LINE

PROP
550 LF 6" WATER LINE

PROP
75 LF TRENCHLESS INSTALLATION
OF 6" IN SOIL
DR 9 HDPE



NOTE:
THE ESTIMATED QUANTITY OF DUCTILE IRON WATER PIPE FITTINGS ON THIS PLAN SHEET IS 375 POUNDS. THE ACTUAL QUANTITY AND TYPE OF FITTINGS WILL VARY BASED ON FIELD CONDITIONS.

REVISIONS