

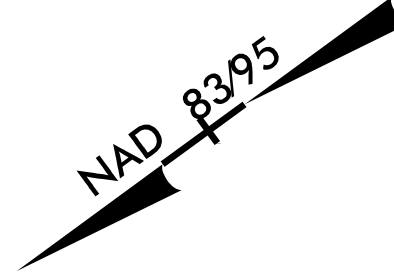
PROJECT REFERENCE NO.	SHEET NO.
R-2707C	UC-14
DESIGNED BY: VW	
DRAWN BY: VW	
CHECKED BY: MJW	
APPROVED BY: MJW	
REVISED: 1/26/17	
NORTH CAROLINA DEPARTMENT OF TRANSPORTATION UTILITIES ENGINEERING SEC. PHONE: (919) 707-6690 FAX: (919) 250-4151	
UTILITY CONSTRUCTION PLANS ONLY	



UTILITY CONSTRUCTION

WATER LINE ON THIS SHEET IS OWNED BY CLEVELAND COUNTY WATER.

SEWER FORCE MAIN IS OWNED BY THE CITY OF SHELBY.



NOTE:
 THE ESTIMATED QUANTITY OF DUCTILE IRON WATER AND SEWER PIPE FITTINGS ON THIS PLAN SHEET IS 1085 POUNDS. THE ACTUAL QUANTITY AND TYPE OF FITTINGS WILL VARY BASED ON FIELD CONDITIONS.

NOTE: INSTALL 6" PLUG TAPPED 2" AND 50 LF 2" WATER LINE. CONNECT TO EXISTING 2" WATER LINE.

MATCHLINE STA 15+00 -Y8-REV SEE SHEET UC 15

NOTE: INSTALL WATER LINE 5' INSIDE R/W

NOTE: INSTALL SEWER FORCE MAIN MIN. 18" BELOW WATER LINE

PROP 540 LF 10" FORCE MAIN SEWER INSTALLED 5' INSIDE R/W

PROP 531 LF ABANDON 10" UTILITY PIPE

PROP 3 6" GATE VALVES

PROP 1" AIR RELEASE VALVE INSTALL AT ACTUAL HIGH POINT

PROP 848 LF 6" WATER LINE

PROP 80 LF 20" ENCASUREMENT INSTALLED BY OPEN CUT W/ RESTRAINED JOINT PIPE SEAL BOTH ENDS

NOTE: CONNECT TO EXISTING SEWER 10" SEWER FORCE MAIN WITH DI SLEEVE

PROP 80 LF 16" ENCASUREMENT PIPE INSTALLED BY OPEN CUT W/ RESTRAINED JOINT PIPE SEAL BOTH ENDS

-Y9- POC 33+00.00 -Y8-REV POT 10+00.00

PROP 2'-6" C&G

PROP 551 LF ABANDON 6" UTILITY PIPE

PROP 1 6" GATE VALVE

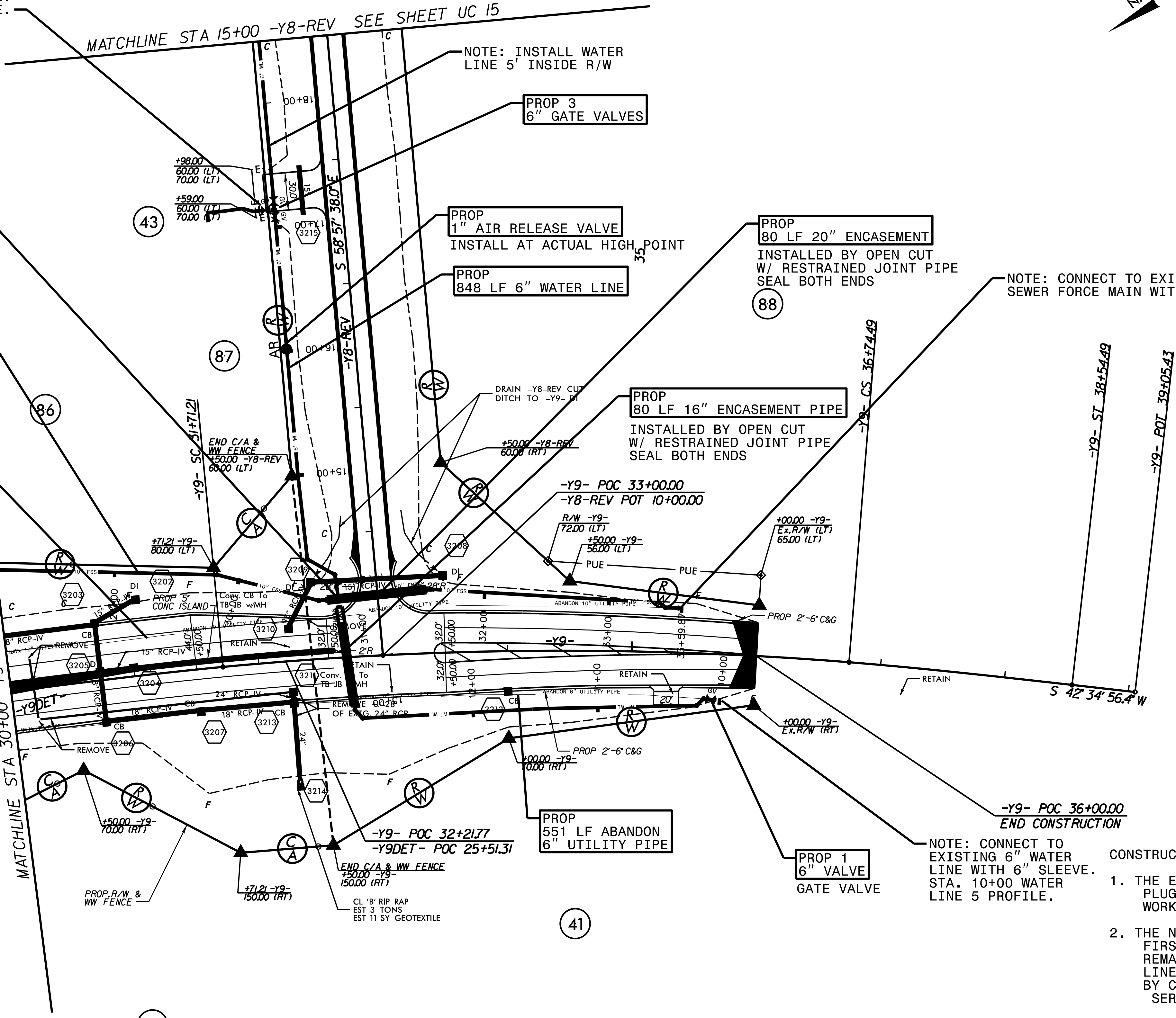
NOTE: CONNECT TO EXISTING 6" WATER LINE WITH 6" SLEEVE. STA. 10+00 WATER LINE 5 PROFILE.

CONSTRUCTION SEQUENCE FOR UC SHEETS 11, 12, 13 AND 14

1. THE EXISTING 6" WATER LINES SHALL BE PLUGGED AND ABANDONED IMMEDIATELY FOR WORK SPACE ON THE ROAD SHOULDER.
2. THE NEW 16" WATER LINE SHALL BE INSTALLED FIRST AND THE EXISTING 12" WATER LINE SHALL REMAIN IN SERVICE UNTIL THE NEW 16" WATER LINE HAS BEEN COMPLETED, TESTED AND ACCEPTED BY CLEVELAND COUNTY WATER AND THE WATER SERVICES TRANSFERRED.
3. THE EXISTING 10" SEWER FORCE MAIN SHALL REMAIN IN SERVICE UNTIL THE NEW 10" SEWER FORCE MAIN HAS BEEN INSTALLED, TESTED AND ACCEPTED BY THE CITY OF SHELBY. THE NEW 10" FORCE MAIN SHALL BE INSTALLED AFTER COMPLETION OF THE 16" WATER LINE AND MAY UTILIZE THE AREA PREVIOUSLY OCCUPIED BY 12" WATER LINE AS REQUIRED.
4. AFTER COMPLETION OF THE NEW FORCE MAIN, THE EXISTING FORCE MAIN SHALL BE ABANDONED.

REVISIONS

MATCHLINE STA 30+00 -Y9- SEE SHEET UC 11



42

41

43

87

86

88