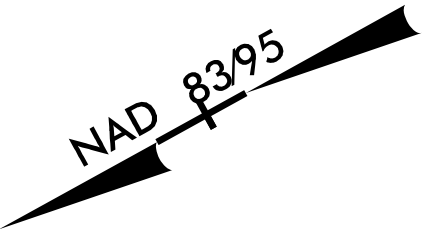
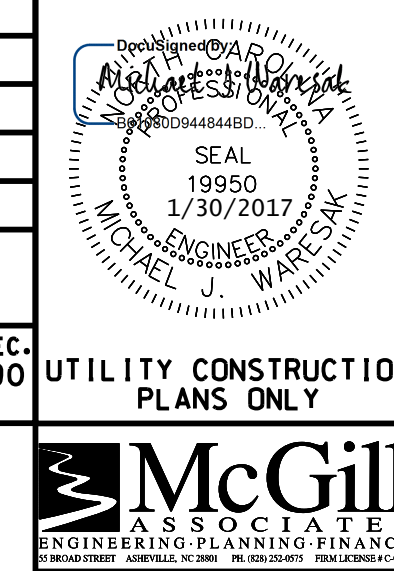


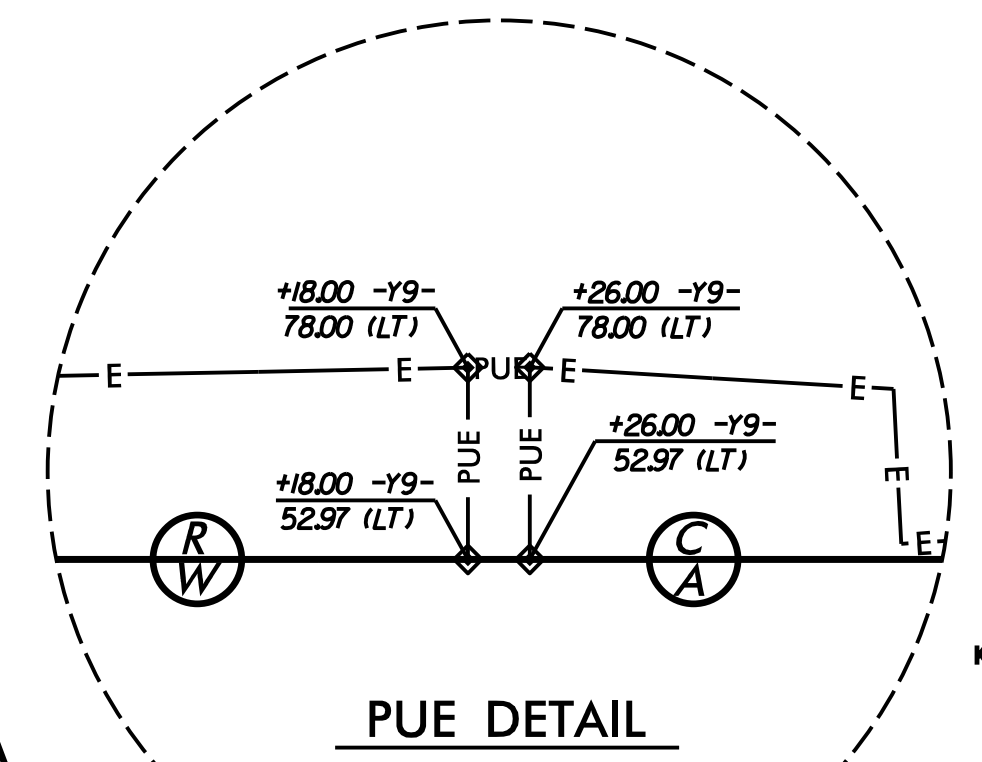
PROJECT REFERENCE NO.	SHEET NO.
R-2707C	UC-13
DESIGNED BY: VW	
DRAWN BY: VW	
CHECKED BY: MJW	
APPROVED BY: MJW	
REVISED: 1/26/17	
NORTH CAROLINA DEPARTMENT OF TRANSPORTATION	
UTILITIES ENGINEERING SEC. PHONE: (919) 707-6690 FAX: (919) 250-4151	UTILITY CONSTRUCTION PLANS ONLY



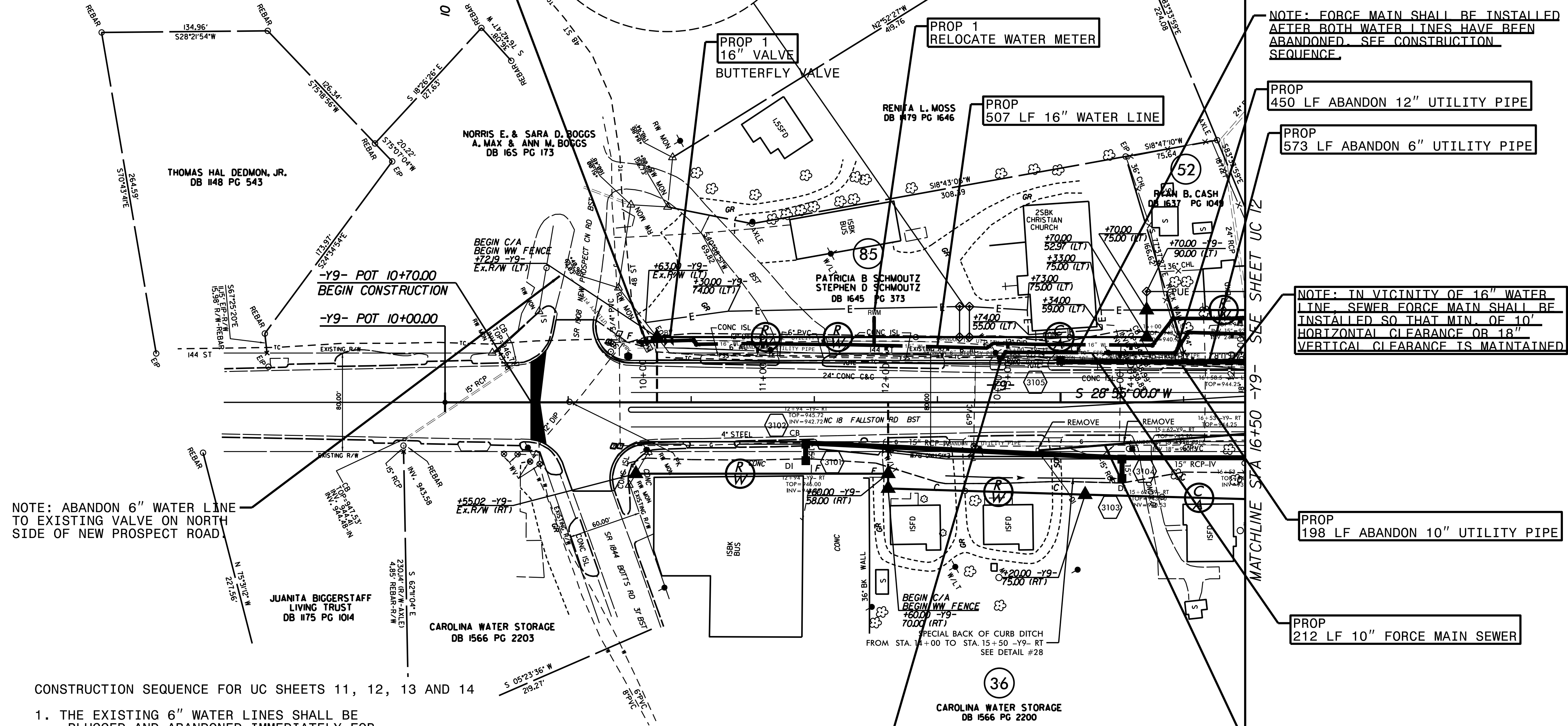
WATER LINE ON THIS SHEET IS OWNED BY CLEVELAND COUNTY WATER.

SEWER FORCE MAIN IS OWNED BY CITY OF SHELBY.

UTILITY CONSTRUCTION



NOTE: CONNECT TO EXISTING 12" WATER LINE WITH 16"X12" REDUCER. NOTE INSTALL REDUCER MIN. 10' FROM BUTTERFLY VALVE. STA. 10+00 WATER LINE 4 PROFILE.



NOTE: FORCE MAIN SHALL BE INSTALLED AFTER BOTH WATER LINES HAVE BEEN ABANDONED. SEE CONSTRUCTION SEQUENCE.

PROP 450 LF ABANDON 12" UTILITY PIPE

PROP 573 LF ABANDON 6" UTILITY PIPE

NOTE: IN VICINITY OF 16" WATER LINE, SEWER FORCE MAIN SHALL BE INSTALLED SO THAT MIN. OF 10' HORIZONTAL CLEARANCE OR 18" VERTICAL CLEARANCE IS MAINTAINED.

PROP 198 LF ABANDON 10" UTILITY PIPE

PROP 212 LF 10" FORCE MAIN SEWER

PROP 293 LF ABANDON 6" UTILITY PIPE

NOTE: ABANDON 6" WATER LINE TO EXISTING VALVE ON NORTH SIDE OF NEW PROSPECT ROAD.

NOTE: CONNECT NEW 10" SEWER FORCE MAIN TO EXISTING 10" FORCE MAIN WITH FITTINGS AS REQUIRED. STA. 10+00 10" SEWER FORCE MAIN PROFILE

NOTE: THE ESTIMATED QUANTITY OF DUCTILE IRON WATER PIPE FITTINGS ON THIS PLAN SHEET IS 2625 POUNDS. THE ACTUAL QUANTITY AND TYPE OF FITTINGS WILL VARY BASED ON FIELD CONDITIONS.

CONSTRUCTION SEQUENCE FOR UC SHEETS 11, 12, 13 AND 14

1. THE EXISTING 6" WATER LINES SHALL BE PLUGGED AND ABANDONED IMMEDIATELY FOR WORK SPACE ON THE ROAD SHOULDER.
2. THE NEW 16" WATER LINE SHALL BE INSTALLED FIRST AND THE EXISTING 12" WATER LINE SHALL REMAIN IN SERVICE UNTIL THE NEW 16" WATER LINE HAS BEEN COMPLETED, TESTED AND ACCEPTED BY CLEVELAND COUNTY WATER AND THE WATER SERVICES TRANSFERRED.
3. THE EXISTING 10" SEWER FORCE MAIN SHALL REMAIN IN SERVICE UNTIL THE NEW 10" SEWER FORCE MAIN HAS BEEN INSTALLED, TESTED AND ACCEPTED BY THE CITY OF SHELBY. THE NEW 10" FORCE MAIN SHALL BE INSTALLED AFTER COMPLETION OF THE 16" WATER LINE AND MAY UTILIZE THE AREA PREVIOUSLY OCCUPIED BY 12" WATER LINE AS REQUIRED.
4. AFTER COMPLETION OF THE NEW FORCE MAIN, THE EXISTING FORCE MAIN SHALL BE ABANDONED.

REVISIONS