

5/14/99

PROJECT REFERENCE NO. R-2707C	SHEET NO. UC-12
DESIGNED BY: VW	
DRAWN BY: VW	
CHECKED BY: MJW	
APPROVED BY: MJW	
REVISD BY: 2/1/17	UTILITY CONSTRUCTION PLANS ONLY
NORTH CAROLINA DEPARTMENT OF TRANSPORTATION UTILITIES ENGINEERING SECTION PHONE: (919) 707-6690 FAX: (919) 250-4151	



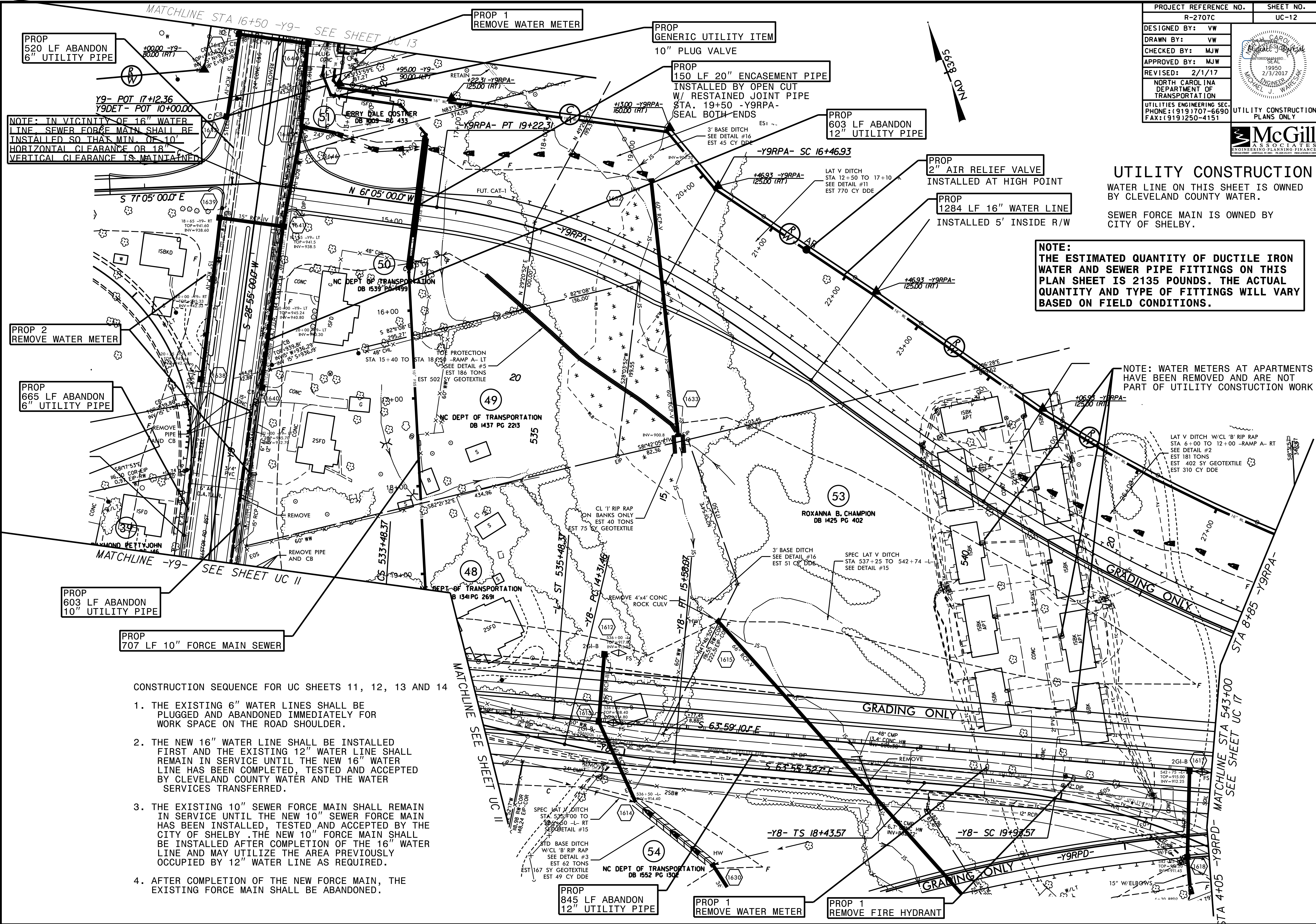
UTILITY CONSTRUCTION

WATER LINE ON THIS SHEET IS OWNED BY CLEVELAND COUNTY WATER.

SEWER FORCE MAIN IS OWNED BY CITY OF SHELBY.

NOTE:
THE ESTIMATED QUANTITY OF DUCTILE IRON WATER AND SEWER PIPE FITTINGS ON THIS PLAN SHEET IS 2135 POUNDS. THE ACTUAL QUANTITY AND TYPE OF FITTINGS WILL VARY BASED ON FIELD CONDITIONS.

NOTE: WATER METERS AT APARTMENTS HAVE BEEN REMOVED AND ARE NOT PART OF UTILITY CONSTRUCTION WORK



NOTE: IN VICINITY OF 16" WATER LINE SEWER FORCE MAIN SHALL BE INSTALLED SO THAT MIN. OF 10' HORIZONTAL CLEARANCE OR 18' VERTICAL CLEARANCE IS MAINTAINED

PROP 2 REMOVE WATER METER

PROP 665 LF ABANDON 6" UTILITY PIPE

PROP 603 LF ABANDON 10" UTILITY PIPE

PROP 707 LF 10" FORCE MAIN SEWER

CONSTRUCTION SEQUENCE FOR UC SHEETS 11, 12, 13 AND 14

1. THE EXISTING 6" WATER LINES SHALL BE PLUGGED AND ABANDONED IMMEDIATELY FOR WORK SPACE ON THE ROAD SHOULDER.
2. THE NEW 16" WATER LINE SHALL BE INSTALLED FIRST AND THE EXISTING 12" WATER LINE SHALL REMAIN IN SERVICE UNTIL THE NEW 16" WATER LINE HAS BEEN COMPLETED, TESTED AND ACCEPTED BY CLEVELAND COUNTY WATER AND THE WATER SERVICES TRANSFERRED.
3. THE EXISTING 10" SEWER FORCE MAIN SHALL REMAIN IN SERVICE UNTIL THE NEW 10" SEWER FORCE MAIN HAS BEEN INSTALLED, TESTED AND ACCEPTED BY THE CITY OF SHELBY. THE NEW 10" FORCE MAIN SHALL BE INSTALLED AFTER COMPLETION OF THE 16" WATER LINE AND MAY UTILIZE THE AREA PREVIOUSLY OCCUPIED BY 12" WATER LINE AS REQUIRED.
4. AFTER COMPLETION OF THE NEW FORCE MAIN, THE EXISTING FORCE MAIN SHALL BE ABANDONED.

PROP 845 LF ABANDON 12" UTILITY PIPE

PROP 1 REMOVE WATER METER

PROP 1 REMOVE FIRE HYDRANT