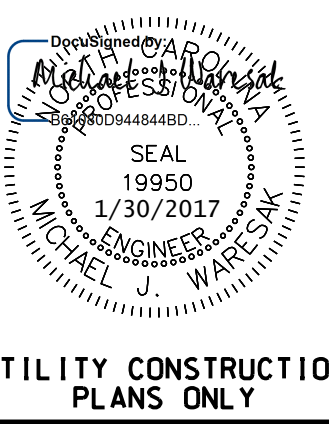


PROJECT REFERENCE NO.	SHEET NO.
R-2707C	UC-9
DESIGNED BY: VW	
DRAWN BY: VW	
CHECKED BY: MJW	
APPROVED BY: MJW	
REVISED: 1/26/17	
NORTH CAROLINA DEPARTMENT OF TRANSPORTATION	
UTILITIES ENGINEERING SEC. PHONE: (919) 707-6690 FAX: (919) 1250-4151	UTILITY CONSTRUCTION PLANS ONLY

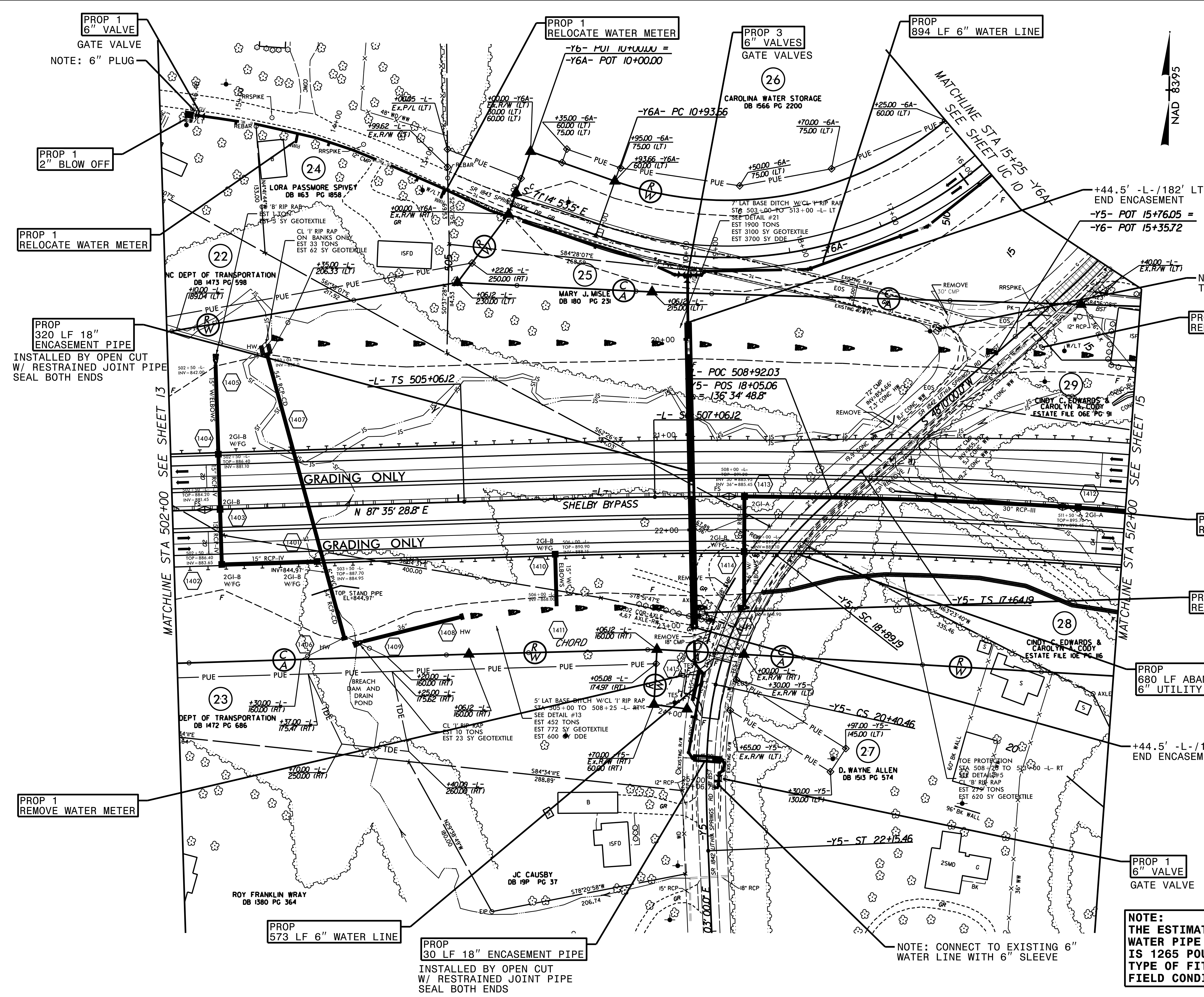


WATER LINE ON THIS SHEET IS OWNED BY CLEVELAND COUNTY WATER

**UTILITY CONSTRUCTION**



NAD 8395



PROP 1 6" VALVE GATE VALVE  
NOTE: 6" PLUG

PROP 1 2" BLOW OFF

PROP 1 RELOCATE WATER METER

PROP 320 LF 18" ENCASEMENT PIPE  
INSTALLED BY OPEN CUT W/ RESTRAINED JOINT PIPE SEAL BOTH ENDS

PROP 1 REMOVE WATER METER

PROP 573 LF 6" WATER LINE

PROP 30 LF 18" ENCASEMENT PIPE  
INSTALLED BY OPEN CUT W/ RESTRAINED JOINT PIPE SEAL BOTH ENDS

NOTE: WATER METERS TO BE RELOCATED

PROP 1 REMOVE WATER METER

PROP 1 REMOVE WATER METER

PROP 1 REMOVE WATER METER

PROP 680 LF ABANDON 6" UTILITY PIPE

PROP 1 6" VALVE GATE VALVE

**NOTE:**  
THE ESTIMATED QUANTITY OF DUCTILE IRON WATER PIPE FITTINGS ON THIS PLAN SHEET IS 1265 POUNDS. THE ACTUAL QUANTITY AND TYPE OF FITTINGS WILL VARY BASED ON FIELD CONDITIONS.

NOTE: CONNECT TO EXISTING 6" WATER LINE WITH 6" SLEEVE

REVISIONS