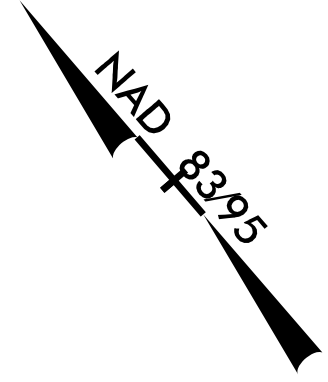


PROJECT REFERENCE NO.	SHEET NO.
R-2707C	UC-8
DESIGNED BY: VW	
DRAWN BY: VW	
CHECKED BY: MJW	
APPROVED BY: MJW	
REVISED: 1/26/17	UTILITY CONSTRUCTION PLANS ONLY
NORTH CAROLINA DEPARTMENT OF TRANSPORTATION UTILITIES ENGINEERING SEC. PHONE: (919) 707-6690 FAX: (919) 250-4151	

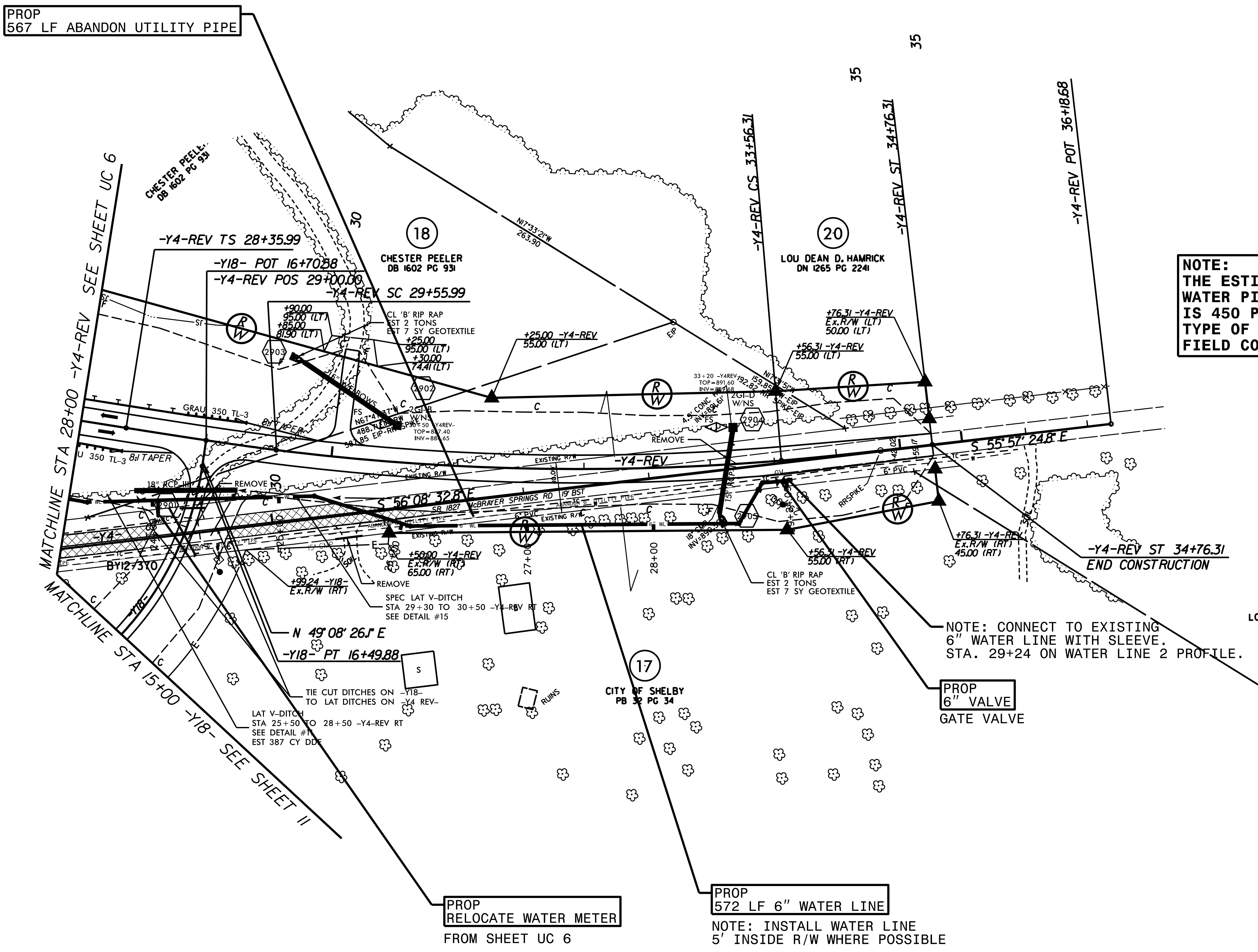
WATER LINE ON THIS SHEET IS OWNED BY CLEVELAND COUNTY WATER

McGill ASSOCIATES
ENGINEERING PLANNING FINANCE

UTILITY CONSTRUCTION



PROP
567 LF ABANDON UTILITY PIPE



NOTE:
THE ESTIMATED QUANTITY OF DUCTILE IRON WATER PIPE FITTINGS ON THIS PLAN SHEET IS 450 POUNDS. THE ACTUAL QUANTITY AND TYPE OF FITTINGS WILL VARY BASED ON FIELD CONDITIONS.

NOTE: CONNECT TO EXISTING 6" WATER LINE WITH SLEEVE. STA. 29+24 ON WATER LINE 2 PROFILE.

PROP
6" VALVE
GATE VALVE

PROP
RELOCATE WATER METER
FROM SHEET UC 6

PROP
572 LF 6" WATER LINE
NOTE: INSTALL WATER LINE 5' INSIDE R/W WHERE POSSIBLE

MATCHLINE STA 28+00 -Y4-REV SEE SHEET UC 6

MATCHLINE STA 15+00 -Y18- SEE SHEET 11

-Y4-REV POT 36+18.68

-Y4-REV CS 33+56.31

-Y4-REV ST 34+76.31

-Y4-REV ST 34+76.31
END CONSTRUCTION

-Y18- PT 16+49.88

-Y4-REV TS 28+35.99

-Y18- POT 16+70.88

-Y4-REV POS 29+00.00

-Y4-REV SC 29+55.99

N 49° 08' 26" E

LAT V-DITCH STA 25+50 TO 28+50 -Y4-REV RT
SEE DETAIL #1
EST 387 CY DDE

SPEC LAT V-DITCH STA 29+30 TO 30+50 -Y4-REV RT
SEE DETAIL #15

GRAU 350 TL-3

BY12-3Y0

TIE CUT DITCHES ON -Y18- TO LAT DITCHES ON -Y4- REV-

REMOVE

REMOVE

REMOVE

REMOVE

REMOVE

REMOVE

REMOVE

REMOVE