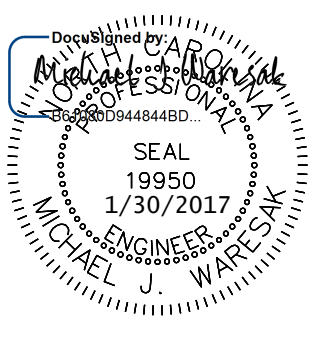


PROJECT REFERENCE NO.	SHEET NO.
R-2707C	UC-7
DESIGNED BY: VW	
DRAWN BY: VW	
CHECKED BY: MJW	
APPROVED BY: MJW	
REVISED: 1/25/17	
NORTH CAROLINA DEPARTMENT OF TRANSPORTATION	
UTILITIES ENGINEERING SEC.	
PHONE: (919) 707-6690	
FAX: (919) 250-4151	
UTILITY CONSTRUCTION PLANS ONLY	



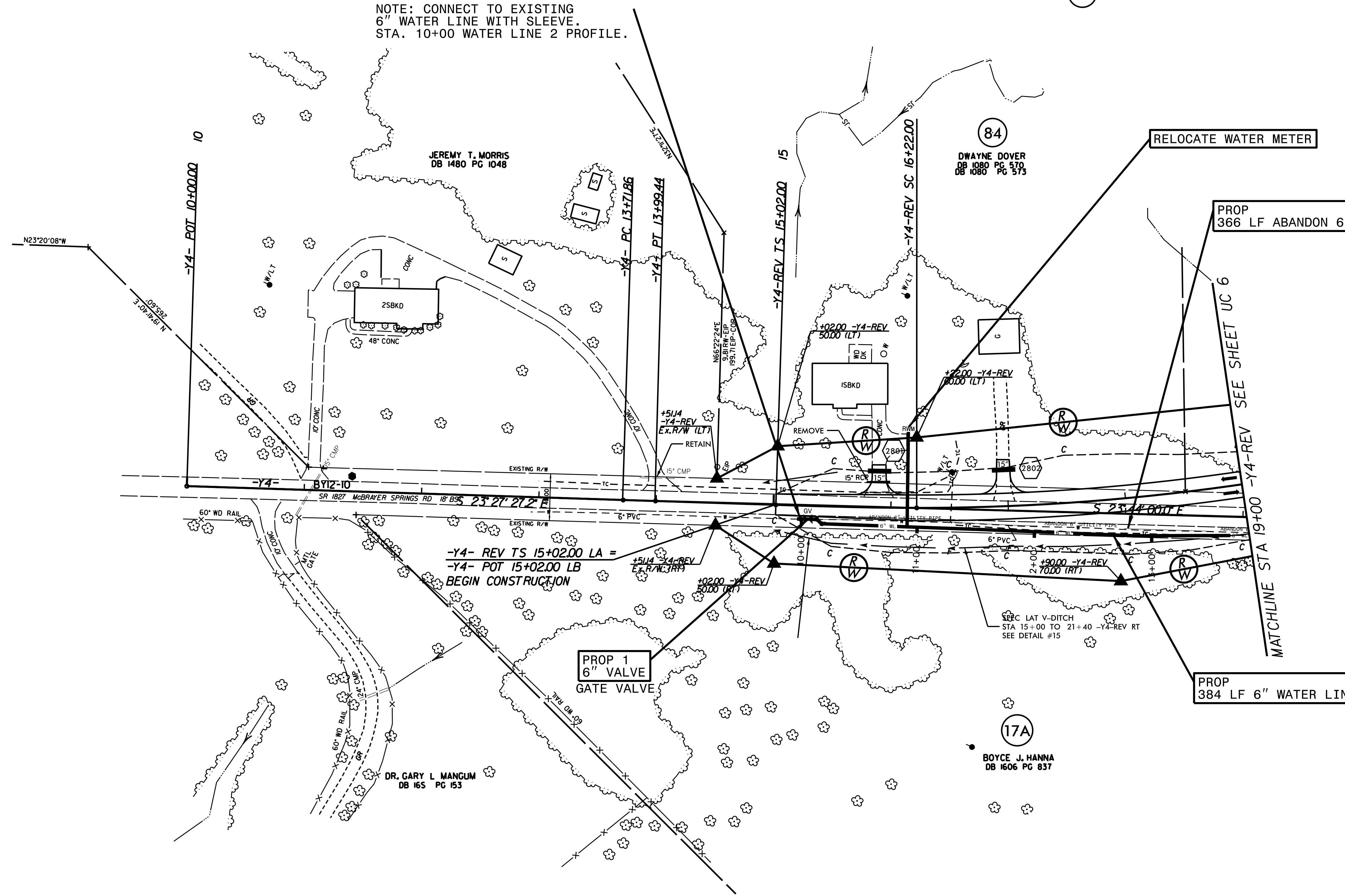
WATER LINE ON THIS SHEET IS OWNED BY CLEVELAND COUNTY WATER

McGill ASSOCIATES
ENGINEERING PLANNING FINANCE

UTILITY CONSTRUCTION

NOTE:
THE ESTIMATED QUANTITY OF DUCTILE IRON WATER PIPE FITTINGS ON THIS PLAN SHEET IS 175 POUNDS. THE ACTUAL QUANTITY AND TYPE OF FITTINGS WILL VARY BASED ON FIELD CONDITIONS.

NOTE: CONNECT TO EXISTING 6" WATER LINE WITH SLEEVE. STA. 10+00 WATER LINE 2 PROFILE.



19

84

DWAYNE DOVER
DB 1080 PG 570
DB 1080 PG 573

RELOCATE WATER METER

PROP
366 LF ABANDON 6" UTILITY PIPE

PROP
384 LF 6" WATER LINE

PROP 1
6" VALVE
GATE VALVE

17A

BOYCE J. HANNA
DB 1606 PG 837

DR. GARY L. MANCUM
DB 165 PG 153

REVISIONS