

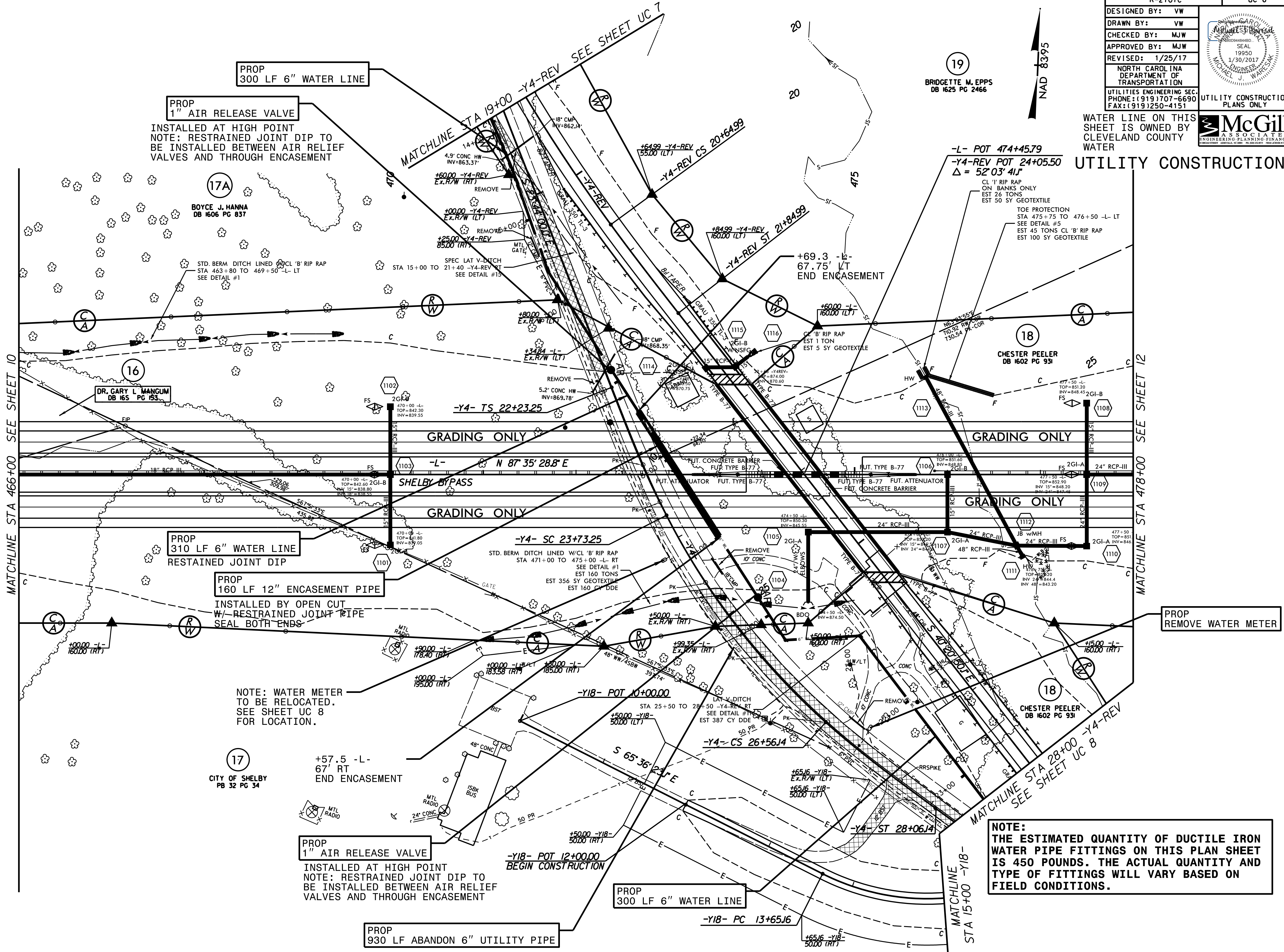
PROJECT REFERENCE NO.	SHEET NO.
R-2707C	UC-6
DESIGNED BY: VW	
DRAWN BY: VW	
CHECKED BY: MJW	
APPROVED BY: MJW	
REVISED: 1/25/17	NORTH CAROLINA DEPARTMENT OF TRANSPORTATION UTILITIES ENGINEERING SEC. PHONE: (919) 707-6690 FAX: (919) 250-4151
UTILITY CONSTRUCTION PLANS ONLY	

WATER LINE ON THIS SHEET IS OWNED BY CLEVELAND COUNTY WATER

McGill
 ASSOCIATES
 ENGINEERING PLANNING FINANCE

19
 BRIDGETTE M. EPPS
 DB 1625 PG 2466
 NAD 8395

REVISIONS
 R/W REVISION 9-2-15 (PCP) - PARCEL I/A - CHANGED PROPERTY OWNER NAMES AND DEED INFORMATION.



PROP
 1" AIR RELEASE VALVE
 INSTALLED AT HIGH POINT
 NOTE: RESTRAINED JOINT DIP TO
 BE INSTALLED BETWEEN AIR RELIEF
 VALVES AND THROUGH ENCASEMENT

PROP
 310 LF 6" WATER LINE
 RESTRAINED JOINT DIP

PROP
 160 LF 12" ENCASEMENT PIPE
 INSTALLED BY OPEN CUT
 W/ RESTRAINED JOINT PIPE
 SEAL BOTH ENDS

NOTE: WATER METER
 TO BE RELOCATED.
 SEE SHEET UC 8
 FOR LOCATION.

PROP
 1" AIR RELEASE VALVE
 INSTALLED AT HIGH POINT
 NOTE: RESTRAINED JOINT DIP TO
 BE INSTALLED BETWEEN AIR RELIEF
 VALVES AND THROUGH ENCASEMENT

PROP
 930 LF ABANDON 6" UTILITY PIPE

NOTE:
 THE ESTIMATED QUANTITY OF DUCTILE IRON
 WATER PIPE FITTINGS ON THIS PLAN SHEET
 IS 450 POUNDS. THE ACTUAL QUANTITY AND
 TYPE OF FITTINGS WILL VARY BASED ON
 FIELD CONDITIONS.

MATCHLINE STA 466+00 SEE SHEET 10

MATCHLINE STA 478+00 SEE SHEET 12

MATCHLINE STA 19+00 -Y4-REV SEE SHEET UC 7

MATCHLINE STA 28+00 -Y4-REV
 SEE SHEET UC 8

MATCHLINE
 STA 15+00 -Y18-

GRADING ONLY

GRADING ONLY

GRADING ONLY

GRADING ONLY

-L- N 87° 35' 28.8" E

SHELBY BYPASS

-Y4- SC 23+73.25

-Y18- POT 10+00.00

-Y4- CS 26+56.14

-Y4- ST 28+06.14

-Y18- POT 12+00.00
 BEGIN CONSTRUCTION

-Y18- PC 13+65.16

4.9" CONC HW
 INV=863.37'

+60.00 -Y4-REV
 EX.R/W (LT)

+25.00 -Y4-REV
 85.00 (RT)

+80.00 -Y4-REV
 EX.R/W (LT)

-Y4- TS 22+23.25

18" RCP-III

24" RCP-III

48" RCP-III

54" RCP-III

60" RCP-III

66" RCP-III

72" RCP-III

78" RCP-III

84" RCP-III

90" RCP-III

96" RCP-III