

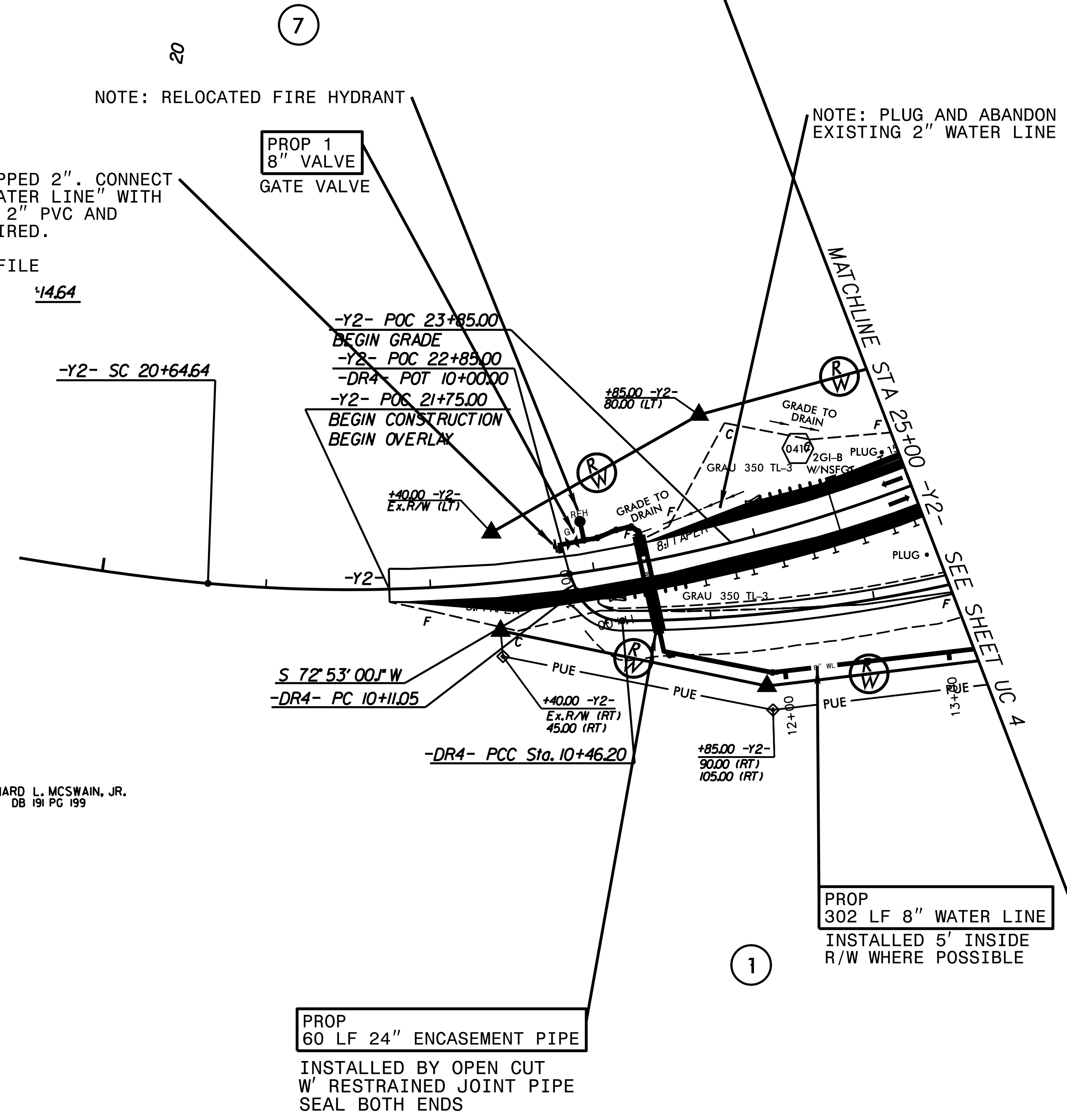
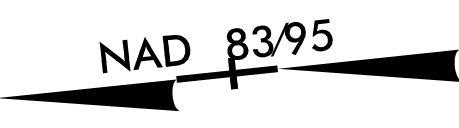
PROJECT REFERENCE NO.	SHEET NO.
R-2707C	UC-5
DESIGNED BY: VW	
DRAWN BY: VW	
CHECKED BY: MJW	
APPROVED BY: MJW	
REVISED: 1/25/17	
NORTH CAROLINA DEPARTMENT OF TRANSPORTATION	
UTILITIES ENGINEERING SEC. PHONE: (919) 707-6690 FAX: (919) 250-4151	UTILITY CONSTRUCTION PLANS ONLY

WATER LINE ON THIS SHEET IS OWNED BY CITY OF SHELBY



UTILITY CONSTRUCTION

**NOTE:**  
 THE ESTIMATED QUANTITY OF DUCTILE IRON WATER PIPE FITTINGS ON THIS PLAN SHEET IS 660 POUNDS. THE ACTUAL QUANTITY AND TYPE OF FITTINGS WILL VARY BASED ON FIELD CONDITIONS.



NOTE: 8" PLUG TAPPED 2". CONNECT TO EXISTING 2" WATER LINE WITH SHORT SECTION OF 2" PVC AND FITTINGS AS REQUIRED.  
 STA. 10+00  
 WATER LINE 1 PROFILE

NOTE: RELOCATED FIRE HYDRANT

NOTE: PLUG AND ABANDON EXISTING 2" WATER LINE

LEONARD L. MCSWAIN, JR.  
 DB 191 PG 199