

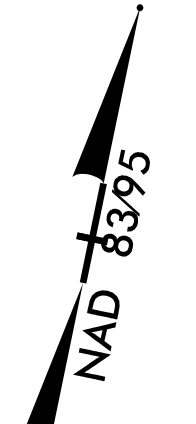
|                                                                                                                           |                                 |
|---------------------------------------------------------------------------------------------------------------------------|---------------------------------|
| PROJECT REFERENCE NO.                                                                                                     | SHEET NO.                       |
| R-2707C                                                                                                                   | UC-4                            |
| DESIGNED BY: VW                                                                                                           |                                 |
| DRAWN BY: VW                                                                                                              |                                 |
| CHECKED BY: MJW                                                                                                           |                                 |
| APPROVED BY: MJW                                                                                                          |                                 |
| REVISED: 1/25/17                                                                                                          | UTILITY CONSTRUCTION PLANS ONLY |
| NORTH CAROLINA DEPARTMENT OF TRANSPORTATION<br>UTILITIES ENGINEERING SEC.<br>PHONE: (919) 707-6690<br>FAX: (919) 250-4151 |                                 |

**NOTE:**  
 THE ESTIMATED QUANTITY OF DUCTILE IRON WATER PIPE FITTINGS ON THIS PLAN SHEET IS 1185 POUNDS. THE ACTUAL QUANTITY AND TYPE OF FITTINGS WILL VARY BASED ON FIELD CONDITIONS.

PROP  
 1167 LF 8" WATER LINE  
 INSTALLED 5' INSIDE  
 R/W WHERE POSSIBLE

MATCHLINE STA 25+00 -Y2- SEE SHEET UC 05

DEBBIE ANN WEBBER  
 DB 1240 PG 632



WATER LINE ON THIS SHEET IS OWNED BY CITY OF SHELBY

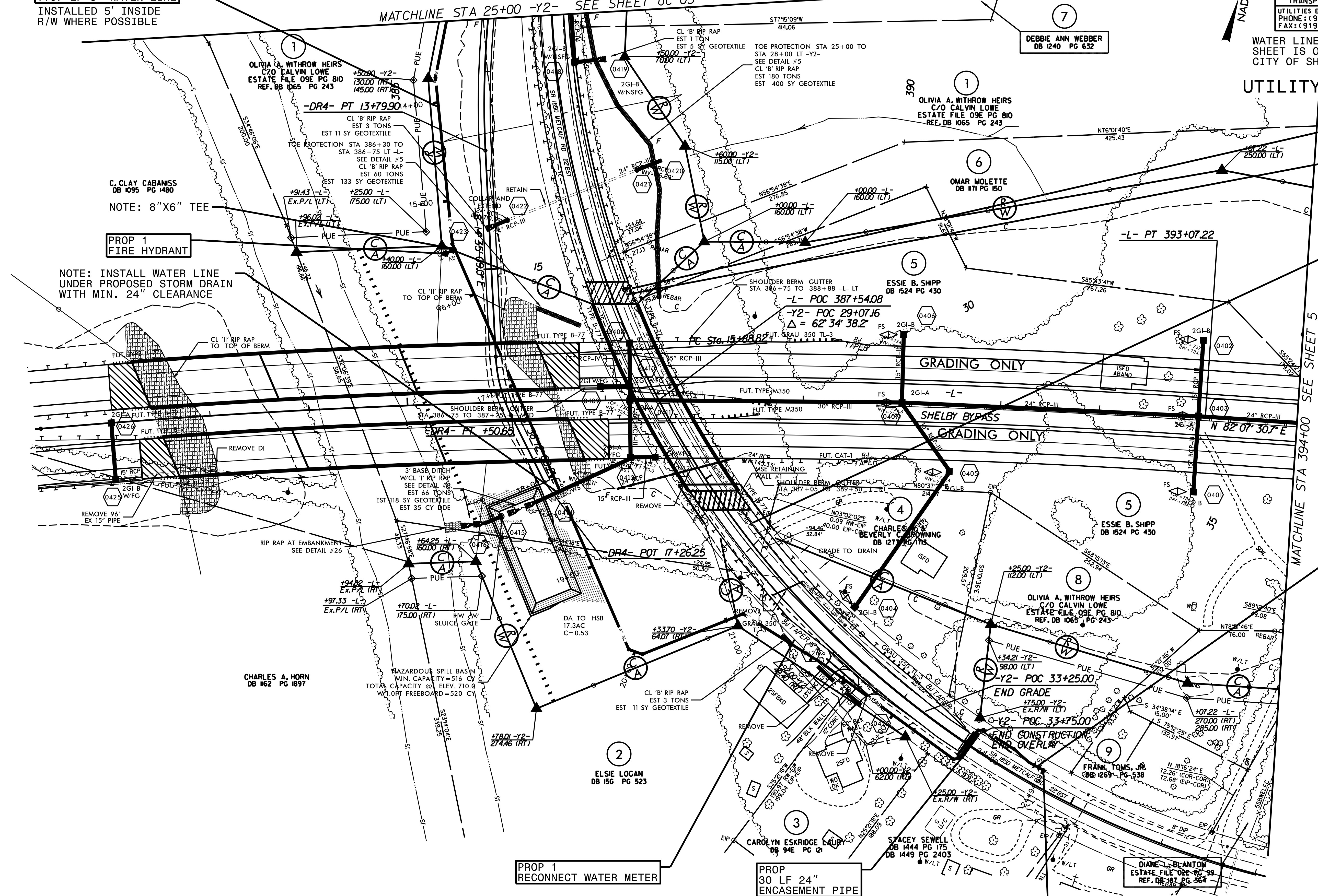
**UTILITY CONSTRUCTION**

PROP 1 RELOCATE EXISTING FIRE HYDRANT

NOTE: EXISTING 8" DIP ENDS AT FIRE HYDRANT AND BECOMES 2" PVC

PROP 635 LF ABANDON 8" UTILITY PIPE

PROP 1 8" VALVE GATE VALVE



NOTE: INSTALL WATER LINE UNDER PROPOSED STORM DRAIN WITH MIN. 24" CLEARANCE

PROP 1 FIRE HYDRANT

NOTE: 8"x6" TEE

PROP 1 RECONNECT WATER METER

PROP 30 LF 24" ENCASEMENT PIPE  
 INSTALLED BY OPEN CUT  
 W/ RESTRAINED JOINT PIPE  
 SEAL BOTH ENDS

NOTE: CONNECT TO EXISTING 8" DIP WATER LINE WITH 8" SLEEVE

MATCHLINE STA 394+00 SEE SHEET 5