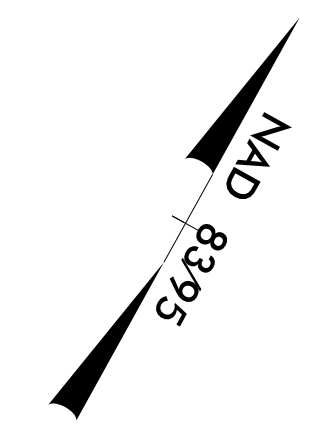


PROJECT REFERENCE NO. R-2707C		SHEET NO. EC-60A/CONST.20A	
RW SHEET NO.		HYDRAULICS ENGINEER	
ROADWAY DESIGN ENGINEER			

-YIOREV-  
 PI Sta 19+95.80  
 $\Delta = 22^\circ 54' 35.3" (LT)$   
 $D = 2^\circ 23' 14.4"$   
 $L = 959.64'$   
 $T = 486.32'$   
 $R = 2,400.00'$

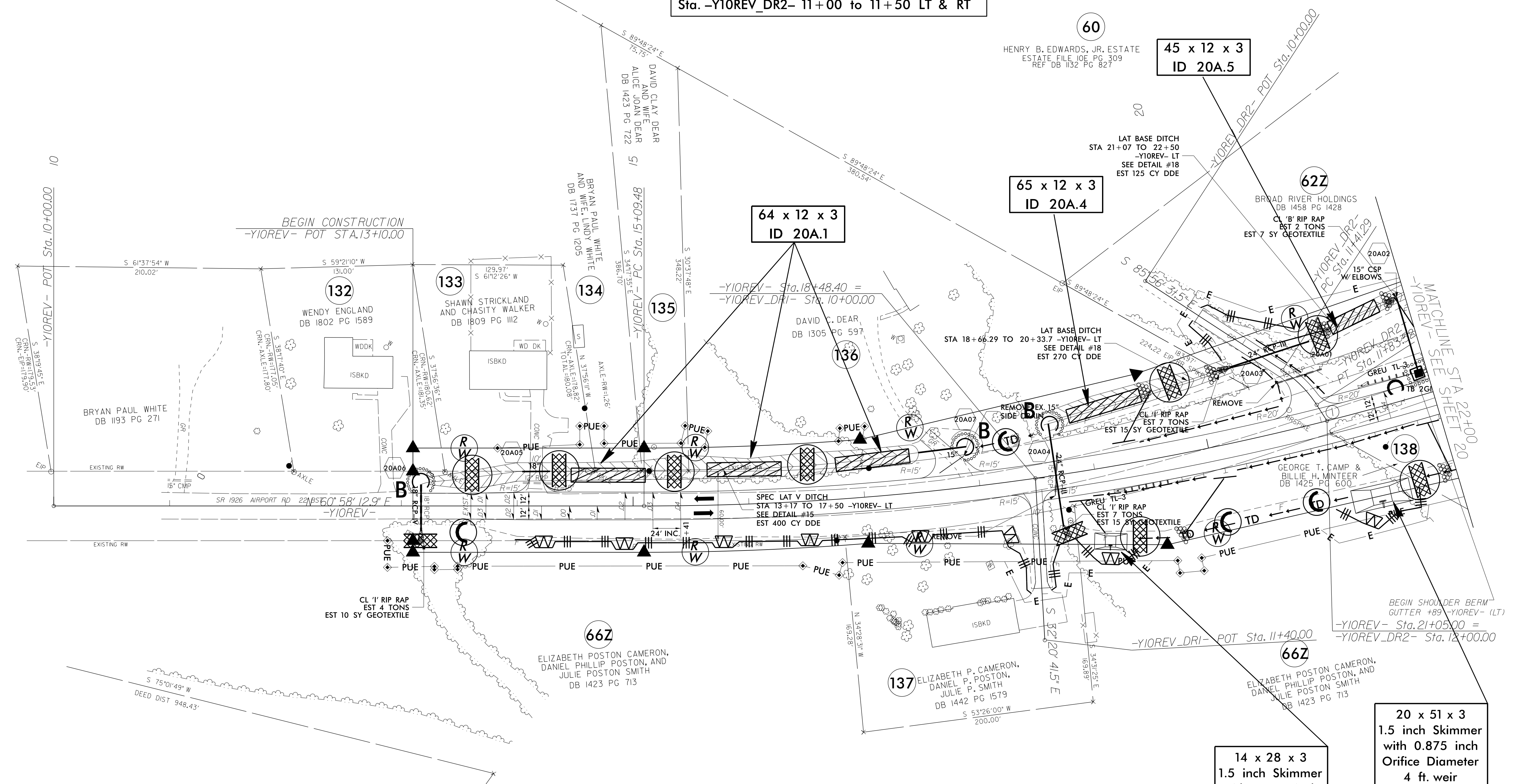
-YIOREV\_DR2-  
 PI Sta 11+62.72  
 $\Delta = 24^\circ 11' 49.2" (RT)$   
 $D = 57^\circ 17' 44.8"$   
 $L = 42.23'$   
 $T = 21.44'$   
 $R = 100.00'$   
 (1) S 61° 44' 42.3" E



NOTE:  
 UTILIZE TEMPORARY SEDIMENT BASIN OR SPECIAL STILLING BASIN(S) AS STILLING BASIN WHERE APPLICABLE.

Place Matting for Erosion Control  
 on Slope as Work Allows.  
 Sta. -YIOREV- 18+50 to Sta. 22+00 LT & RT  
 Sta. -YIOREV\_DR1- 10+40 to 10+70 LT & RT  
 Sta. -YIOREV\_DR2- 11+00 to 11+50 LT & RT

REVISIONS  
 CONST. REV. 03/XX/2020-NEW SHEET, ADDED YIOREV AND PARCELS 132 TO 140, HN



INSTALL MATTING FOR  
 EROSION CONTROL IN THE  
 PROPOSED DITCH LINES -YIO-.

14 x 28 x 3  
 1.5 inch Skimmer  
 with 0.375 inch  
 Orifice Diameter  
 4 ft. weir  
 ID 20A.2

20 x 51 x 3  
 1.5 inch Skimmer  
 with 0.875 inch  
 Orifice Diameter  
 4 ft. weir  
 ID 20A.3