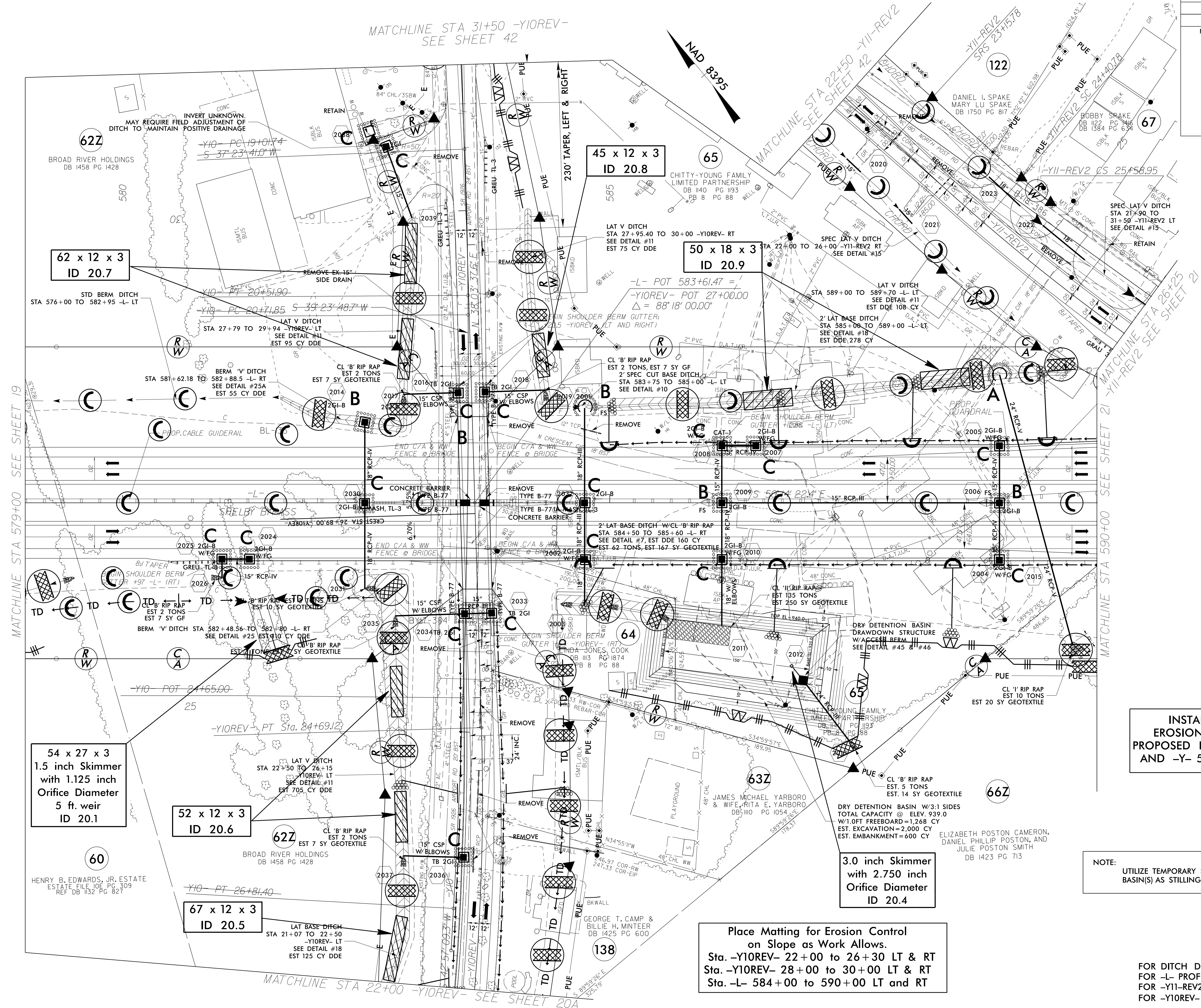


|  |                                    |
|--|------------------------------------|
| PROJECT REFERENCE NO.<br><b>R-2707C</b>        | SHEET NO.<br><b>EC-60/CONST.20</b> |
| RW SHEET NO.<br><b>ROADWAY DESIGN ENGINEER</b> | HYDRAULICS ENGINEER                |

REVISIONS  
 CONST. REV ON LET PROJECT 5-30-19 (TEH) - REVISED -L- FROM GRADING ONLY TO PAVING, ADDED NOISE WALL 7 AND SINGLE FACED BARRIER ALONG -L- (RT)  
 CONST. REV ON LET PROJECT 5-30-19 (TEH) - REVISED -L- FROM GRADING ONLY TO PAVING, ADDED NOISE WALL 7 AND SINGLE FACED BARRIER ALONG -L- (RT)  
 CONST. REV 04/XX/2021-REMOVED -Y10- ALIGNMENT AND ADDED -Y10REV- AND BRIDGE, REMOVED NOISE WALL ON -L- RIGHT AND ADJUSTED DRAINAGE TO THE PLANS ACCORDINGLY. MODIFIED AND ADDED RW AND EASEMENT LIMITS ON -Y10REV- AND -L- ADDED 2 CLAIMS TO PARCELS 6263.65 AND ADDED PARCEL 140.7H



**INSTALL MATTING FOR EROSION CONTROL IN THE PROPOSED DITCH LINES ON -Y10- AND -Y- 581+62 TO 582+88 LT**

NOTE: UTILIZE TEMPORARY SEDIMENT BASIN OR SPECIAL STILLING BASIN(S) AS STILLING BASIN WHERE APPLICABLE.

**Place Matting for Erosion Control on Slope as Work Allows.**  
 Sta. -Y10REV- 22+00 to 26+30 LT & RT  
 Sta. -Y10REV- 28+00 to 30+00 LT & RT  
 Sta. -L- 584+00 to 590+00 LT and RT

FOR DITCH DETAILS SEE SHEETS 2D-1 AND 2D-2  
 FOR -L- PROFILE SEE SHEET 52  
 FOR -Y11-REV2 PROFILE SEE SHEET 66  
 FOR -Y10REV- PROFILE SEE SHEET 78