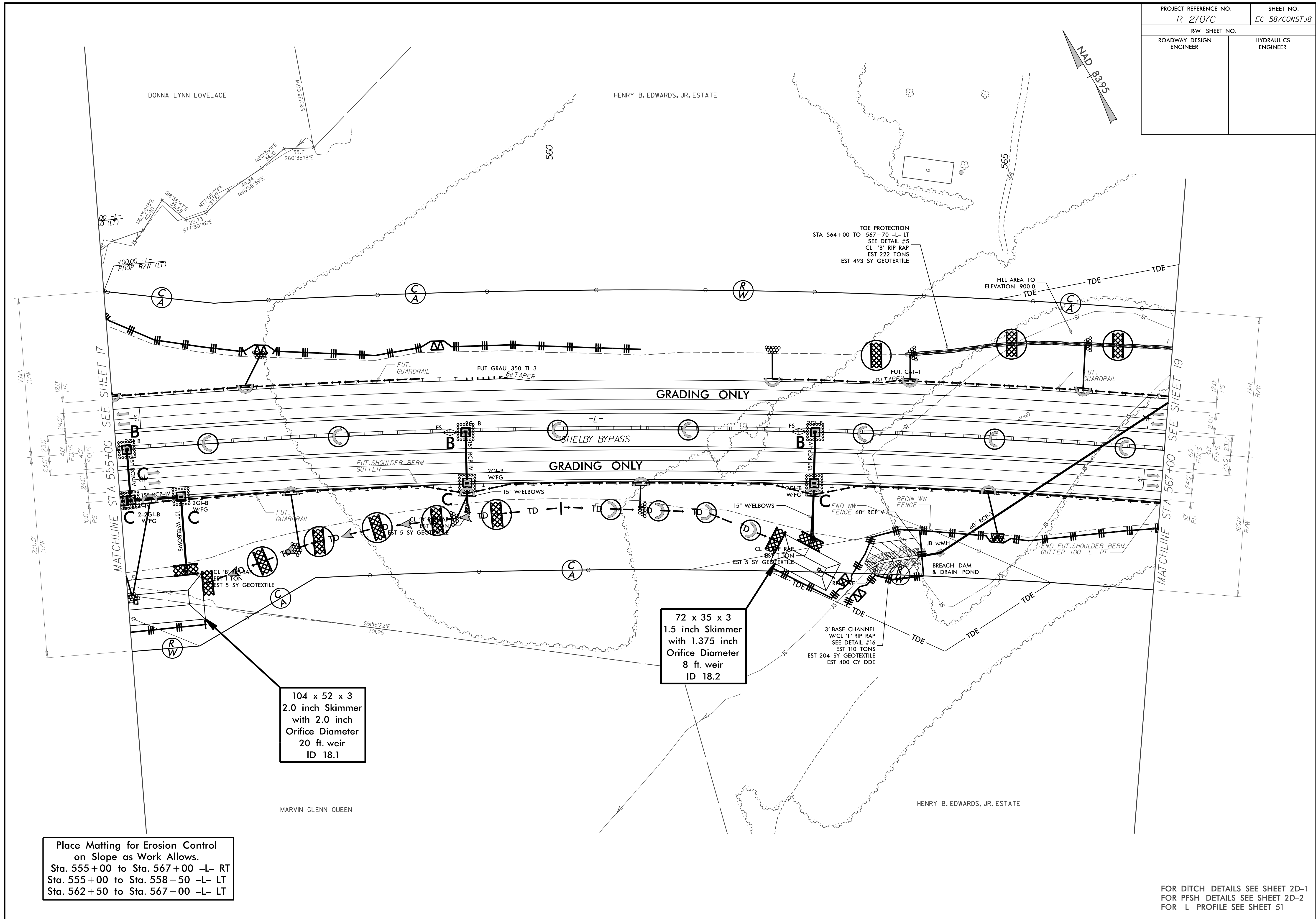


PROJECT REFERENCE NO.	SHEET NO.
R-2707C	EC-58/CONST.18
RW SHEET NO.	
ROADWAY DESIGN ENGINEER	HYDRAULICS ENGINEER



Place Matting for Erosion Control
on Slope as Work Allows.
Sta. 555+00 to Sta. 567+00 -L- RT
Sta. 555+00 to Sta. 558+50 -L- LT
Sta. 562+50 to Sta. 567+00 -L- LT

104 x 52 x 3
2.0 inch Skimmer
with 2.0 inch
Orifice Diameter
20 ft. weir
ID 18.1

72 x 35 x 3
1.5 inch Skimmer
with 1.375 inch
Orifice Diameter
8 ft. weir
ID 18.2

3' BASE CHANNEL
W/CL 11" RIP RAP
SEE DETAIL #16
EST 110 TONS
EST 204 SY GEOTEXTILE
EST 400 CY DDE

TOE PROTECTION
STA 564+00 TO 567+70 -L- LT
SEE DETAIL #5
CL 'B' RIP RAP
EST 222 TONS
EST 493 SY GEOTEXTILE

FILL AREA TO
ELEVATION 900.0
TDE

MATCHLINE STA 567+00 SEE SHEET 19

MATCHLINE STA 555+00 SEE SHEET 17

FOR DITCH DETAILS SEE SHEET 2D-1
FOR PFSH DETAILS SEE SHEET 2D-2
FOR -L- PROFILE SEE SHEET 51