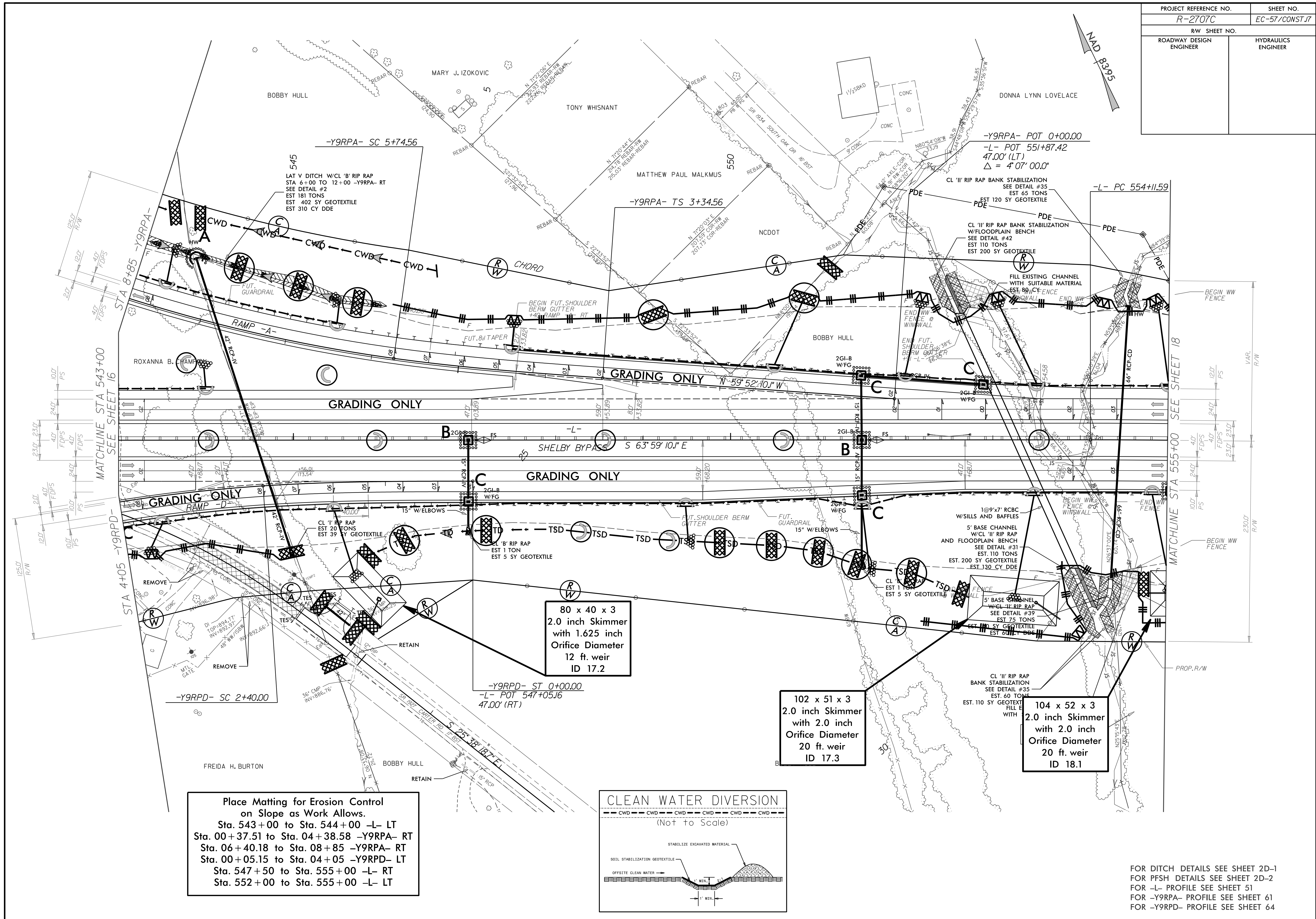


| | |
|-------------------------|---------------------|
| PROJECT REFERENCE NO. | SHEET NO. |
| R-2707C | EC-57/CONST.17 |
| RW SHEET NO. | |
| ROADWAY DESIGN ENGINEER | HYDRAULICS ENGINEER |



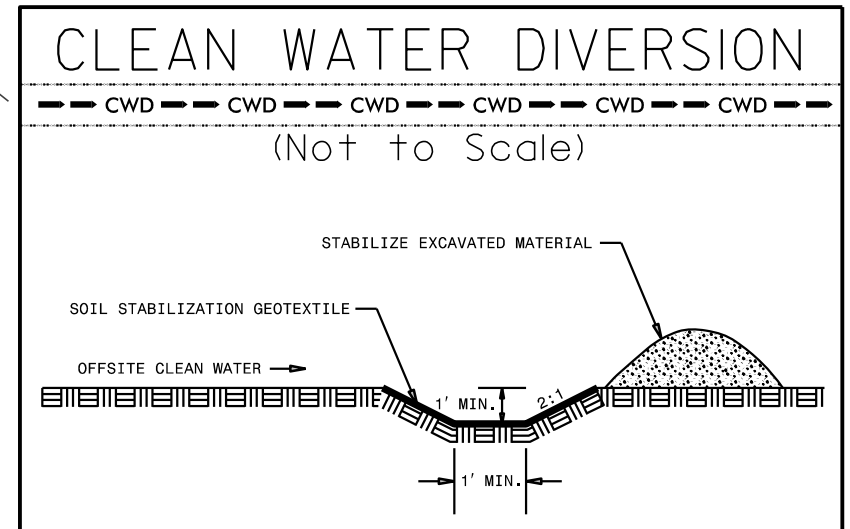
Place Matting for Erosion Control on Slope as Work Allows.

- Sta. 543+00 to Sta. 544+00 -L- LT
- Sta. 00+37.51 to Sta. 04+38.58 -Y9RPA- RT
- Sta. 06+40.18 to Sta. 08+85 -Y9RPA- RT
- Sta. 00+05.15 to Sta. 04+05 -Y9RPD- LT
- Sta. 547+50 to Sta. 555+00 -L- RT
- Sta. 552+00 to Sta. 555+00 -L- LT

80 x 40 x 3
2.0 inch Skimmer
with 1.625 inch
Orifice Diameter
12 ft. weir
ID 17.2

102 x 51 x 3
2.0 inch Skimmer
with 2.0 inch
Orifice Diameter
20 ft. weir
ID 17.3

104 x 52 x 3
2.0 inch Skimmer
with 2.0 inch
Orifice Diameter
20 ft. weir
ID 18.1



FOR DITCH DETAILS SEE SHEET 2D-1
FOR PFSH DETAILS SEE SHEET 2D-2
FOR -L- PROFILE SEE SHEET 51
FOR -Y9RPA- PROFILE SEE SHEET 61
FOR -Y9RPD- PROFILE SEE SHEET 64