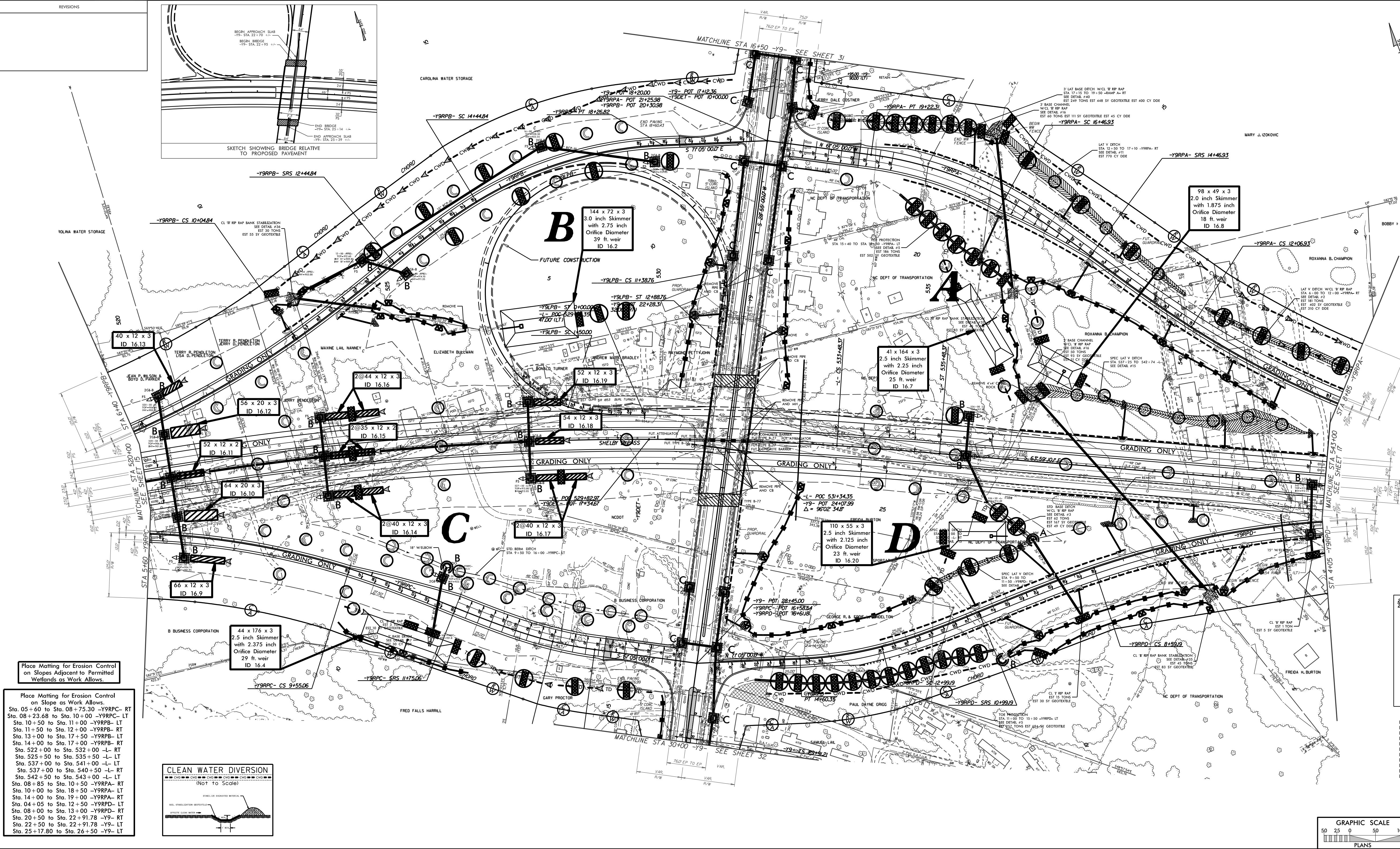
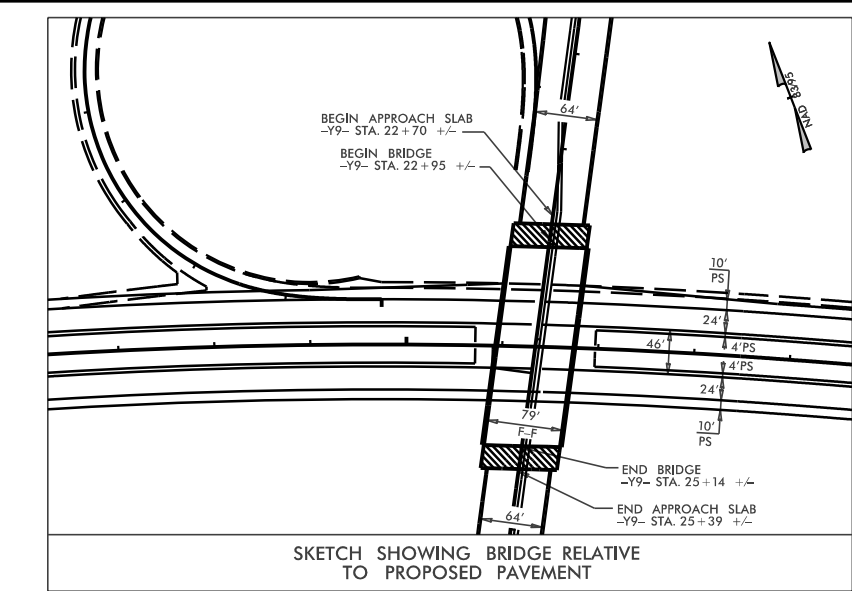


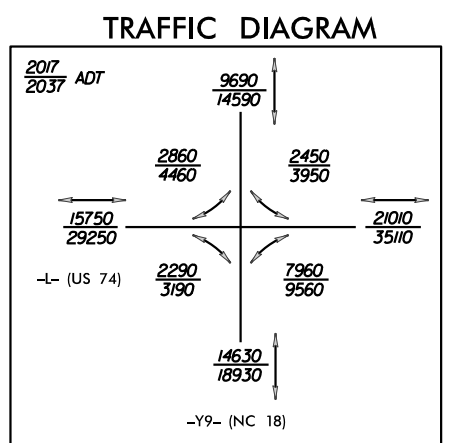
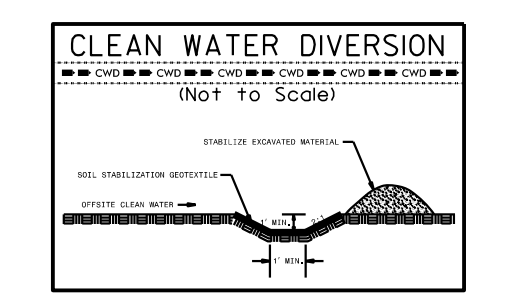
PROJECT REFERENCE NO.	R-2707C	SHEET NO.	EC-56/CONST.6
ROADWAY DESIGN ENGINEER			

REVISIONS	

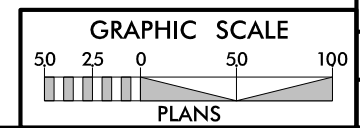


Place Matting for Erosion Control on Slope as Work Allows.

Sta. 05+60 to Sta. 08+75.30 -Y9RPC-RT  
 Sta. 08+23.68 to Sta. 10+00 -Y9RPC-LT  
 Sta. 10+50 to Sta. 11+00 -Y9RPB-LT  
 Sta. 11+50 to Sta. 12+00 -Y9RPA-RT  
 Sta. 13+00 to Sta. 17+50 -Y9RPB-LT  
 Sta. 14+00 to Sta. 17+00 -Y9RPB-RT  
 Sta. 522+00 to Sta. 532+00 -L-RT  
 Sta. 525+50 to Sta. 535+50 -L-LT  
 Sta. 537+00 to Sta. 541+00 -L-LT  
 Sta. 537+00 to Sta. 540+50 -L-RT  
 Sta. 542+50 to Sta. 543+00 -L-LT  
 Sta. 08+85 to Sta. 10+50 -Y9RPA-RT  
 Sta. 10+00 to Sta. 18+50 -Y9RPA-LT  
 Sta. 14+00 to Sta. 19+00 -Y9RPA-RT  
 Sta. 04+05 to Sta. 12+50 -Y9RPD-LT  
 Sta. 08+00 to Sta. 13+00 -Y9RPD-RT  
 Sta. 20+50 to Sta. 22+91.78 -Y9-RT  
 Sta. 22+50 to Sta. 22+91.78 -Y9-LT  
 Sta. 25+17.80 to Sta. 26+50 -Y9-LT



FOR -Y9- DETOUR DETAILS SEE SHEETS 2B-1 & 2B-2  
 FOR INTERSECTION DETAILS SEE SHEETS 2B-3 & 2B-4  
 FOR DITCH DETAILS SEE SHEET 2D-1  
 FOR FISH DETAILS SEE SHEET 2D-2  
 FOR -L- PROFILE SEE SHEET 50  
 FOR -Y9- PROFILE SEE SHEET 60  
 FOR -Y9RPA- PROFILE SEE SHEET 61  
 FOR -Y9RPB- PROFILE SEE SHEET 62  
 FOR -Y9RPC- PROFILE SEE SHEET 63  
 FOR -Y9RPD- PROFILE SEE SHEET 64  
 FOR -Y9LPB- PROFILE SEE SHEET 65



LOCATION: INTERCHANGE AT  
 -L- US 74 BYPASS  
 AND -Y9- NC 18

TP NO. R-2707C COUNTY CLEVELAND

DESIGNED BY: T. HUFFMAN

CHECKED BY: T. REID DATE: 12/13/12