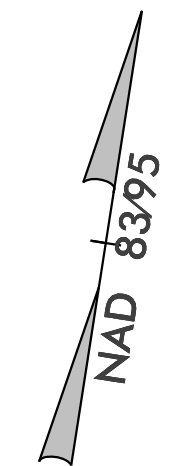
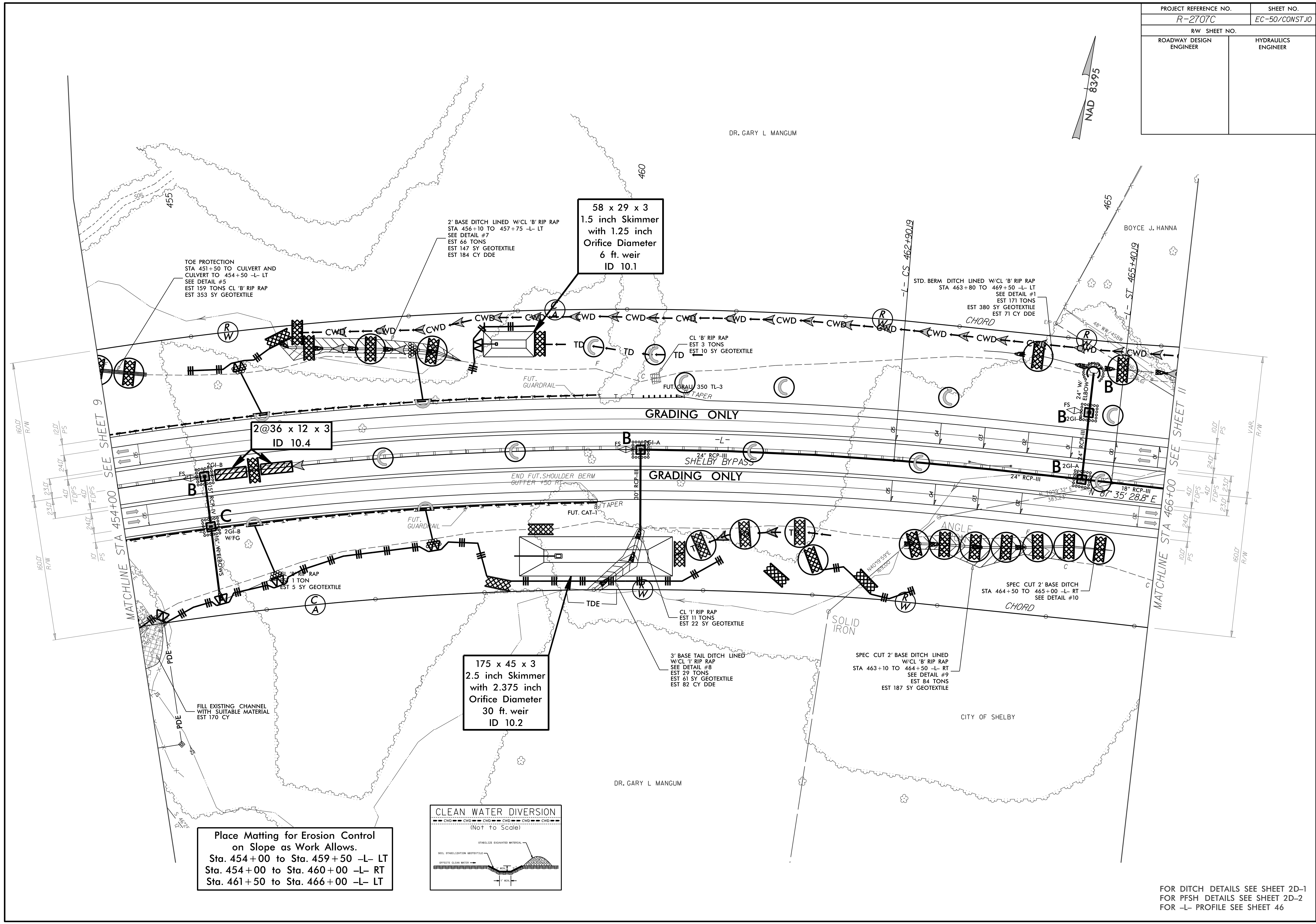


PROJECT REFERENCE NO. R-2707C	SHEET NO. EC-50/CONST.10
RW SHEET NO.	
ROADWAY DESIGN ENGINEER	HYDRAULICS ENGINEER



DR. GARY L. MANGUM



TOE PROTECTION
STA 451+50 TO CULVERT AND
CULVERT TO 454+50 -L- LT
SEE DETAIL #5
EST 159 TONS CL 'B' RIP RAP
EST 353 SY GEOTEXTILE

2' BASE DITCH LINED W/CL 'B' RIP RAP
STA 456+10 TO 457+75 -L- LT
SEE DETAIL #7
EST 66 TONS
EST 147 SY GEOTEXTILE
EST 184 CY DDE

58 x 29 x 3
1.5 inch Skimmer
with 1.25 inch
Orifice Diameter
6 ft. weir
ID 10.1

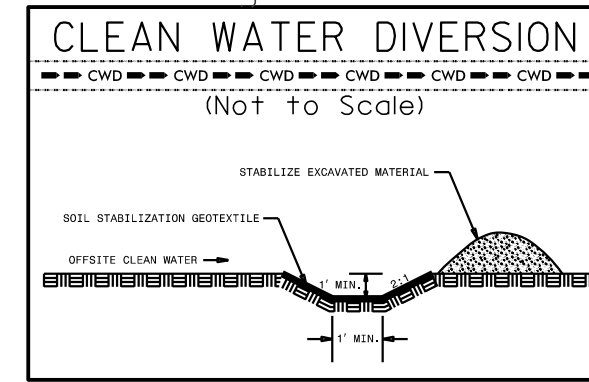
STD. BERM DITCH LINED W/CL 'B' RIP RAP
STA 463+80 TO 469+50 -L- LT
SEE DETAIL #1
EST 171 TONS
EST 380 SY GEOTEXTILE
EST 71 CY DDE

2@36 x 12 x 3
ID 10.4

175 x 45 x 3
2.5 inch Skimmer
with 2.375 inch
Orifice Diameter
30 ft. weir
ID 10.2

SPEC CUT 2' BASE DITCH LINED
W/CL 'B' RIP RAP
STA 463+10 TO 464+50 -L- RT
SEE DETAIL #9
EST 84 TONS
EST 187 SY GEOTEXTILE

Place Matting for Erosion Control
on Slope as Work Allows.
Sta. 454+00 to Sta. 459+50 -L- LT
Sta. 454+00 to Sta. 460+00 -L- RT
Sta. 461+50 to Sta. 466+00 -L- LT



FOR DITCH DETAILS SEE SHEET 2D-1
FOR PFSH DETAILS SEE SHEET 2D-2
FOR -L- PROFILE SEE SHEET 46