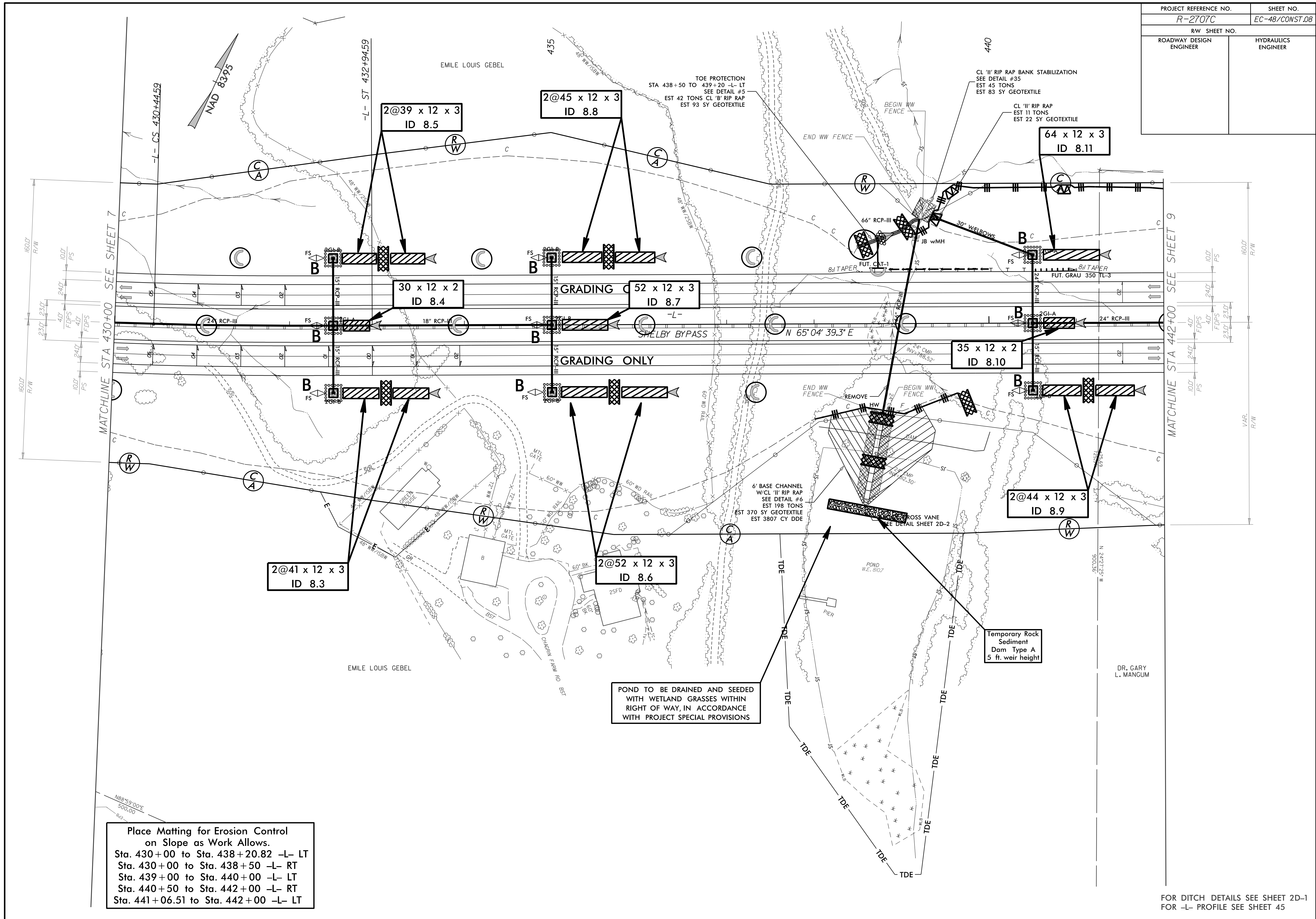


PROJECT REFERENCE NO.	SHEET NO.
R-2707C	EC-48/CONST.08
RW SHEET NO.	
ROADWAY DESIGN ENGINEER	HYDRAULICS ENGINEER



Place Matting for Erosion Control on Slope as Work Allows.
 Sta. 430+00 to Sta. 438+20.82 -L- LT
 Sta. 430+00 to Sta. 438+50 -L- RT
 Sta. 439+00 to Sta. 440+00 -L- LT
 Sta. 440+50 to Sta. 442+00 -L- RT
 Sta. 441+06.51 to Sta. 442+00 -L- LT

POND TO BE DRAINED AND SEEDED WITH WETLAND GRASSES WITHIN RIGHT OF WAY, IN ACCORDANCE WITH PROJECT SPECIAL PROVISIONS

FOR DITCH DETAILS SEE SHEET 2D-1 FOR -L- PROFILE SEE SHEET 45