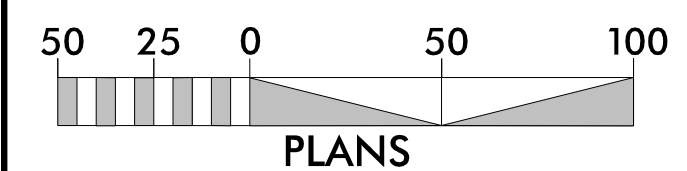
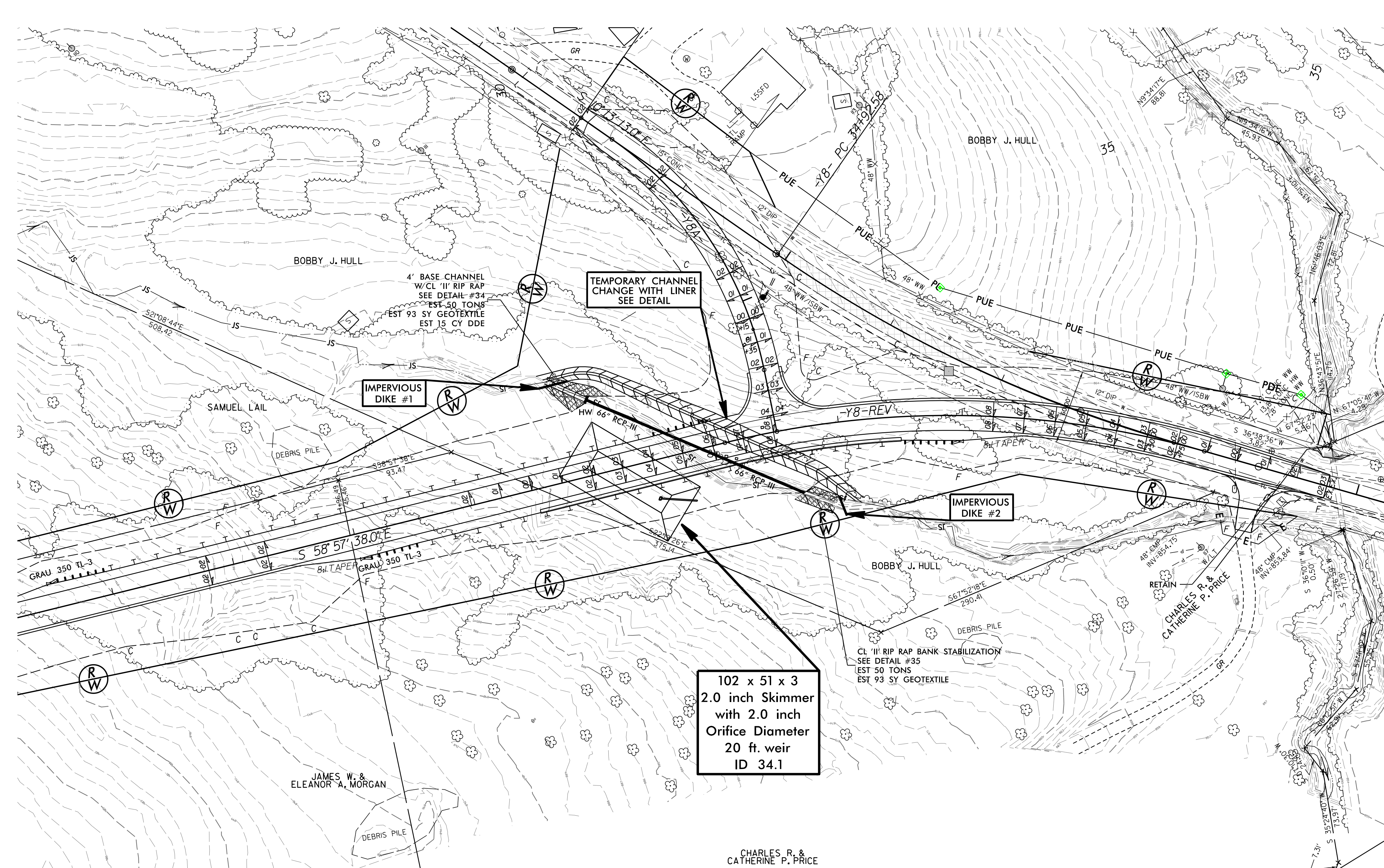


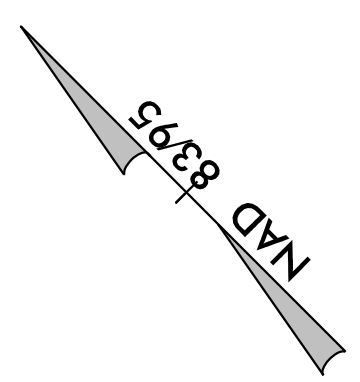
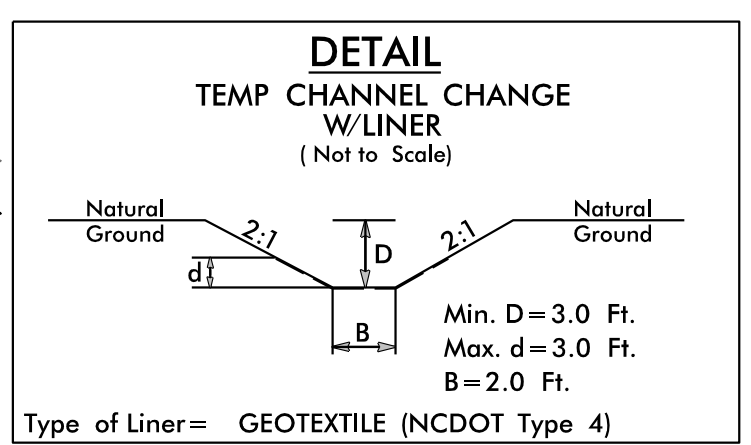
# 66" RCP CONSTRUCTION SEQUENCE STA. 30+87 -Y8REV- UT TO HICKORY CREEK

PROJECT REFERENCE NO. R-2707C	SHEET NO. EC-34A/CONST.34
RW SHEET NO.	
ROADWAY DESIGN ENGINEER	HYDRAULICS ENGINEER

- 1.) CONSTRUCT SKIMMER BASIN 34.1.
- 2.) CONSTRUCT TEMPORARY CHANNEL CHANGE WITH LINER (SEE DETAIL).
- 3.) INSTALL IMPERVIOUS DIKES #1 AND #2 AND DIVERT FLOW INTO TEMPORARY CHANNEL.
- 4.) DEWATER CONSTRUCTION AREA, UTILIZING SKIMMER BASIN 34.1 FOR PUMPED EFFLUENT.
- 5.) INSTALL 66" RCP W/HEADWALL, UPSTREAM CHANNEL AND DOWNSTREAM BANK STABILIZATION IN ACCORDANCE WITH THE PLANS.
- 6.) REMOVE IMPERVIOUS DIKES #1, #2 AND TEMPORARY CHANNEL AND DIRECT FLOW THROUGH 66" RCP.
- 7.) COMPLETE ROADWAY.



102 x 51 x 3  
2.0 inch Skimmer  
with 2.0 inch  
Orifice Diameter  
20 ft. weir  
ID 34.1



CHARLES R. & CATHERINE P. PRICE